

RIKEN Clone ID : IRAL029E19

Lot#: 7566_A7Dd

Vector : pOTB7

Gene	RPL28	
Accession No.	BC011582.1	4222 bp
	<i>CDS</i>	414 bp

● Plasmid DNA purification

Date : 170412

Culture : LB (25 ug/ml Chloramphenicol) 5 ml -> at 37 deg C over night

Date : 170418

Purification : QIAGEN Miniprep kit -> dH₂O 100 ul

● Digestion by restriction enzyme/Concentration calibration

Date : 170418

DNA concentration (O.D.): 161 ng/ul

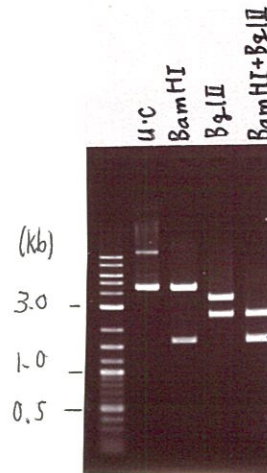
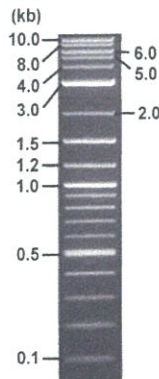
< Size of fragment expected from this clone >

DNA	0.6	ul
Enzyme (BamHI + BglII)	0.5 + 0.5	ul
Buffer H	1	ul
dH ₂ O	7.4	ul
Total	10	ul

BamHI	4.1, 1.6	kb	
BglII	3.4, 2.3	kb	
BamHI + BglII	1.6kb (Vector)	2.3, 1.6, 0.24	kb

Electrophoresis : 1% agarose gel, 1x TAE Buffer

Marker : 2-Log DNA Ladder (NEB#N3200L)



● Adjust plasmid DNA solution to 25 ng/ul

Date : 170420

DNA (161 ng/ul)	82.0	ul
10x TE	52.8	ul
dH ₂ O	393.2	ul
Total	528.0	ul

● Confirmation of the insertion sequence

Date : 170419

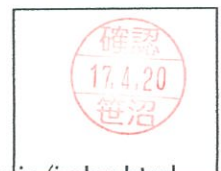
Primer A	pOTB7_F
Primer B	pOTB7_R
Primer C	poly(A) region primer #0
List of Sequencing Primers	http://dna.brc.riken.jp/en/GNPclone3en.html

● Shipping

Conc. : 25 ng/ul, Volume : 40 ul

Conc. : ng/ul, Volume : ul

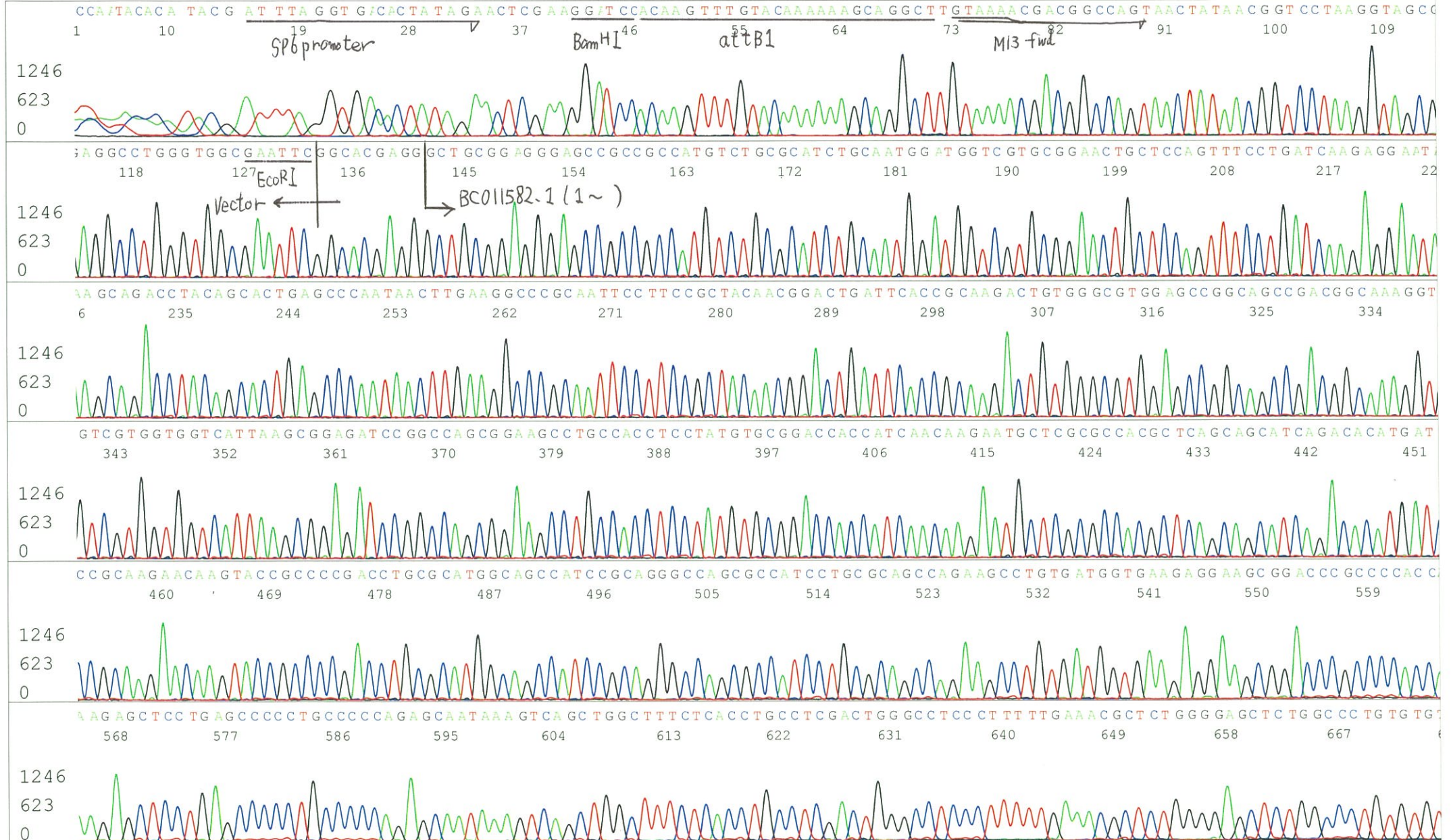
APPROVED BY : <http://dna.brc.riken.jp/index.html>



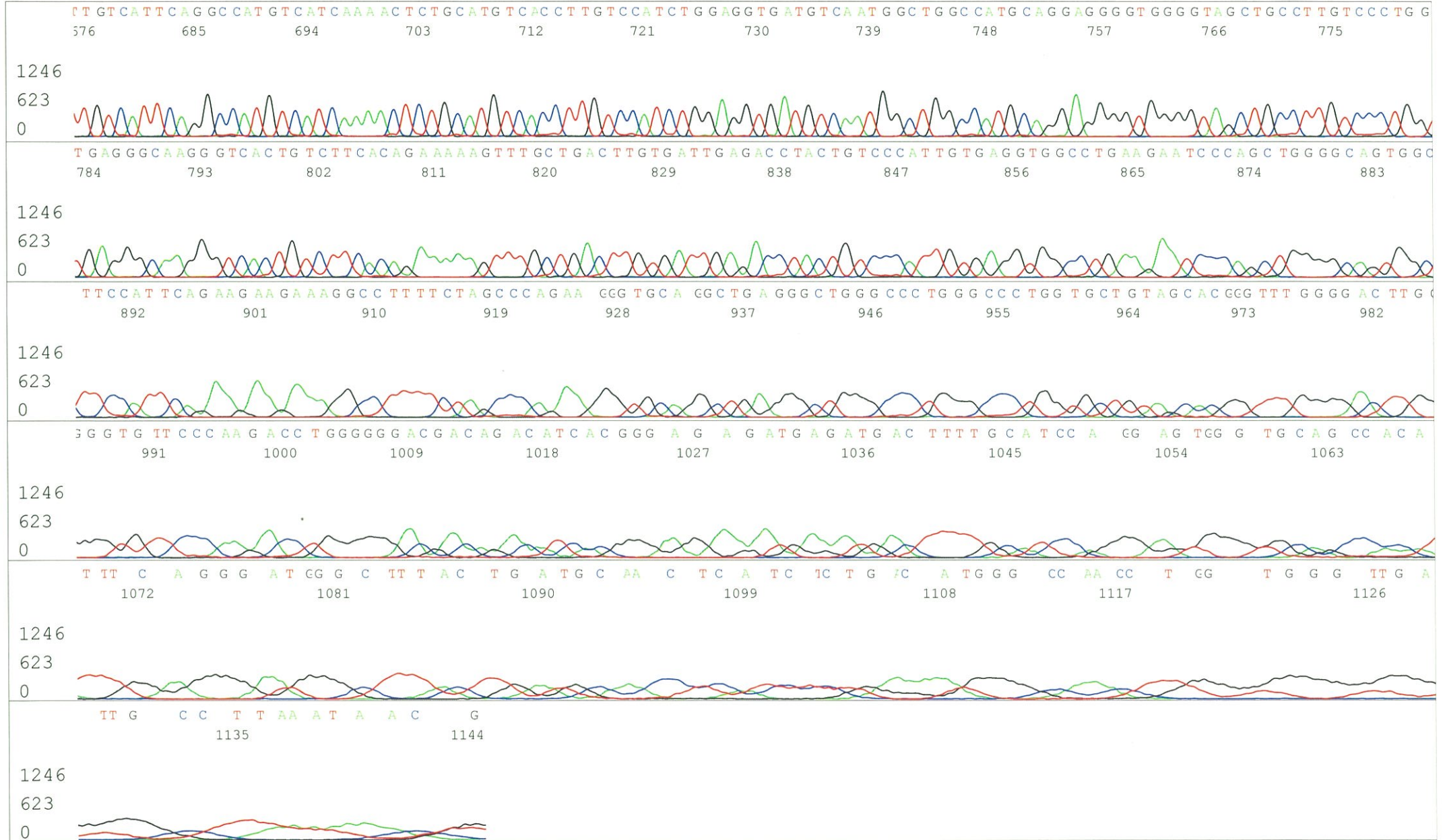
S/N G:182 A:196 T:193 C:253
KB.bcp
KB 1.4.1.8 Cap:3

Primer A: pOTB7-F

5' AACGCGGCTACAATTAATACATAACC 3'

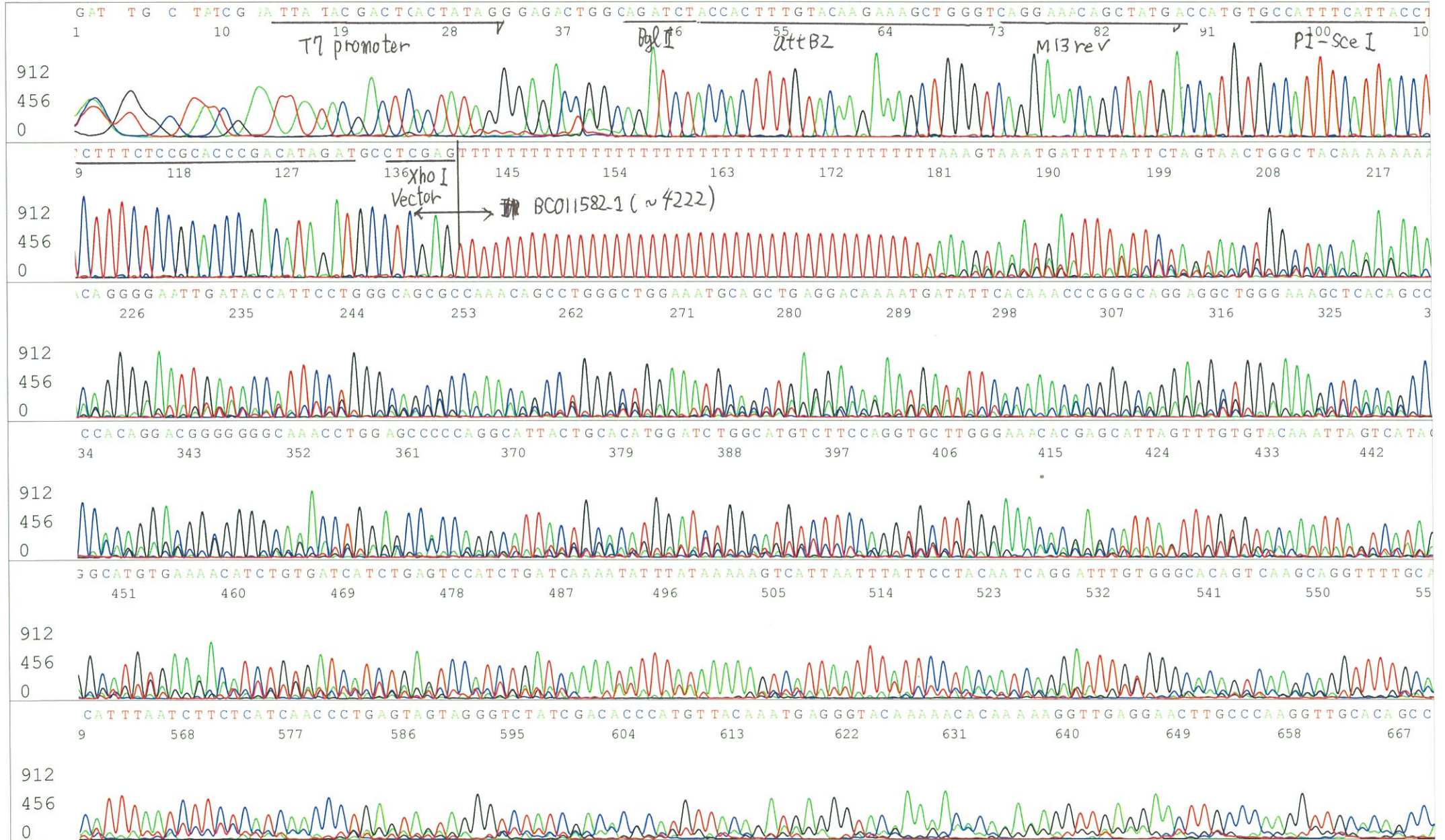


S/N G:182 A:196 T:193 C:253
KB.bcp
KB 1.4.1.8 Cap:3



S/N G:274 A:388 T:376 C:416
KB.bcp
KB 1.4.1.8 Cap:6

Primer B: pOTB7-R
5' GTACTGCAGCCGATTTCATTAATGC 3'



S/N G:274 A:388 T:376 C:416
KB.bcp
KB 1.4.1.8 Cap:6

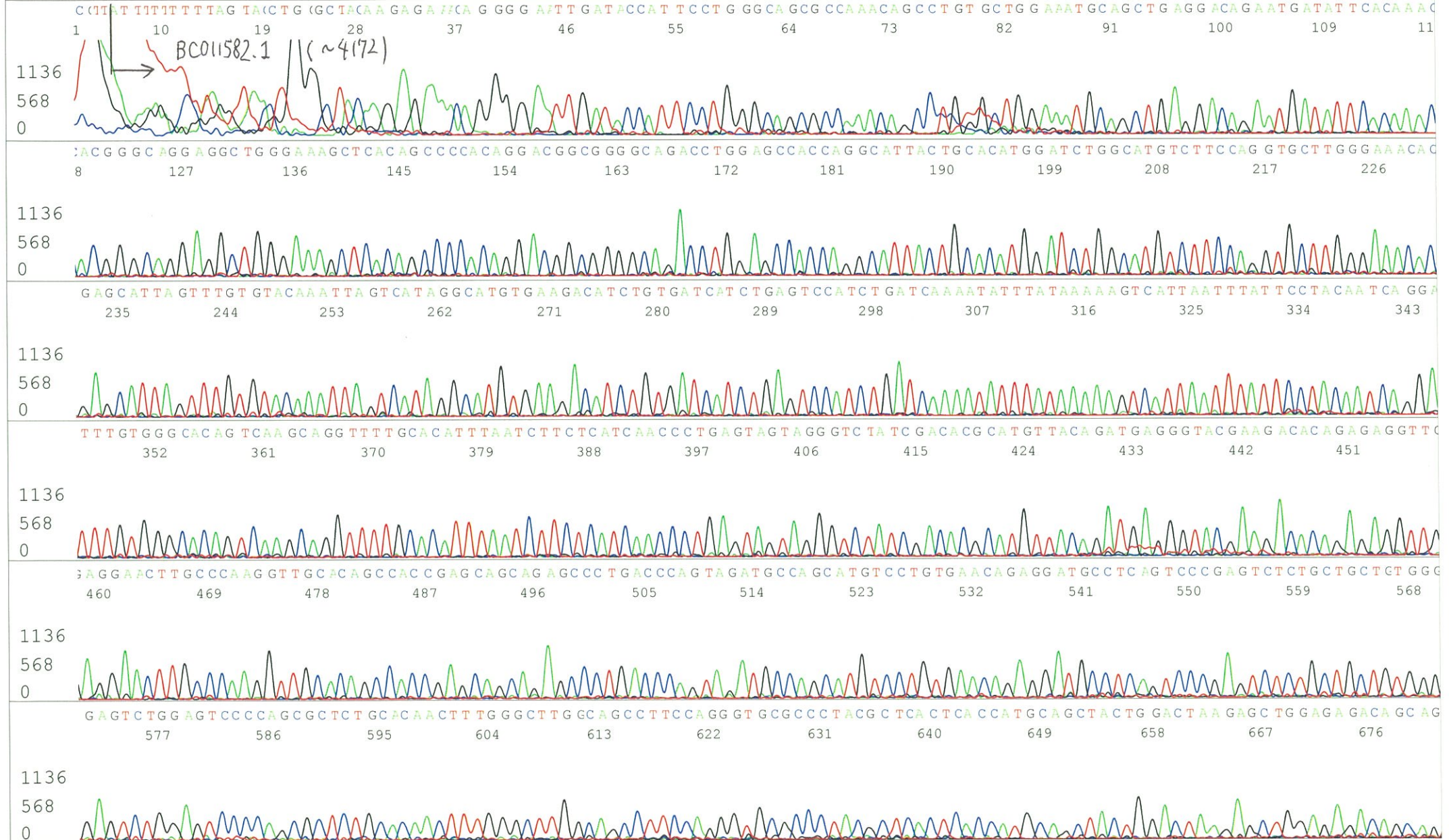


S/N G:9 A:9 T:9 C:11
KB.bcp
KB 1.4.1.8 Cap:9

Primer C : Poly(A) region primer #0
5' TTTTTTTTTTTTTTTTTTTTTTNNN 3'

IRAL029E19_A7Dd_GNPmixture
KB_3500_POP7_BDTv3.mob
Pts 1473 to 13807 Pk1 Loc:1450
Version 6.0 HiSQV Bases: 947

Apr 19,2017 10:19AM, JST
Apr 19,2017 10:46AM, JST
Spacing:12.28 Pts/Panel1350
Plate Name: 20170419_GNP



S/N G:9 A:9 T:9 C:11
KB.bcp
KB 1.4.1.8 Cap:9

