

RIKEN Clone ID : IRAL028A16

Lot#: 7566_A6E6

Vector : pOTB7

Gene	WDR34	
Accession No.	BC011874.2	1773 bp
	<i>GDS</i>	1611 bp

● Plasmid DNA purification

Date : 160509

Culture : LB (25 ug/ml Chloramphenicol) 5 ml -> at 37 deg C over night

Date : 160510

Purification : QIAGEN Miniprep kit -> dH₂O 100 ul

● Digestion by restriction enzyme/Concentration calibration

Date : 160510

DNA concentration (O.D.): 116 ng/ul

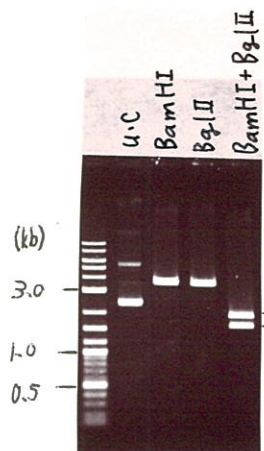
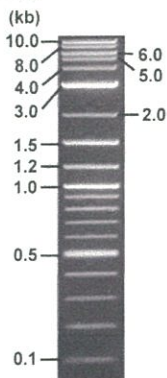
< Size of fragment expected from this clone >

DNA	0.8	ul
Enzyme (BamHI + BglII)	0.5 + 0.5	ul
Buffer H	1	ul
dH ₂ O	7.2	ul
Total	10	ul

BamHI	3.6	kb
BglII	3.6	kb
BamHI + BglII	1.6kb (Vector)	2.0kb

Electrophoresis : 1% agarose gel, 1x TAE Buffer

Marker : 2-Log DNA Ladder (NEB#N3200L)



● Adjust plasmid DNA solution to 25 ng/ul

Date : 160516

● Confirmation of the insertion sequence

Date : 160512

DNA (116 ng/ul)	83.0	ul
10x TE	38.5	ul
dH ₂ O	263.6	ul
Total	385.1	ul

Primer A	pOTB7_F
Primer B	pOTB7_R
Primer C	-
List of Sequencing Primers	http://dna.brc.riken.jp/en/GNPclone3en.html

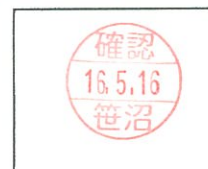
● Shipping

Conc. : 25 ng/ul, Volume : 40 ul

Conc. : ___ ng/ul, Volume : ___ ul

APPROVED BY :

<http://dna.brc.riken.jp/index.html>



S/N G:293 A:153 T:133 C:199

Primer A: pOTB7-F

IRAL028A16_A6E6_pOTB7_F

May 12,2016 11:52AM, JST

KB.bcp

5' AACGCGGCTACAATTAATACATAACC 3'

KB_3500_POP7_BDTv3.mob

May 12,2016 12:18PM, JST

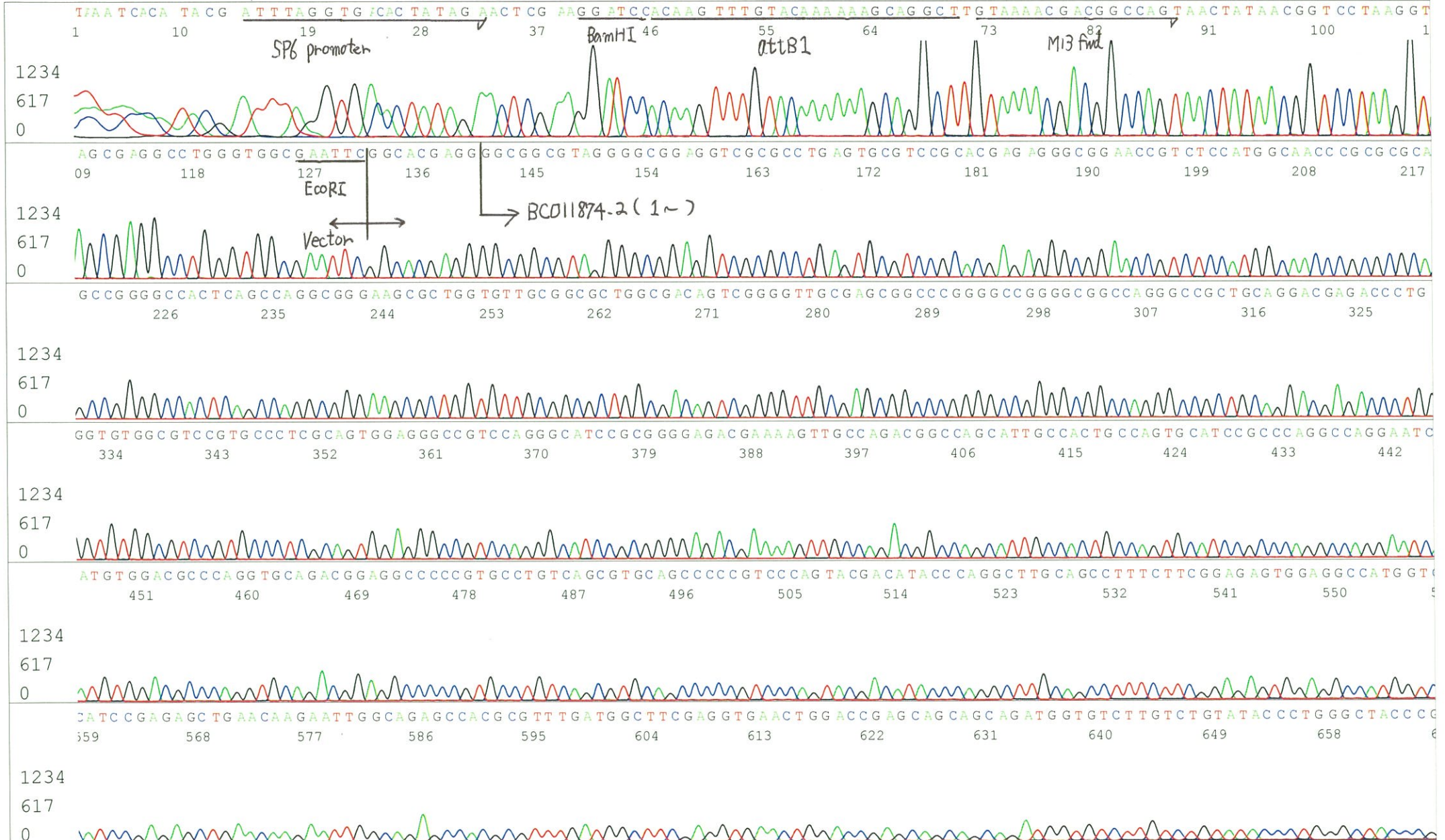
KB 1.4.1.8 Cap:20

Pts 1550 to 12317 Pk1 Loc:1527

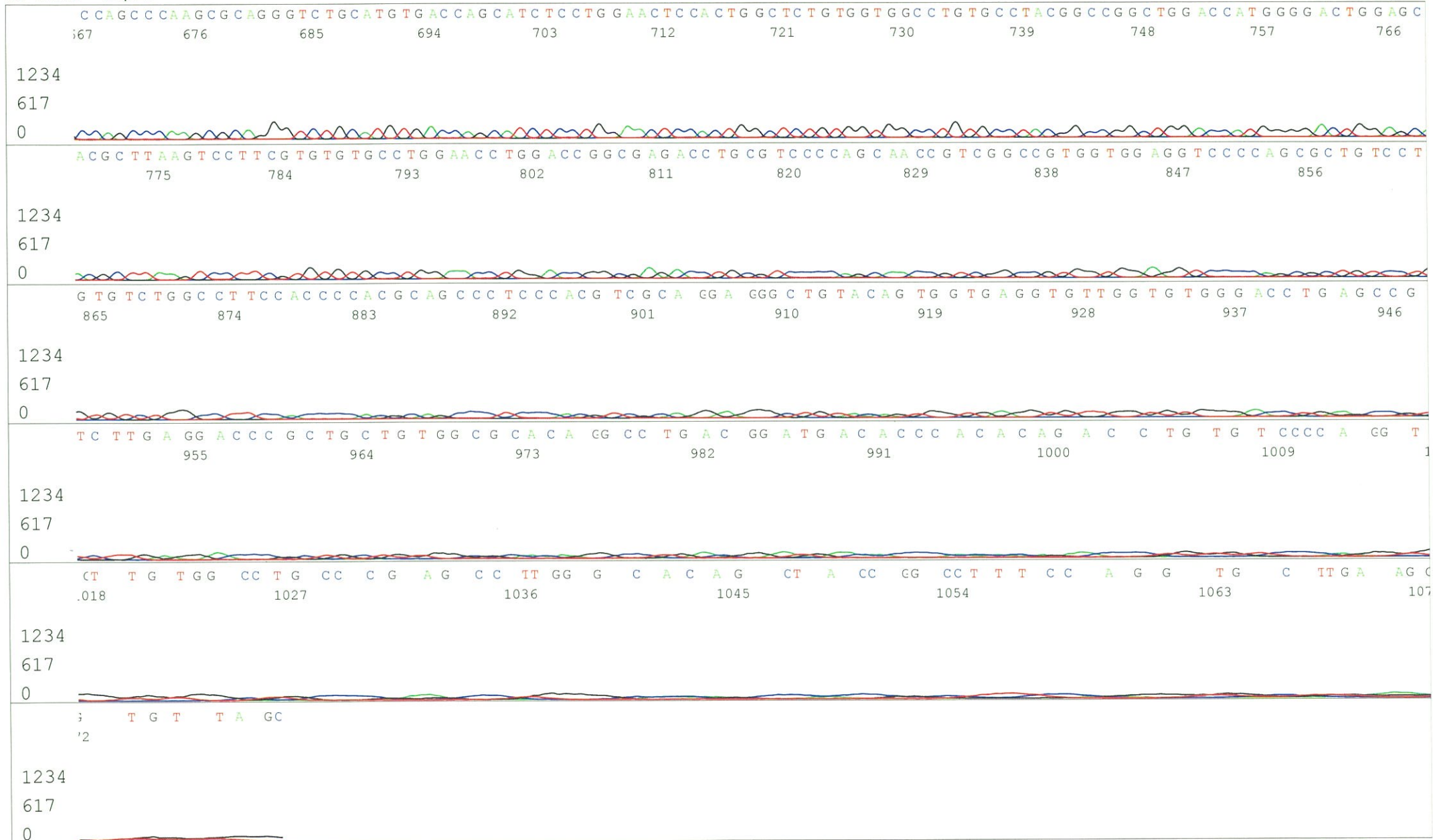
Spacing:10.84 Pts/Panel1350

Version 6.0 HiSQV Bases: 949

Plate Name: 20160512_mix1

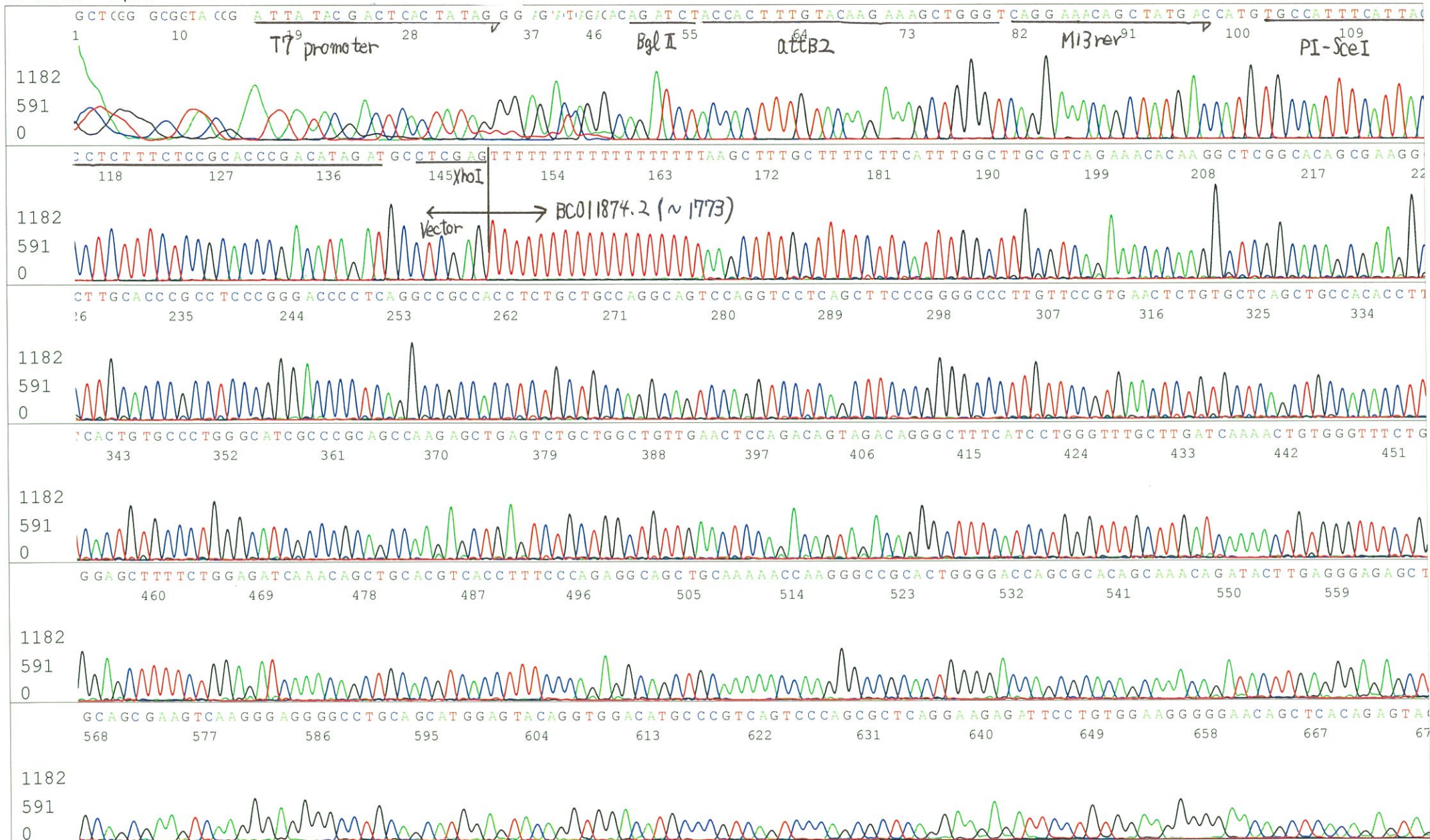


S/N G:293 A:153 T:133 C:199
KB.bcp
KB 1.4.1.8 Cap:20



S/N G:144 A:97 T:115 C:117
KB.bcp
KB 1.4.1.8 Cap:23

Primer B: pOTB7-R
5' GTACTGCAGCCGATTCATTAATGC 3'



S/N G:144 A:97 T:115 C:117
KB.bcp
KB 1.4.1.8 Cap:23

