

RIKEN Clone ID : IRAL027N08

Lot#: 7566_A8B9

Vector : pOTB7

| | | |
|---------------|------------|---------|
| Gene | NDRG4 | |
| Accession No. | BC011795.2 | 3187 bp |
| | CDS | 1020 bp |

● Plasmid DNA purification

Date : 180215

Culture : LB (25 ug/ml Chloramphenicol) 5 ml -> at 37 deg C over night

Date : 180216

Purification : QIAGEN Miniprep kit -> dH₂O 100 ul

● Digestion by restriction enzyme/Concentration calibration

Date : 180216

DNA concentration (O.D.): 33 ng/ul

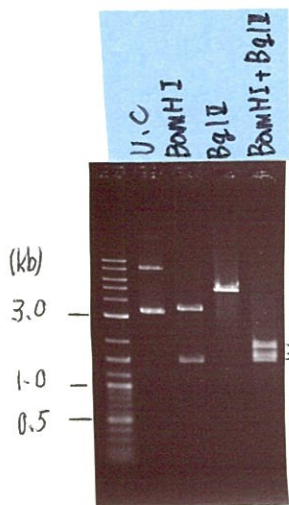
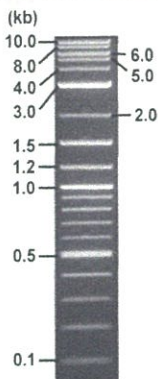
< Size of fragment expected from this clone >

| | |
|-------------------------|--------------|
| DNA | ul |
| Enzyme (BamHI + BglII) | 0.5 + 0.5 ul |
| Buffer H | 1 ul |
| dH ₂ O | ul |
| Total | 10 ul |

| | |
|---------------|---------------------------------|
| BamHI | 3.5 , 1.5 kb |
| BglII | 5.0 kb |
| BamHI + BglII | 1.6kb (Vector) 1.9, 1.5 kb |

Erectrophoresis : 1% agarose gel, 1x TAE Buffer

Marker : 2-Log DNA Ladder (NEB#N3200L)



● Adjust plasmid DNA solution to 25 ng/ul

Date : 180223

● Confirmation of the insertion sequence

Date : 180223

| | |
|------------------------|------------------------|
| DNA (<u>33</u> ng/ul) | <u>78.0</u> ul |
| 10x TE | <u>10.2</u> ul |
| dH ₂ O | <u>14.7</u> ul |
| Total | <u>102.9</u> ul |

| | |
|----------------------------|---|
| Primer A | pOTB7_F |
| Primer B | pOTB7_R |
| Primer C | poly(A) region primer #0 |
| List of Sequencing Primers | http://dna.brc.riken.jp/en/GNPclone3en.html |

● Shipping

Conc. : 25 ng/ul, Volume : 40 ul
 Conc. : ng/ul, Volume : ul



APPROVED BY : <http://dna.brc.riken.jp/index.html>

S/N G:43 A:46 T:38 C:65

Primer A: pOTB7-F

IRAL027N08_1_A8B9_pOTB7_F

Feb 23, 2018 09:59AM, JST

KB.bcp

KB_3500_POP7_BDTv3.mob

Gray line indicates quality value

Feb 23, 2018 10:13AM, JST

KB 1.4.1.8 Cap:3

5' AACGCGCTACAATTAATACATAACC 3'

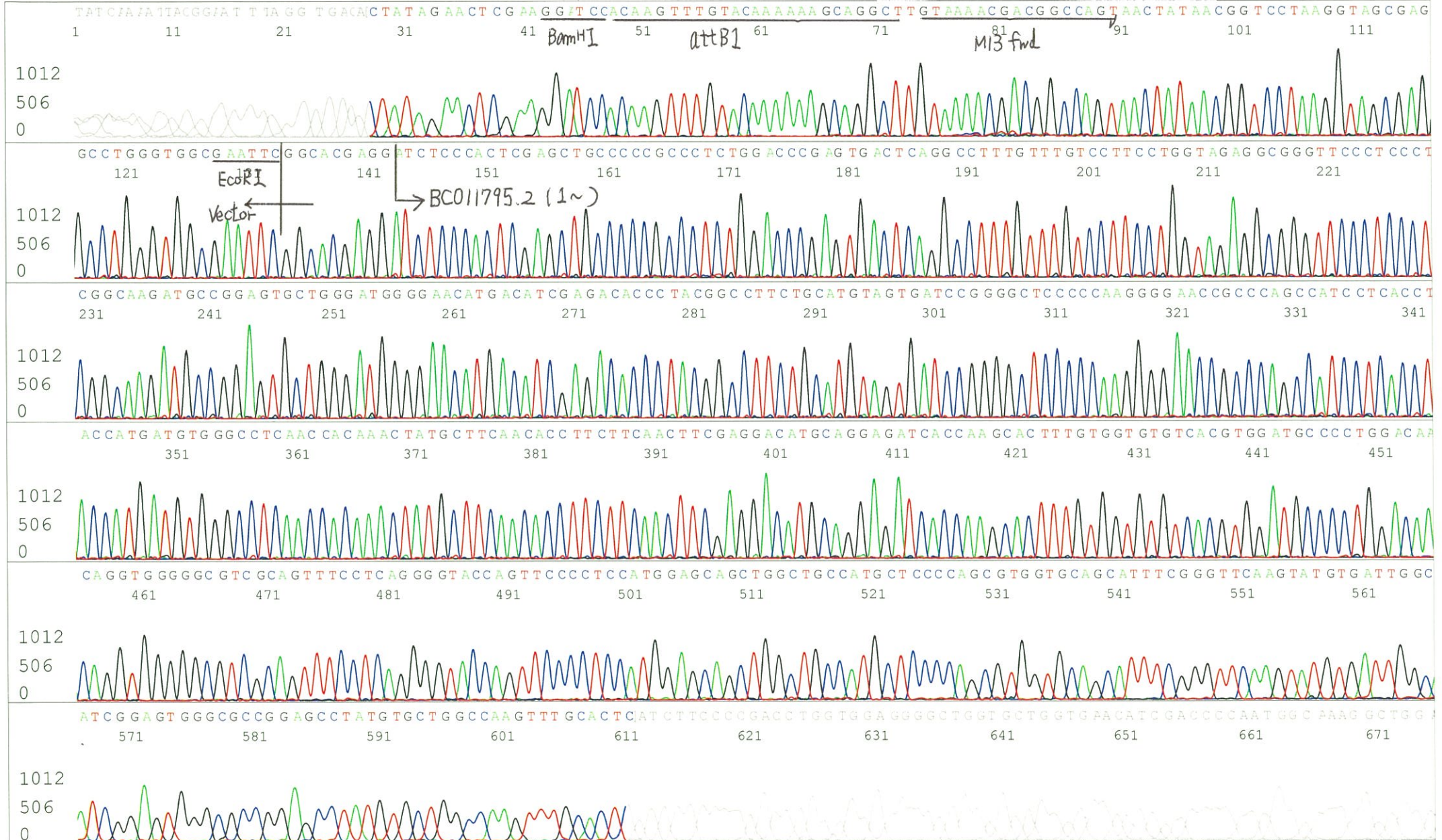
Pts 1742 to 8662 Pk1 Loc:1710

(QV) < 40.

Spacing:10.58 Pts/Panel1350

Version 6.0 HiSQV Bases: 706

Plate Name: 20180223_GNP



S/N G:42 A:69 T:51 C:80

Primer B: pOTB7-R

IRAL027N08_1_A8B9_pOTB7_R

KB_3500_POP7_BDTv3.mob

Gray line indicates quality value

Feb 23, 2018 09:59AM, JST

KB.bcp

Pts 1747 to 8684 Pk1 Loc:1715

Feb 23, 2018 10:13AM, JST

KB 1.4.1.8 Cap:4

5' GTACTGCAGCCGATTCATTAATGC 3'

Version 6.0 HiSQV Bases: 704

(QV) < 40.

Spacing:10.61 Pts/Panel1350

Plate Name: 20180223_GNP

