

RIKEN Clone ID : IRAL027J10

Lot#: 7566_A5Da

Vector : pOTB7

| | | |
|---------------|------------|---------|
| Gene | RAB3A | |
| Accession No. | BC011782.2 | 1491 bp |
| | <i>CDS</i> | 663 bp |

● Plasmid DNA purification

Date : 150413

Culture : LB (25 ug/ml Chloramphenicol) 5 ml → at 37 deg C over night

Date : 150414

Purification : QIAGEN Miniprep kit → dH₂O 100 ul

● Digestion by restriction enzyme/Concentration calibration

Date : 150414

DNA concentration (O.D.): 160 ng/ul

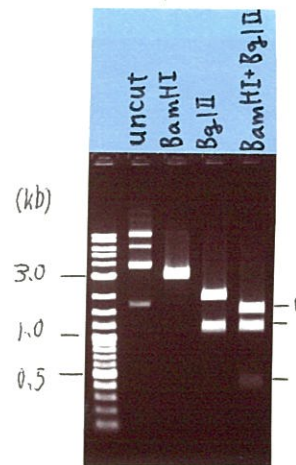
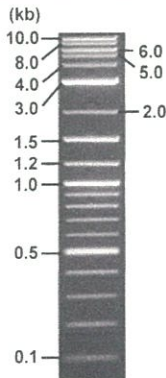
< Size of fragment expected from this clone >

| | | |
|-------------------------|-----------|----|
| DNA | 0.3 | ul |
| Enzyme (BamHI + BglII) | 0.5 + 0.5 | ul |
| Buffer H | 1 | ul |
| dH ₂ O | 7.7 | ul |
| Total | 10 | ul |

| | | | |
|---------------|----------------|------------|----|
| BamHI | 3.3 | kb | |
| BglII | 2.1, 1.2 | kb | |
| BamHI + BglII | 1.6kb (Vector) | 1.2 , 0.45 | kb |

Electrophoresis : 1% agarose gel, 1x TAE Buffer

Marker : 2-Log DNA Ladder (NEB#N3200L)



● Adjust plasmid DNA solution to 25 ng/ul

Date : 150420

| | | |
|-------------------------|-------|----|
| DNA (<u>160</u> ng/ul) | 82.0 | ul |
| 10x TE | 52.5 | ul |
| dH ₂ O | 390.3 | ul |
| Total | 524.8 | ul |

● Confirmation of the insertion sequence

Date : 150416

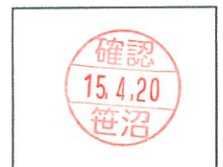
| | |
|----------------------------|---|
| Primer A | pOTB7_F |
| Primer B | pOTB7_R |
| Primer C | - |
| List of Sequencing Primers | http://dna.brc.riken.jp/en/GNPclone3en.html |

● Shipping

Conc. : 25 ng/ul, Volume : 40 ul
 Conc. : ng/ul, Volume : ul

APPROVED BY :

<http://dna.brc.riken.jp/index.html>



S/N G:173 A:109 T:82 C:130

Primer A: pOTB7-F

IRAL027J10_A5Da_pOTB7_F

Apr 15,2015 01:59PM, JST

KB.bcp

KB_3500_POP7_BDTv3.mob

Apr 15,2015 02:25PM, JST

KB 1.4.1.8 Cap:7

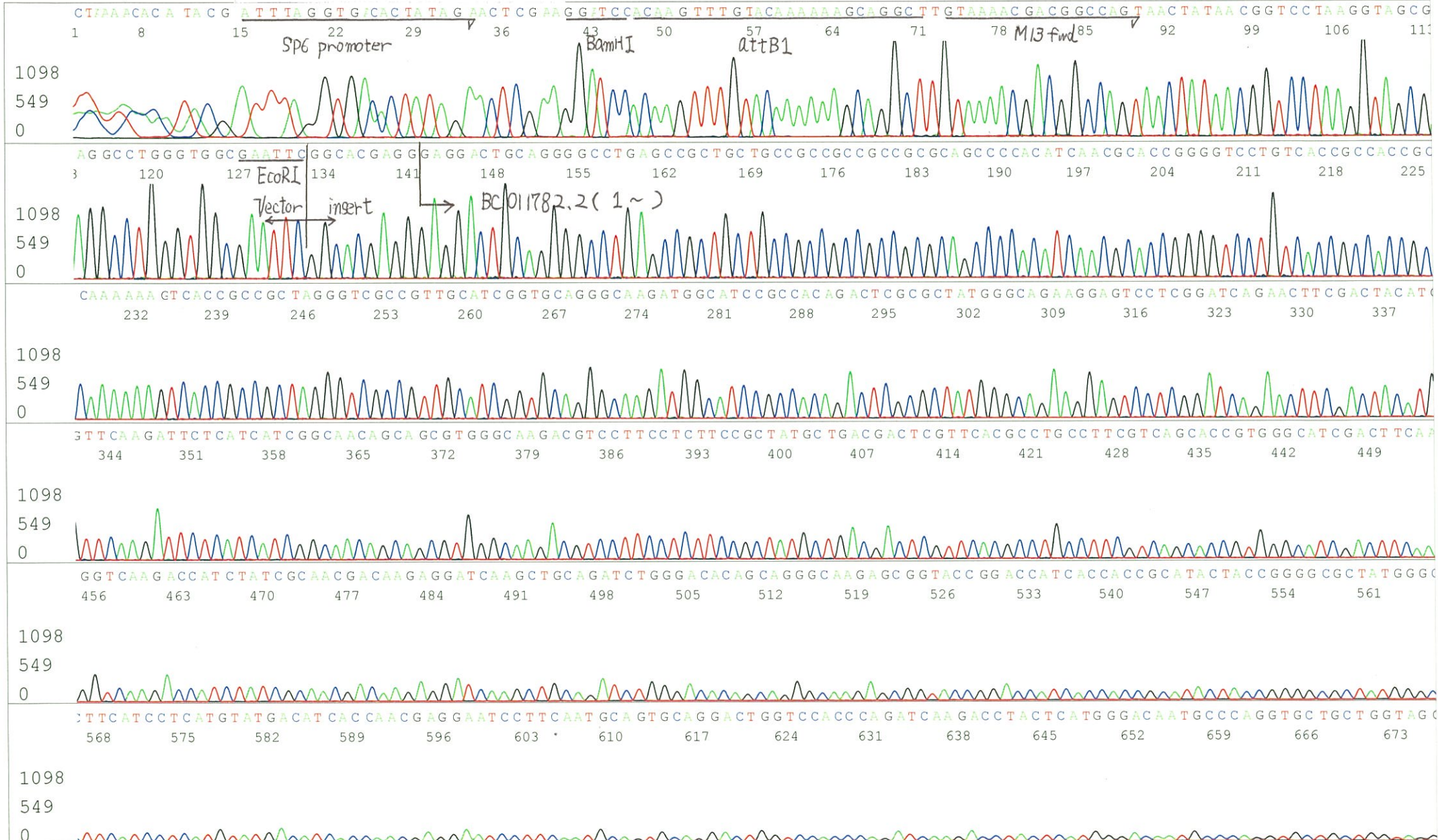
5' AACGCGGCTACAATTAATACATAACC 3'

Pts 1305 to 12777 Pk1 Loc:1282

Spacing:11.33 Pts/Panel1350

Version 6.0 HiSQV Bases: 896

Plate Name: 20150415_GNP



S/N G:173 A:109 T:82 C:130

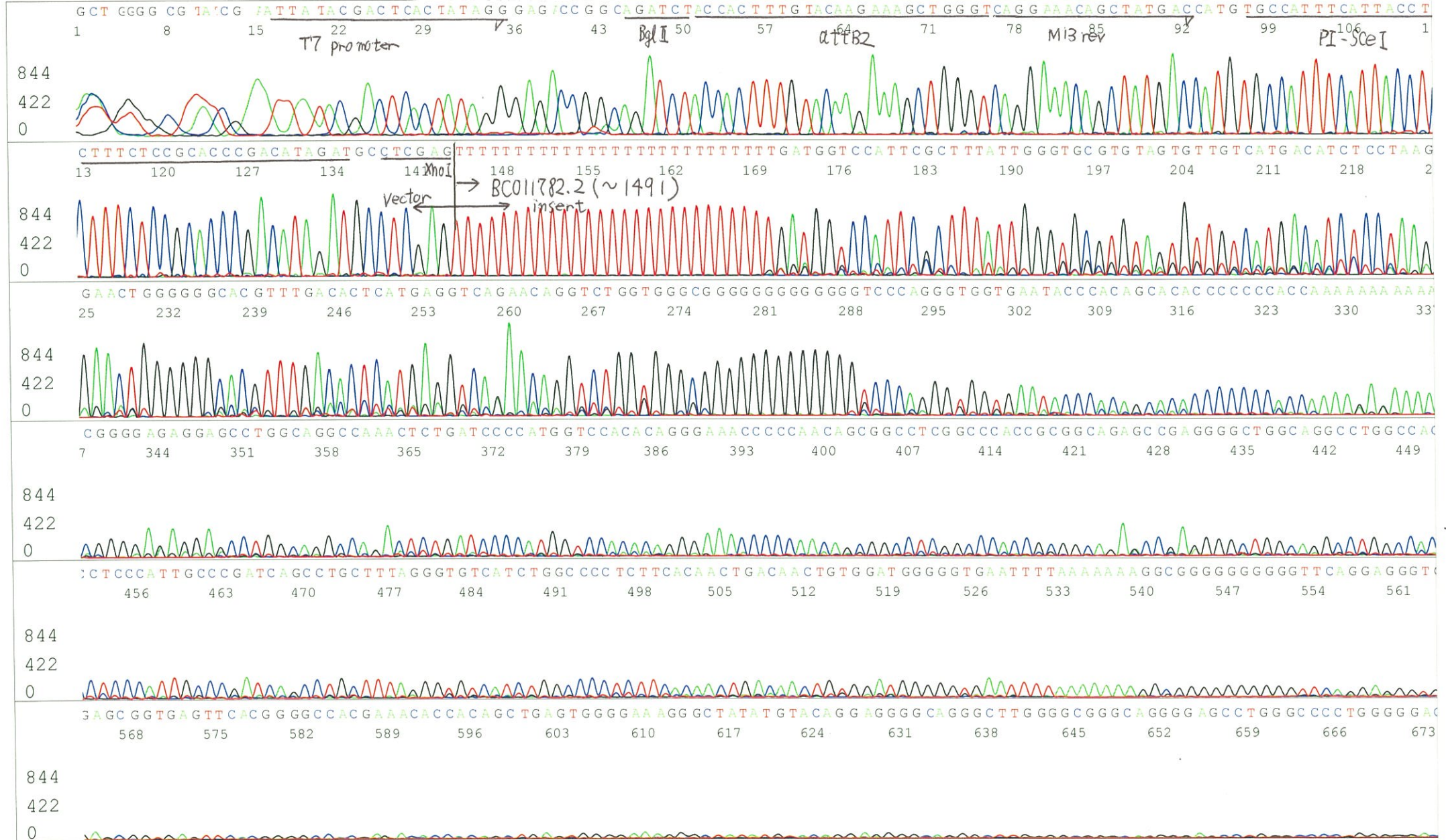
KB.bcp

KB 1.4.1.8 Cap:7



S/N G:55 A:46 T:44 C:47
 KB.bcp
 KB 1.4.1.8 Cap:2

Primer B: pOTB7-R
 5' GTACTGCAGCCGATTCATTAATGC 3'



S/N G:55 A:46 T:44 C:47

IRAL027J10_A5Da_pOTB7_R_B

Apr 16,2015 02:47PM, JST

KB.bcp

KB_3500_POP7_BDTv3.mob

Apr 16,2015 03:14PM, JST

KB 1.4.1.8 Cap:2

Pts 1303 to 12841 Pk1 Loc:1280

Spacing:11.45 Pts/Panel1350

Version 6.0 HiSQV Bases: 757

Plate Name: 20150416_GNP

