

RIKEN Clone ID : IRAL026B15

Lot#: 7566_B1Js

Vector : pOTB7

Gene	SMARCD1	
Accession No.	BC009368.2	3326 bp
	<i>CDS</i>	1431 bp

● Plasmid DNA purification

Date : 21.11.01

Culture : LB (25 ug/ml Chloramphenicol) 5 ml -> at 37 deg C over night

Date : 21.11.02

Purification : QIAGEN Miniprep kit -> dH₂O 100 ul

● Digestion by restriction enzyme/Concentration calibration

Date : 21.11.02

DNA concentration (O.D.): 159 ng/ul

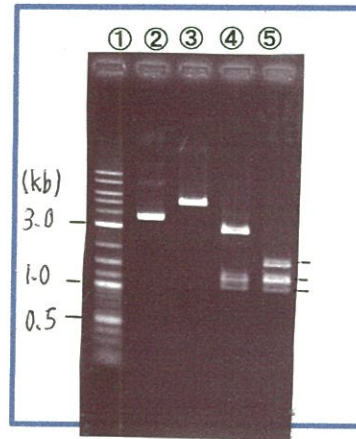
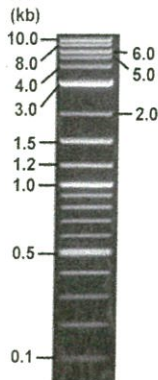
< Size of fragment expected from this clone >

DNA	<u>0.4</u> ul
Enzyme (BamHI + BglII)	0.5 + 0.5 ul
Buffer H	1 ul
dH ₂ O	<u>7.6</u> ul
Total	10 ul

BamHI	5.0 kb
BglII	2.8, 1.2, 1.0 kb
BamHI + BglII	1.6kb (Vector) 1.2, 1.2, 1.0 kb

Electrophoresis : 1% agarose gel, 1x TAE Buffer

Marker : 2-Log DNA Ladder (NEB#N3200L)



- ①:Marker
- ②:uncut
- ③:BamHI
- ④:BglII
- ⑤:BamHI + BglII

● Adjust plasmid DNA solution to 25 ng/ul

Date : 21.11.05

DNA (<u>159</u> ng/ul)	<u>90.0</u> ul
10x TE	<u>57.2</u> ul
dH ₂ O	<u>425.2</u> ul
Total	<u>572.4</u> ul

● Confirmation of the insertion sequence

Date : 21.11.04

Primer A	pOTB7_F
Primer B	pOTB7_R
Primer C	-
List of Sequencing Primers	http://dna.brc.riken.jp/en/GNPclone3en.html

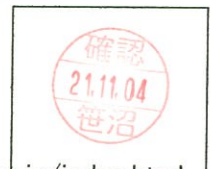
● Shipping

Conc. : 25 ng/ul, Volume : 40 ul

Conc. : ng/ul, Volume : ul

APPROVED BY :

<http://dna.brc.riken.jp/index.html>



S/N G:93 A:73 T:48 C:1

7566_IRAL026B15_B1Js_pOTB7_F

Nov 04, 2021 09:49AM, JST

KB.bcp

Primer A: pOTB7-F

KB_3500_POP7_BDTv3.mob

Gray line indicates quality value

Nov 04, 2021 10:05AM, JST

KB 1.4.1.8 Cap:1

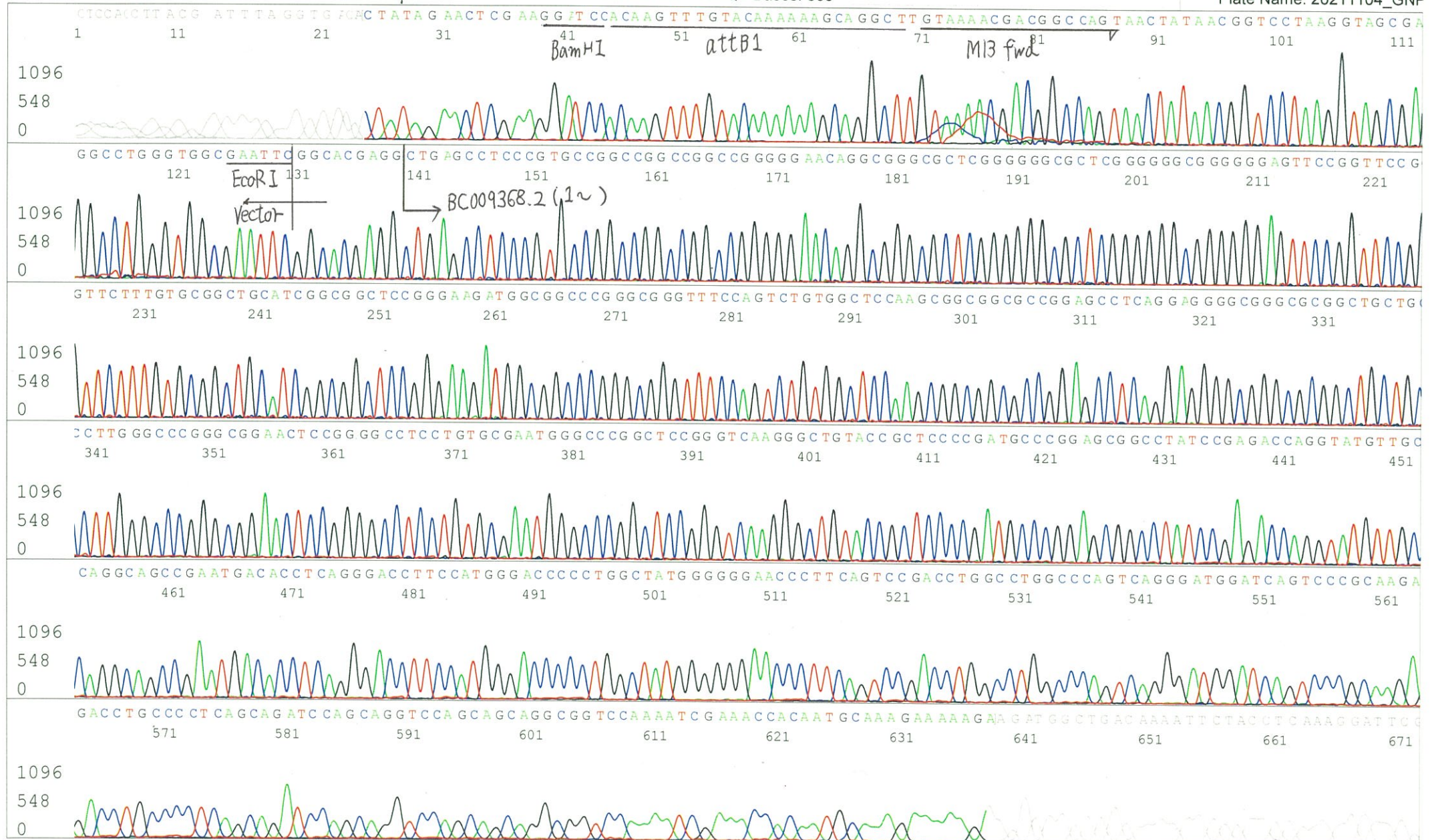
5' AACGCGGCTACAATTAATACATAACC 3'

Pts 1772 to 8704 Pk1 Loc:1740

(QV) < 40.

Spacing:10.85 Pts/Panel1350

Plate Name: 20211104_GNP



S/N G:39 A:46 T:29 C:46

Primer B: pOTB7-R

7566_IRAL026B15_B1Js_pOTB7_R

Nov 04,2021 09:49AM, JST

KB.bcp

KB_3500_POP7_BDTv3.mob

Gray line indicates quality value

Nov 04,2021 10:05AM, JST

KB 1.4.1.8 Cap:2

5' GTACTGCAGCCGATTCATTAATGC 3'

Pts 1753 to 8704 Pk1 Loc:1721

(QV) < 40.

Spacing:10.79 Pts/Panel1350

Plate Name: 20211104_GNP

