

**RIKEN Clone ID : IRAL019H14**

Vector : pDNR-LIB

Gene	CLDN10	
Accession No.	BC010920.1	978 bp
	<i>CDS</i>	687 bp

● Plasmid DNA purification

Date : 170807

Culture : LB (25 ug/ml Chloramphenicol) 5 ml -> at 37 deg C over night

Date : 170809

Purification : QIAGEN Miniprep kit -> dH<sub>2</sub>O 100 ul

● Digestion by restriction enzyme/Concentration calibration

Date : 170816

DNA concentration (O.D.): 124 ng/ul

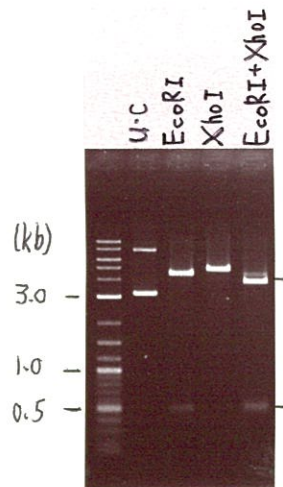
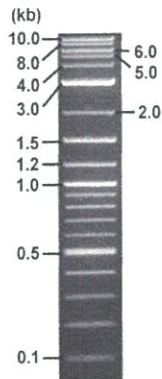
< Size of fragment expected from this clone >

DNA	0.7 ul
Enzyme (EcoRI + XhoI)	0.5 + 0.5 ul
Buffer H	1 ul
dH <sub>2</sub> O	7.3 ul
Total	10 ul

EcoRI	4.4 , 0.5 kb
XhoI	4.9 kb
EcoRI + XhoI	3.9kb (Vector)      0.5, 0.5 kb

Erectrophoresis : 1% agarose gel, 1x TAE Buffer

Marker : 2-Log DNA Ladder (NEB#N3200L)



● Adjust plasmid DNA solution to 25 ng/ul

Date : 170821

DNA ( <u>124</u> ng/ul)	80.0 ul
10x TE	39.6 ul
dH <sub>2</sub> O	277.2 ul
Total	396.8 ul

● Confirmation of the insertion sequence

Date : 170817

Primer A	T7 long
Primer B	M13 Reverse
Primer C	poly(A) region primer #0
List of Sequencing Primers	<a href="http://dna.brc.riken.jp/en/GNPclone3en.html">http://dna.brc.riken.jp/en/GNPclone3en.html</a>

● Shipping

Conc. : 25 ng/ul, Volume : 40 ul

Conc. : ng/ul, Volume : ul

APPROVED BY : <http://dna.brc.riken.jp/index.html>



S/N G:64 A:50 T:57 C:80

IRAL019H14\_A7H3\_T7long

Aug 17,2017 10:49PM, JST

KB.bcp

KB\_3500\_POP7\_BDTv3.mob

Gray line indicates quality value

Aug 17,2017 11:03PM, JST

KB 1.4.1.8 Cap:1

Primer A : T7 long

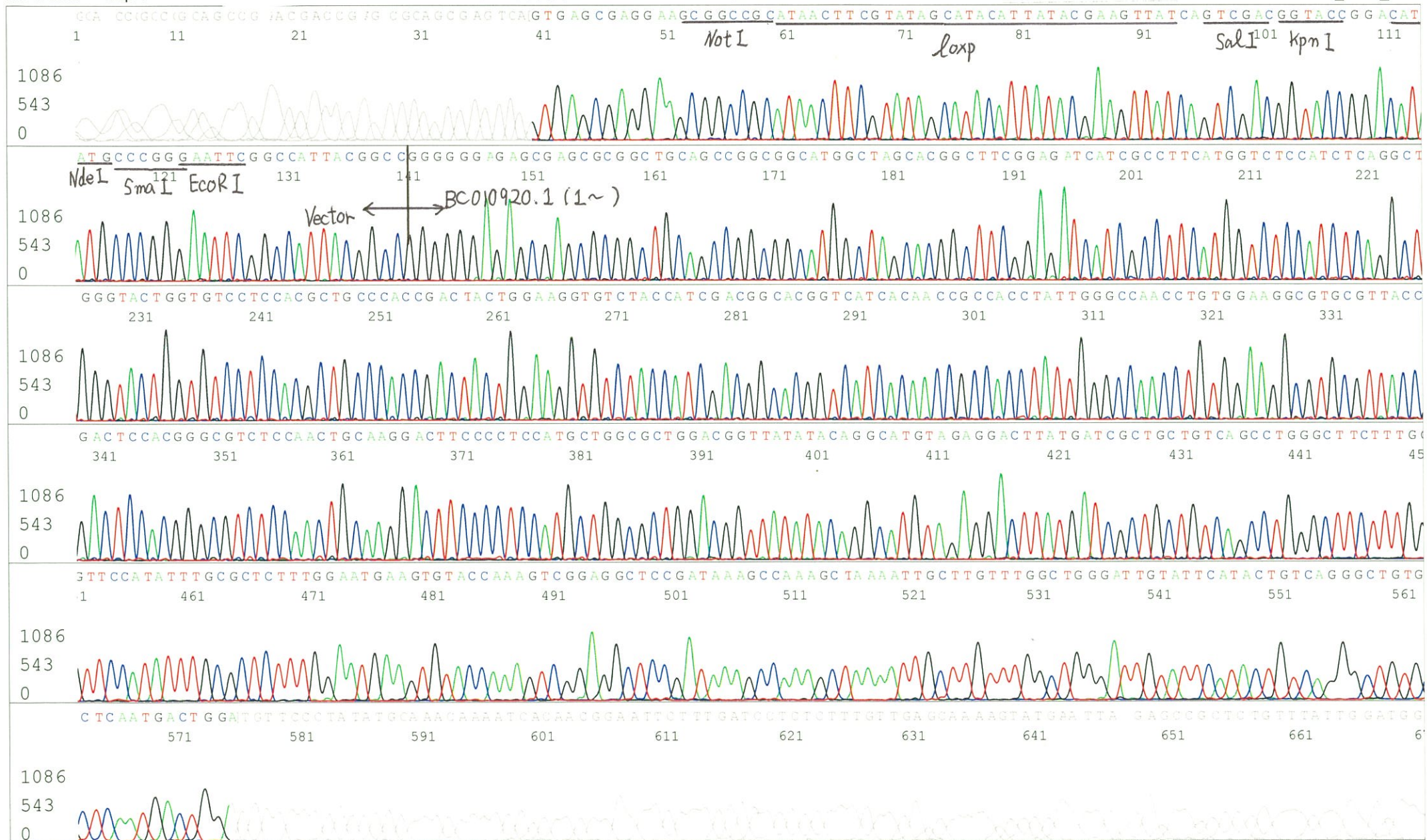
Pts 1691 to 8659 Pk1 Loc:1659

Spacing:10.57 Pts/Panel1350

5' CGCCAAGCTCTAATACGACTCACTATAGGG 3'

Version 6.0 HiSQV Bases: 706 (QV) < 40.

late Name: 20170817\_MGE\_GNP



S/N G:19 A:21 T:25 C:23

Primer B : M13 Reverse

IRAL019H14\_A7H3\_M13reverse

Aug 17,2017 10:49PM, JST

KB.bcp

KB\_3500\_POP7\_BDTv3.mob

Gray line indicates quality value

Aug 17,2017 11:03PM, JST

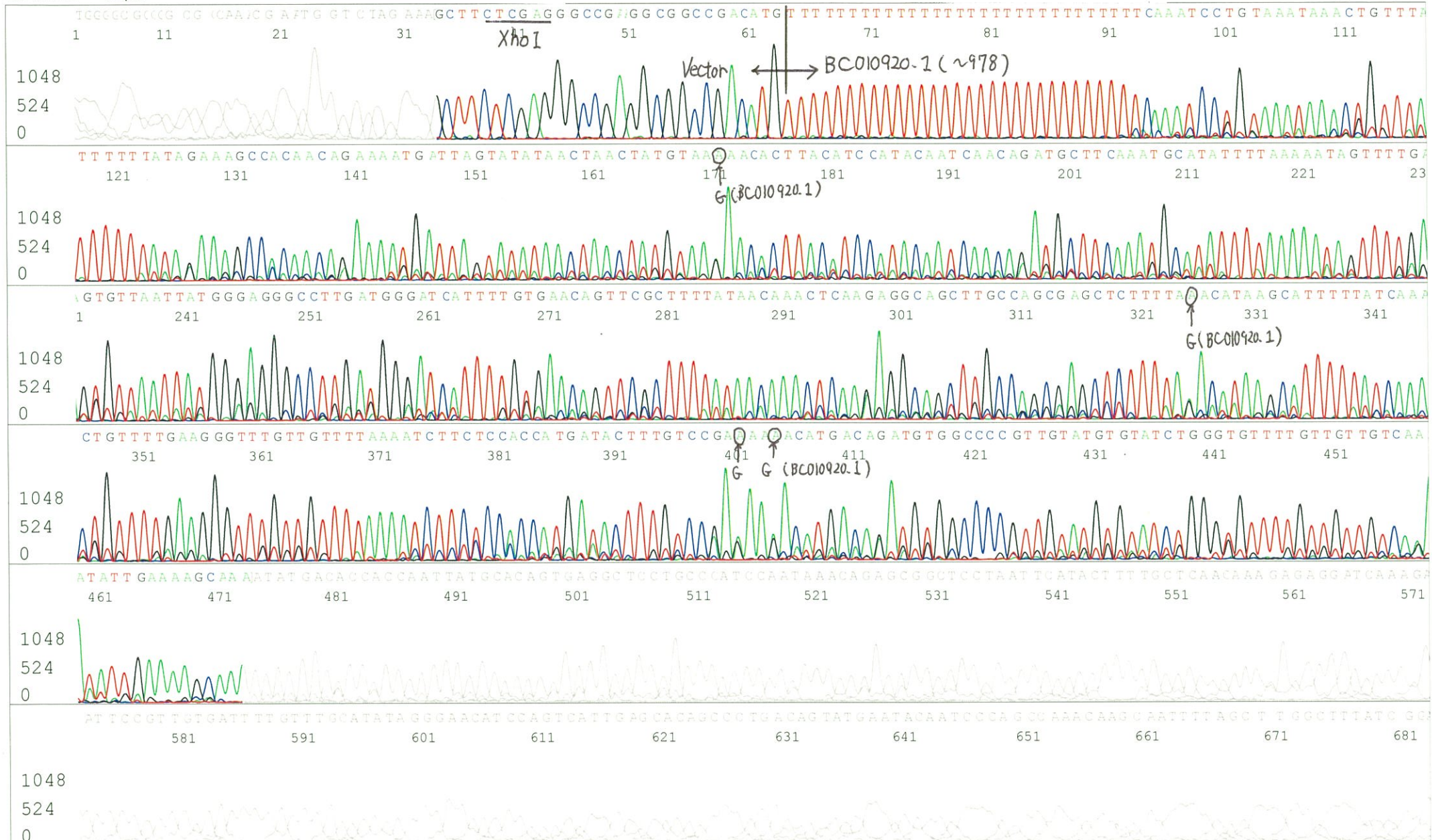
KB 1.4.1.8 Cap:2

5' AAACAGCTATGACCATGTTCA 3'

Pts 1677 to 8656 Pk1 Loc:1645

Version 6.0 HiSQV Bases: 63: (QV) < 40.

Plate Name: 20170817\_MGE\_GNP



S/N G:8 A:8 T:9 C:9

Primer C : Poly(A) region primer #0

IRAL019H14\_A7H3\_GNPmixture

KB\_3500\_POP7\_BDTv3.mob Gray line indicates quality value

Aug 17, 2017 10:49PM, JST

KB.bcp

Pts 1688 to 8553 Pk1 Loc:1656

Aug 17, 2017 11:03PM, JST

KB 1.4.1.8 Cap:3

5' TTTTTTTTTTTTTTTTTTTTTNNN 3'

Version 6.0 HiSQV Bases: 647 (QV) < 40.

Spacing:10.55 Pts/Panel1350 Plate Name: 20170817\_MGE\_GNP

