

**RIKEN Clone ID : IRAL017F15**

Vector : pOTB7

Gene	NRP1	
Accession No.	BC007737.2	2005 bp
	CDS	1830 bp

● Plasmid DNA purification

Date : 21.02.08

Culture : LB (25 ug/ml Chloramphenicol) 5 ml -> at 37 deg C over night

Date : 21.02.09

Purification : QIAGEN Miniprep kit -> dH<sub>2</sub>O 100 ul

● Digestion by restriction enzyme/Concentration calibration

Date : 21.02.09

DNA concentration (O.D.): 260 ng/ul

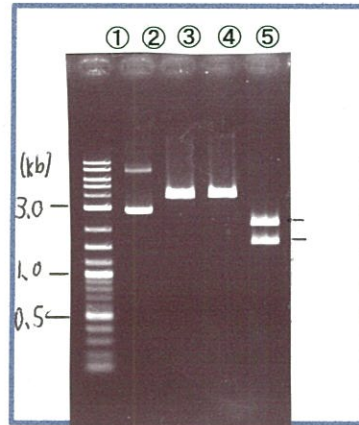
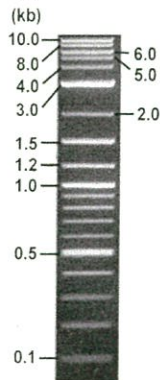
< Size of fragment expected from this clone >

DNA	<u>0.4</u> ul
Enzyme (BamHI + BglIII)	0.5 + 0.5 ul
Buffer H	1 ul
dH <sub>2</sub> O	<u>7.6</u> ul
Total	10 ul

BamHI	3.8 kb
BglIII	3.8 kb
BamHI + BglIII	1.6kb (Vector)      2.2 kb

Electrophoresis : 1% agarose gel, 1x TAE Buffer

Marker : 2-Log DNA Ladder (NEB#N3200L)



- ①:Marker
- ②:uncut
- ③:BamHI
- ④:BglIII
- ⑤:BamHI + BglIII

● Adjust plasmid DNA solution to 25 ng/ul

Date : 21.02.10

● Confirmation of the insertion sequence

Date : 21.02.10

DNA ( <u>260</u> ng/ul)	<u>90.0</u> ul
10x TE	<u>93.6</u> ul
dH <sub>2</sub> O	<u>752.4</u> ul
Total	<u>936.0</u> ul

Primer A	pOTB7_F
Primer B	pOTB7_R
Primer C	-
List of Sequencing Primers	<a href="http://dna.brc.riken.jp/en/GNPclone3en.html">http://dna.brc.riken.jp/en/GNPclone3en.html</a>

● Shipping

Conc. : 25 ng/ul, Volume : 40 ul

~~Conc. :      ng/ul, Volume :      ul~~

APPROVED BY :

<http://dna.brc.riken.jp/index.html>



S/N G:72 A:81 T:62 C:85

Primer A: pOTB7-F

7566\_IRAL017F15\_B1B8\_pOTB7\_F

Feb 10,2021 10:29AM, JST

KB.bcp

KB\_3500\_POP7\_BDTv3.mob

Gray line indicates quality value

Feb 10,2021 10:45AM, JST

KB 1.4.1.8 Cap:5

5' AACGCGGCTACAATTAATACATAACC 3'

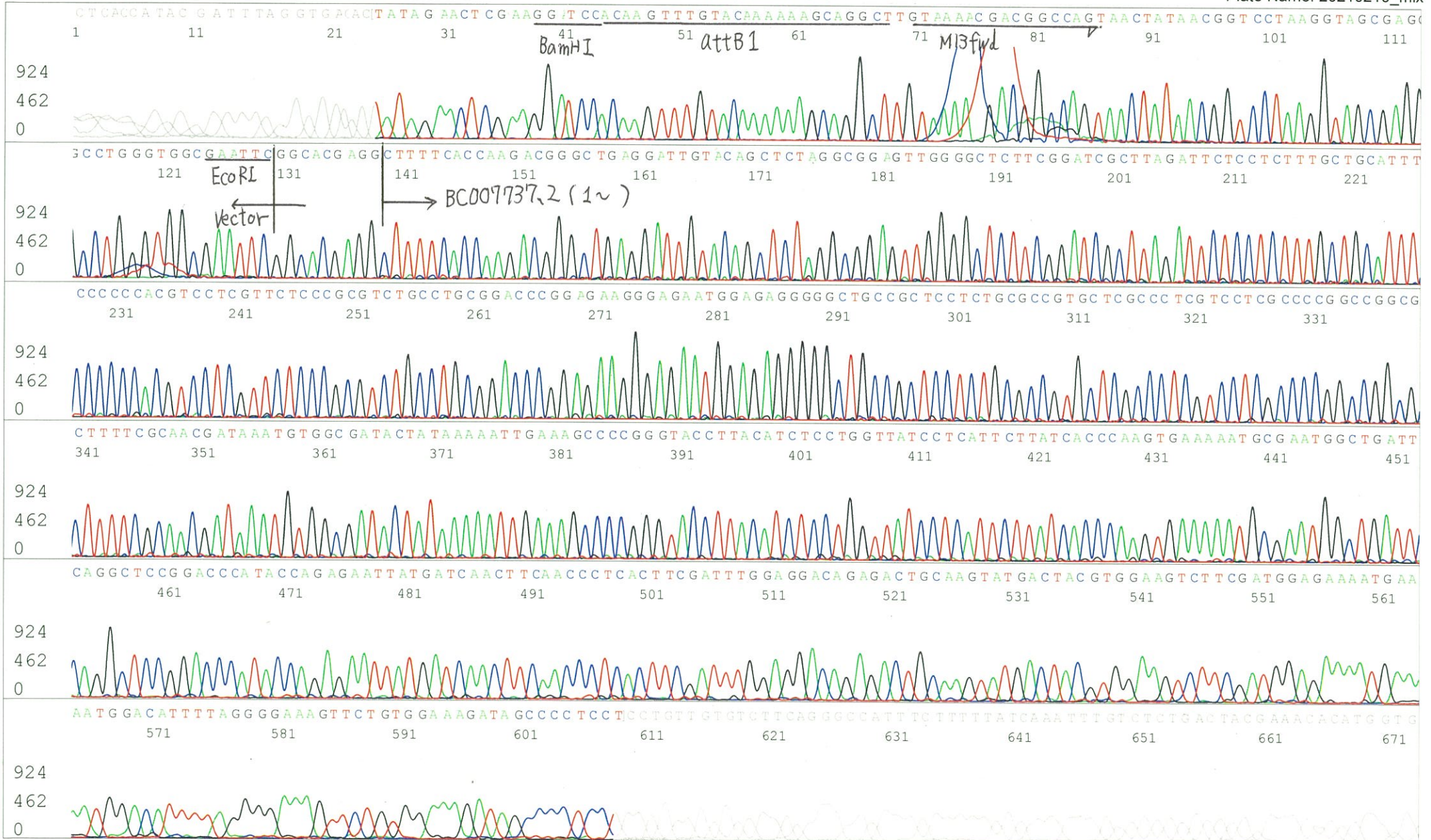
Pts 1721 to 8703 Pk1 Loc:1689

(QV) < 40.

Spacing:11.0 Pts/Panel1350

Version 6.0 HiSQV Bases: 648

Plate Name: 20210210\_mix





S/N G:41 A:46 T:42 C:52

Primer B: pOTB7-R

7566\_IRAL017F15\_B1B8\_pOTB7\_R

Feb 10,2021 10:29AM, JST

KB.bcp

KB\_3500\_POP7\_BDTv3.mob

Feb 10,2021 10:45AM, JST

KB 1.4.1.8 Cap:4

5' GTACTGCAGCCGATTCATTAATGC 3'

Pts 1727 to 8703 Pk1 Loc:1695

acing:10.96 Pts/Panel1350

Version 6.0 HiSQV Bases: 627

(QV) < 40.

late Name: 20210210\_mix

