

RIKEN clone ID: IRAL016B17

Vector : pDNR-LIB

Gene	DTNA	
Accession No.	BC005300.1	1710 bp
	<i>CDS</i>	1116 bp
		308..1423

●Plasmid DNA purification

Date : 10 08 23 Culture : LB (25 ug/ml Chloramphenicol) 3 ml →37°C O/N

Date : 10 08 24 Purification : QIAGEN Miniprep kit→dH₂O 100 ul

●Digestion by restriction enzyme / Concentration calibration

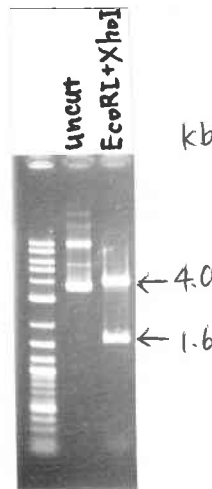
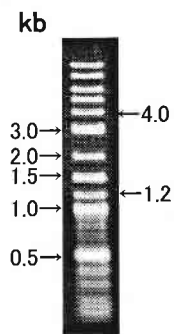
Date : 10 08 24

DNA concentration (O.D.): 128.77 ng/ul

DNA	1 ul
Enzyme (EcoRI+XhoI)	0.5+0.5 ul
Buffer H	1 ul
dH ₂ O	7 ul
Total	10 ul

Erectrophoresis: 1% agarose gel, 1 × TAE Buffer

Marker: 2-Log DNA Ladder (NEB#N3200L)



<Expected digestion pattern from BC005300.1 >

3919, 132, 1611 bp

●Adjust plasmid DNA solution to 25 ng/ul ~preparation for shipping~

Date : 100827 Shipped : 25 ng/ul, 40 ul

Final concentration: 25 ng/ul

DNA (<u>128.77 ng/ul</u>)	85	ul
10 × TE	43.8	ul
dH ₂ O	309.0	ul
Total	437.8	ul

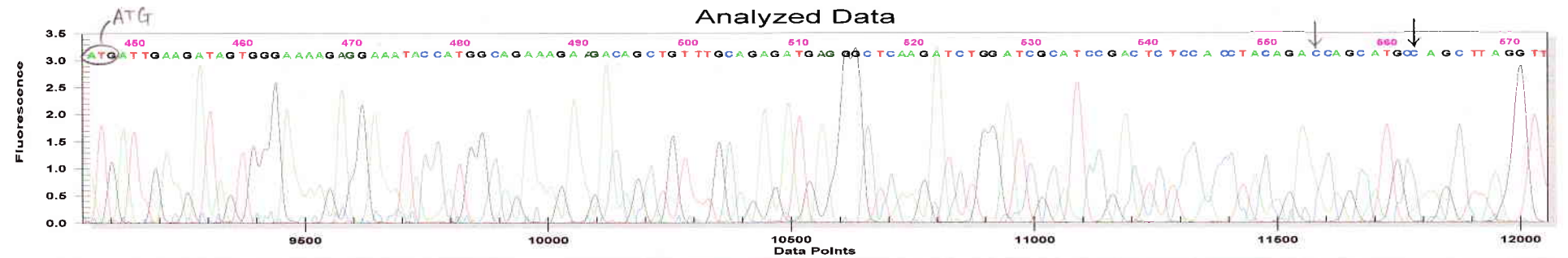
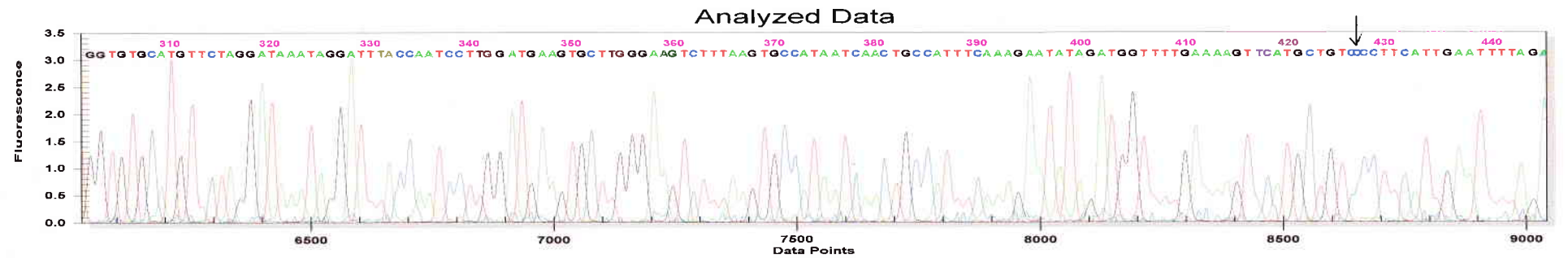
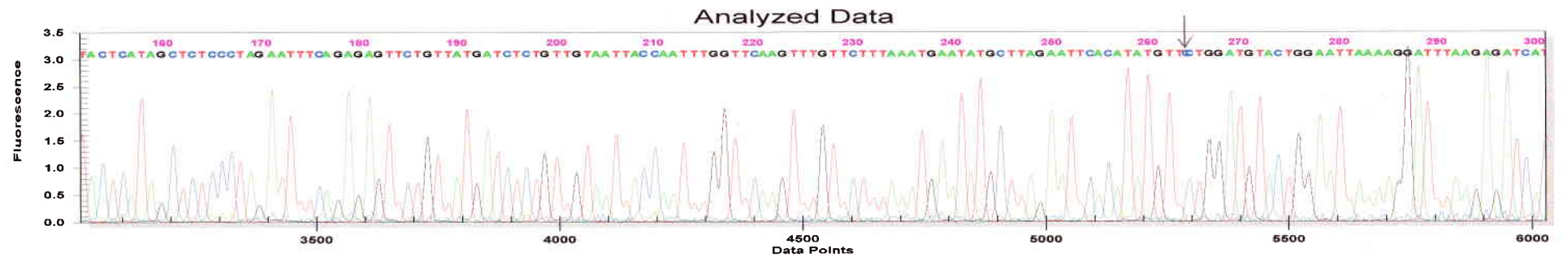
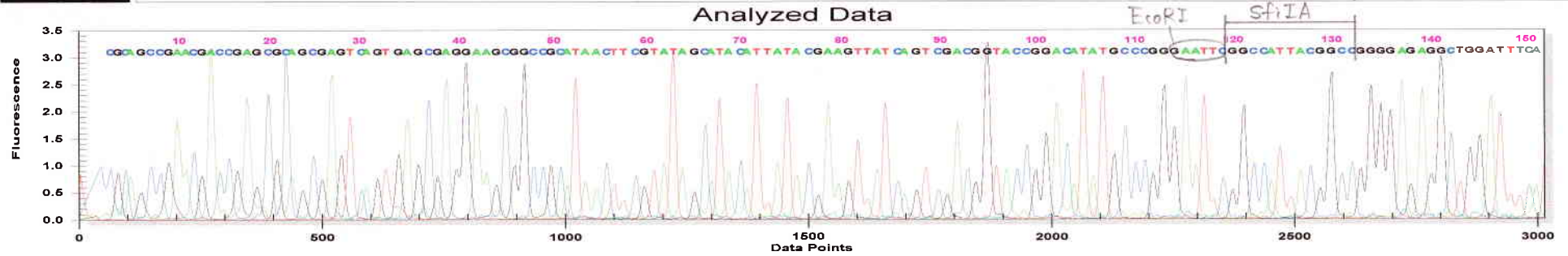


Project : GNP
 Sample : IRAL016B17_T7.A12_10082612MI
 Result : IRAL016B17_T7.A12_10082612MI

System : CEQ System

Operator : 2.100826.furu
 Instrument : CEQ System (Ver. 9.0.25)

Vector | Insert



[GENETYX : Nucleotide Sequence Homology Data]

Date : 2010.08.26

1st Nucleotide Sequence

File Name : BC005300.1.gnu
Sequence Size : 1710

2nd Nucleotide Sequence

File Name : IRAL016B17_T7.A12_10082612MI.fasta
Sequence Size : 756

Unit Size to Compare = 6

Pick up Location No. = 1

[521 / 534 bp] INT/OPT.Score : < 815/ 2001 >

1' AGAGG CTGGATTTC TACTCATAGC TCTCCCTAGA ATTCAGAGA
121" CCATTACGGC CGGGGAGAGG CTGGATTTC TACTCATAGC TCTCCCTAGA ATTCAGAGA
46' GTTCTGTAT GATCTCTGTT GTAATTACCA ATTTGGTTCA AGTTTGTCT TTAATGAAT
181" GTTCTGTAT GATCTCTGTT GTAATTACCA ATTTGGTTCA AGTTTGTCT TTAATGAAT
106' ATGCTTAGAA TTCACATATG TT-CTGGATG TACTTGAATT AAAAGGATTT AAGAGATCAT
241" ATGCTTAGAA TTCACATATG TTCTTGGATG TACTTGAATT AAAAGGATTT AAGAGATCAT
165' GGTGTGCATG TTCTAGGATA AATAGGATTT ACCAATCCTT GGATGAAGTG CTTGGGAAGT
301" GGTGTGCATG TTCTAGGATA AATAGGATTT ACCAATCCTT GGATGAAGTG CTTGGGAAGT
225' CTTTAAGTGC CATAATCAAC TGCCATTTC AAGAATATAG ATGGTTTTGA AAAGTTTATG
361" CTTTAAGTGC CATAATCAAC TGCCATTTC AAGAATATAG ATGGTTTTGA AAAGTTTATG
285' CTGT-CCCTT CATTGAATTT TAGAATGATT GAAGATAGTG GGAAAAGAGG AAATACCATG
421" CTGTCCCTT CATTGAATTT TAGAATGATT GAAGATAGTG GGAAAAGAGG AAATACCATG
344' GCAGAAAGAA GACAGCTGTT TGCAGAGATG AGGGCTCAAG ATCTGGATCG CATCCGACTC
481" GCAGAAAGAA GACAGCTGTT TGCAGAGATG AGGGCTCAAG ATCTGGATCG CATCCGACTC
404' TCCACCTACA GAACAGCATG CAAGCTTAGG TTTGTTTACA AGAAATGCAA TTTGCACCTG
541" TCCACCTACA GACCAGCATG CCAGCTTAGG TTTGTTTACA AGAAATGCAA TTTGCACCTG
464' GTGGACATAT GGAATGTCAT AGAAGCATTG C-GGGAAAAT GCT-CTGAA- CAACC-IGGA
601" GTGGACATAT GGAATGTCAT AGAAGCATTG CGGGAAAAT GCTCCTGAAC CAACCTTGA
520' CCCAAACACT GAACCAACG TGTCCCGCTT AGAGGCTGTG CTCTCCACTA TTTTACCACA
661" ACCCAAACCT ACTTGAACCC TCCAACCGTT GTTCCCGCGC CTTTAAGAAA GGCCTTGGTG
580' GCTCAACAAA CGGATGCCAA CCACTCACCA AATCCATGTG GAGCAGTCCA TCAGCCTCCT
721" CCCTCCTCCC ACCTATATTT TTTTTTAAAC CCAGGC

1st Nucleotide Sequence

File Name : BC005300.1.gnu
Sequence Size : 1710

2nd Nucleotide Sequence

File Name : IRAL016B17_M13reverse.B12_10082612MI.fasta (Complementary)
Sequence Size : 668

Unit Size to Compare = 6

Pick up Location No. = 1

[582 / 599 bp] INT/OPT.Score : < 1928/ 2232 >

1081' CCAACAGTGT CACAATTACC AGCTCTGTCA GGAAGTCTTC TGG--AGGGG ACAT-GCCGG
1" CCTGGCTTTC TGGAAGGGGG ACATGGCCGG
1138' T-GGTTCTCA TAGC-AACCA GCACAAA-T GAAAGACTAC ACCTCATGCA AATCACCTGC
31" TGGGTTCTCA TAGCAAACCA GCACAAATT GAAAGAGTAC ACCTCATGCA AATCACCTGC
1195' TAAGAAGCTG ACTAATGCAT TAAGCAAGTC CCTGAGCTGT GCTTCCAGCC GTGAACCTTT
91" TAAAAAGCTG ACTAATGCAT TTTTTTGGTC CTGTG-TGT GCTTCCAGCC GTGAACCTTT
1255' GCAGCCCATG TCCCGAGATC AGCCTGAGAA GCCACTCAAC TTGGCTCACA TCGTGCCTCC
150" GCAGCCCATG TCCCGAGATC AGCCTGAGAA GCCACTCAAC TTGGCTCACA TCGTGCCTCC
1315' CAGACCTGTA ACCAGCATGA ACGACACCCT GTTCTCCAC TCTGTTCCTT CCTCAGGAAG
210" CAGACCTGTA ACCAGCATGA ACGACACCCT GTTCTCCAC TCTGTTCCTT CCTCAGGAAG
1375' TCCITTTTAT ACCAGGAGCT CGGACGGTGC TTTTGGTGA TGCCTCTAGA TGGATAACAT
270" TCCITTTTAT ACCAGGAGCT CGGACGGTGC TTTTGGTGA TGCCTCTAGA TGGATAACAT
1435' GACTTCTTCT ACCCTAAAAT ATTCTATAA TACTTTGAGC TGTTCGTGTT CCTCCAGGTT
330" GACTTCTTCT ACCCTAAAAT ATTCTATAA TACTTTGAGC TGTTCGTGTT CCTCCAGGTT
1495' GCATGGTACC CATTAAACCA AATAATGATT ATTTCCCTTT TTTCCCAATT TCAGTCATTT
390" GCATGGTACC CATTAAACCA AATAATGATT ATTTCCCTTT TTTCCCAATT TCAGTCATTT
1555' TGGAAATGTT TCTGTGAACC ACAGTTGTGT TGTTTAAAGC TCACATTTCT TCTGTCCACC
450" TGGAAATGTT TCTGTGAACC ACAGTTGTGT TGTTTAAAGC TCACATTTCT TCTGTCCACC
1615' ACAGAGATG GCCTACGGTT TCTGTTTTGA GGGTGTGTT CAATAAAGCT GTGTACACTA
510" ACAGAGATG GCCTACGGTT TCTGTTTTGA GGGTGTGTT CAATAAAGCT GTGTACACTA
1675' AATGTCAAAA AAAAAAAAAA AAAAAAAAAA AAAAAA
570" AATGTCAAAA AAAAAAAAAA AAAAAAAAAA AAAAAACATG TCGGCCGCCCT CGGCCCTCGA