

**RIKEN Clone ID : IRAL014G22**

Lot#: 7566\_B0Hq

Vector : pOTB7

Gene	ADFP	
Accession No.	BC005127.2	1907 bp
	CDS	1314 bp

● Plasmid DNA purification

Date : 20.08.27

Culture : LB (25 ug/ml Chloramphenicol) 5 ml -> at 37 deg C over night

Date : 20.08.28

Purification : QIAGEN Miniprep kit -> dH<sub>2</sub>O 100 ul

● Digestion by restriction enzyme/Concentration calibration

Date : 20.08.28

DNA concentration (O.D.): 263 ng/ul

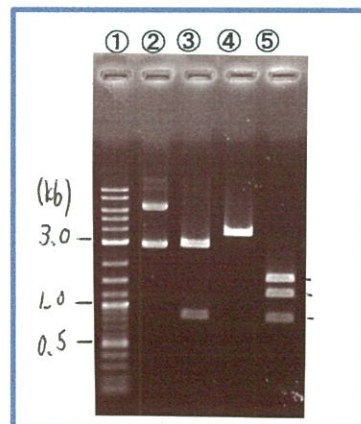
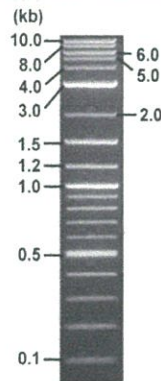
< Size of fragment expected from this clone >

DNA	0.4 ul
Enzyme (BamHI + BglII )	0.5 + 0.5 ul
Buffer H	1 ul
dH <sub>2</sub> O	7.6 ul
<b>Total</b>	<b>10 ul</b>

BamHI	2.9 , 0.8 kb
BglII	3.7 kb
BamHI + BglII	1.6kb (Vector) 1.3, 0.8 kb

Electrophoresis : 1% agarose gel, 1x TAE Buffer

Marker : 2-Log DNA Ladder (NEB#N3200L)



- ①:Marker
- ②:uncut
- ③:BamHI
- ④:BglII
- ⑤:BamHI + BglII

● Adjust plasmid DNA solution to 25 ng/ul

Date : 20.09.04

DNA ( 263 ng/ul)	85.0	ul
10x TE	89.9	ul
dH <sub>2</sub> O	719.8	ul
<b>Total</b>	<b>894.2</b>	<b>ul</b>

● Confirmation of the insertion sequence

Date : 20.09.01

Primer A	pOTB7_F
Primer B	pOTB7_R
Primer C	poly(A) region primer #0
List of Sequencing Primers	<a href="http://dna.brc.riken.jp/en/GNPclone3en.html">http://dna.brc.riken.jp/en/GNPclone3en.html</a>

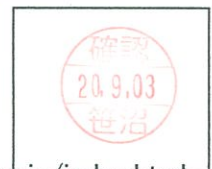
● Shipping

Conc. : 25 ng/ul, Volume : 40 ul

~~Conc. : \_\_\_\_\_ ng/ul, Volume : \_\_\_\_\_ ul~~

APPROVED BY :

<http://dna.brc.riken.jp/index.html>

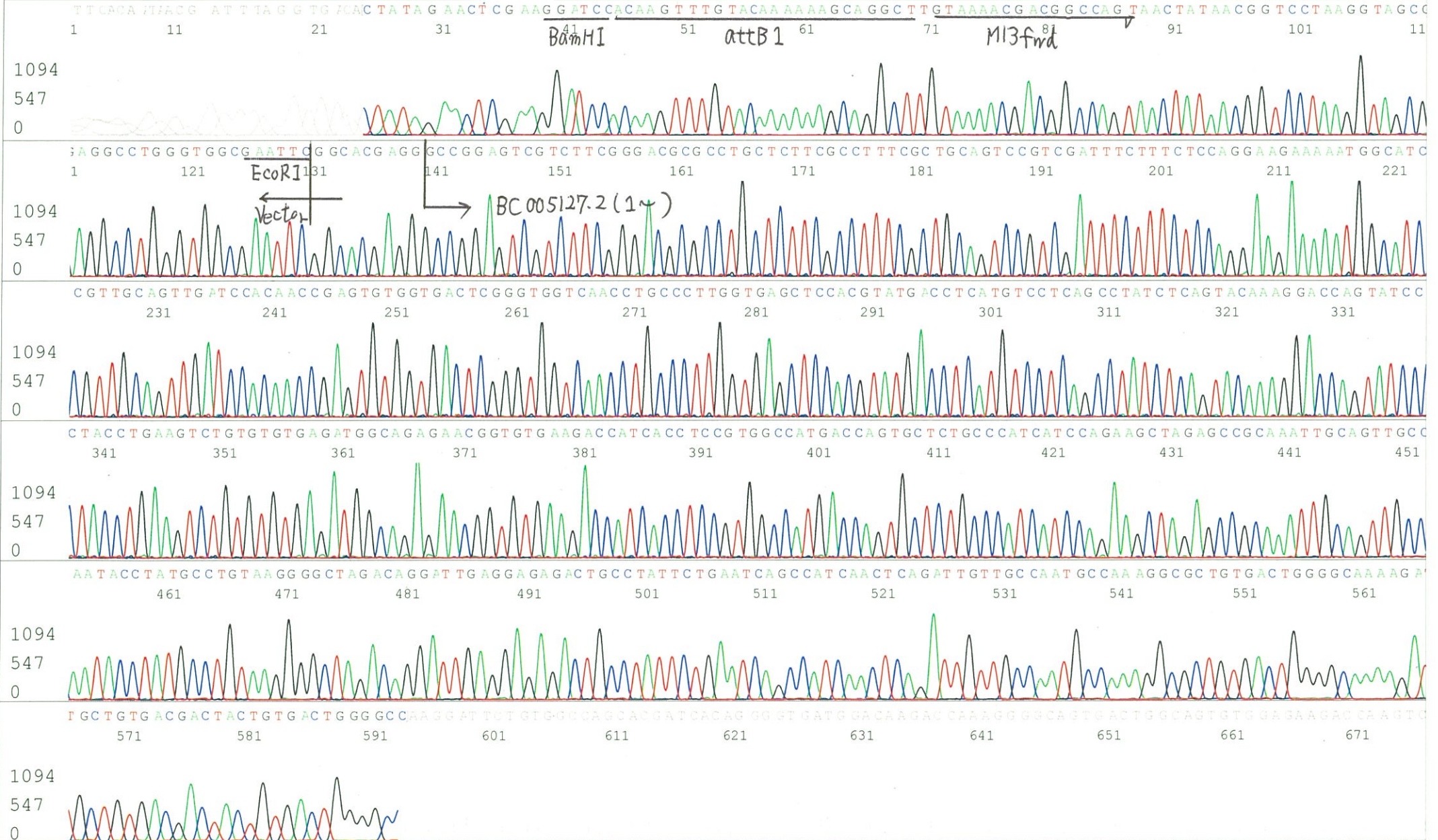


S/N G:297 A:333 T:269 C:394  
 KB.bcp  
 KB 1.4.1.8 Cap:1

Primer A: pOTB7-F

5' AACGCGGCTACAATTAATACATAACC 3'

Gray line indicates quality value  
 (QV) < 40.





S/N G:139 A:206 T:220 C:224

Primer B: pOTB7-R

7566\_IRAL014G22\_B0Hq\_pOTB7\_R

Sep 01,2020 10:02AM, JST

KB.bcp

KB\_3500\_POP7\_BDTv3.mob

Gray line indicates quality value

Sep 01,2020 10:17AM, JST

KB 1.4.1.8 Cap:2

5' GTACTGCAGCCGATTCATTAATGC 3'

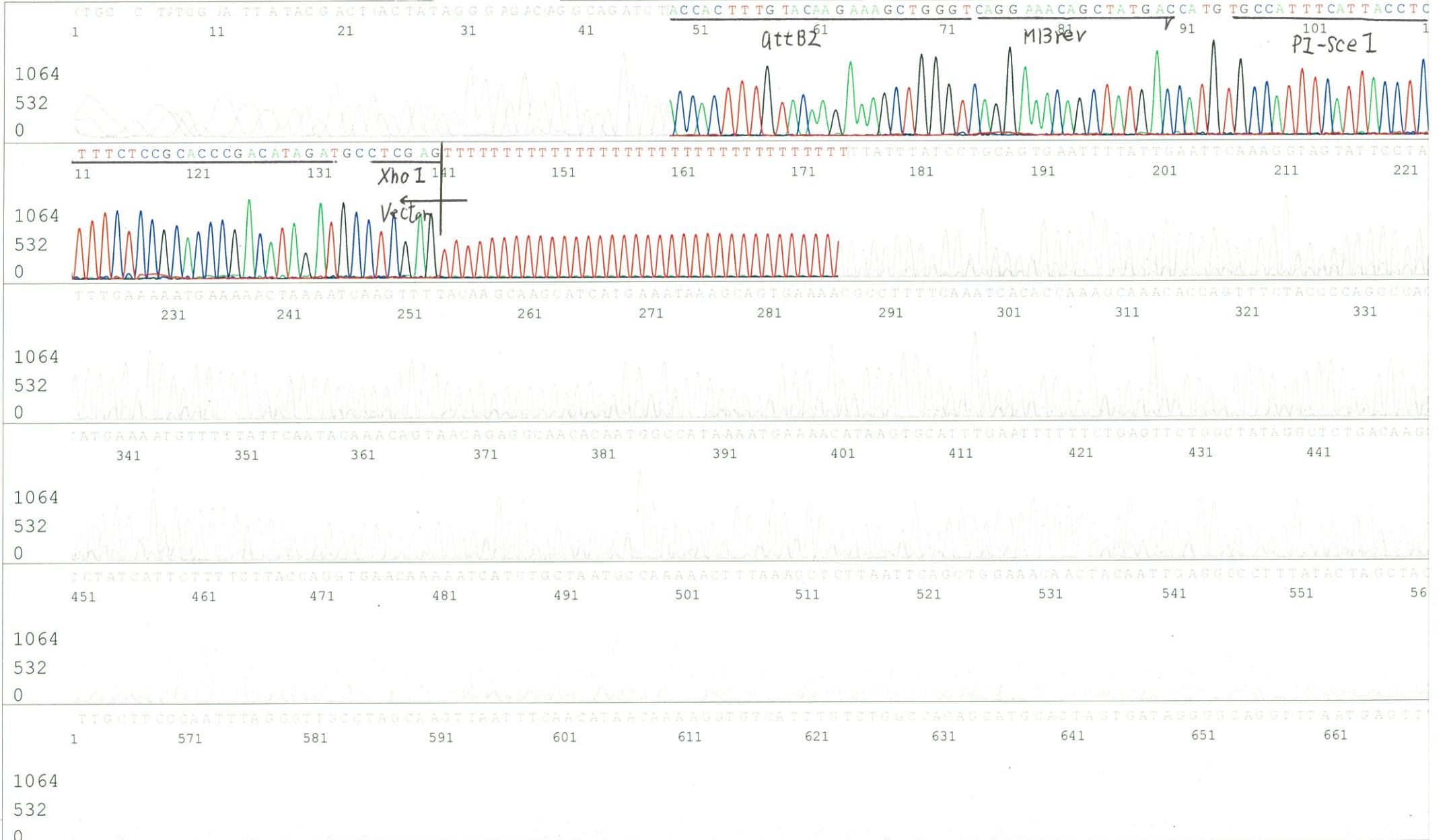
Pts 1750 to 8705 Pk1 Loc:1718

(QV) < 40.

Spacing:10.6 Pts/Panel1350

Version 6.0 HiSQV Bases: 469

Plate Name: 20200901\_GNP





S/N G:12 A:19 T:14 C:14

Primer C : Poly(A) region primer #0

7566\_IRAL014G22\_B0Hq\_GNPmixture

Sep 01,2020 01:57PM, JST

KB.bcp

KB\_3500\_POP7\_BDTv3.mob

Gray line indicates quality value

Sep 01,2020 02:25PM, JST

KB 1.4.1.8 Cap:2

5' TTTTTTTTTTTTTTTTTTTTTNNN 3'

Pts 1457 to 13078 Pk1 Loc:1434

Version 6.0 HiSQV Bases: 875

(QV) < 40.

Spacing:11.73 Pts/Panel1350

Plate Name: 20200901\_mix

