

RIKEN Clone ID : IRAL012A04

Vector : pOTB7

Gene	STAT1	
Accession No.	BC002704.2	2629 bp
	<i>CDS</i>	2139 bp

● Plasmid DNA purification

Date : 20,12,14

Culture : LB (25 ug/ml Chloramphenicol) 5 ml → at 37 deg C over night

Date : 20,12,15

Purification : QIAGEN Miniprep kit → dH₂O 100 ul

● Digestion by restriction enzyme/Concentration calibration

Date : 20,12,15

DNA concentration (O.D.): 327 ng/ul

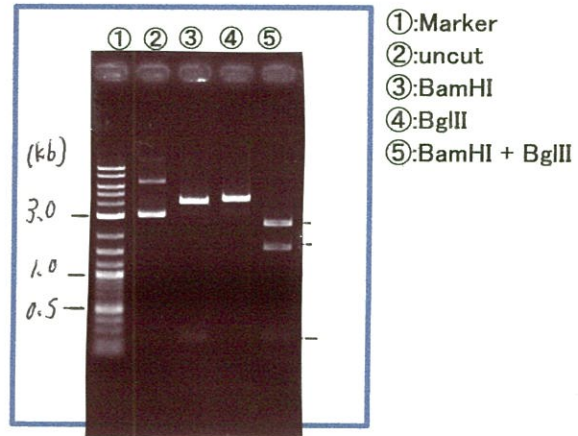
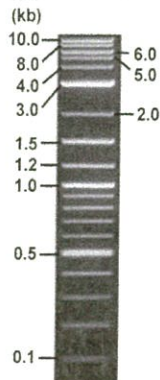
< Size of fragment expected from this clone >

DNA	<u>0.3</u> ul
Enzyme (BamHI + BglII)	0.5 + 0.5 ul
Buffer H	1 ul
dH ₂ O	<u>7.7</u> ul
Total	10 ul

BamHI	4.2, 0.2 kb
BglII	4.4 kb
BamHI + BglII	1.6kb (Vector) 2.6, 0.2kb

Electrophoresis : 1% agarose gel, 1x TAE Buffer

Marker : 2-Log DNA Ladder (NEB#N3200L)



● Adjust plasmid DNA solution to 25 ng/ul

Date : 20,12,18

● Confirmation of the insertion sequence

Date : 20,12,17

DNA (<u>327</u> ng/ul)	<u>90.0</u> ul
10x TE	<u>117.7</u> ul
dH ₂ O	<u>969.5</u> ul
Total	<u>1177.2</u> ul

Primer A	pOTB7_F
Primer B	pOTB7_R
Primer C	-
List of Sequencing Primers	http://dna.brc.riken.jp/en/GNPclone3en.html

● Shipping

Conc. : 25 ng/μl, Volume : 40 μl
 Conc. : ng/μl, Volume : μl

APPROVED BY :

<http://dna.brc.riken.jp/index.html>



S/N G:162 A:176 T:104 C:174
KB.bcp
KB 1.4.1.8 Cap:14

Primer A: pOTB7-F
5' AACGCGGCTACAATTAATACATAACC 3'

Gray line indicates quality value
(QV) < 40.

