

RIKEN Clone ID : IRAL011N20

Vector : pOTB7

Gene	ARRB1	
Accession No.	BC003636.2	1965 bp
	CDS	1257 bp

● Plasmid DNA purification

Date : 180206

Culture : LB (25 ug/ml Chloramphenicol) 5 ml -> at 37 deg C over night

Date : 180207

Purification : QIAGEN Miniprep kit -> dH₂O 100 ul

● Digestion by restriction enzyme/Concentration calibration

Date : 180207

DNA concentration (O.D.): 63 ng/ul

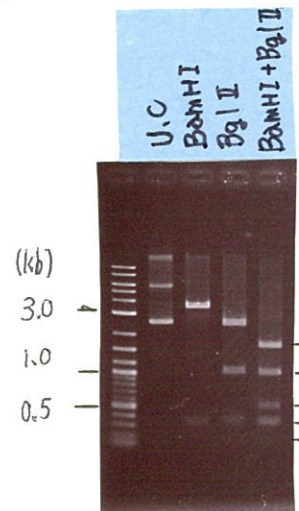
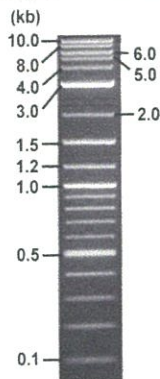
< Size of fragment expected from this clone >

DNA	ul
Enzyme (BamHI + BglII)	0.5 + 0.5 ul
Buffer H	1 ul
dH ₂ O	ul
Total	10 ul

BamHI	3.5, 0.3 kb
BglII	2.4, 1.0, 0.3, 0.1 kb
BamHI + BglII	1.6kb (Vector) 1.0, 0.5, 0.3, 0.3, 0.1kb

Electrophoresis : 1% agarose gel, 1x TAE Buffer

Marker : 2-Log DNA Ladder (NEB#N3200L)



● Adjust plasmid DNA solution to 25 ng/ul

Date : 180221

DNA (<u>63</u> ng/ul)	<u>65.0</u> ul
10x TE	<u>16.3</u> ul
dH ₂ O	<u>82.5</u> ul
Total	<u>163.8</u> ul

● Confirmation of the insertion sequence

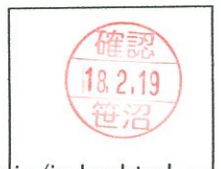
Date : 180214

Primer A	pOTB7_F
Primer B	pOTB7_R
Primer C	-
List of Sequencing Primers	http://dna.brc.riken.jp/en/GNPclone3en.html

● Shipping

Conc. : 25 ng/ul, Volume : 40 ul

Conc. : ng/ul, Volume : ul



APPROVED BY :

<http://dna.brc.riken.jp/index.html>

S/N G:94 A:143 T:115 C:208

Primer A: pOTB7-F

IRAL011N20_1_A8B5_pOTB7_F

KB_3500_POP7_BDTv3.mob

Gray line indicates quality value

Feb 14,2018 10:16AM, JST

KB.bcp

Pts 1903 to 8706 Pk1 Loc:1871

Feb 14,2018 10:31AM, JST

KB 1.4.1.8 Cap:3

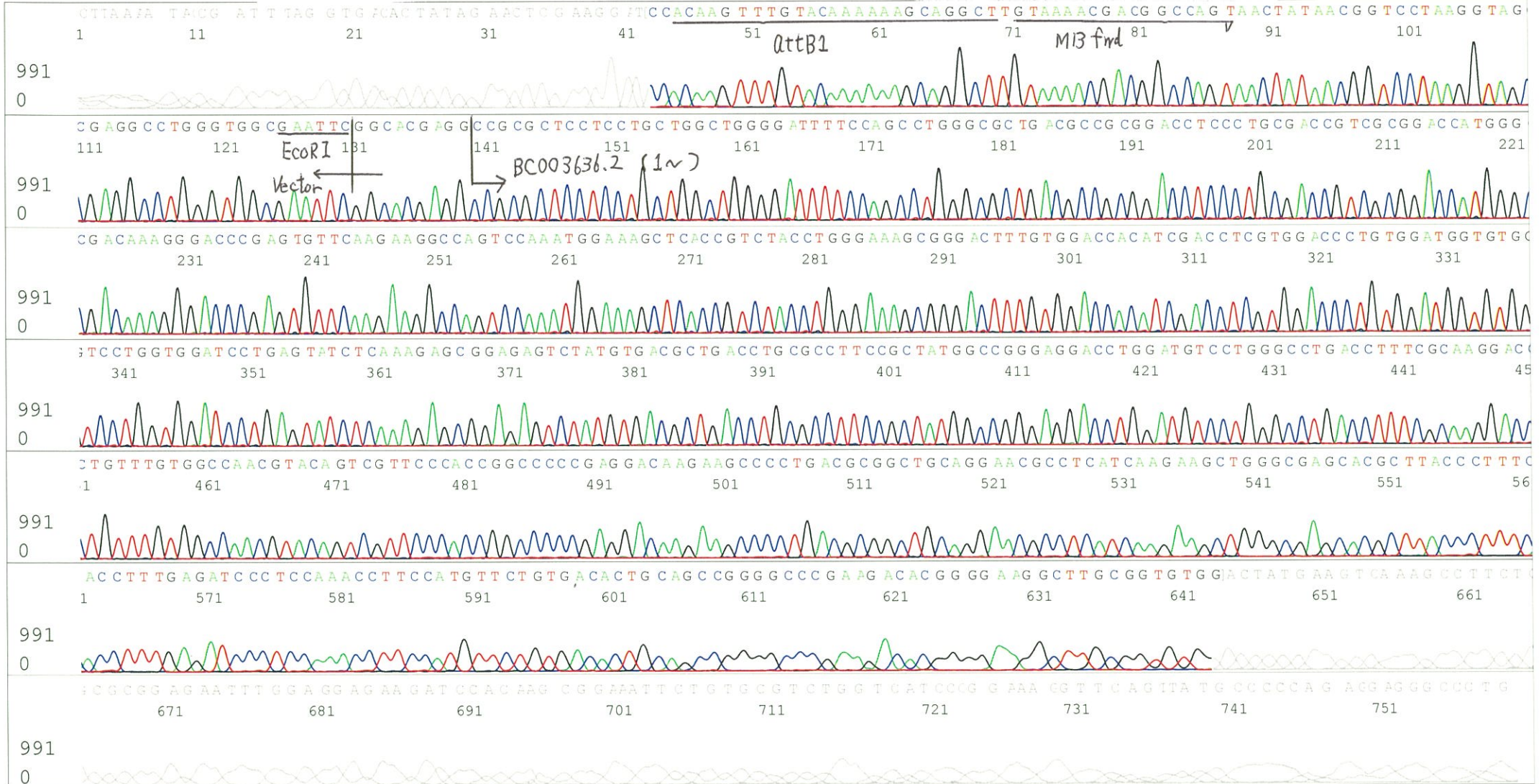
5' AACGCGGCTACAATTAATACATAACC 3'

Version 6.0 HiSQV Bases: 709

(QV) < 40.

Spacing:10.37 Pts/Panel1350

Plate Name: 20180214_GNP



S/N G:158 A:247 T:185 C:349

Primer B: pOTB7-R

IRAL011N20_1_A8B5_pOTB7_R

Feb 14,2018 10:16AM, JST

KB.bcp

KB_3500_POP7_BDTv3.mob

Gray line indicates quality value

Feb 14,2018 10:31AM, JST

KB 1.4.1.8 Cap:6

5' GTACTGCAGCCGATTCATTAATGC 3'

Pts 1902 to 8706 Pk1 Loc:1870

Version 6.0 HiSQV Bases: 695

(QV) < 40.

Spacing:10.27 Pts/Panel1350

Plate Name: 20180214_GNP

