

RIKEN Clone ID : IRAL011M05

Vector : pOTB7

Gene	BRRN1	
Accession No.	BC024211.2	2802 bp
	<i>GDS</i>	2226 bp
		1..2802
		44..2269

● Plasmid DNA purification

Date : 141028

Culture : LB (25 ug/ml Chloramphenicol) 5 ml -> at 37 deg C over night

Date : 141029

Purification : QIAGEN Miniprep kit -> dH₂O 100 ul

● Digestion by restriction enzyme/Concentration calibration

Date : 141029

DNA concentration (O.D.): 41 ng/ul

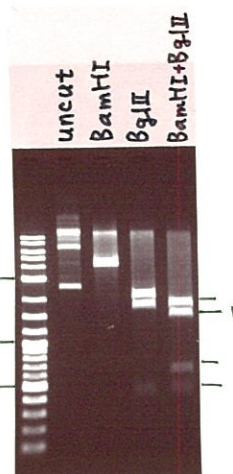
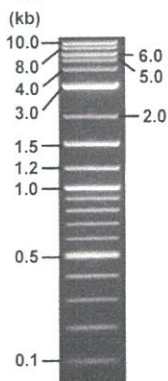
< Size of fragment expected from IRAL011M05 >

DNA	1	ul
Enzyme (BamHI + BglII)	0.5 + 0.5	ul
Buffer H	1	ul
dH ₂ O	7	ul
Total	10	ul

BamHI	4603 bp
BglII	2238, 1912, 453 bp
BamHI + BglII	1615bp (Vector) 1912, 623, 453 bp

Electrophoresis : 1% agarose gel, 1x TAE Buffer

Marker : 2-Log DNA Ladder (NEB#N3200L)



● Adjust plasmid DNA solution to 25 ng/ul

Date : 141113

● Confirmation of the insertion sequence

Date : 141112

DNA (<u>41</u> ng/ul)	60.0	ul
10x TE	9.8	ul
dH ₂ O	28.6	ul
Total	98.4	ul

Primer A	pOTB7_F
Primer B	pOTB7_R
Primer C	Poly(A) region primer #38
List of Sequencing Primers	http://dna.brc.riken.jp/en/GNPclone3en.html

● Shipping

Conc. : 25 ng/ul, Volume : 40 ul

~~Conc. : ng/ul, Volume : ul~~

APPROVED BY :

<http://dna.brc.riken.jp/index.html>



S/N G:162 A:216 T:142 C:203

Primer A: pOTB7-F

KB.bcp

5' AACGCGGCTACAATTAATACATAACC 3'

KB 1.4.1.8 Cap:12

IRAL011M05_A4Jn_pOTB7_F

KB_3500_POP7_BDTv3.mob

Pts 1326 to 12828 Pk1 Loc:1303

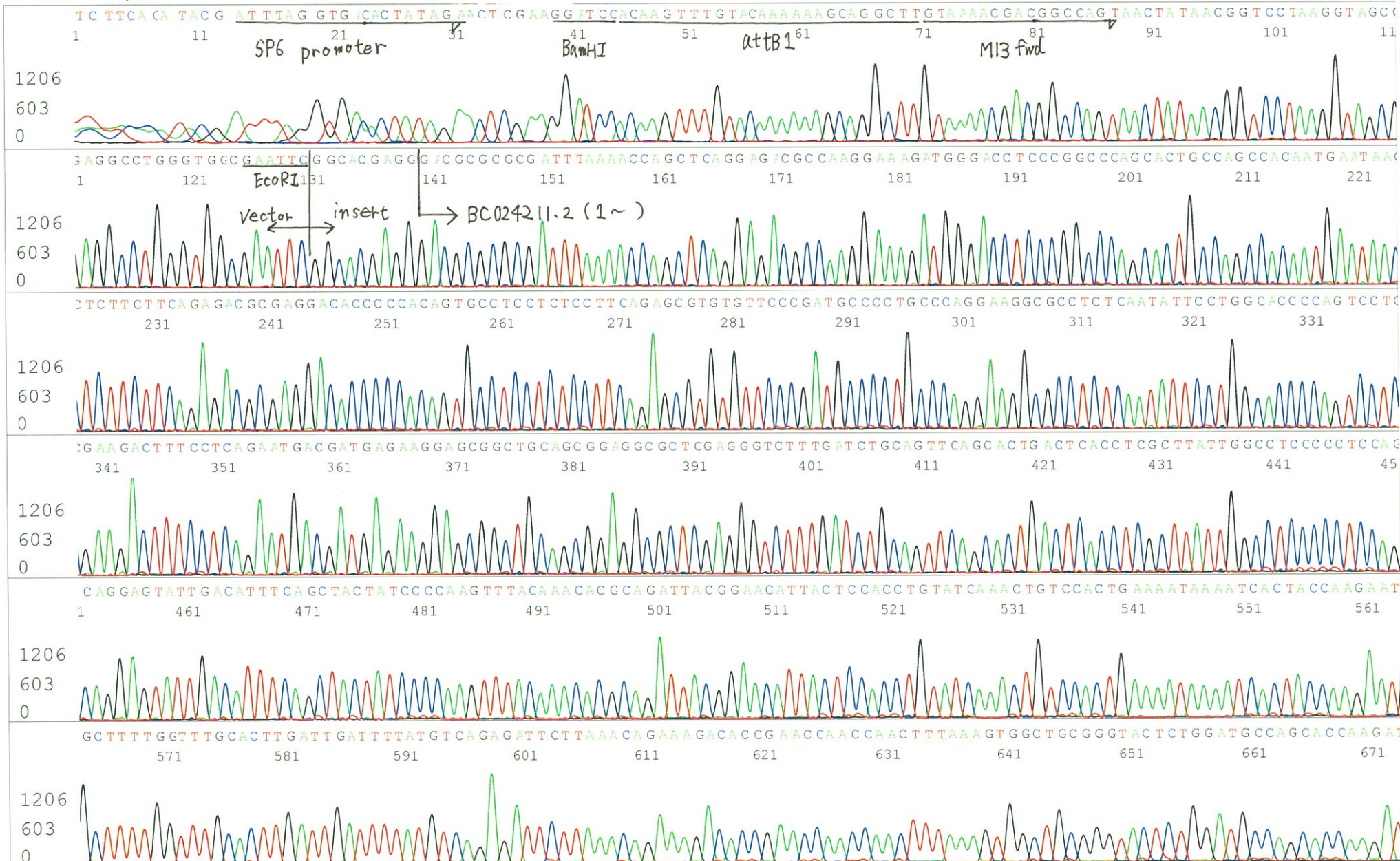
Version 5.4 HiSQV Bases: 999

Oct 30, 2014 09:43AM, JST

Oct 30, 2014 10:09AM, JST

Spacing: 11.4 Pts/Panel 1350

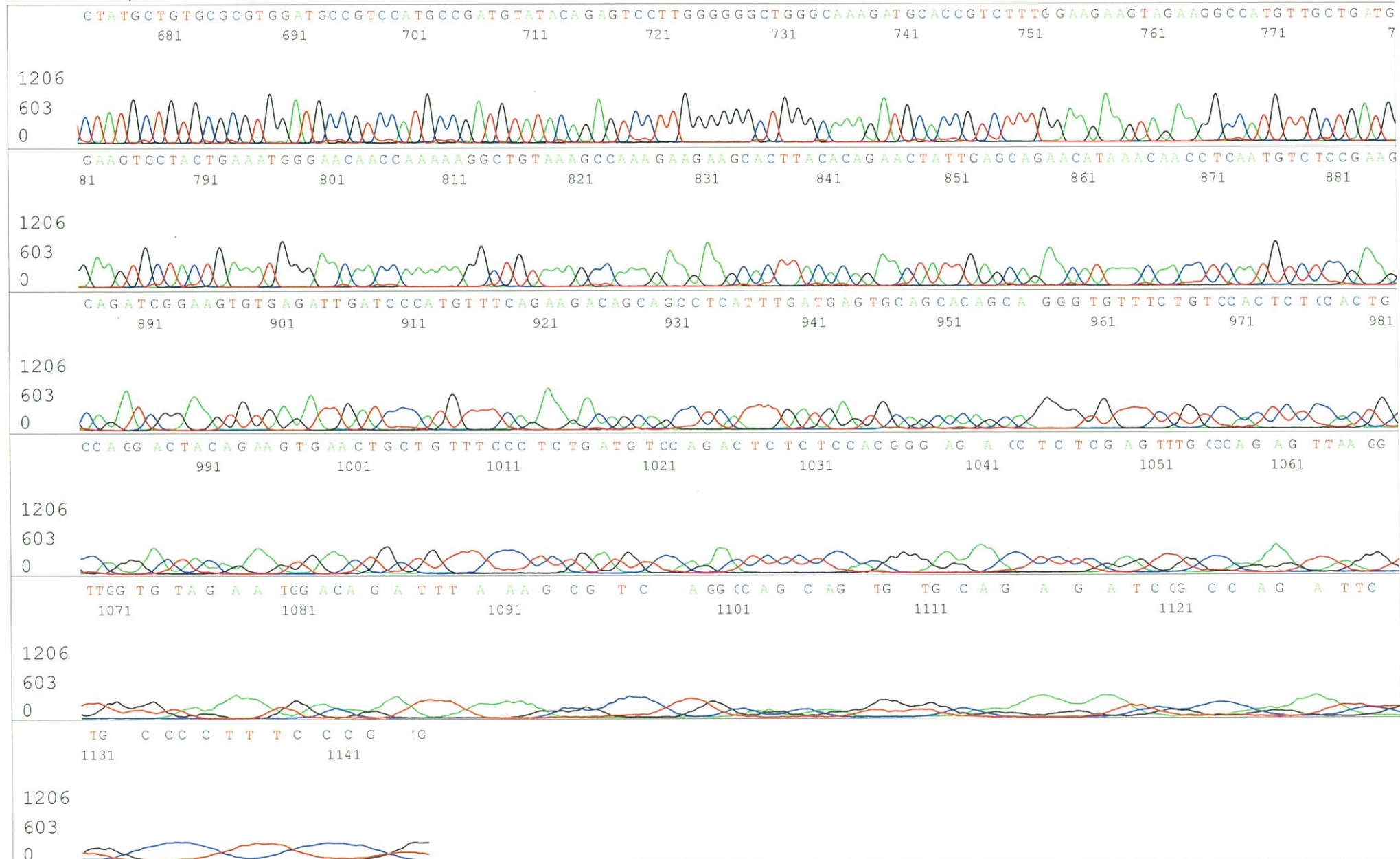
Plate Name: 20141030_mix



S/N G:162 A:216 T:142 C:203

KB.bcp

KB 1.4.1.8 Cap:12



S/N G:11 A:12 T:11 C:13

Primer B: pOTB7-R

IRAL011M05_A4Jn_pOTB7_R

Oct 30, 2014 09:43AM, JST

KB.bcp

KB_3500_POP7_BDTv3.mob

Oct 30, 2014 10:09AM, JST

KB 1.4.1.8 Cap:15

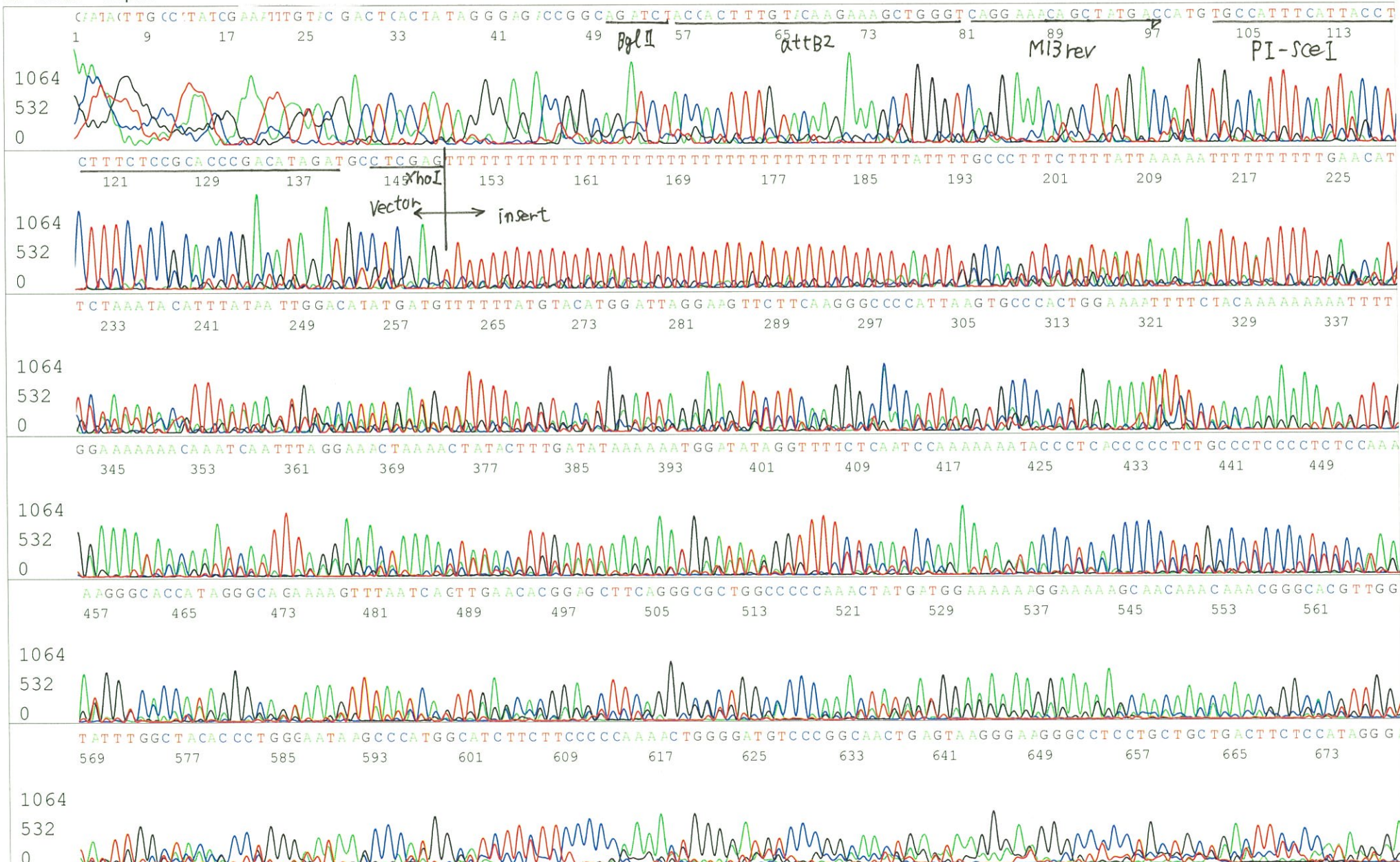
5' GTACTGCAGCCGATTCATTAATGC 3'

Pts 1310 to 12968 Pk1 Loc:1287

Spacing:11.54 Pts/Panel1350

Version 5.4 HiSQV Bases: 658

Plate Name: 20141030_mix

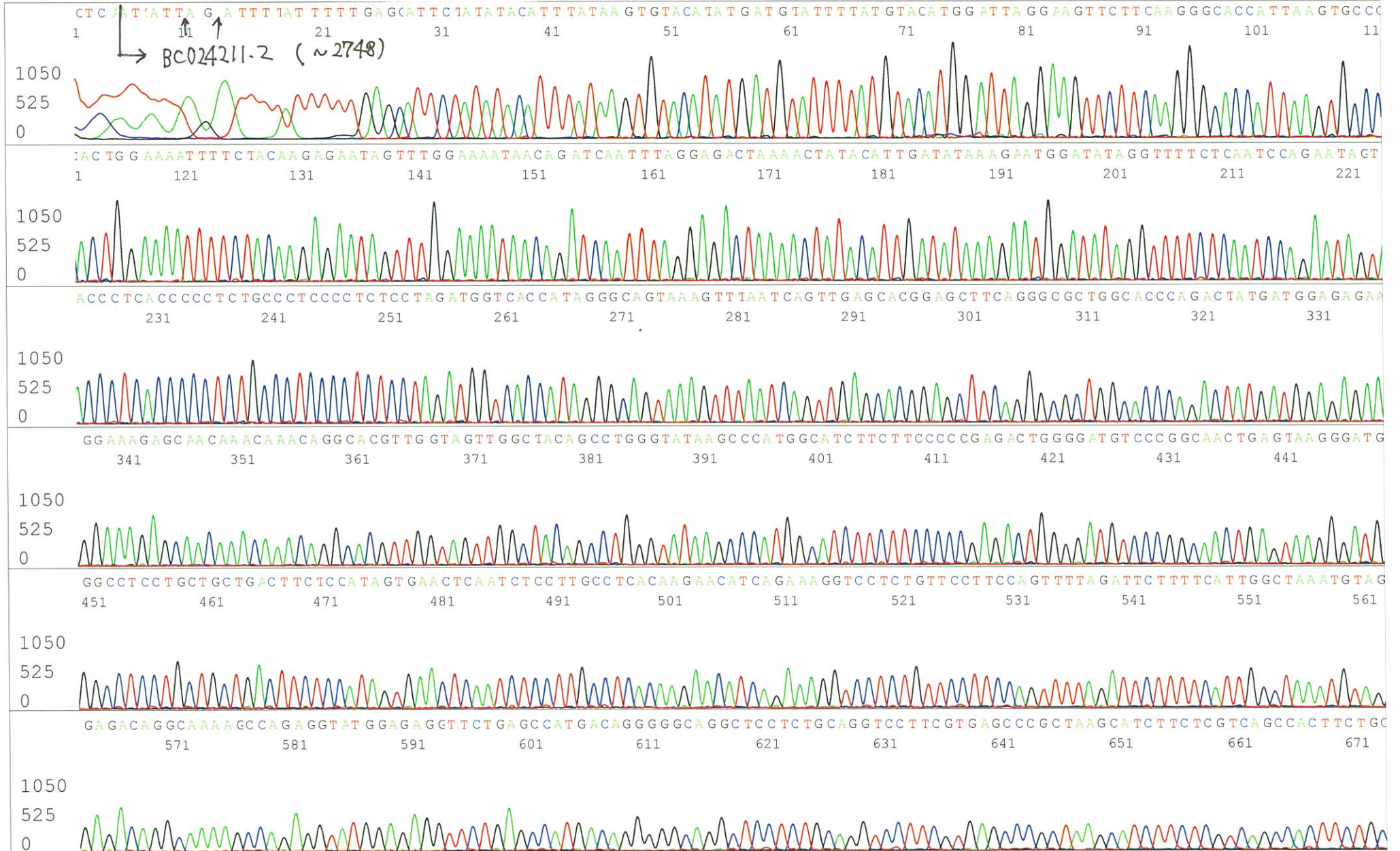


S/N G:11 A:12 T:11 C:13
KB.bcp
KB 1.4.1.8 Cap:15



S/N G:392 A:380 T:210 C:18;
KB.bcp
KB 1.4.1.8 Cap:13

Primer C : Poly(A) region primer # 38
5' TTTTTTTTTTTTTTTTTTTTTTTT ATT 3'



S/N G:392 A:380 T:210 C:182
KB.bcp
KB 1.4.1.8 Cap:13

