

**RIKEN Clone ID : IRAL011H07**

Lot#: 7566\_B1Kh

Vector : pOTB7

Gene	GLI1	
Accession No.	BC013000.2	3578 bp
	CDS	3321 bp

● Plasmid DNA purification

Date : 21.11.25

Culture : LB (25 ug/ml Chloramphenicol) 5 ml -> at 37 deg C over night

Date : 21.11.30

Purification : QIAGEN Miniprep kit -> dH<sub>2</sub>O 100 ul

● Digestion by restriction enzyme/Concentration calibration

Date : 21.11.30

DNA concentration (O.D.): 305 ng/ul

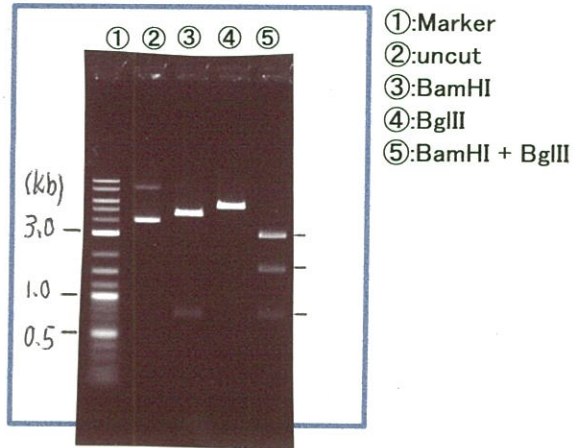
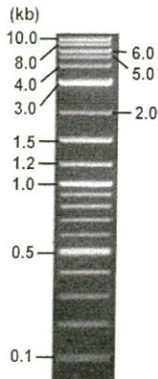
< Size of fragment expected from this clone >

DNA	<u>0.3</u> ul
Enzyme (BamHI + BglII)	0.5 + 0.5 ul
Buffer H	1 ul
dH <sub>2</sub> O	<u>7.7</u> ul
Total	10 ul

BamHI	4.6 , 0.8 kb
BglII	5.4 kb
BamHI + BglII	1.6kb (Vector)      3.0, 0.8 kb

Erectrophoresis : 1% agarose gel, 1x TAE Buffer

Marker : 2-Log DNA Ladder (NEB#N3200L)



● Adjust plasmid DNA solution to 25 ng/ul

Date : 21.12.2

● Confirmation of the insertion sequence

DNA ( <u>305</u> ng/ul)	<u>88.0</u>	ul
10x TE	<u>107.3</u>	ul
dH <sub>2</sub> O	<u>878.3</u>	ul
Total	<u>1073.6</u>	ul

Date : 21.12.2

Primer A	pOTB7_F
Primer B	pOTB7_R
Primer C	-
List of Sequencing Primers	<a href="http://dna.brc.riken.jp/en/GNPclone3en.html">http://dna.brc.riken.jp/en/GNPclone3en.html</a>

● Shipping

Conc. : 25 ng/ul, Volume : 40 ul

Conc. :      ng/ul, Volume :      ul

APPROVED BY :

<http://dna.brc.riken.jp/index.html>



S/N G:99 A:107 T:72 C:133

Primer A: pOTB7-F

7566\_IRAL011H07\_B1Kh\_TR2\_pOTB7\_F

Dec 01,2021 11:57AM, JST

KB.bcp

KB\_3500\_POP7\_BDTv3.mob

Gray line indicates quality value

Dec 01,2021 12:12PM, JST

KB 1.4.1.8 Cap:1

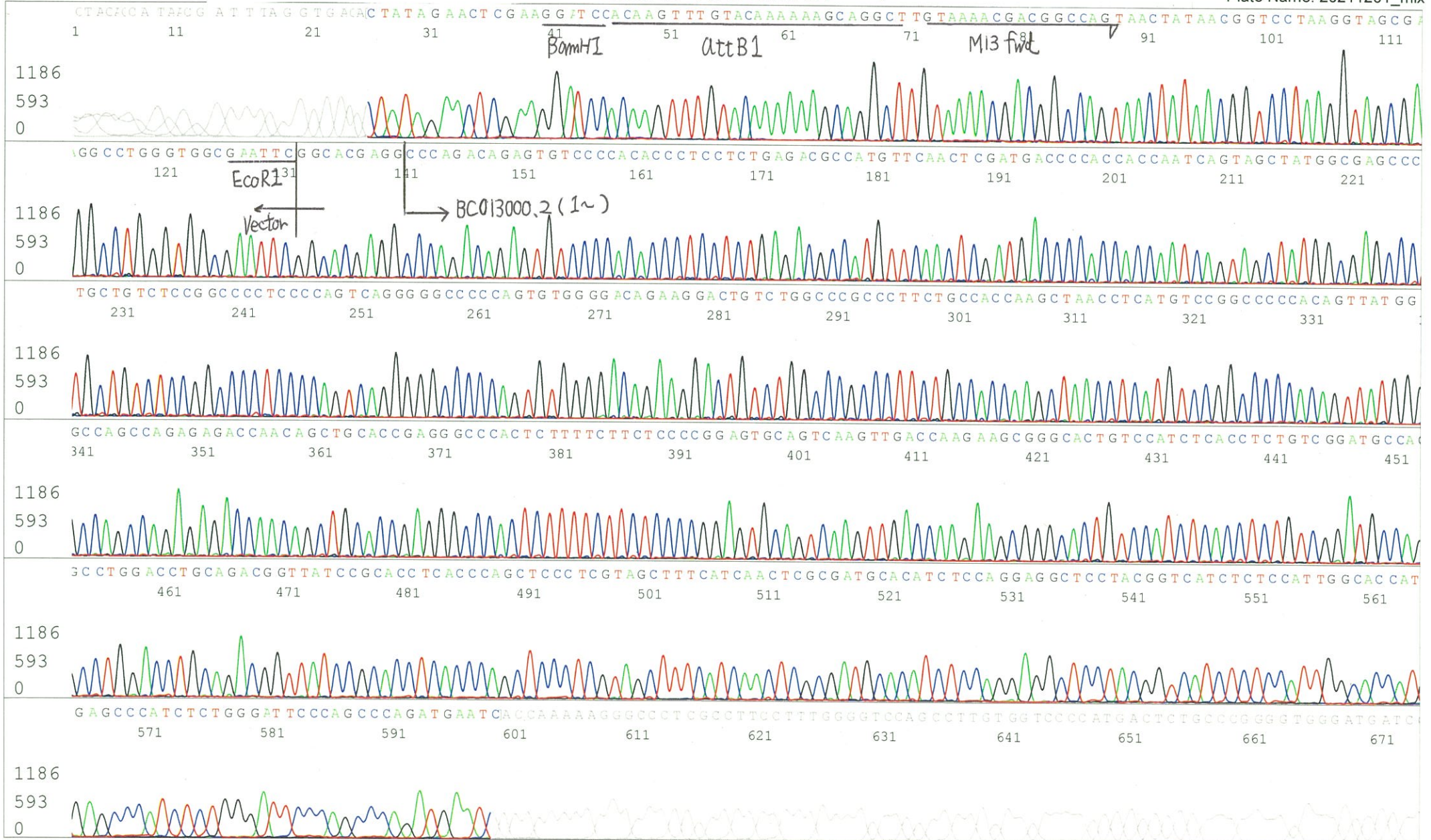
5' AACGCGGCTACAATTAATACATAACC 3'

Pts 1688 to 8693 Pk1 Loc:1656

Version 6.0 HiSQV Bases: 677 (QV) < 40.

Spacing:10.63 Pts/Panel1350

Plate Name: 20211201\_mix



S/N G:73 A:96 T:68 C:83

Primer B: pOTB7-R

7566\_IRAL011H07\_B1Kh\_TR2\_pOTB7\_R

KB\_3500\_POP7\_BDTv3.mob

Gray line indicates quality value

Dec 01,2021 11:57AM, JST

KB.bcp

Pts 1674 to 8634 Pk1 Loc:1642

Dec 01,2021 12:12PM, JST

KB 1.4.1.8 Cap:2

5' GTACTGCAGCCGATTCATTAATGC 3'

Version 6.0 HiSQV Bases: 649

(QV) < 40.

Spacing:10.62 Pts/Panel1350

Plate Name: 20211201\_mix

