

RIKEN Clone ID : IRAL011F17

Lot#: 7566_A6D4

Vector : pOTB7

Gene	CHEK2	
Accession No.	BC004207.2	1740 bp
	<i>CDS</i>	1632 bp

● Plasmid DNA purification

Date : 160404

Culture : LB (25 ug/ml Chloramphenicol) 5 ml -> at 37 deg C over night

Date : 160406

Purification : QIAGEN Miniprep kit -> dH₂O 100 ul

● Digestion by restriction enzyme/Concentration calibration

Date : 160406

DNA concentration (O.D.): 92 ng/ul

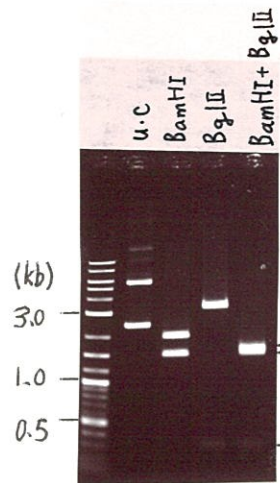
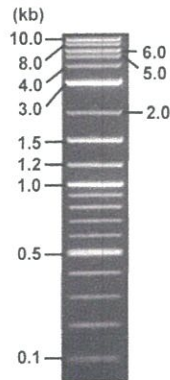
< Size of fragment expected from this clone >

DNA	<u>1</u>	ul
Enzyme (BamHI + BglII)	<u>0.5 + 0.5</u>	ul
Buffer H	<u>1</u>	ul
dH ₂ O	<u>7</u>	ul
Total	<u>10</u>	ul

BamHI	<u>2.0</u>	<u>1.5</u>	kb
BglII	<u>3.2</u>	<u>0.32</u>	kb
BamHI + BglII	<u>1.6kb (Vector)</u>	<u>1.5, 0.32, 0.08</u>	kb

Electrophoresis : 1% agarose gel, 1x TAE Buffer

Marker : 2-Log DNA Ladder (NEB#N3200L)



● Adjust plasmid DNA solution to 25 ng/ul

Date : 160413

DNA (<u>92</u> ng/ul)	<u>75.0</u>	ul
10x TE	<u>27.6</u>	ul
dH ₂ O	<u>173.4</u>	ul
Total	<u>276.0</u>	ul

● Confirmation of the insertion sequence

Date : 160413

Primer A	pOTB7_F
Primer B	pOTB7_R
Primer C : Poly(A) region primer # <u>19</u>	
List of Sequencing Primers	http://dna.brc.riken.jp/en/GNPclone3en.html

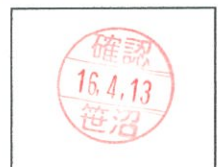
● Shipping

Conc. : 25 ng/ul, Volume : 40 ul

Conc. : ng/ul, Volume : ul

APPROVED BY :

<http://dna.brc.riken.jp/index.html>



S/N G:443 A:254 T:237 C:294

Primer A: pOTB7-F

IRAL011F17_A6D4_pOTB7_F

Apr 08,2016 11:50AM, JST

KB.bcp

KB_3500_POP7_BDTv3.mob

Apr 08,2016 12:17PM, JST

KB 1.4.1.8 Cap:2

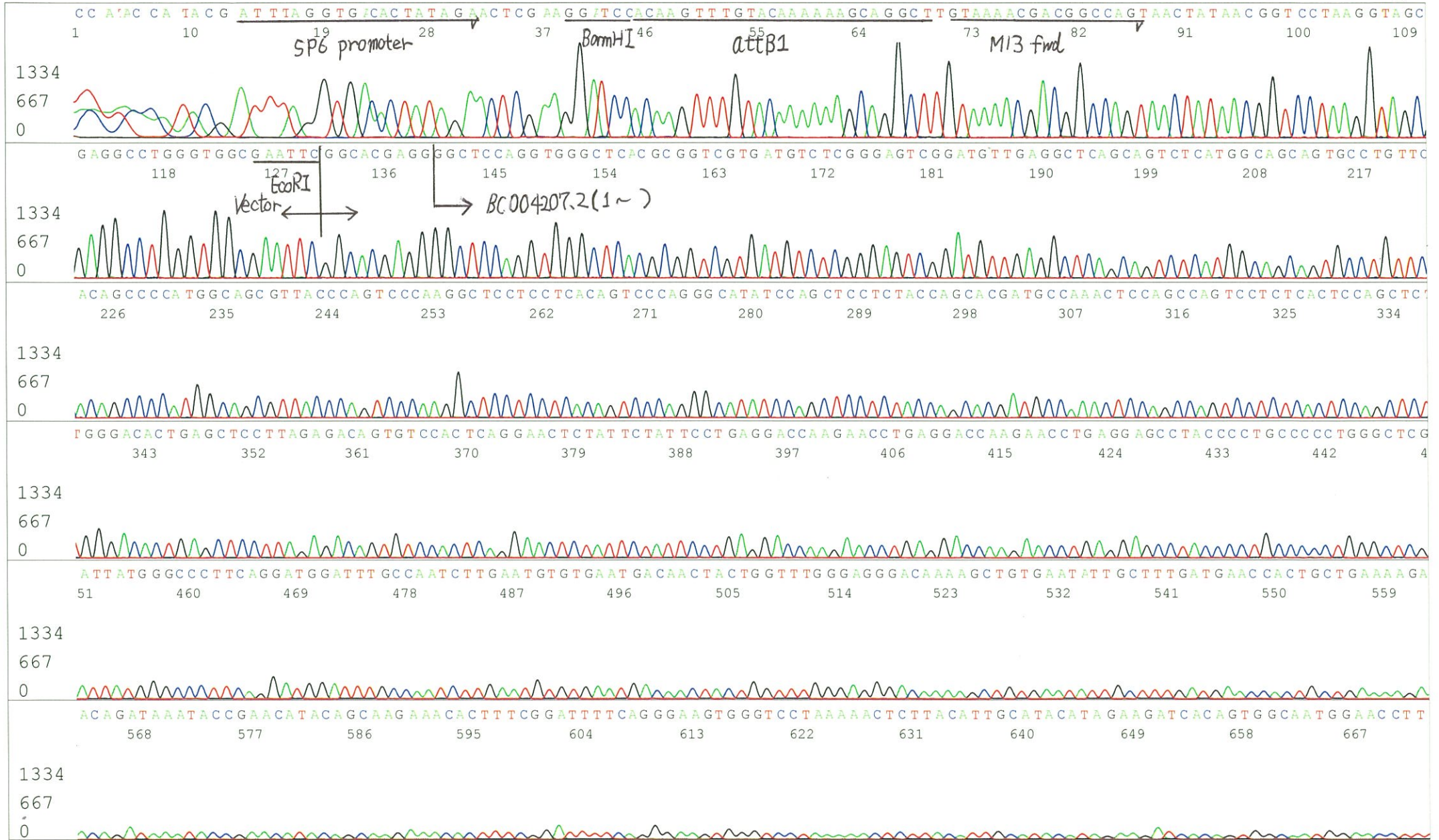
5' AACGCGGCTACAATTAATACATAACC 3'

Pts 1390 to 13038 Pk1 Loc:1367

Spacing:11.47 Pts/Panel1350

Version 6.0 HiSQV Bases: 1010

Plate Name: 20160408_mix



S/N G:443 A:254 T:237 C:294
KB.bcp
KB 1.4.1.8 Cap:2



S/N G:50 A:37 T:42 C:45

Primer B: pOTB7-R

IRAL011F17_A6D4_pOTB7_R

Apr 08,2016 11:50AM, JST

KB.bcp

KB_3500_POP7_BDTv3.mob

Apr 08,2016 12:17PM, JST

KB 1.4.1.8 Cap:5

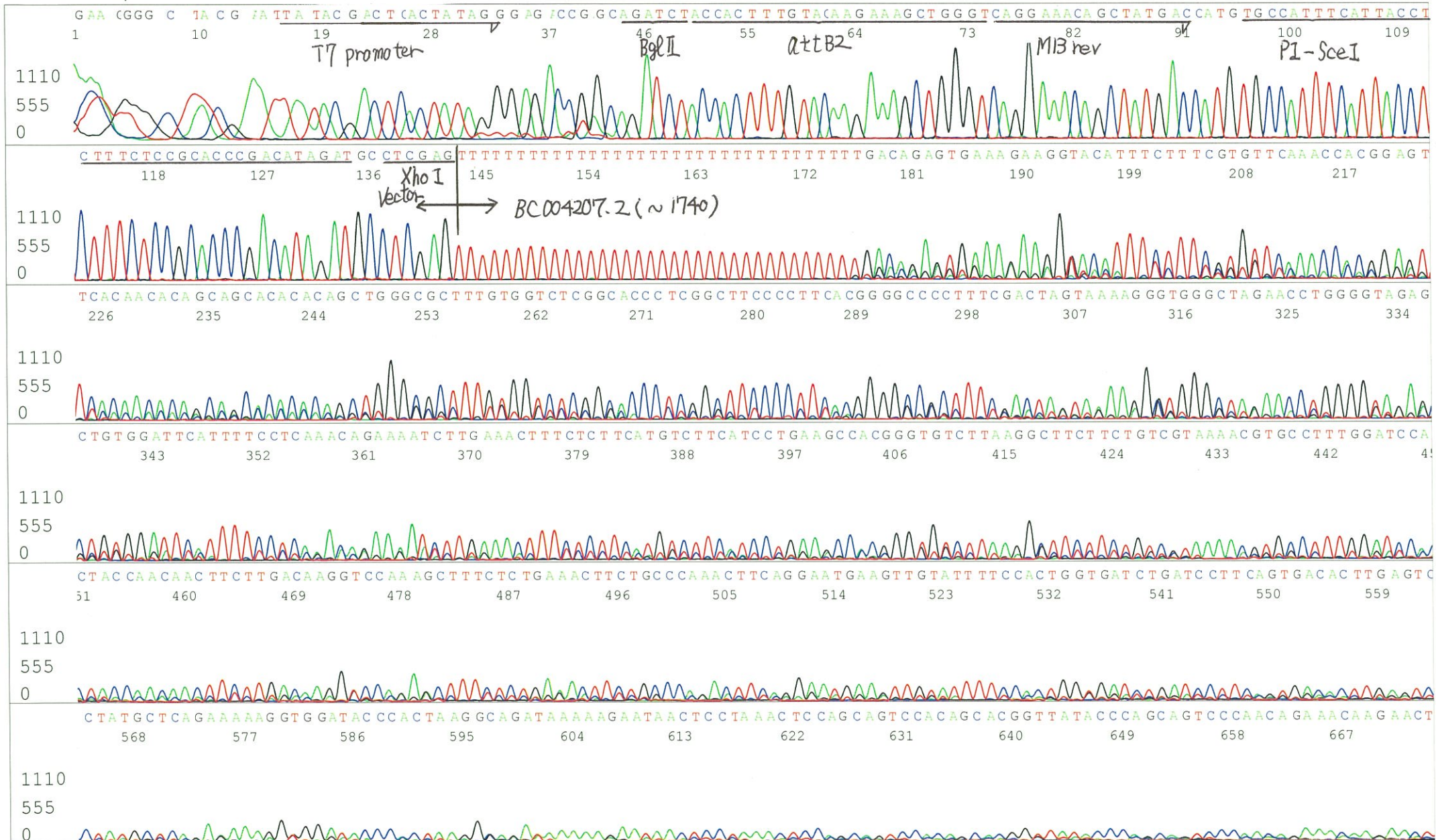
5' GTACTGCAGCCGATTTCATTAATGC 3'

Pts 1389 to 13003 Pk1 Loc:1366

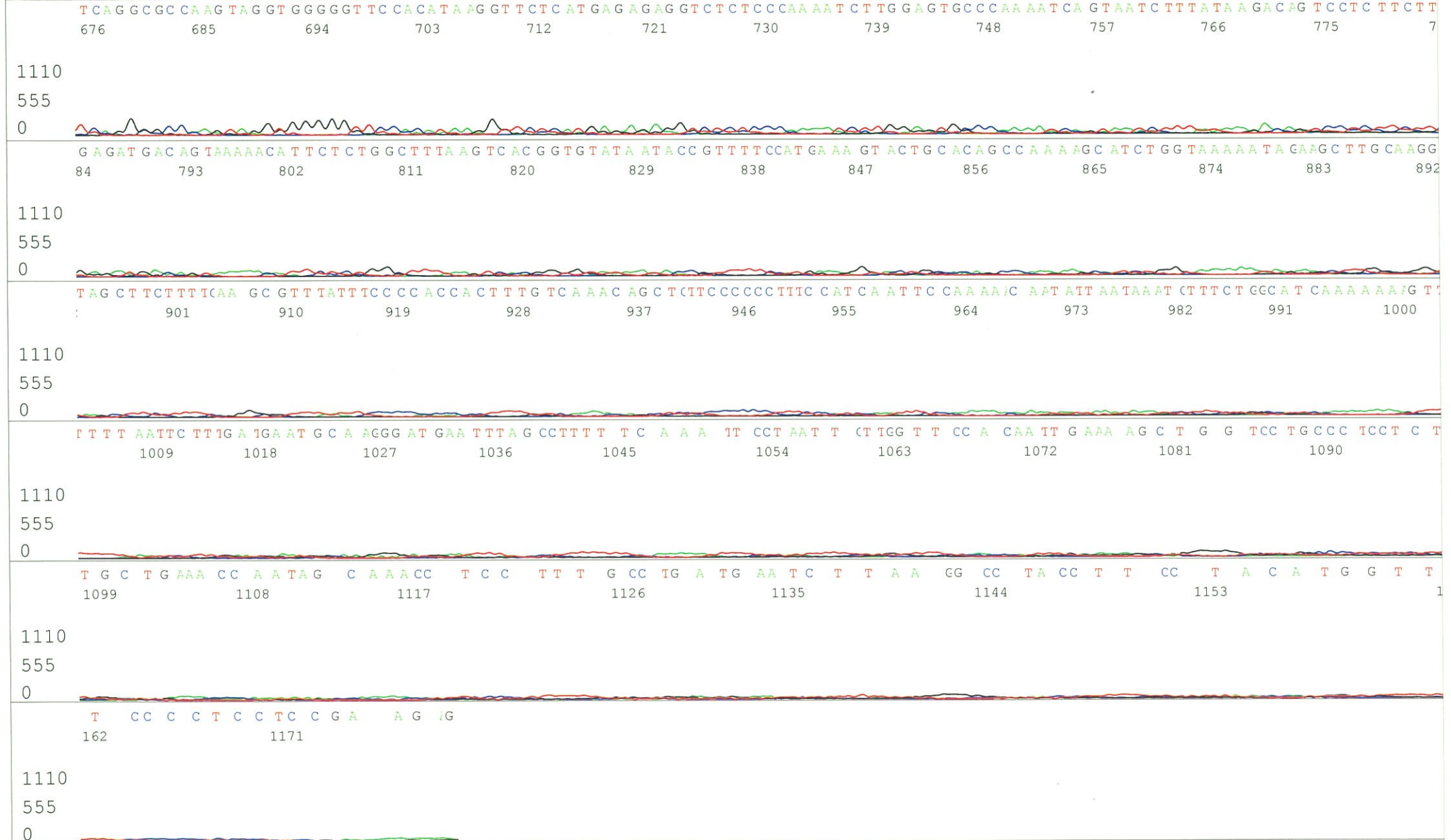
Spacing:11.48 Pts/Panel1350

Version 6.0 HiSQV Bases: 831

Plate Name: 20160408_mix



S/N G:50 A:37 T:42 C:45
KB.bcp
KB 1.4.1.8 Cap:5



S/N G:777 A:545 T:764 C:760

IRAL011F17_A6D4_GNP19

Apr 13,2016 09:41AM, JST

KB.bcp

KB_3500_POP7_BDTv3.mob

Apr 13,2016 10:07AM, JST

KB 1.4.1.8 Cap:12

Primer C : Poly(A) region primer #19

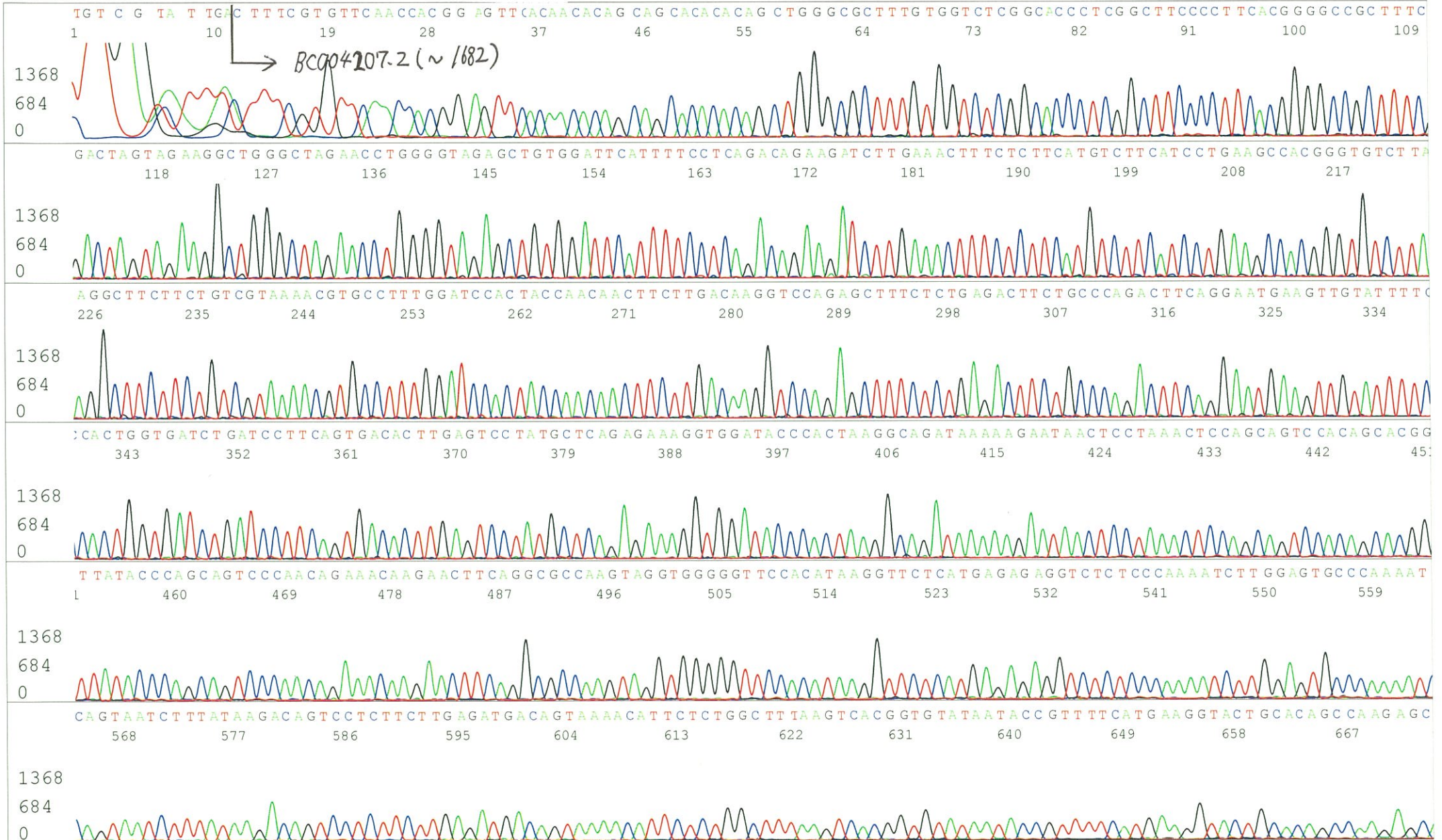
Pts 1442 to 12893 Pk1 Loc:1419

Spacing:11.61 Pts/Panel1350

5' TTTTTTTTTTTTTTTTTTTTTT GAC 3'

Version 6.0 HiSQV Bases: 1000

Plate Name: 20160412_mix



S/N G:777 A:545 T:764 C:760
KB.bcp
KB 1.4.1.8 Cap:12

