

RIKEN Clone ID : IRAL006K15

Lot#: 7566_B1Ka

Vector : pOTB7

Gene	DHFR	
Accession No.	BC000192.1	2851 bp
	<i>CDS</i>	564 bp

● Plasmid DNA purification

Date : 2021.11.11

Culture : LB (25 ug/ml Chloramphenicol) 5 ml -> at 37 deg C over night

Date : 2021.11.12

Purification : QIAGEN Miniprep kit -> dH₂O 100 ul

● Digestion by restriction enzyme/Concentration calibration

Date : 2021.11.12

DNA concentration (O.D.): 206 ng/ul

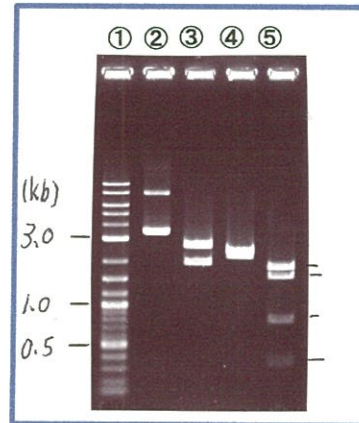
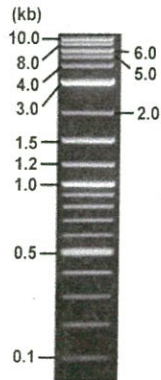
< Size of fragment expected from this clone >

DNA	0.5	ul
Enzyme (BamHI + BglIII)	0.5 + 0.5	ul
Buffer H	1	ul
dH ₂ O	7.5	ul
Total	10	ul

BamHI	2.7, 2.0 kb
BglIII	2.4, 2.3 kb
BamHI + BglIII	1.6kb (Vector) 1.9, 0.8, 0.4 kb

Erectrophoresis : 1% agarose gel, 1x TAE Buffer

Marker : 2-Log DNA Ladder (NEB#N3200L)



- ①:Marker
- ②:uncut
- ③:BamHI
- ④:BglIII
- ⑤:BamHI + BglIII

● Adjust plasmid DNA solution to 25 ng/ul

Date : 2021.11.15

DNA (206 ng/ul)	85.0	ul
10x TE	70.0	ul
dH ₂ O	545.4	ul
Total	700.4	ul

● Confirmation of the insertion sequence

Date : 2021.11.12

Primer A	pOTB7_F
Primer B	pOTB7_R
Primer C	-
List of Sequencing Primers	http://dna.brc.riken.jp/en/GNPclone3en.html

● Shipping

Conc. : 25 ng/ul, Volume : 40 ul

Conc. : ~~ng/ul~~, Volume : ~~ul~~

APPROVED BY :

<http://dna.brc.riken.jp/index.html>



S/N G:55 A:84 T:47 C:56

Primer A: pOTB7-F

7566_IRAL006K15_B1Ka_pOTB7_F

Nov 12,2021 02:52PM, JST

KB.bcp

KB_3500_POP7_BDTv3.mob

Gray line indicates quality value

Nov 12,2021 03:08PM, JST

KB 1.4.1.8 Cap:20

5' AACGCGGCTACAATTAATACATAACC 3'

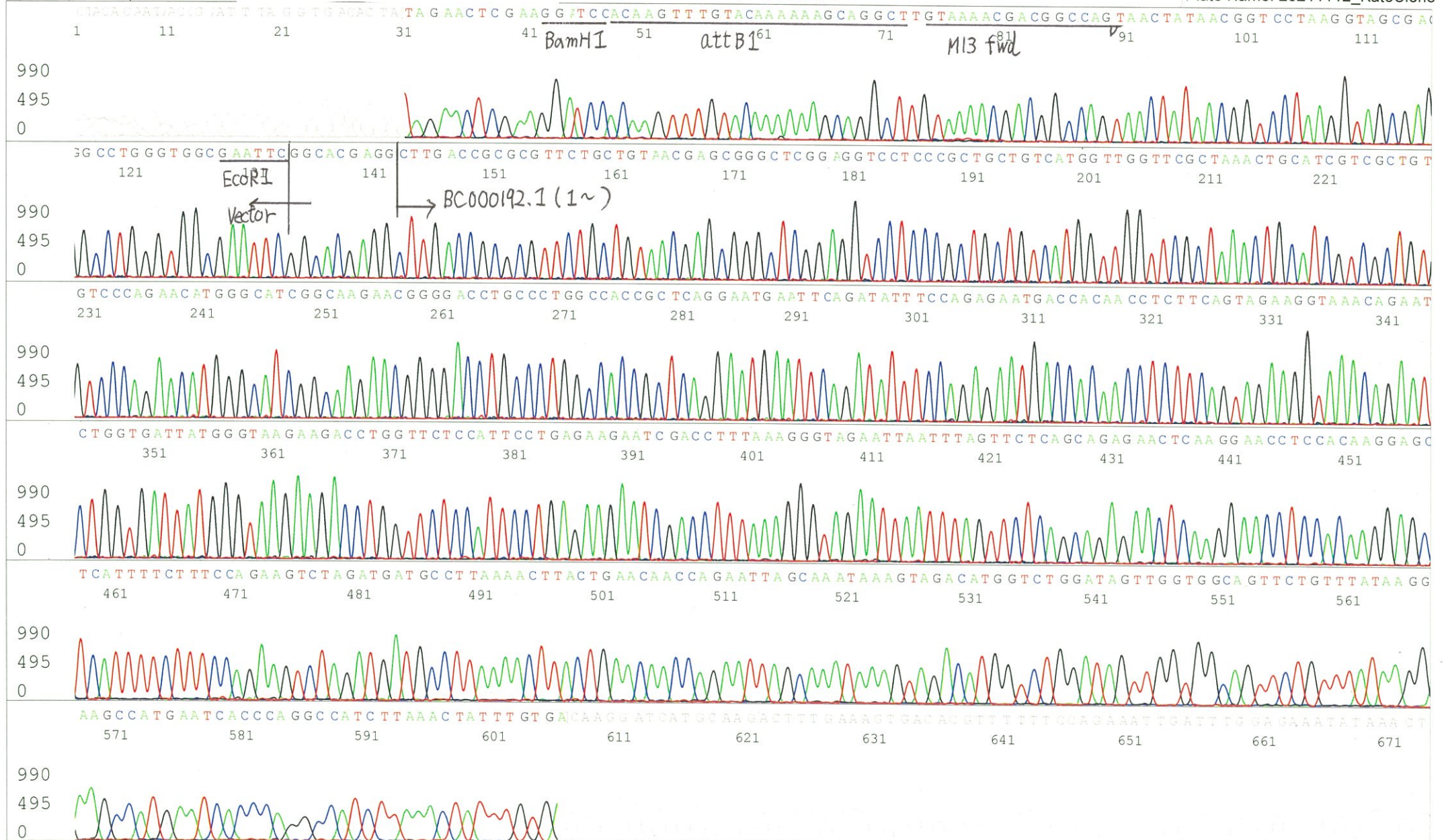
Pts 1727 to 8683 Pk1 Loc:1695

(QV) < 40.

Spacing:10.44 Pts/Panel1350

Version 6.0 HiSQV Bases: 678

Plate Name: 20211112_KatoClone



S/N G:42 A:74 T:55 C:62

Primer B: pOTB7-R

7566_IRAL006K15_B1Ka_pOTB7_R

Nov 12,2021 02:52PM, JST

KB.bcp

KB_3500_POP7_BDTv3.mob

Gray line indicates quality value

Nov 12,2021 03:08PM, JST

KB 1.4.1.8 Cap:23

5' GTACTGCAGCCGATTCATTAATGC 3'

Pts 1747 to 8706 Pk1 Loc:1715

Version 6.0 HiSQV Bases: 645 (QV) < 40.

Spacing:10.69 Pts/Panel1350

Plate Name: 20211112_KatoClone

