

RIKEN Clone ID : IRAL006H23

Lot#: 7566_B0H6

Vector : pOTB7

Gene	APOE	
Accession No.	BC003557.1	1186 bp
	CDS	954 bp

● Plasmid DNA purification

Date : 2020.08.06

Culture : LB (25 ug/ml Chloramphenicol) 5 ml -> at 37 deg C over night

Date : 2020.08.07

Purification : QIAGEN Miniprep kit -> dH₂O 100 ul

● Digestion by restriction enzyme/Concentration calibration

Date : 2020.08.07

DNA concentration (O.D.): 272 ng/ul

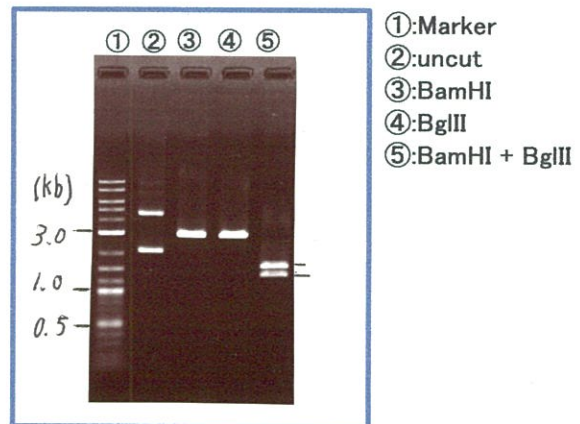
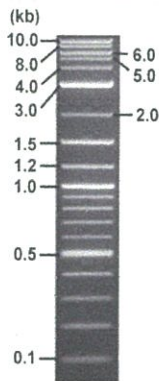
< Size of fragment expected from this clone >

DNA	0.4 ul
Enzyme (BamHI + BglII)	0.5 + 0.5 ul
Buffer H	1 ul
dH ₂ O	7.6 ul
Total	10 ul

BamHI	3.0 kb
BglII	3.0 kb
BamHI + BglII	1.6kb (Vector) 1.4 kb

Erectrophoresis : 1% agarose gel, 1x TAE Buffer

Marker : 2-Log DNA Ladder (NEB#N3200L)



● Adjust plasmid DNA solution to 25 ng/ul

Date : 2020.8.21

DNA (<u>272</u> ng/ul)	85.0 ul
10x TE	92.4 ul
dH ₂ O	747.4 ul
Total	924.8 ul

● Confirmation of the insertion sequence

Date : 2020.08.12

Primer A	pOTB7_F
Primer B	pOTB7_R
Primer C	poly(A) region primer #0
List of Sequencing Primers	http://dna.brc.riken.jp/en/GNPclone3en.html

● Shipping

Conc. : 25 ng/ul, Volume : 40 ul

Conc. : ng/ul, Volume : ul

APPROVED BY :

<http://dna.brc.riken.jp/index.html>



S/N G:128 A:103 T:64 C:137

Primer A: pOTB7-F

7566_IRAL006H23_B0H6_pOTB7_F

Aug 12,2020 11:08AM, JST

KB.bcp

KB_3500_POP7_BDTv3.mob

Gray line indicates quality value

Aug 12,2020 11:26AM, JST

KB 1.4.1.8 Cap:10

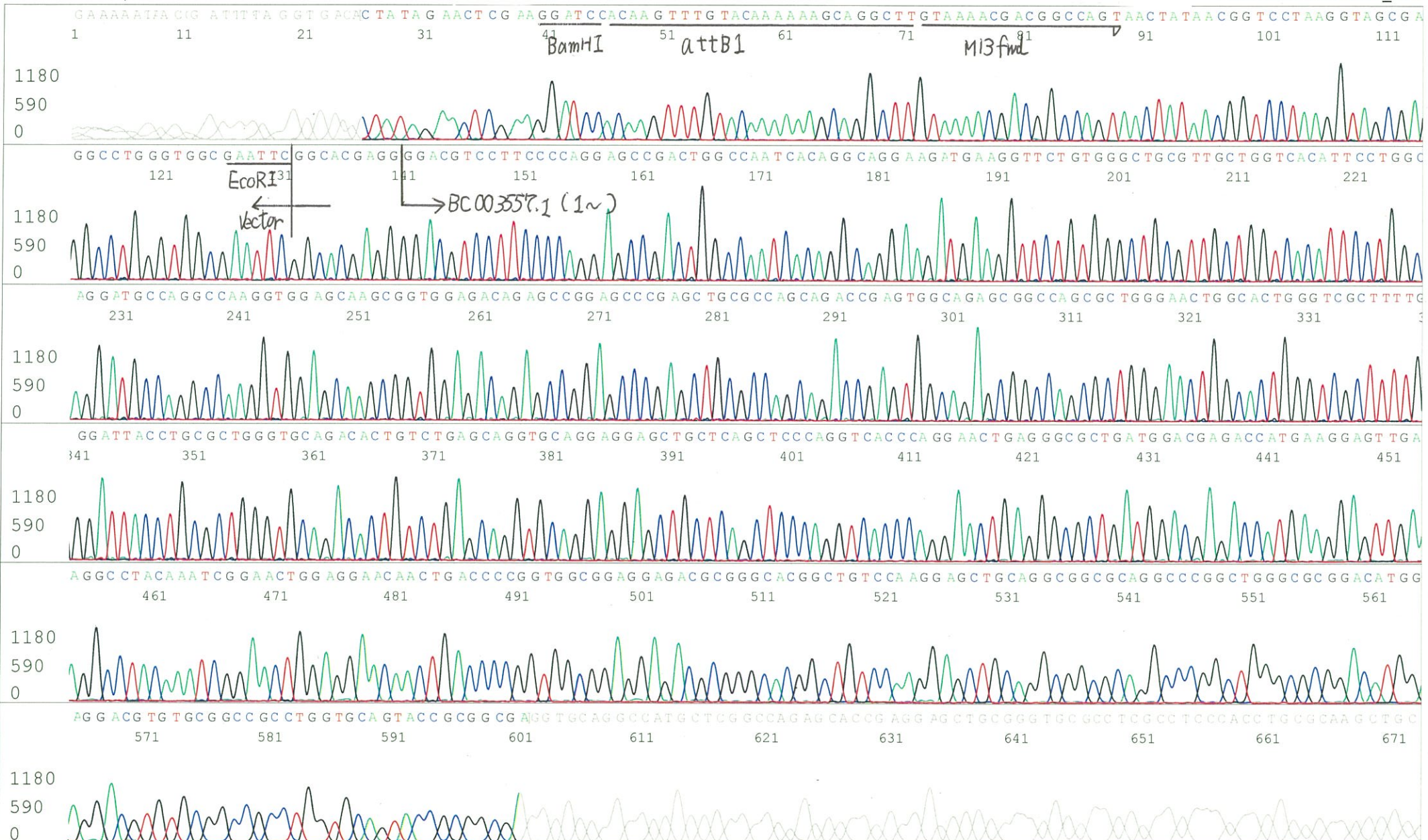
5' AACGCGGCTACAATTAATACATAACC 3'

Pts 1799 to 8705 Pk1 Loc:1767

(QV) < 40.

Spacing:10.83 Pts/Panel1350

Plate Name: 20200812_GNP



S/N G:87 A:51 T:66 C:99

Primer B: pOTB7-R

7566_IRAL006H23_B0H6_pOTB7_R

Aug 12,2020 11:08AM, JST

KB.bcp

KB_3500_POP7_BDTv3.mob

Gray line indicates quality value

Aug 12,2020 11:26AM, JST

KB 1.4.1.8 Cap:13

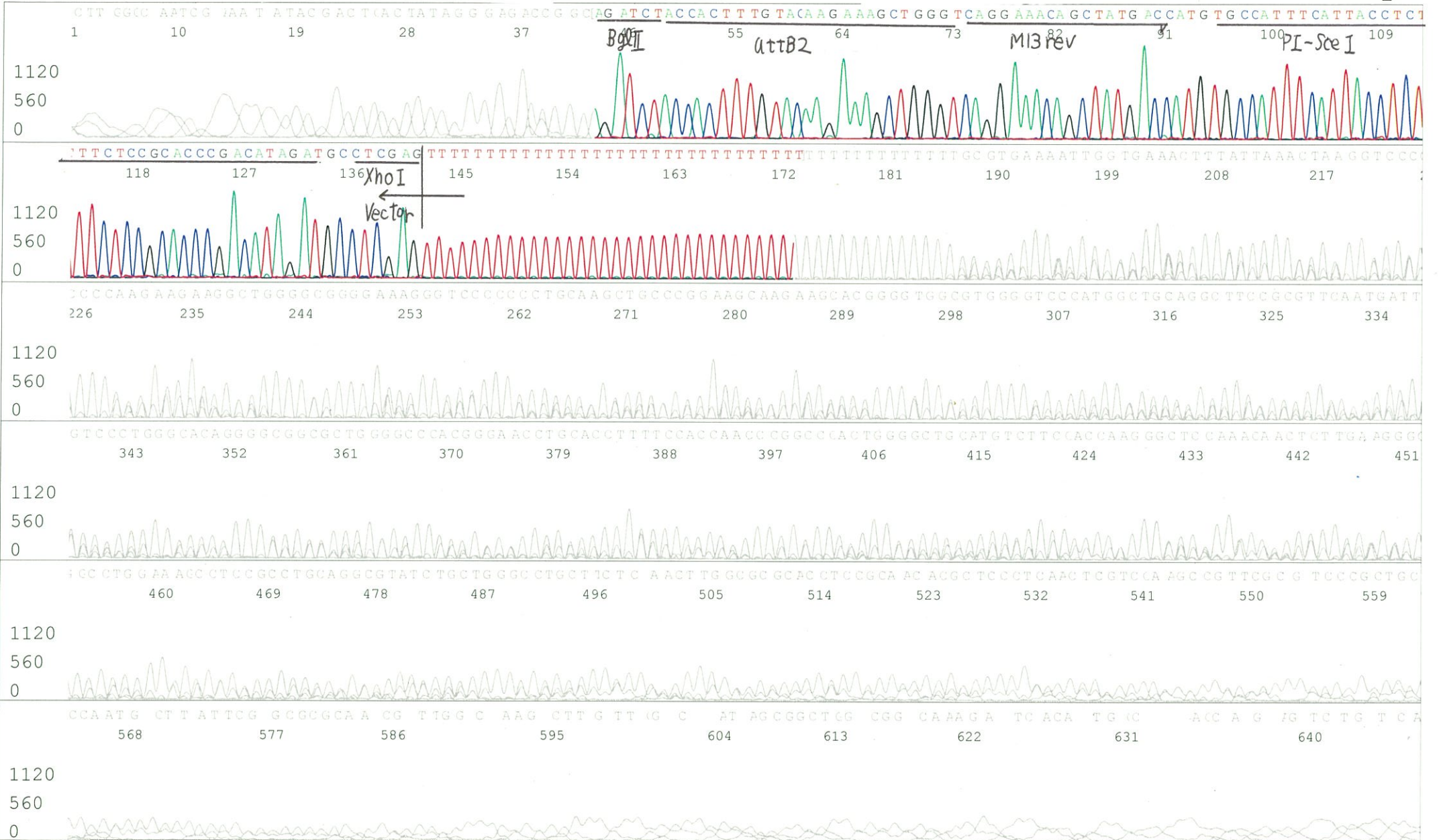
5' GTACTGCAGCCGATTCATTAATGC 3'

Pts 1784 to 8705 Pk1 Loc:1752

(QV) < 40.

Spacing:10.96 Pts/Panel1350

Plate Name: 20200812_GNP



S/N G:43 A:20 T:21 C:50

Primer C : Poly(A) region primer #0

7566_IRAL006H23_B0H6_GNPmixture

KB_3500_POP7_BDTv3.mob

Gray line indicates quality value

Aug 12,2020 11:08AM, JST

KB.bcp

Pts 1793 to 8705 Pk1 Loc:1761

Aug 12,2020 11:26AM, JST

KB 1.4.1.8 Cap:16

5' TTTTTTTTTTTTTTTTTTTTTTNNN 3'

Version 6.0 HiSQV Bases: 667

(QV) < 40.

Spacing:10.82 Pts/Panel1350

Plate Name: 20200812_GNP

