

RIKEN Clone ID : IRAL006F12

Lot#: 7566_B2Cv

Vector : pOTB7

Gene	CYBA	
Accession No.	BC006465.1	734 bp
	CDS	588 bp

● Plasmid DNA purification

Date : 22.03.31

Culture : LB (25 ug/ml Chloramphenicol) 5 ml -> at 37 deg C over night

Date : 22.04.01

Purification : QIAGEN Miniprep kit -> dH₂O 100 ul

● Digestion by restriction enzyme/Concentration calibration

Date : 22.04.01

DNA concentration (O.D.): 208 ng/ul

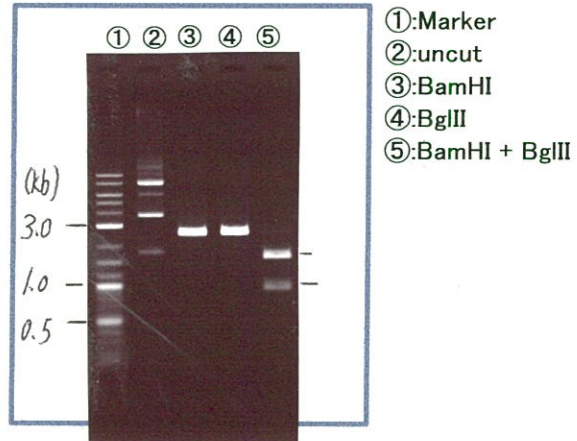
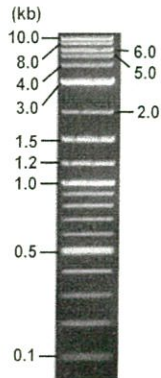
< Size of fragment expected from this clone >

DNA	0.5	ul
Enzyme (BamHI + BglII)	0.5 + 0.5	ul
Buffer H		1 ul
dH ₂ O	7.5	ul
Total		10 ul

BamHI	2.5 kb	
BglII	2.5 kb	
BamHI + BglII	1.6kb (Vector)	0.9 kb

Electrophoresis : 1% agarose gel, 1x TAE Buffer

Marker : 2-Log DNA Ladder (NEB#N3200L)



● Adjust plasmid DNA solution to 25 ng/ul

Date : 22.04.07

DNA (208 ng/ul)	86.0	ul
10x TE	71.5	ul
dH ₂ O	558.0	ul
Total	715.5	ul

● Confirmation of the insertion sequence

Date : 22.04.05

Primer A	pOTB7_F
Primer B	pOTB7_R
Primer C	poly(A) region primer #0
List of Sequencing Primers	http://dna.brc.riken.jp/en/GNPclone3en.html

● Shipping

Conc. : 25 ng/ul, Volume : 40 ul

Conc. : _____ ng/ul, Volume : _____ ul

APPROVED BY :

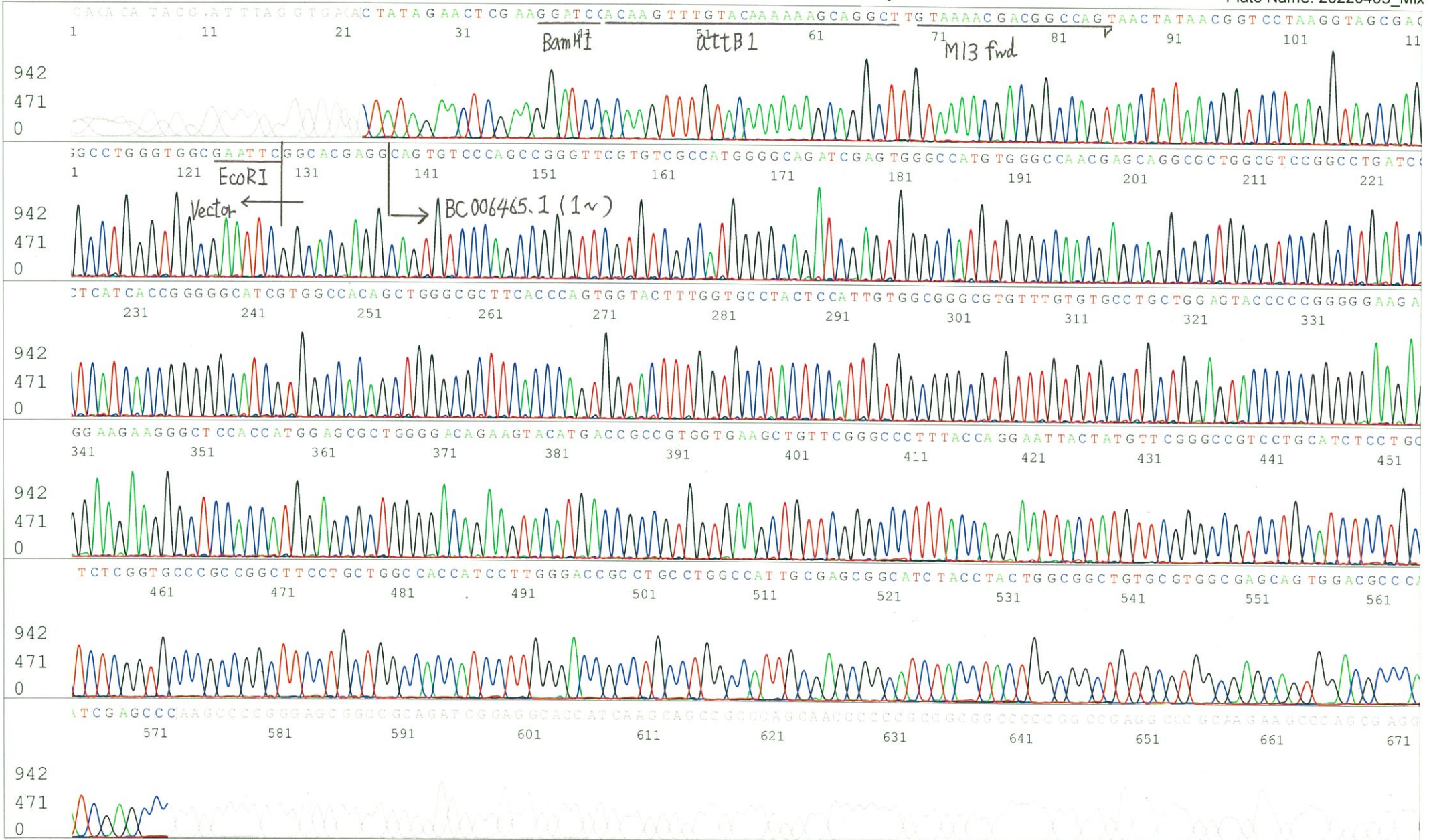
<http://dna.brc.riken.jp/index.html>



S/N G:1683 A:1429 T:951 C:22 Primer A: pOTB7-F
KB.bcp
KB 1.4.1.8 Cap:10

5' AACGCGGCTACAATTAATACATAACC 3'

Gray line indicates quality value
(QV) < 40.



S/N G:685 A:644 T:584 C:1002 Primer B: pOTB7-R

7566_IRAL006F12_B2Cv_pOTB7_R

Apr 05,2022 09:43AM, JST

KB.bcp

KB_3500_POP7_BDTv3.mob

Apr 05,2022 09:58AM, JST

KB 1.4.1.8 Cap:13

5' GTACTGCAGCCGATTCATTAATGC 3'

Pts 1766 to 8707 Pk1 Loc:1734

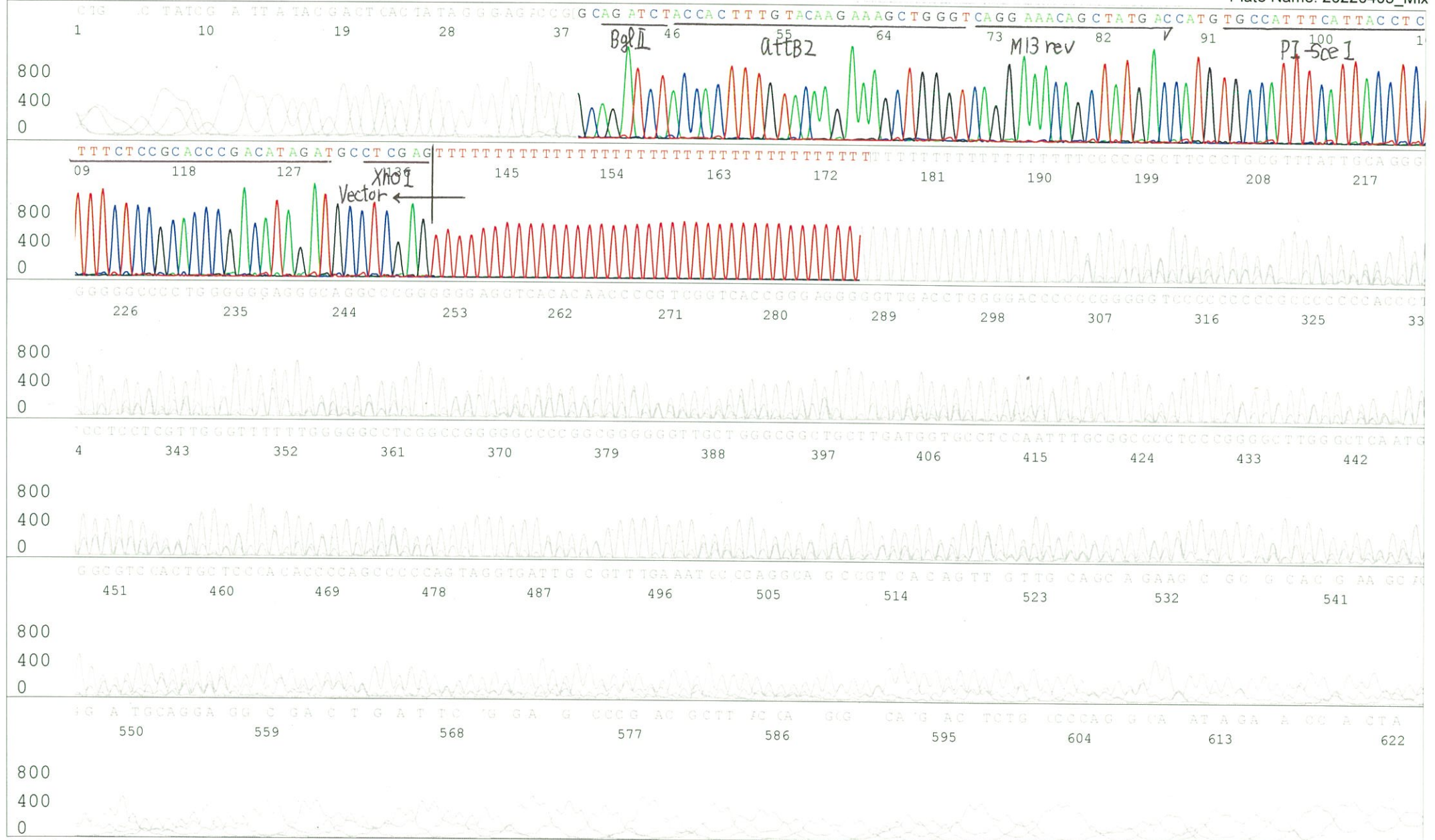
Gray line indicates quality value

Spacing:11.09 Pts/Panel1350

Version 6.0 HiSQV Bases: 172

(QV) < 40.

Plate Name: 20220405_Mix



S/N G:201 A:155 T:91 C:263

7566_IRAL006F12_B2Cv_GNP Mixture

Apr 05,2022 09:43AM, JST

KB.bcp

KB_3500_POP7_BDTv3.mob

Apr 05,2022 09:58AM, JST

KB 1.4.1.8 Cap:16

Primer C : Poly(A) region primer #0
5' TTTTTTTTTTTTTTTTTTTTTTVNN 3'

Pts 1747 to 8707 Pk1 Loc:1715

Gray line indicates quality value

Spacing:10.86 Pts/Panel1350

Version 6.0 HiSQV Bases: 634

(QV) < 40.

Plate Name: 20220405_Mix

