

RIKEN Clone ID : IRAL005F18

Lot#: 7566_A7H3

Vector : pOTB7

Gene	GLDN4	
Accession No.	BC000671.2	1703 bp
	CDS	630 bp

● Plasmid DNA purification

Date : 170807

Culture : LB (25 ug/ml Chloramphenicol) 5 ml → at 37 deg C over night

Date : 170808

Purification : QIAGEN Miniprep kit → dH₂O 100 ul

● Digestion by restriction enzyme/Concentration calibration

Date : 170808

DNA concentration (O.D.): 149 ng/ul

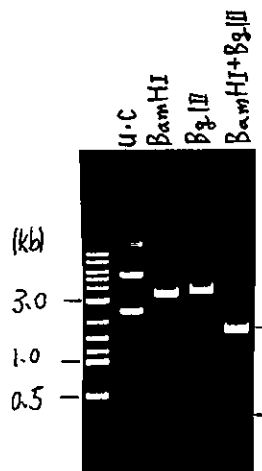
< Size of fragment expected from this clone >

DNA	0.6	ul
Enzyme (BamHI + BglII)	0.5 + 0.5	ul
Buffer H	1	ul
dH ₂ O	7.4	ul
Total	10	ul

BamHI	3.2 , 0.2	kb
BglII	3.4	kb
BamHI + BglII	1.6kb (Vector)	1.6, 0.2

Erectrophoresis : 1% agarose gel, 1x TAE Buffer

Marker : 2-Log DNA Ladder (NEB#N3200L)



● Adjust plasmid DNA solution to 25 ng/ul

Date : 170821

● Confirmation of the insertion sequence

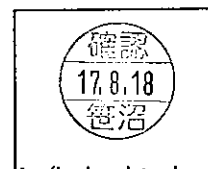
Date : 170817

DNA (149 ng/ul)	82.0	ul
10x TE	48.8	ul
dH ₂ O	357.9	ul
Total	488.7	ul

Primer A	pOTB7_F
Primer B	pOTB7_R
Primer C	-
List of Sequencing Primers	http://dna.brc.riken.jp/en/GNPclone3en.html

● Shipping

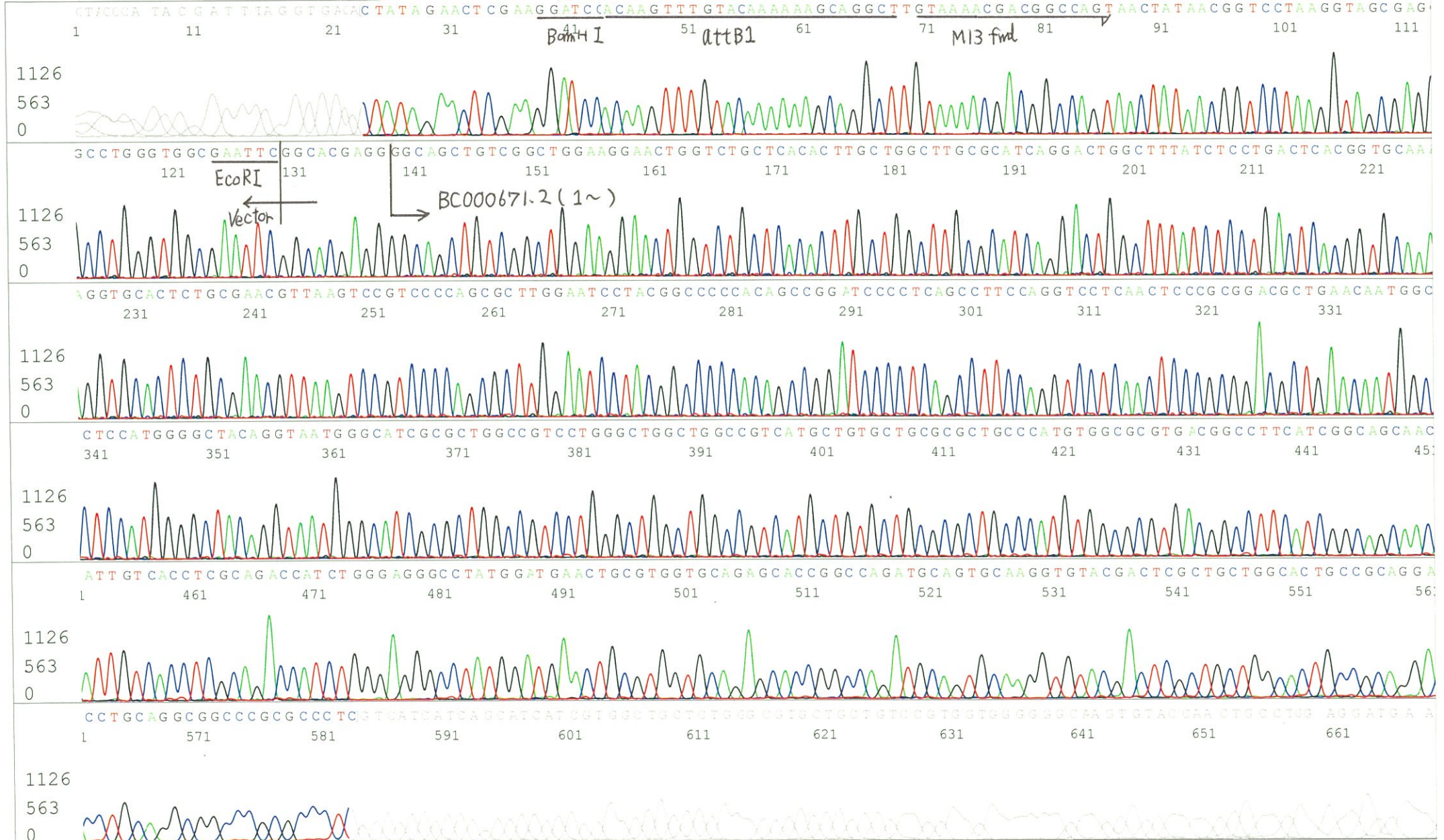
Conc. : 25 ng/ul, Volume : 40 ul
 Conc. : ng/ul, Volume : ul



APPROVED BY : <http://dna.brc.riken.jp/index.html>

S/N G:150 A:100 T:120 C:189 Primer A: pOTB7-F
KB.bcp
KB 1.4.1.8 Cap:5
5' AACGCGGCTACAATTAATACATAACC 3'

Gray line indicates quality value



S/N G:67 A:85 T:74 C:103
KB.bcp
KB 1.4.1.8 Cap:6

Primer B: pOTB7-R
5' GTACTGCAGCCGATTCATTAATGC 3'

IRAL005F18_A7H3_pOTB7_R
KB_3500_POP7_BDTv3.mob
Pts 1675 to 8567 Pk1 Loc:1643
Version 6.0 HiSQV Bases: 656

Gray line indicates quality value
(QV) < 40.

Aug 17,2017 09:32PM, JST
Aug 17,2017 09:47PM, JST
Spacing:10.44 Pts/Panel1350
ate Name: 20170817_MGE_GNP

