

RIKEN Clone ID : IRAL005F10

Lot#: 7566_A6H5

Vector : pOTB7

Gene	DHX32	
Accession No.	BC002473.2	2673 bp
	CDS	2232 bp

● Plasmid DNA purification

Date : 160809

Culture : LB (25 ug/ml Chloramphenicol) 5 ml -> at 37 deg C over night

Date : 160810

Purification : QIAGEN Miniprep kit -> dH₂O 100 ul

● Digestion by restriction enzyme/Concentration calibration

Date : 160810

DNA concentration (O.D.): 139 ng/ul

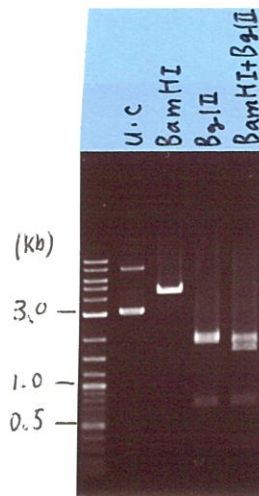
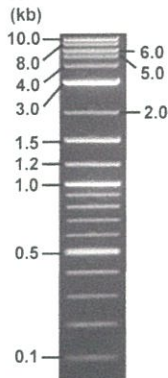
< Size of fragment expected from this clone >

DNA	0.7	ul
Enzyme (BamHI + BglII)	0.5 + 0.5	ul
Buffer H	1	ul
dH ₂ O	7.3	ul
Total	10	ul

BamHI	6.0	kb
BglII	1.9, 1.8, 0.72	kb
BamHI + BglII	1.6kb (Vector)	1.8, 0.72, 0.30 kb

Electrophoresis : 1% agarose gel, 1x TAE Buffer

Marker : 2-Log DNA Ladder (NEB#N3200L)



● Adjust plasmid DNA solution to 25 ng/ul

Date : 160819

DNA (<u>139</u> ng/ul)	<u>78.0</u>	ul
10x TE	<u>43.4</u>	ul
dH ₂ O	<u>312.3</u>	ul
Total	<u>433.7</u>	ul

● Confirmation of the insertion sequence

Date : 160819

Primer A	pOTB7_F
Primer B	pOTB7_R
Primer C	poly(A) region primer #0
List of Sequencing Primers	http://dna.brc.riken.jp/en/GNPclone3en.html

● Shipping

Conc. : 25 ng/ul, Volume : 40 ul

Conc. : ng/ul, Volume : ul

APPROVED BY :

<http://dna.brc.riken.jp/index.html>



S/N G:654 A:917 T:650 C:663

Primer A: pOTB7-F

IRAL005F10_A6H5_pOTB7_F

Aug 17,2016 02:53PM, JST

KB.bcp

KB_3500_POP7_BDTv3.mob

Aug 17,2016 03:19PM, JST

KB 1.4.1.8 Cap:21

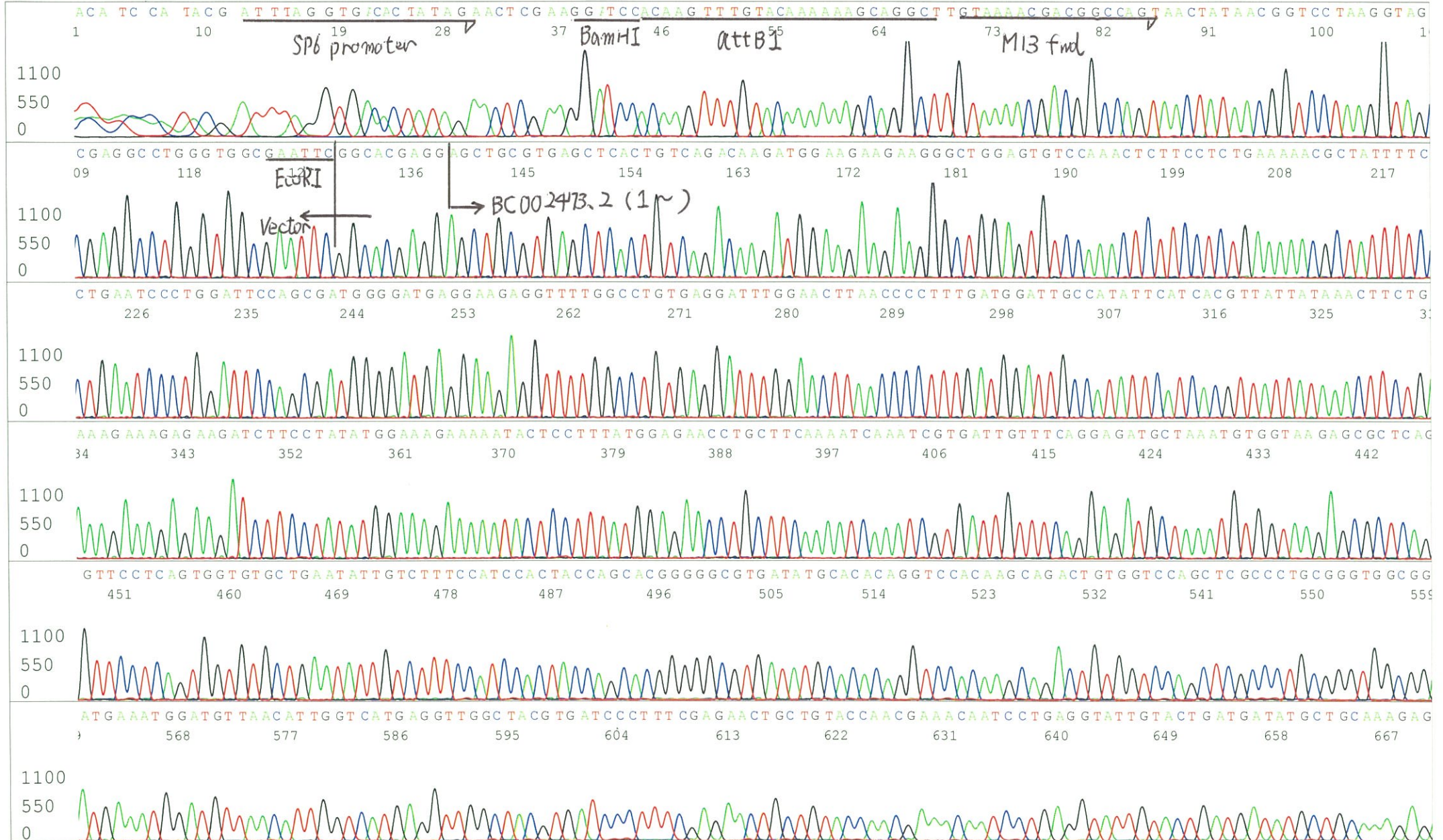
5' AACGCGGCTACAATTAATACATAACC 3'

Pts 1374 to 12680 Pk1 Loc:1351

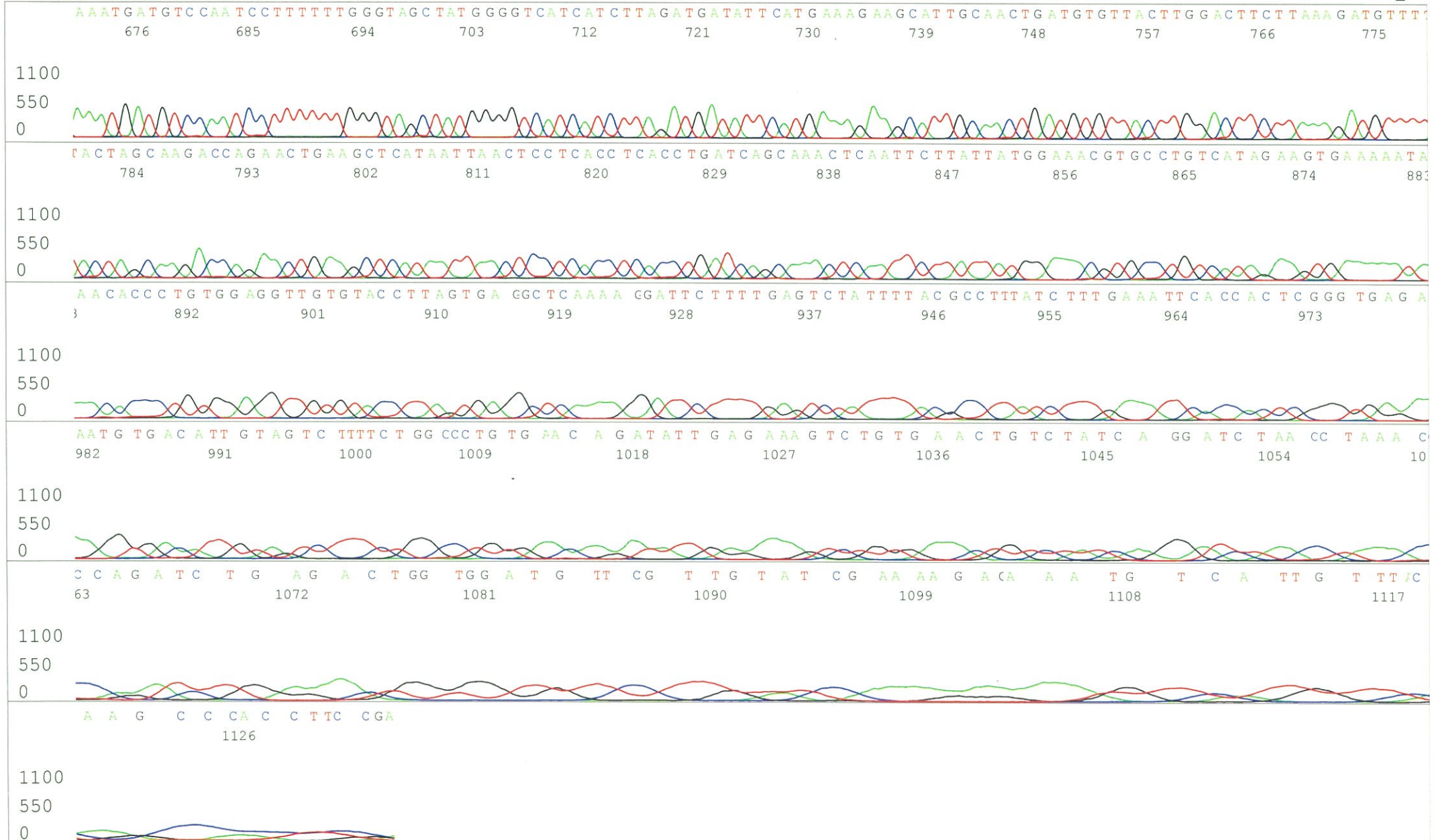
Spacing:11.24 Pts/Panel1350

Version 6.0 HiSQV Bases: 966

Plate Name: 20160817_mix

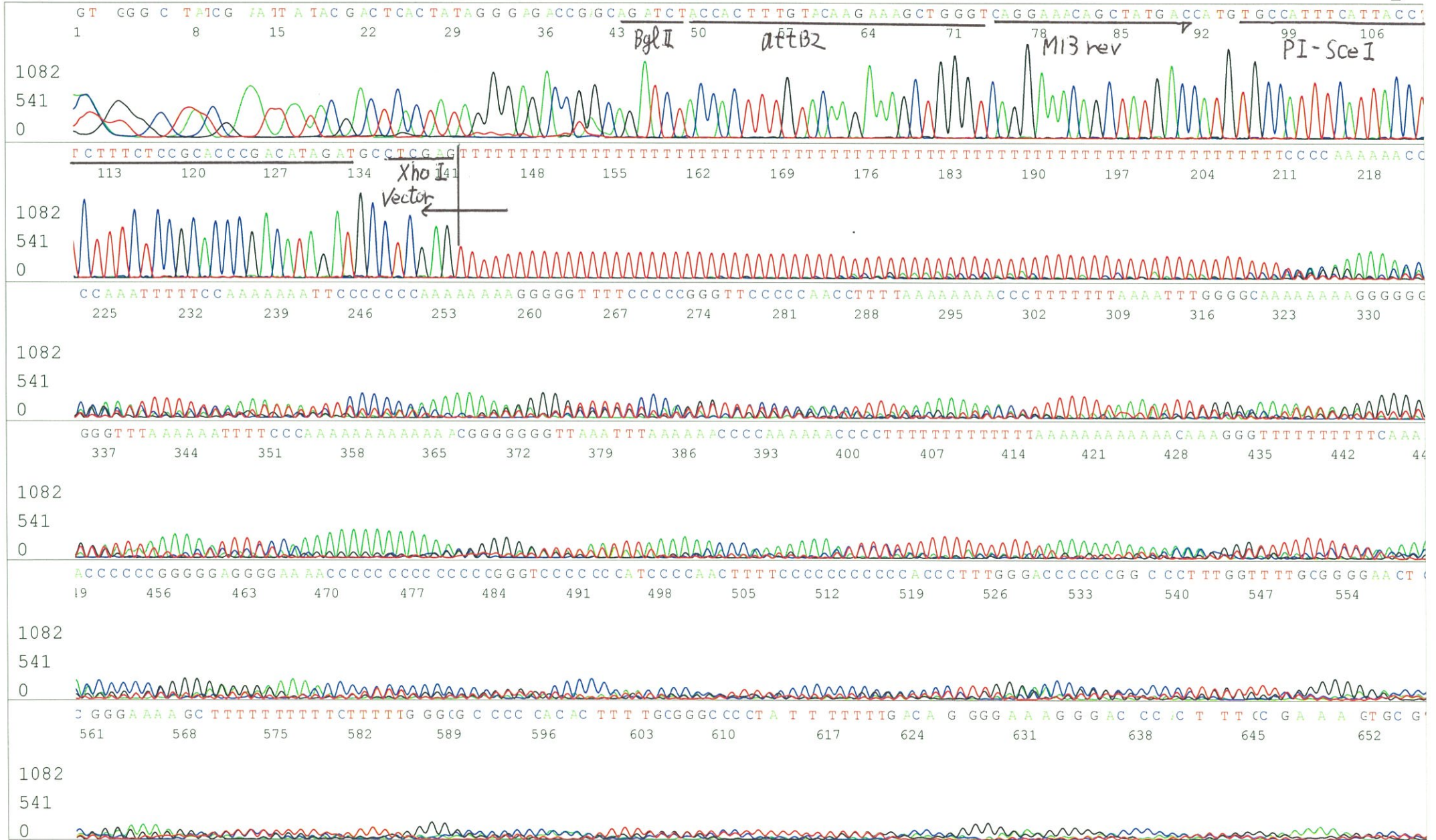


S/N G:654 A:917 T:650 C:663
KB.bcp
KB 1.4.1.8 Cap:21

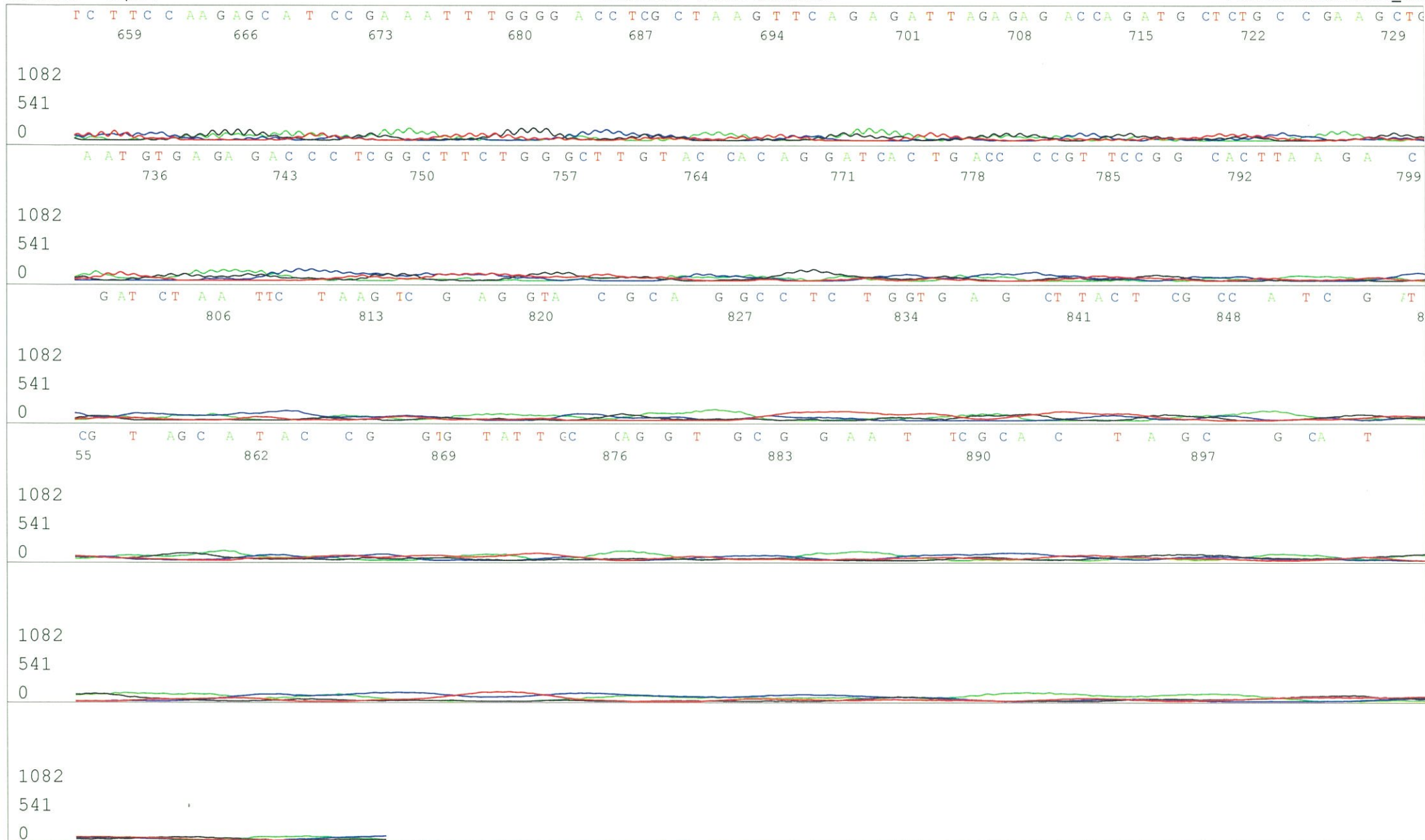


S/N G:206 A:254 T:357 C:280
KB.bcp
KB 1.4.1.8 Cap:24

Primer B: pOTB7-R
5' GTACTGCAGCCGATTCATTAATGC 3'



S/N G:206 A:254 T:357 C:280
KB.bcp
KB 1.4.1.8 Cap:24



S/N G:141 A:139 T:192 C:165
KB.bcp
KB 1.4.1.8 Cap:4

Primer C : Poly(A) region primer #0

IRAL005F10_A6H5_GNPmixture

KB_3500_POP7_BDTv3.mob
Pts 1417 to 12735 Pk1 Loc:1394

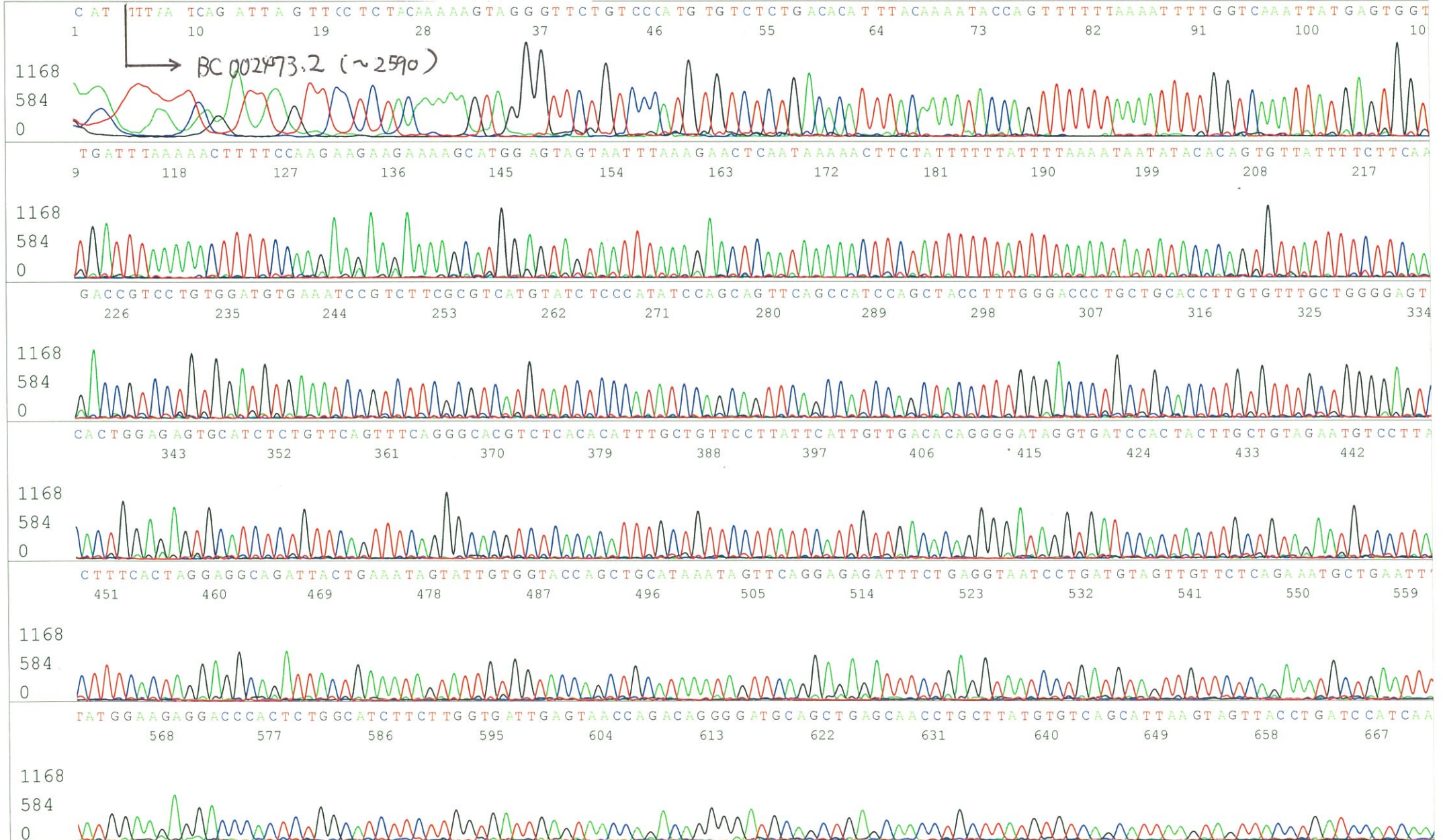
Version 6.0 HiSQV Bases: 981

Aug 19,2016 02:27PM, JST

Aug 19,2016 02:53PM, JST

Spacing:11.28 Pts/Panel1350

Plate Name: 20160819_GNP



S/N G:141 A:139 T:192 C:165
KB.bcp
KB 1.4.1.8 Cap:4

