

RIKEN Clone ID : IRAL005B21

Lot#: 7566_A3K5

Vector : pOTB7

Gene	GRB2	
Accession No.	BC000631.2	1347 bp
		1..1347
CDS	654 bp	303..956

● Plasmid DNA purification

Date : 131105

Culture : LB (25 ug/ml Chloramphenicol) 5 ml -> at 37 deg C over night

Date : 131107

Purification : QIAGEN Miniprep kit -> dH₂O 100 ul

● Digestion by restriction enzyme/Concentration calibration

Date : 131107

DNA concentration (O.D.): 240 ng/ul

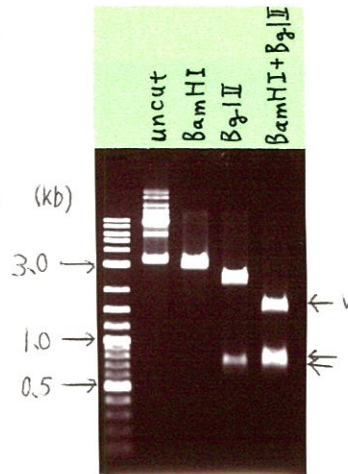
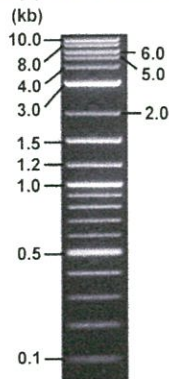
< Size of fragment expected from IRAL005B21 >

DNA	0.2	ul
Enzyme (BamHI + BglII)	0.5 + 0.5	ul
Buffer H	1	ul
dH ₂ O	7.8	ul
Total	10	ul

BamHI	3148 bp
BglII	2415, 733 bp
BamHI + BglII	1615bp (Vector) 800, 733 bp

Electrophoresis : 1% agarose gel, 1x TAE Buffer

Marker : 2-Log DNA Ladder (NEB#N3200L)



● Confirmation of the insertion sequence

Date : 131107

Primer A	pOTB7_F
Primer B	pOTB7_R
Primer C	poly(A) region primer #0
List of Sequencing Primers	http://dna.brc.riken.jp/en/GNPclone3en.html

● Adjustment of DNA concentration

Shipping amount : 40 ul

Concentration at the time of preparation of plasmid DNA : 25 ng/ul

Date : 131111

DNA (240 ng/ul)	85.0	ul
10x TE	81.6	ul
dH ₂ O	649.4	ul
Total	816.0	ul



APPROVED BY :

<http://dna.brc.riken.jp/index.html>

S/N G:750 A:617 T:394 C:399

KB.bcp

KB 1.4.1.8 Cap:17

Primer A: pOTB7-F

5' AACGCGGCTACAATTAATACATAACC 3'

IRAL005B21_A3K5_pOTB7_F

KB_3500_POP7_BDTv3.mob

Pts 1832 to 13157 Pk1 Loc:1809

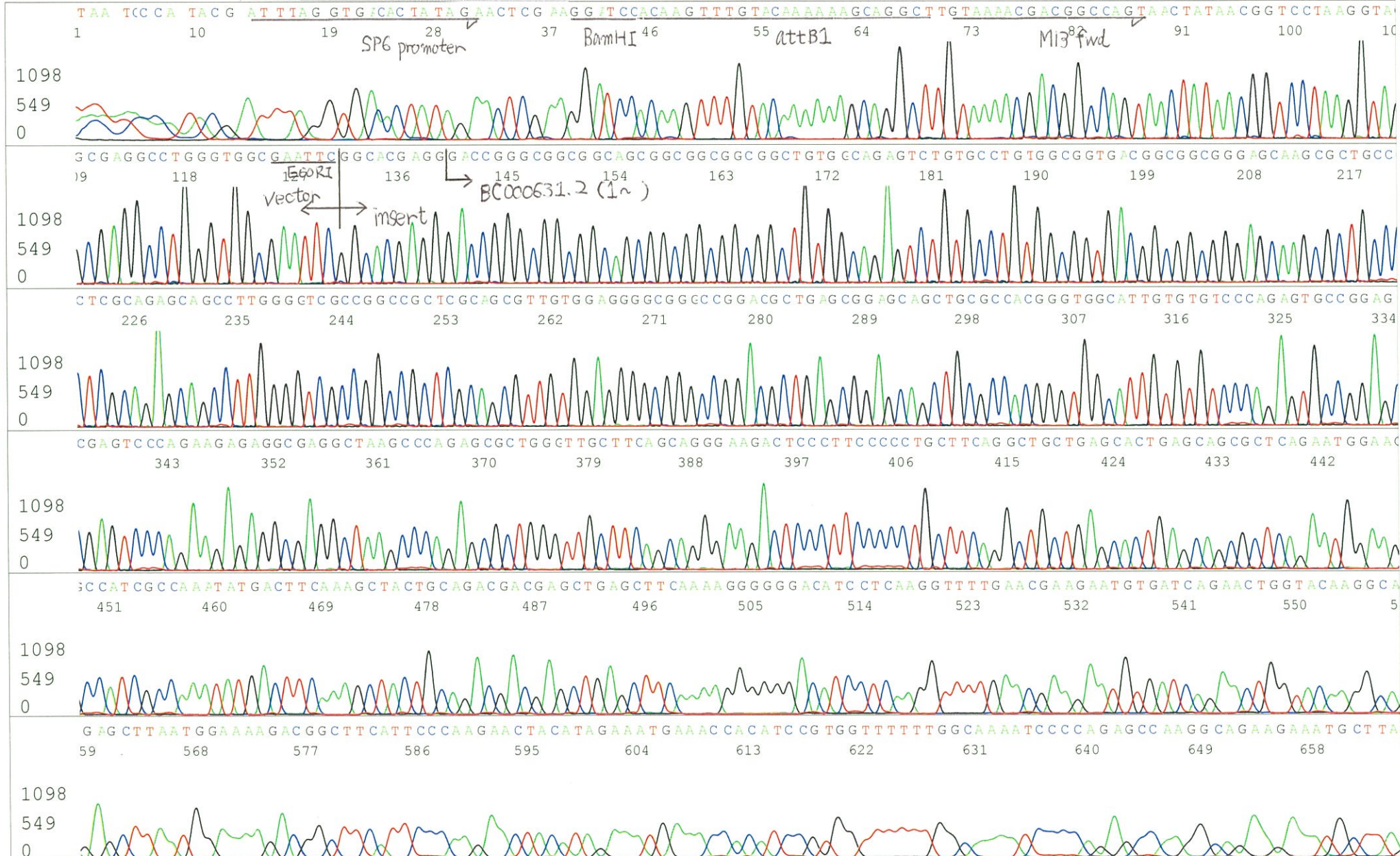
Version 5.4 HiSQV Bases: 809

Nov 07,2013 03:06PM, JST

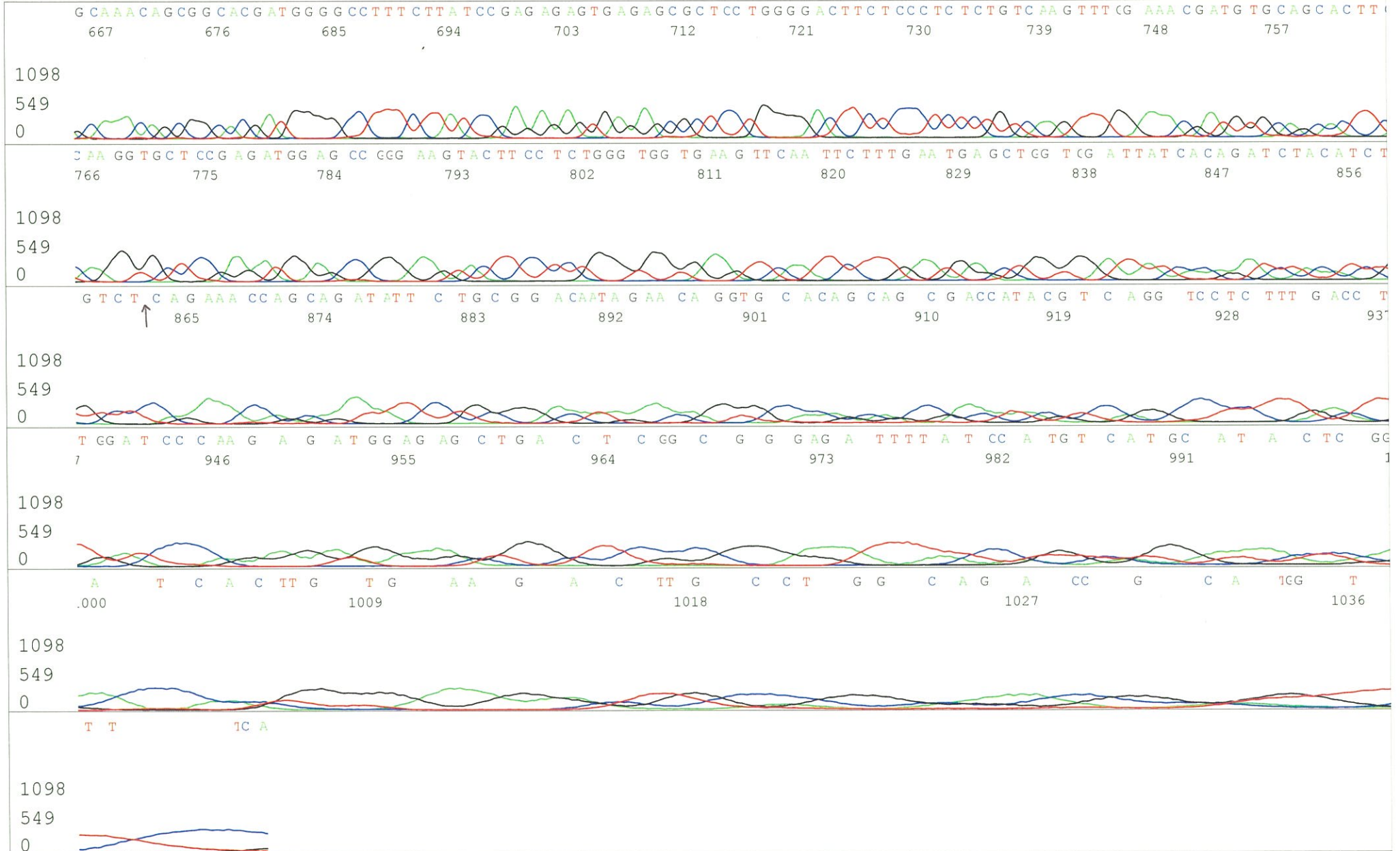
Nov 07,2013 03:46PM, JST

Spacing:11.6 Pts/Panel1350

Plate Name: 20131107_mix



S/N G:750 A:617 T:394 C:399
KB.bcp
KB 1.4.1.8 Cap:17



S/N G:610 A:523 T:558 C:364

KB.bcp

KB 1.4.1.8 Cap:20

Primer B: pOTB7-R

5' G T A C T G C A G C C C G A T T C A T T A A T T G C 3'

IRAL005B21_A3K5_pOTB7_R

KB_3500_POP7_BDTv3.mob

Pts 1581 to 13197 Pk1 Loc:1558

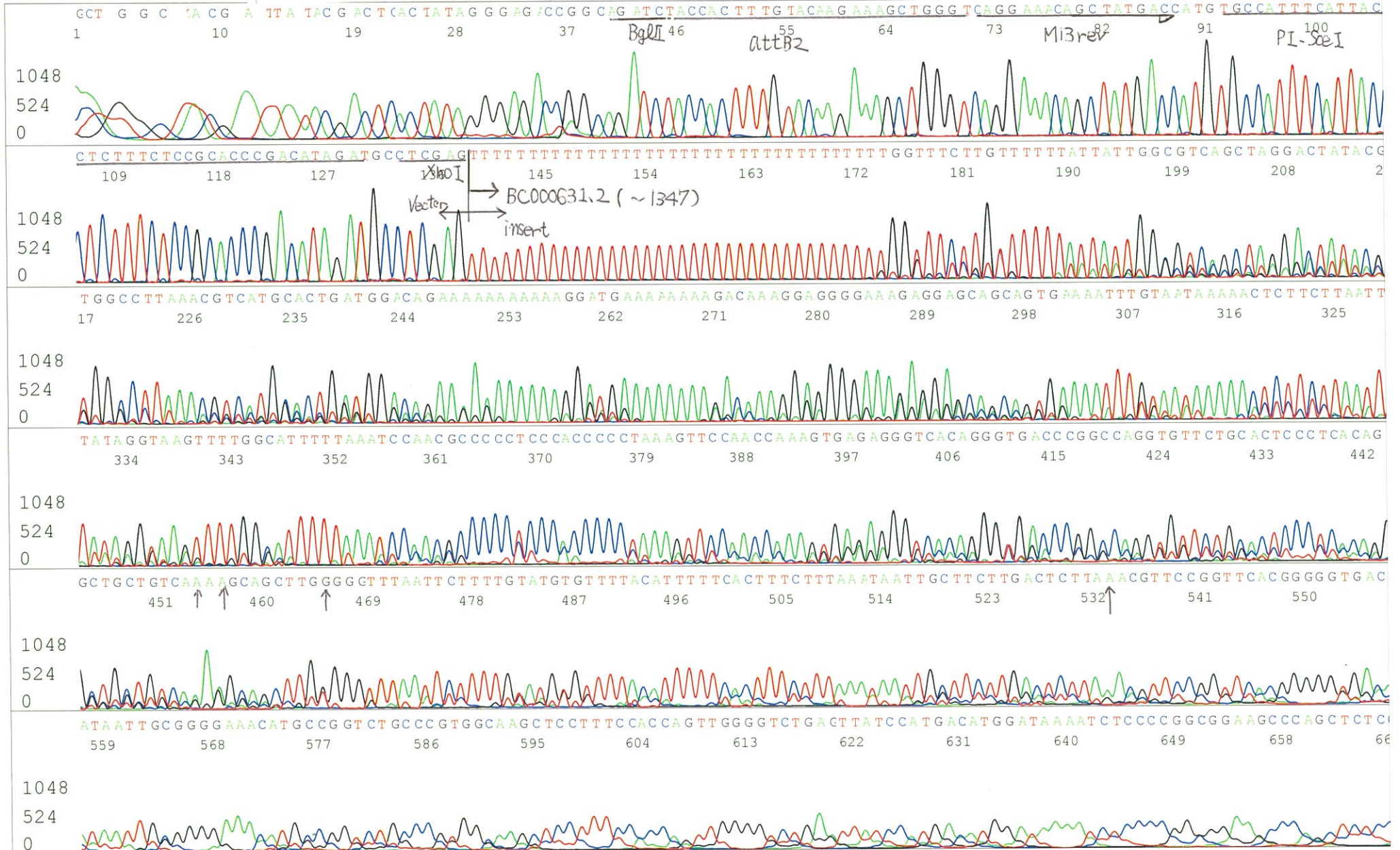
Version 5.4 HiSQV Bases: 719

Nov 07, 2013 03:06PM, JST

Nov 07, 2013 03:46PM, JST

Spacing:11.4 Pts/Panel1350

Plate Name: 20131107_mix



S/N G:610 A:523 T:558 C:364
KB.bcp
KB 1.4.1.8 Cap:20

