

**RIKEN Clone ID : IRAL004L23**

Lot#: 7566\_A7Kt

Vector : pOTB7

|               |            |         |
|---------------|------------|---------|
| Gene          | YTHDF2     |         |
| Accession No. | BC002559.2 | 2300 bp |
|               | CDS        | 1740 bp |

● Plasmid DNA purification

Date : 171129

Culture : LB (25 ug/ml Chloramphenicol) 5 ml → at 37 deg C over night

Date : 171130

Purification : QIAGEN Miniprep kit → dH<sub>2</sub>O 100 ul

● Digestion by restriction enzyme/Concentration calibration

Date : 171205

DNA concentration (O.D.): 92 ng/ul

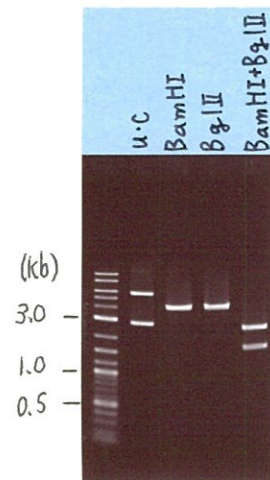
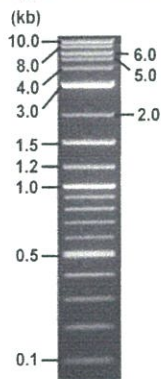
< Size of fragment expected from this clone >

|                        |           |    |
|------------------------|-----------|----|
| DNA                    | 1         | ul |
| Enzyme (BamHI + BglII) | 0.5 + 0.5 | ul |
| Buffer H               | 1         | ul |
| dH <sub>2</sub> O      | 7         | ul |
| Total                  | 10        | ul |

|               |                |        |
|---------------|----------------|--------|
| BamHI         | 4.1            | kb     |
| BglII         | 4.1            | kb     |
| BamHI + BglII | 1.6kb (Vector) | 2.5 kb |

Electrophoresis : 1% agarose gel, 1x TAE Buffer

Marker : 2-Log DNA Ladder (NEB#N3200L)



● Adjust plasmid DNA solution to 25 ng/ul

Date : 171208

|                        |       |    |
|------------------------|-------|----|
| DNA ( <u>92</u> ng/ul) | 85.0  | ul |
| 10x TE                 | 31.2  | ul |
| dH <sub>2</sub> O      | 196.6 | ul |
| Total                  | 312.8 | ul |

● Confirmation of the insertion sequence

Date : 171205

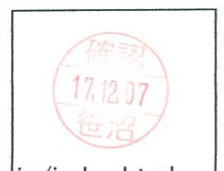
|                            |   |
|----------------------------|---|
| Primer A                   | pOTB7_F   |
| Primer B                   | pOTB7_R   |
| Primer C                   | -   |
| List of Sequencing Primers | <a href="http://dna.brc.riken.jp/en/GNPclone3en.html">http://dna.brc.riken.jp/en/GNPclone3en.html</a> |

● Shipping

Conc. : 25 ng/ul, Volume : 40 ul  
 Conc. :     ng/ul, Volume :     ul

APPROVED BY :

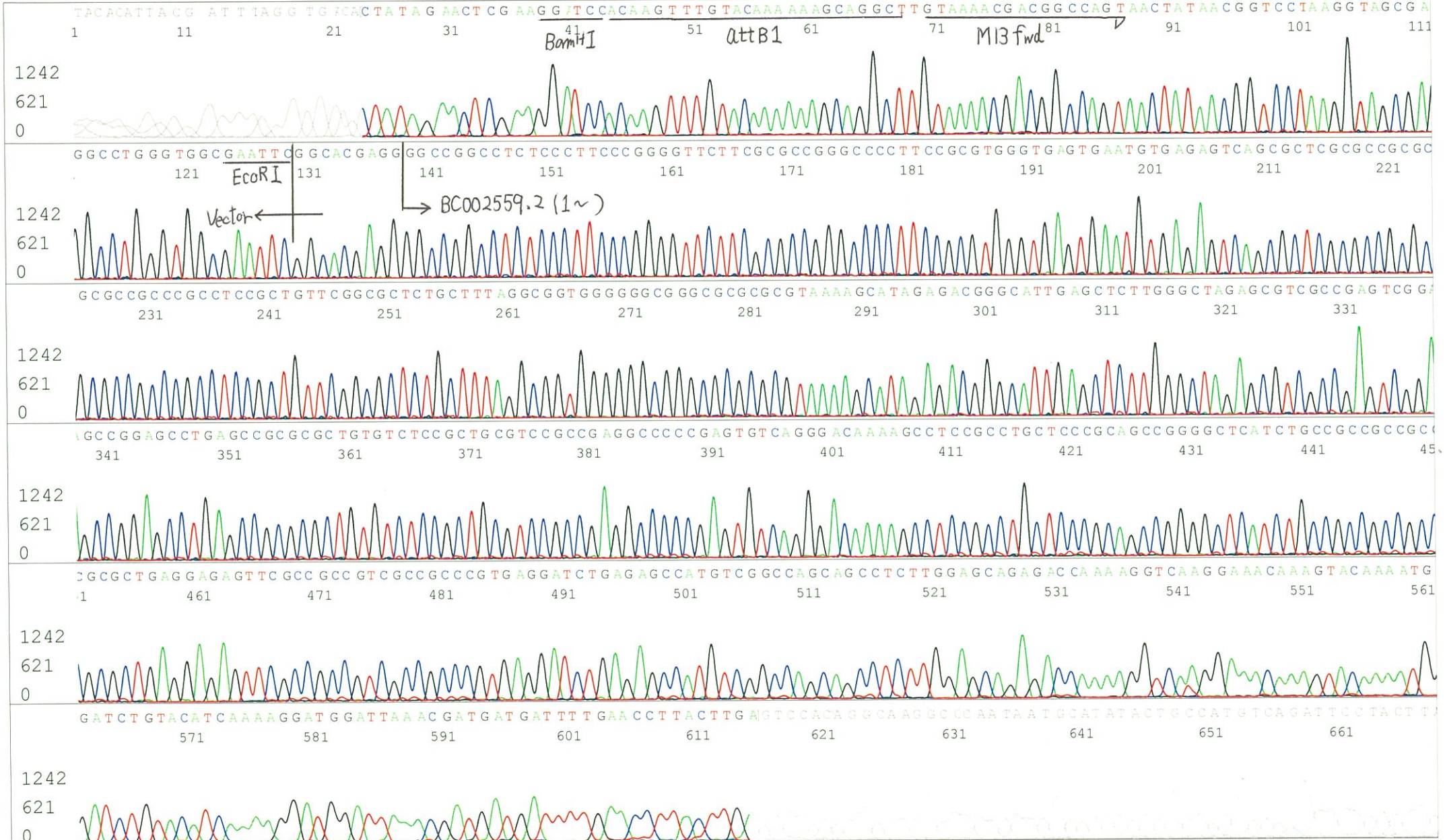
<http://dna.brc.riken.jp/index.html>



S/N G:71 A:58 T:55 C:108  
KB.bcp  
KB 1.4.1.8 Cap:5

Primer A: pOTB7-F  
5' AACGCGGCTACAATTAATACATAACC 3'

Gray line indicates quality value  
(QV) < 40.



S/N G:26 A:30 T:37 C:42  
KB.bcp  
KB 1.4.1.8 Cap:6

Primer B: pOTB7-R  
5' GTACTGCAGCCGATTCATTAATGC 3'

Gray line indicates quality value  
(QV) < 40.

