

RIKEN Clone ID : IRAL004A16

Vector : pOTB7

Gene	SOD1	
Accession No.	BC001034.1	645 bp
	<i>CDS</i>	465 bp
		1..645
		68..532

● Plasmid DNA purification

Date : 130528

Culture : LB (25 ug/ml Chloramphenicol) 10 ml → at 37 deg C over night

Date : 130529

Purification : QIAGEN Miniprep kit → dH₂O 100 ul

● Digestion by restriction enzyme/Concentration calibration

Date : 130529

DNA concentration (O.D.): 187 ng/ul

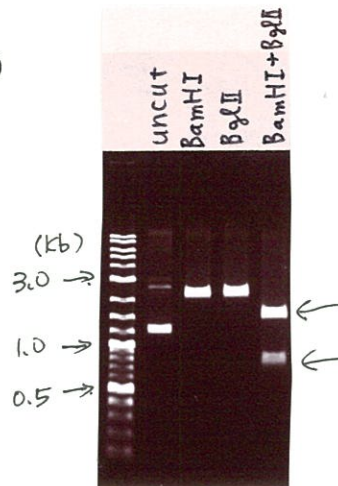
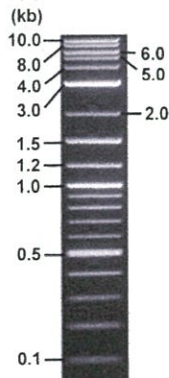
<Expected size of fragment from BC001034.1 >

DNA	0.2 ul
Enzyme (BamHI + BglII)	0.5 + 0.5 ul
Buffer H	1 ul
dH ₂ O	7.8 ul
Total	10 ul

BamHI	2446 bp
BglII	2446 bp
BamHI + BglII	1615bp (Vector) 831 bp

Electrophoresis : 1% agarose gel, 1x TAE Buffer

Marker : 2-Log DNA Ladder (NEB#N3200L)



● Confirmation of the insertion sequence

Date : 130531

Primer A	pOTB7_F
Primer B	pOTB7_R
Primer C	-
List of Sequencing Primers	http://dna.brc.riken.jp/en/GNPclone3en.html

● Adjustment of DNA concentration

Shipping amount : 40 ul

Concentration at the time of preparation of plasmid DNA : 25 ng/ul

Date : 130603

DNA (187 ng/ul)	85.0 ul
10x TE	63.6 ul
dH ₂ O	487.2 ul
Total	635.8 ul



APPROVED BY :

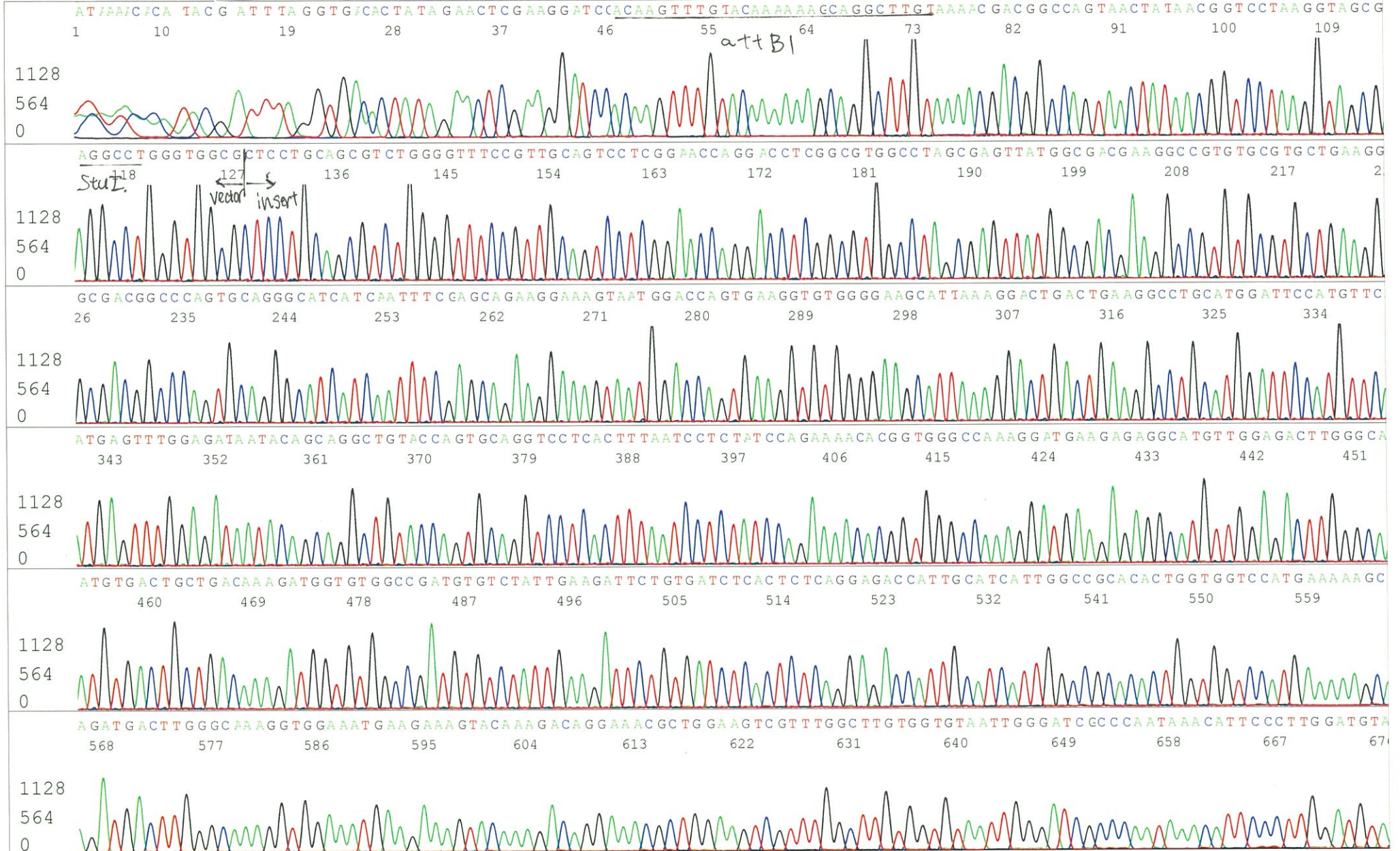
<http://dna.brc.riken.jp/index.html>

S/N G:562 A:278 T:250 C:27
KB.bcp
KB 1.4.1.8 Cap:20

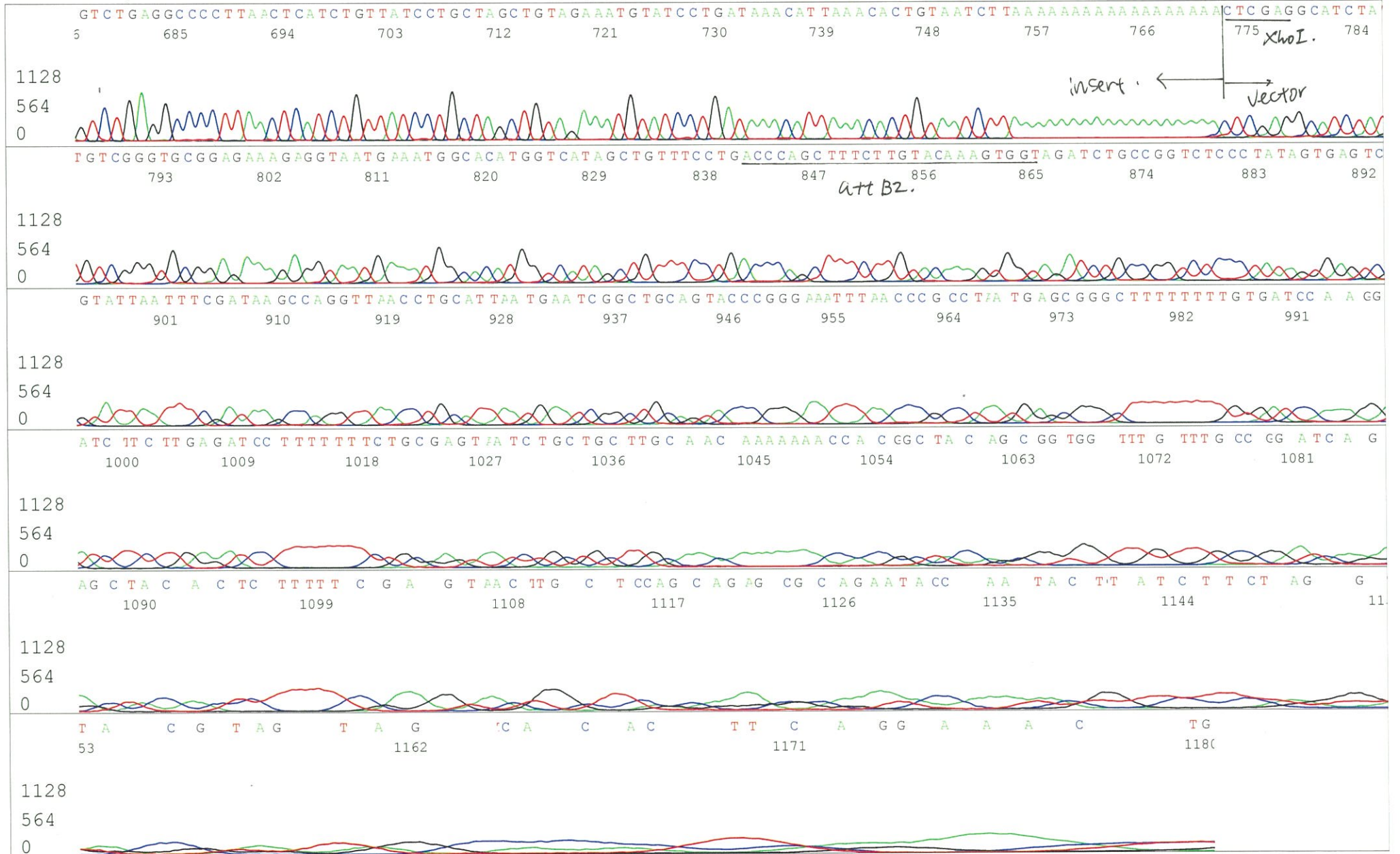
Primer A: pOTB7-F
5' AACGCGGCTACAATTAATACATAACC 3'

IRAL004A16_A3En_1_pOTB7_F
KB_3500_POP7_BDTv3.mob
Pts 1244 to 12999 Pk1 Loc:1221
Version 5.4 HiSQV Bases: 1023

May 31,2013 10:49AM, JST
May 31,2013 11:15AM, JST
Spacing:11.47 Pts/Panel1350
Plate Name: 20130531_mix

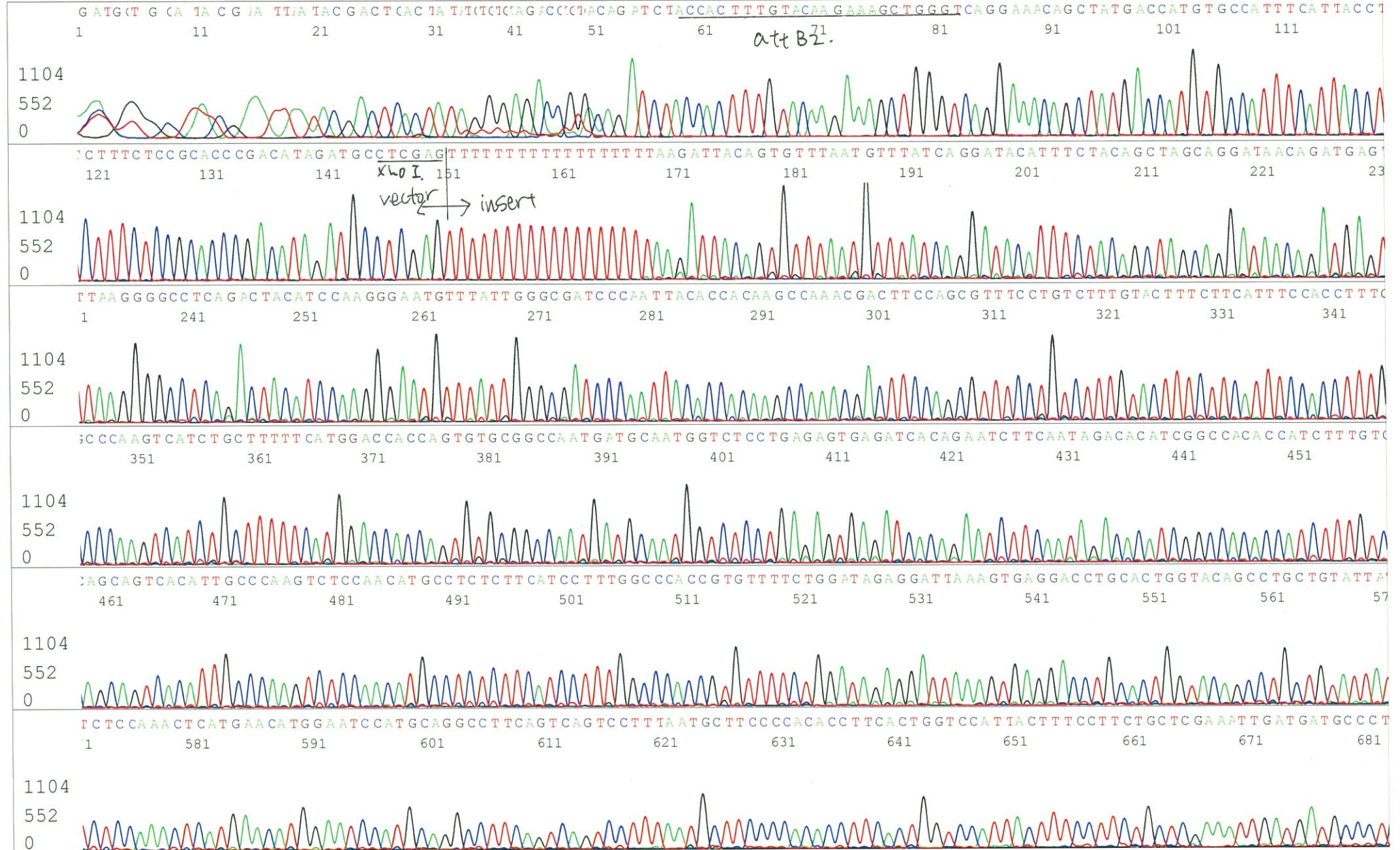


S/N G:562 A:278 T:250 C:277
KB.bcp
KB 1.4.1.8 Cap:20



S/N G:201 A:142 T:159 C:169
KB.bcp
KB 1.4.1.8 Cap:23

Primer B: pOTB7-R
5' GTACTGCAGCCGATTCATTAATGC 3'



S/N G:201 A:142 T:159 C:169
KB.bcp
KB 1.4.1.8 Cap:23

