

RIKEN Clone ID : IRAL003P02

Vector : pOTB7

Gene	KIAA1627	
Accession No.	BC006565.2	2138 bp
	CDS	1371 bp

● Plasmid DNA purification

Date : 160222

Culture : LB (25 ug/ml Chloramphenicol) 5 ml → at 37 deg C over night

Date : 160223

Purification : QIAGEN Miniprep kit → dH₂O 100 ul

● Digestion by restriction enzyme/Concentration calibration

Date : 160223

DNA concentration (O.D.): 110 ng/ul

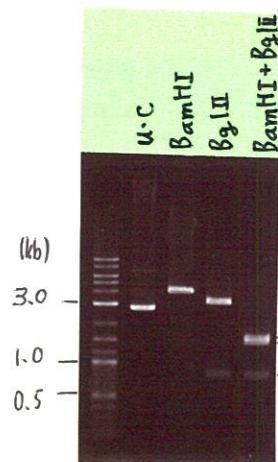
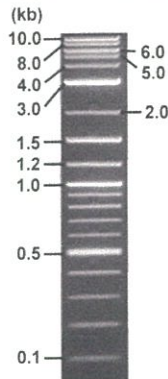
< Size of fragment expected from this clone >

DNA	0.9	ul
Enzyme (BamHI + BglII)	0.5 + 0.5	ul
Buffer H	1	ul
dH ₂ O	7.1	ul
Total	10	ul

BamHI	3.9	kb
BglII	3.1, 0.83	kb
BamHI + BglII	1.6kb (Vector)	1.5, 0.83kb

Electrophoresis : 1% agarose gel, 1x TAE Buffer

Marker : 2-Log DNA Ladder (NEB#N3200L)



● Adjust plasmid DNA solution to 25 ng/ul

Date : 160229

DNA (110 ng/ul)	82.0	ul
10x TE	36.1	ul
dH ₂ O	242.7	ul
Total	360.8	ul

● Confirmation of the insertion sequence

Date : 160226

Primer A	pOTB7_F
Primer B	pOTB7_R
Primer C	XXXXXXXXXX
List of Sequencing Primers	http://dna.brc.riken.jp/en/GNPclone3en.html

● Shipping

Conc. : 25 ng/ul, Volume : 40 ul

Conc. : ~~XX ng/ul~~, Volume : ~~XX ul~~



APPROVED BY :

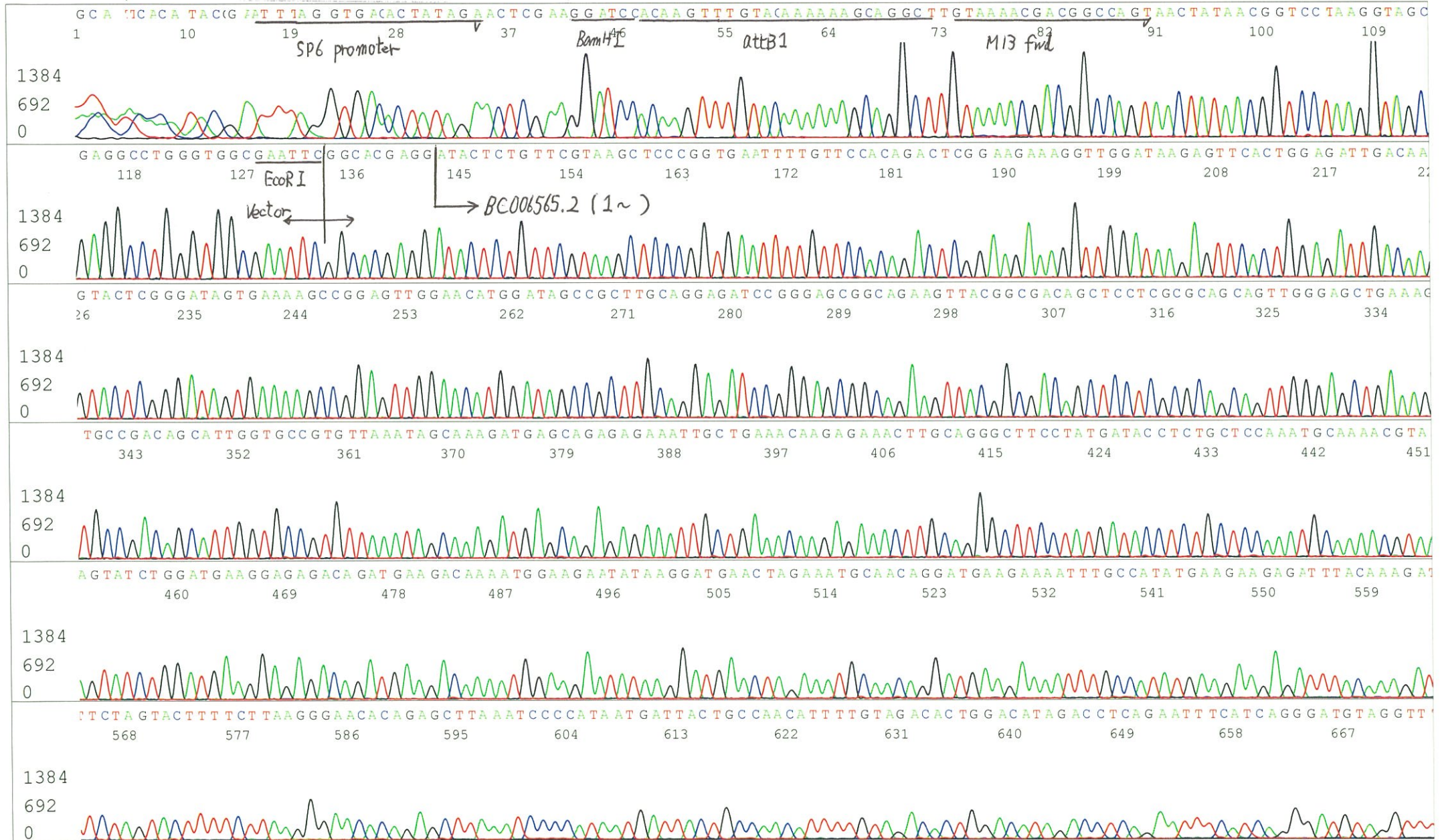
<http://dna.brc.riken.jp/index.html>

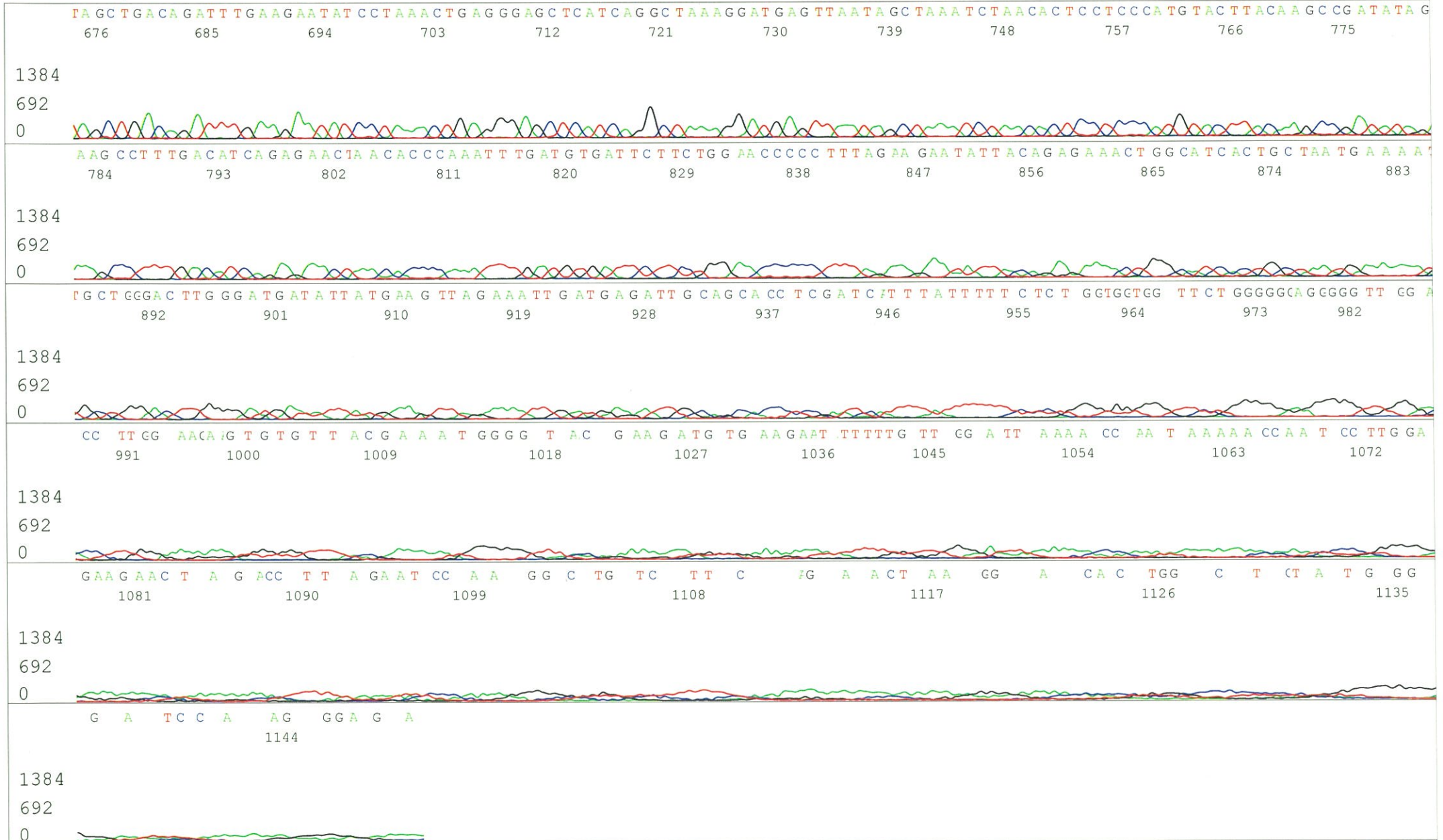
S/N G:61 A:52 T:44 C:34
KB.bcp
KB 1.4.1.8 Cap:2

Primer A: pOTB7-F
5' AACGCGGCTACAATTAATACATAACC 3'

IRAL003P02_A6Bj_pOTB7_F_A11_02
IRAL003P02_A6Bj_pOTB7_F
KB_3500_POP7_BDTv3.mob
Pts 1358 to 12849 Pk1 Loc:1335
Version 6.0 HiSQV Bases: 980

Inst Model/Name 3500/3500 Instrument
Feb 26,2016 09:52AM, JST
Feb 26,2016 10:18AM, JST
Spacing:11.46 Pts/Panel1350
Plate Name: 20160226_GNP





S/N G:50 A:53 T:65 C:48
KB.bcp
KB 1.4.1.8 Cap:5

Primer B: pOTB7-R
5' GTACTGCAGCCGATTCATTAATGC 3'

IRAL003P02_A6Bj_pOTB7_R_B11_05
IRAL003P02_A6Bj_pOTB7_R
KB_3500_POP7_BDTv3.mob
Pts 1350 to 12887 Pk1 Loc:1327
Version 6.0 HiSQV Bases: 905

Inst Model/Name 3500/3500 Instrument
Feb 26,2016 09:52AM, JST
Feb 26,2016 10:18AM, JST
Spacing:11.4 Pts/Panel1350
Plate Name: 20160226_GNP

