

RIKEN Clone ID : IRAL003F10

Lot#: 7566_A5F1

Vector : pOTB7

Gene	HCCS	
Accession No.	BC001691.2	1035 bp
	<i>CDS</i>	807 bp

● Plasmid DNA purification

Date : 150618

Culture : LB (25 ug/ml Chloramphenicol) 5 ml → at 37 deg C over night

Date : 150619

Purification : QIAGEN Miniprep kit → dH₂O 100 ul

● Digestion by restriction enzyme/Concentration calibration

Date : 150619

DNA concentration (O.D.): 85 ng/ul

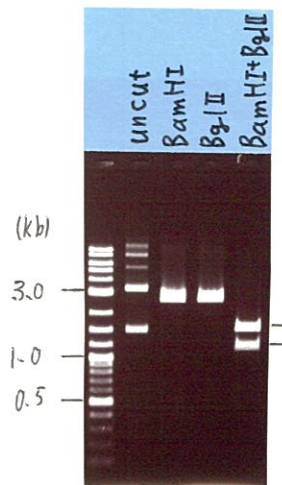
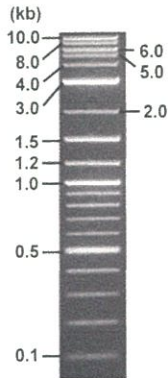
< Size of fragment expected from this clone >

DNA	0.5	ul
Enzyme (BamHI + BglII)	0.5 + 0.5	ul
Buffer H	1	ul
dH ₂ O	7.5	ul
Total	10	ul

BamHI	2.8 kb
BglII	2.8 kb
BamHI + BglII	1.6kb (Vector) 1.2 kb

Electrophoresis : 1% agarose gel, 1x TAE Buffer

Marker : 2-Log DNA Ladder (NEB#N3200L)



● Adjust plasmid DNA solution to 25 ng/ul

Date : 150625

DNA (<u>85</u> ng/ul)	<u>80.0</u>	ul
10x TE	<u>27.2</u>	ul
dH ₂ O	<u>164.8</u>	ul
Total	<u>272.0</u>	ul

● Confirmation of the insertion sequence

Date : 150625

Primer A	pOTB7_F
Primer B	pOTB7_R
Primer C	
List of Sequencing Primers	http://dna.brc.riken.jp/en/GNPclone3en.html

● Shipping

Conc. : 25 ng/ul, Volume : 40 ul

Conc. : ng/ul, Volume : ul

APPROVED BY :

<http://dna.brc.riken.jp/index.html>

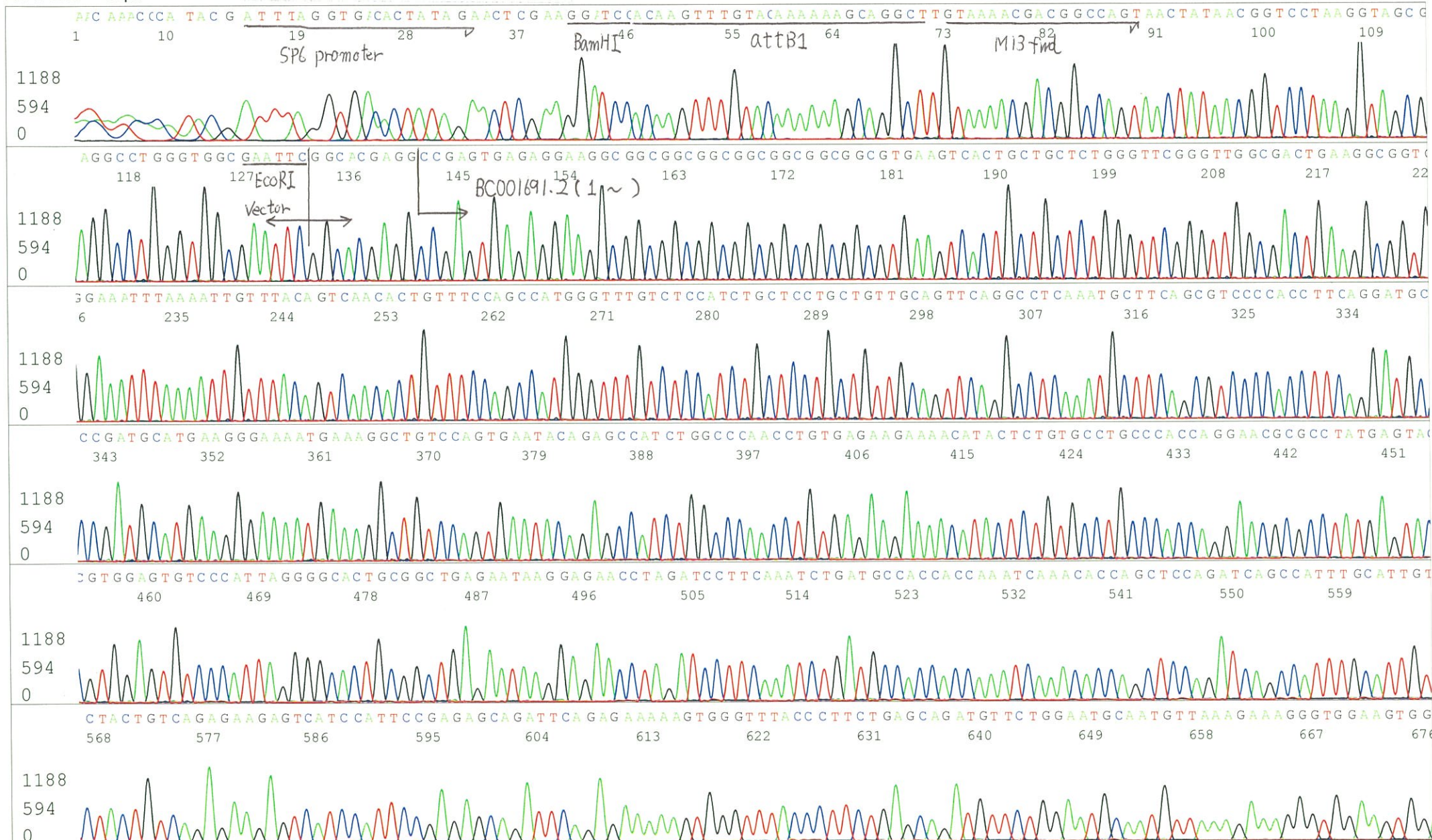


S/N G:461 A:270 T:199 C:204
KB.bcp
KB 1.4.1.8 Cap:7

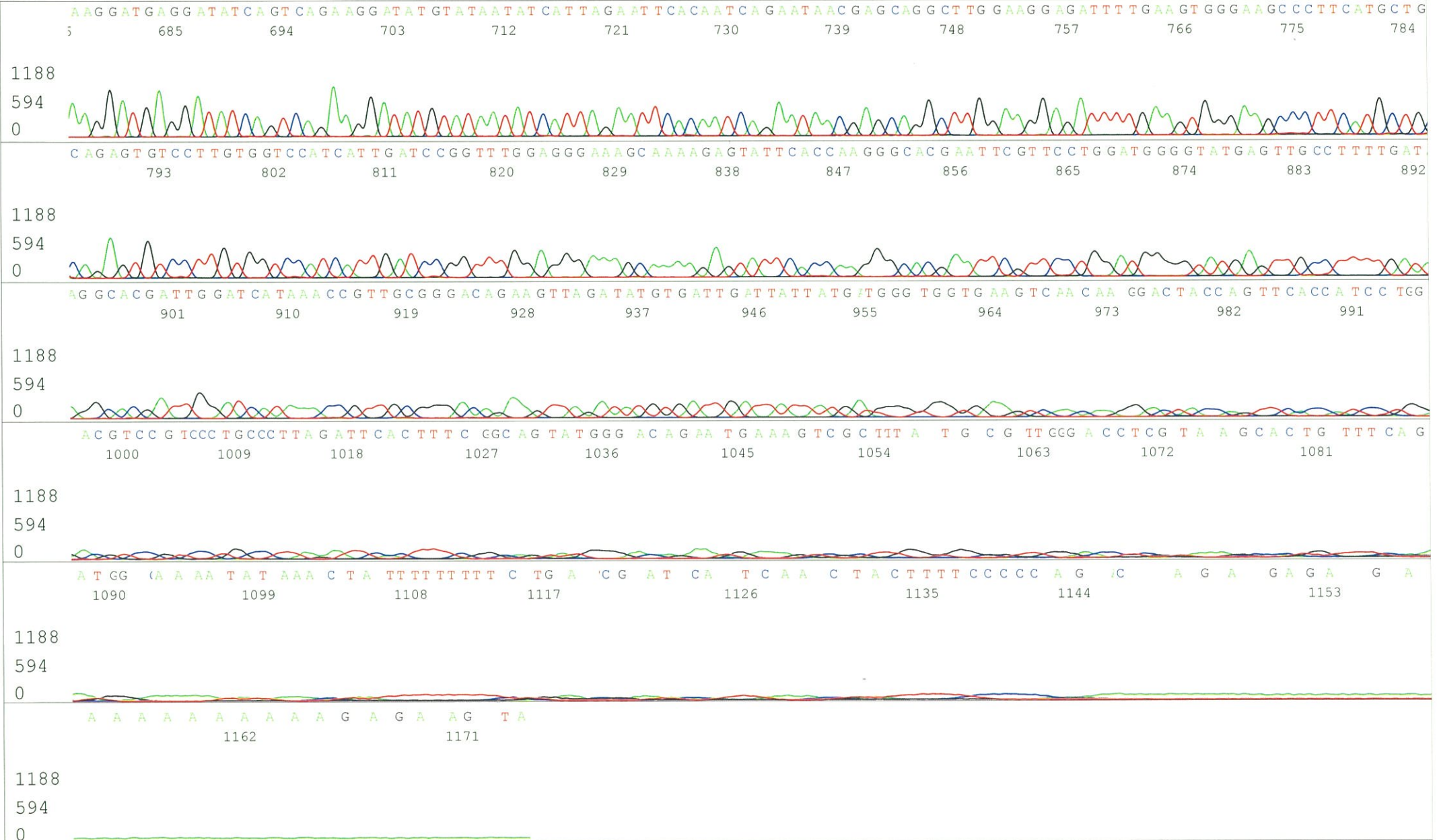
Primer A: pOTB7-F
5' AACGGGGCTACAATTAATACATAACC 3'

IRAL003F10_A5Fh_pOTB7_F_C10_07
IRAL003F10_A5Fh_pOTB7_F
KB_3500_POP7_BDTv3.mob
Pts 1391 to 13659 Pk1 Loc:1368
Version 6.0 HISQV Bases: 1038

Inst Model/Name 3500/3500 Instrument
Jun 25,2015 09:57AM, JST
Jun 25,2015 10:24AM, JST
Spacing:12.1 Pts/Panel1350
Plate Name: 20150625_GNP



S/N G:461 A:270 T:199 C:204
KB.bcp
KB 1.4.1.8 Cap:7

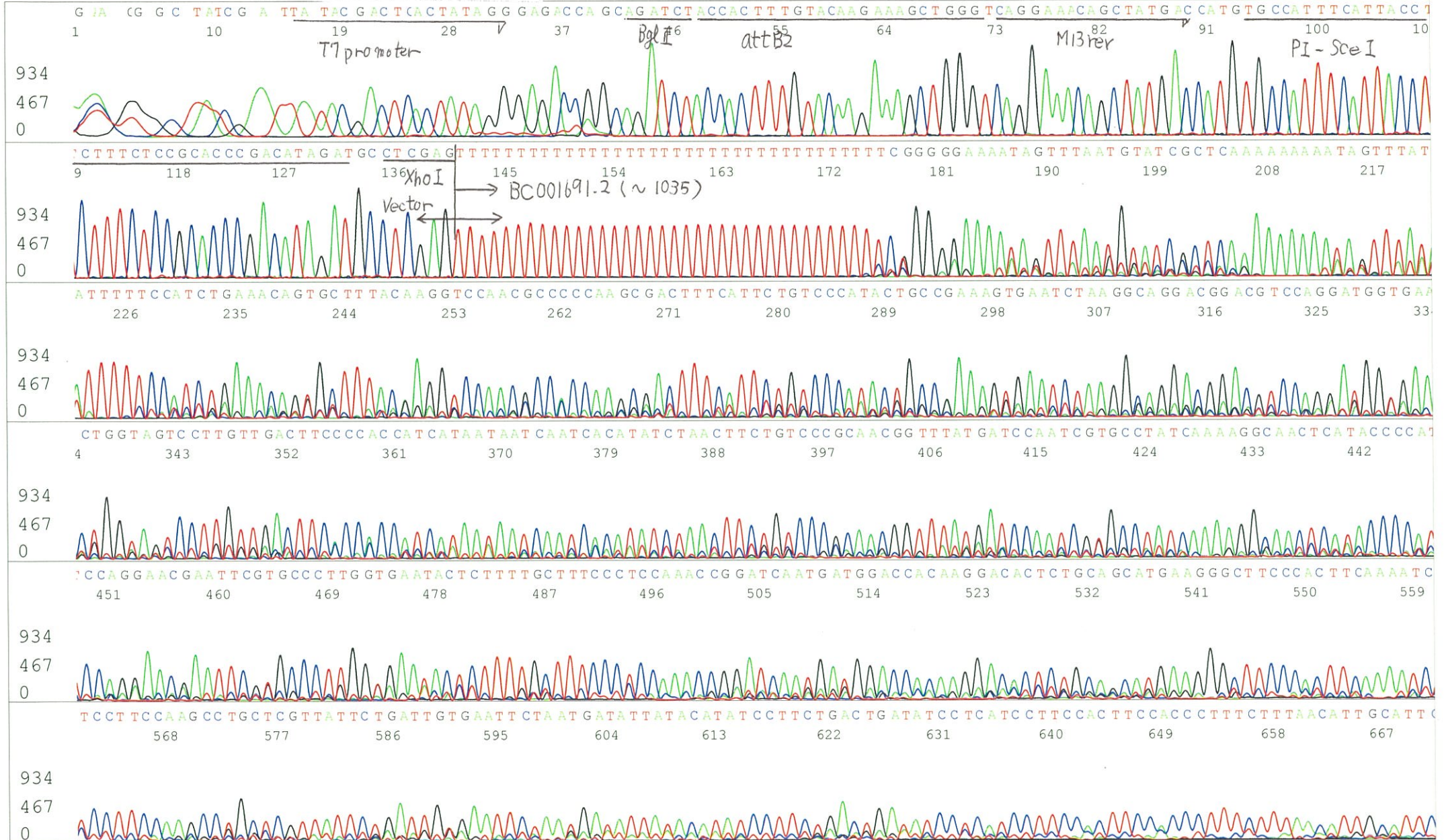


S/N G:337 A:250 T:223 C:216
KB.bcp
KB 1.4.1.8 Cap:10

Primer B: pOTB7-R
5' GTACTGCAGCCGATTCATTAATGC 3'

IRAL003F10_A5FH_pOTB7_R_D10_10
IRAL003F10_A5FH_pOTB7_R
KB_3500_POP7_BDTv3.mob
Pts 1380 to 13736 Pk1 Loc:1357
Version 6.0 HiSQV Bases: 901

Inst Model/Name 3500/3500 Instrument
Jun 25,2015 09:57AM, JST
Jun 25,2015 10:24AM, JST
Spacing:12.2 Pts/Panel1350
Plate Name: 20150625_GNP



S/N G:337 A:250 T:223 C:216
KB.bcp
KB 1.4.1.8 Cap:10

IRAL003F10_A5Fhⁱ_pOTB7_R_D10_10
IRAL003F10_A5Fhⁱ_pOTB7_R
KB_3500_POP7_BDTv3.mob
Pts 1380 to 13736 Pk1 Loc:1357
Version 6.0 HiSQV Bases: 901

Inst Model/Name 3500/3500 Instrument
Jun 25,2015 09:57AM, JST
Jun 25,2015 10:24AM, JST
Spacing:12.2 Pts/Panel1350
Plate Name: 20150625_GNP

