

RIKEN Clone ID : IRAL003E19

Lot#: 7566_A5Gd

Vector : pOTB7

Gene	LGALS1	
Accession No.	BC001693.1	543 bp
	<i>CDS</i>	408 bp

● Plasmid DNA purification

Date : 150713

Culture : LB (25 ug/ml Chloramphenicol) 5 ml → at 37 deg C over night

Date : 150714

Purification : QIAGEN Miniprep kit → dH₂O 100 ul

● Digestion by restriction enzyme/Concentration calibration

Date : 150714

DNA concentration (O.D.): 101 ng/ul

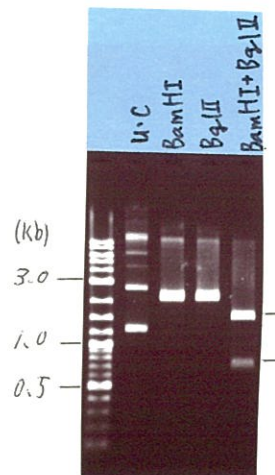
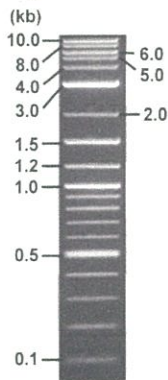
< Size of fragment expected from this clone >

DNA	0.5	ul
Enzyme (BamHI + BglII)	0.5 + 0.5	ul
Buffer H	1	ul
dH ₂ O	7.5	ul
Total	10	ul

BamHI	2.3	kb
BglII	2.3	kb
BamHI + BglII	1.6kb (Vector)	0.73 kb

Electrophoresis : 1% agarose gel, 1x TAE Buffer

Marker : 2-Log DNA Ladder (NEB#N3200L)



● Adjust plasmid DNA solution to 25 ng/ul

Date : 150721

DNA (<u>101</u> ng/ul)	<u>80.0</u>	ul
10x TE	<u>32.3</u>	ul
dH ₂ O	<u>210.9</u>	ul
Total	<u>323.2</u>	ul

● Confirmation of the insertion sequence

Date : 150716

Primer A	pOTB7_F
Primer B	pOTB7_R
Primer C	poly(A) region primer #0
List of Sequencing Primers	http://dna.brc.riken.jp/en/GNPclone3en.html

● Shipping

Conc. : 25 ng/ul, Volume : 40 ul

Conc. : ng/ul, Volume : ul

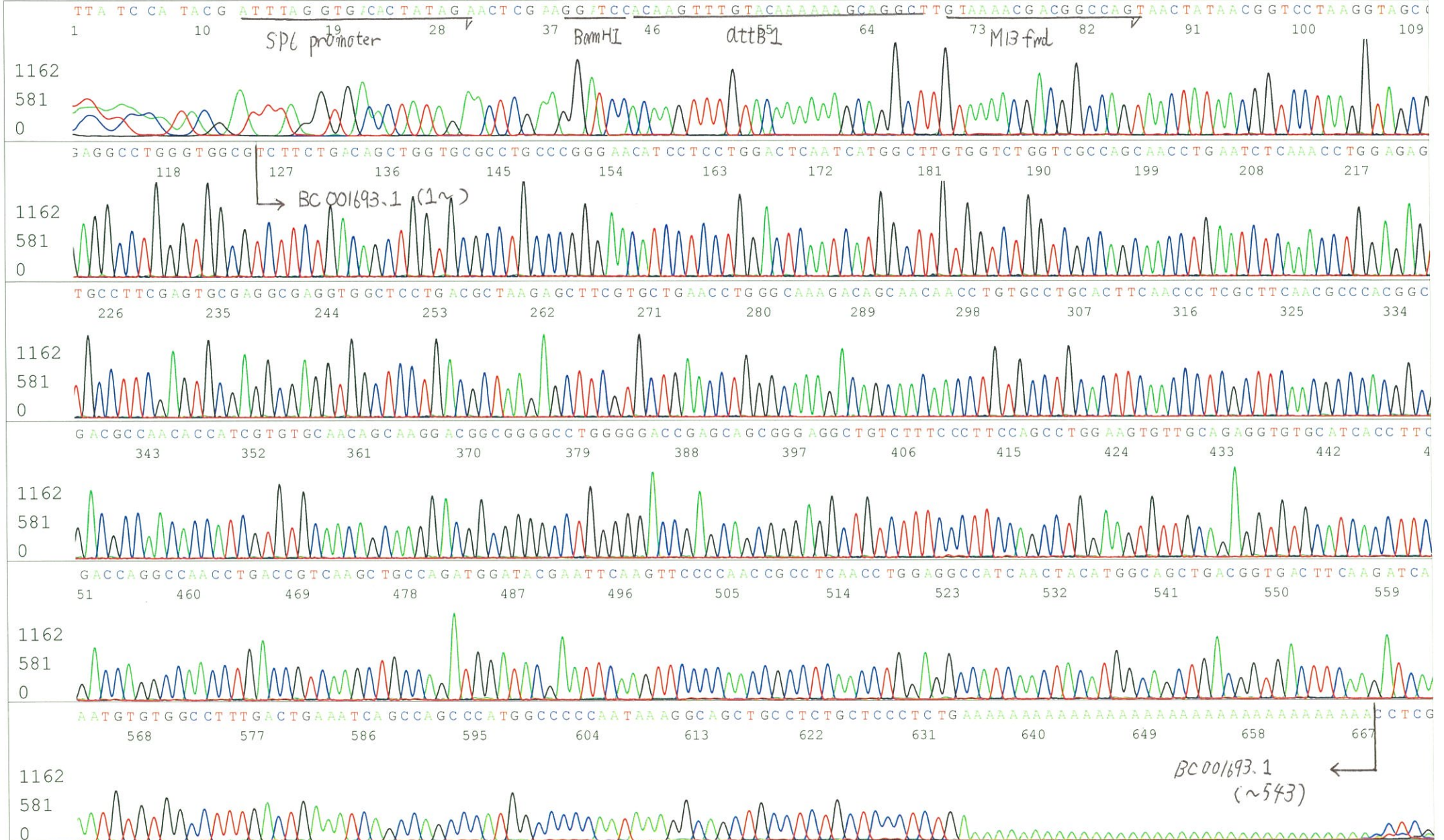
APPROVED BY :

<http://dna.brc.riken.jp/index.html>

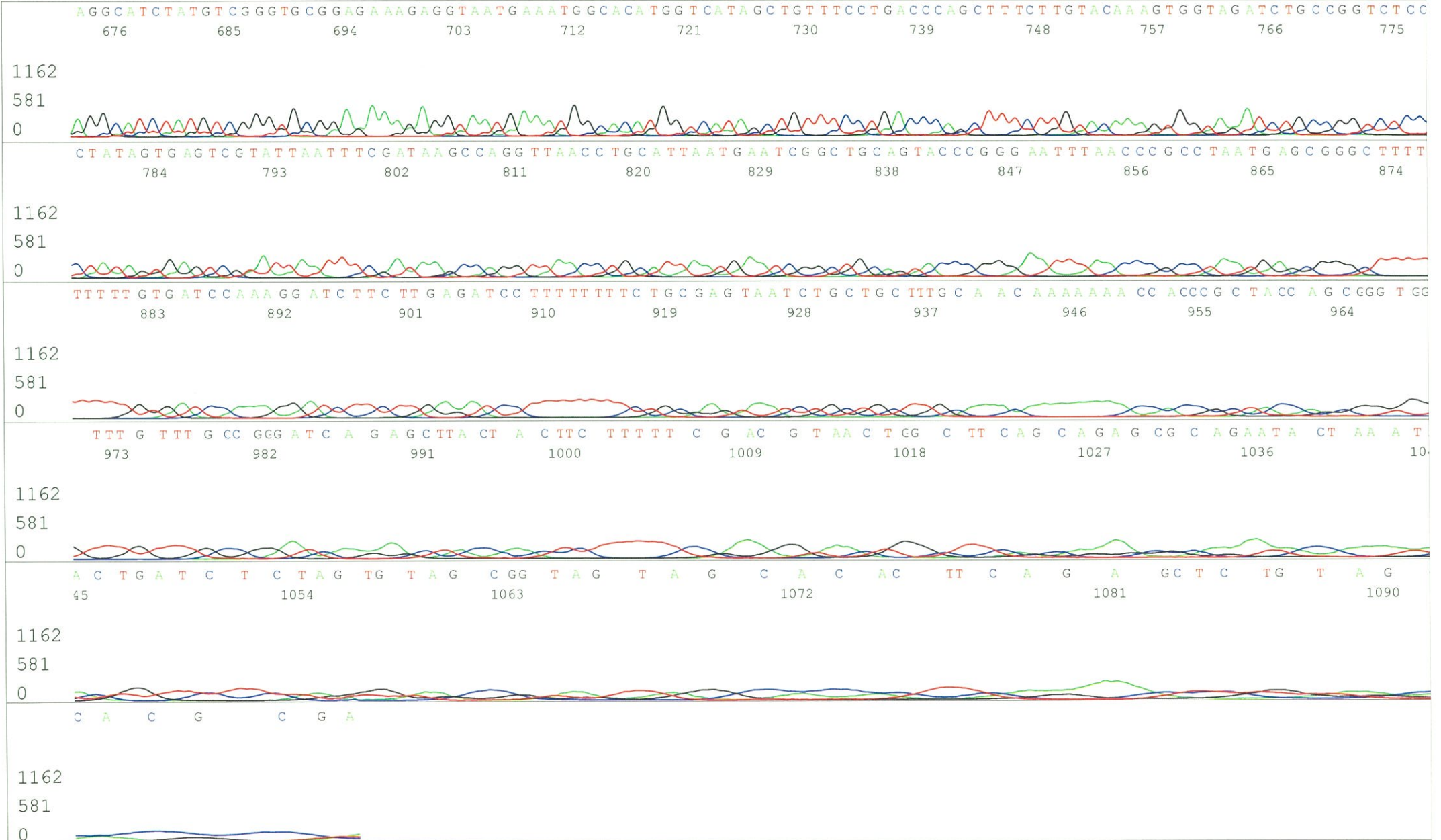


S/N G:1007 A:625 T:530 C:622
KB.bcp
KB 1.4.1.8 Cap:2

Primer A: pOTB7-F
5' AACGCGGCTACAATTAATACATAACC 3'

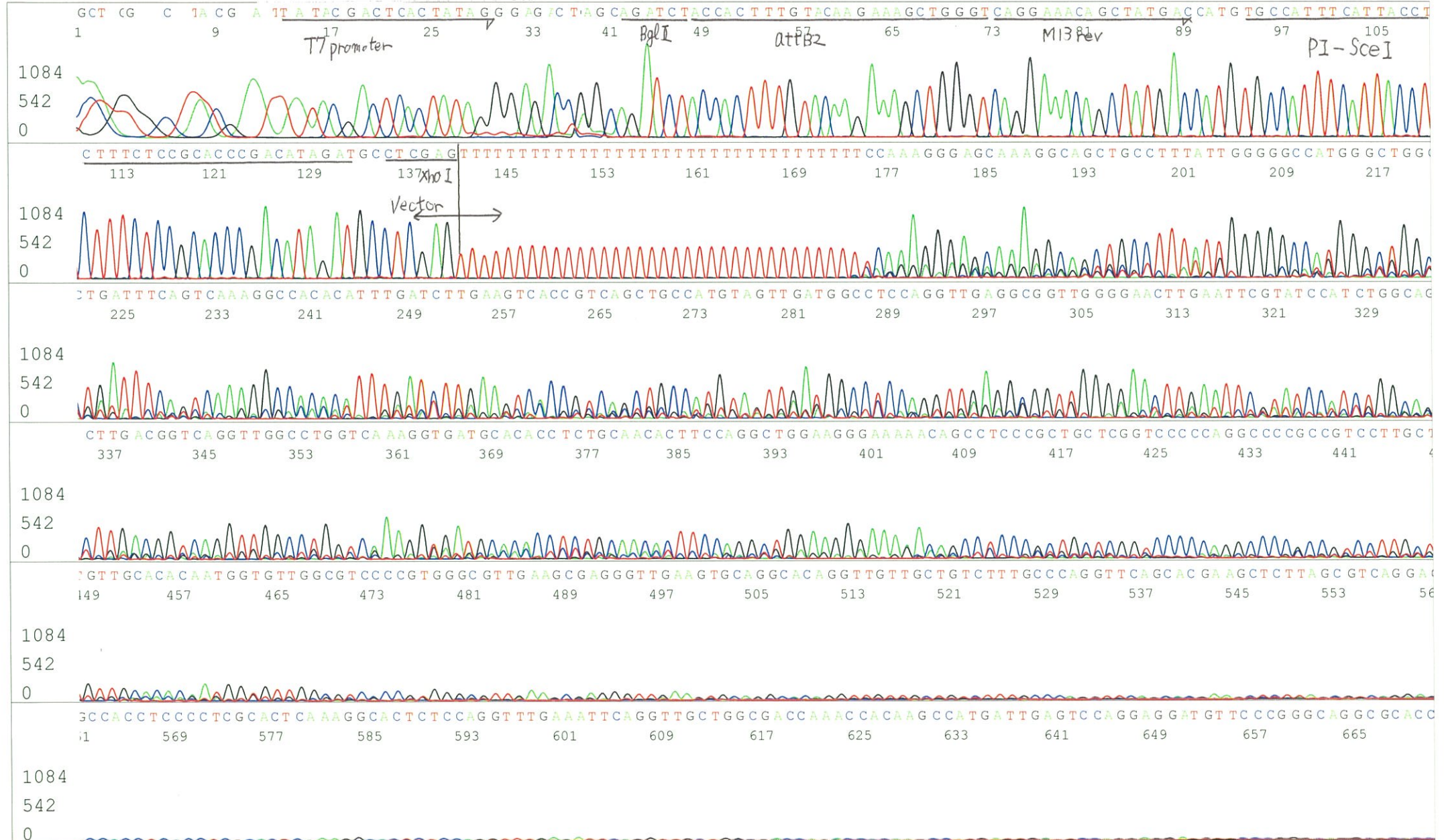


S/N G:1007 A:625 T:530 C:622
KB.bcp
KB 1.4.1.8 Cap:2



S/N G:375 A:210 T:225 C:195
KB.bcp
KB 1.4.1.8 Cap:5

Primer B: pOTB7-R
5' GTACTGCAGCCGATTCATTAATGC 3'

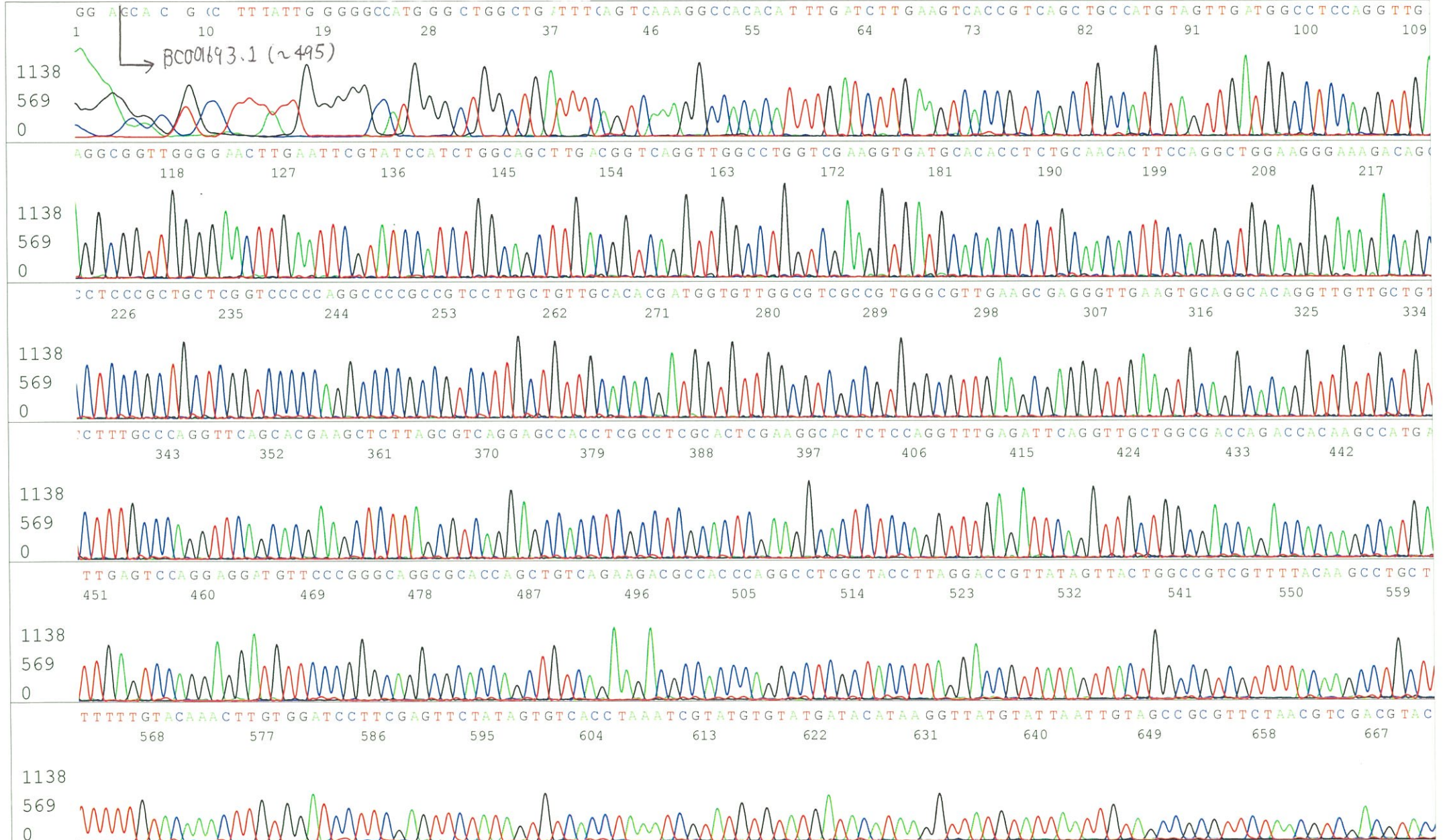


S/N G:375 A:210 T:225 C:195
KB.bcp
KB 1.4.1.8 Cap:5



S/N G:259 A:133 T:116 C:122
KB.bcp
KB 1.4.1.8 Cap:8

Primer C : Poly(A) region primer #0
5' TTTTTTTTTTTTTTTTTTTTTTNNN 3'



S/N G:259 A:133 T:116 C:122
KB.bcp
KB 1.4.1.8 Cap:8

