

**RIKEN Clone ID : IRAL001017**

Lot#: 7566\_A6H8

Vector : pOTB7

Gene	BAT1	
Accession No.	BC000361.2	1533 bp
	CDS	1287 bp

● Plasmid DNA purification

Date : 160809

Culture : LB (25 ug/ml Chloramphenicol) 5 ml -> at 37 deg C over night

Date : 160810

Purification : QIAGEN Miniprep kit -> dH<sub>2</sub>O 100 ul

● Digestion by restriction enzyme/Concentration calibration

Date : 160816

DNA concentration (O.D.): 137 ng/ul

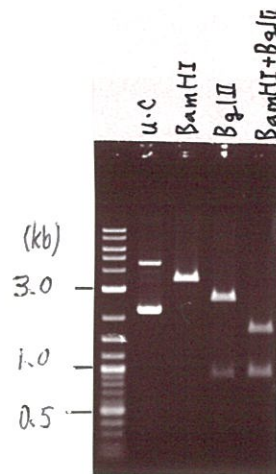
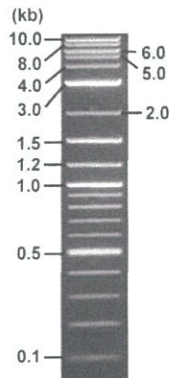
< Size of fragment expected from this clone >

DNA	0.7 ul
Enzyme (BamHI + BglII)	0.5 + 0.5 ul
Buffer H	1 ul
dH <sub>2</sub> O	7.3 ul
Total	10 ul

BamHI	3.3 kb
BglII	2.5, 0.85 kb
BamHI + BglII	1.6kb (Vector) 0.87, 0.85 kb

Erectrophoresis : 1% agarose gel, 1x TAE Buffer

Marker : 2-Log DNA Ladder (NEB#N3200L)



● Adjust plasmid DNA solution to 25 ng/ul

Date : 160819

DNA ( <u>137</u> ng/ul)	76.0 ul
10x TE	41.7 ul
dH <sub>2</sub> O	298.8 ul
Total	416.5 ul

● Confirmation of the insertion sequence

Date : 160817

Primer A	pOTB7_F
Primer B	pOTB7_R
Primer C	-
List of Sequencing Primers	<a href="http://dna.brc.riken.jp/en/GNPclone3en.html">http://dna.brc.riken.jp/en/GNPclone3en.html</a>

● Shipping

Conc. : 25 ng/ul, Volume : 40 ul

Conc. :      ng/ul, Volume :      ul

APPROVED BY :

<http://dna.brc.riken.jp/index.html>



S/N G:627 A:607 T:523 C:673

Primer A: pOTB7-F

IRAL001O17\_A6H8\_pOTB7\_F

Aug 17, 2016 02:53PM, JST

KB.bcp

KB\_3500\_POP7\_BDTv3.mob

Aug 17, 2016 03:19PM, JST

KB 1.4.1.8 Cap:9

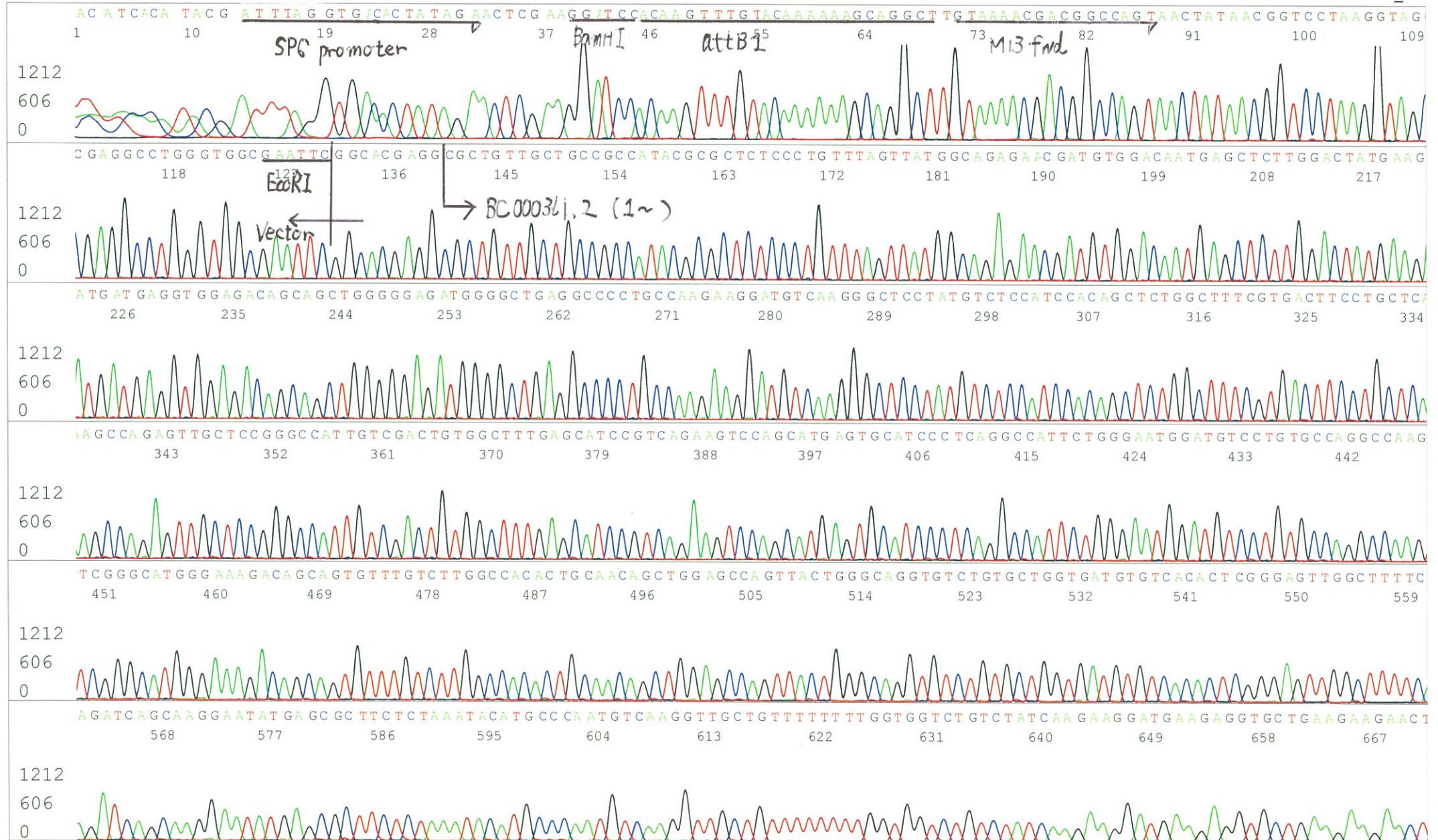
5' AACGCGGCTACAATTAATACATAACC 3'

Pts 1413 to 12677 PK1 Loc:1390

Version 6.0 HiSQV Bases: 970

Spacing:11.26 Pts/Panel1350

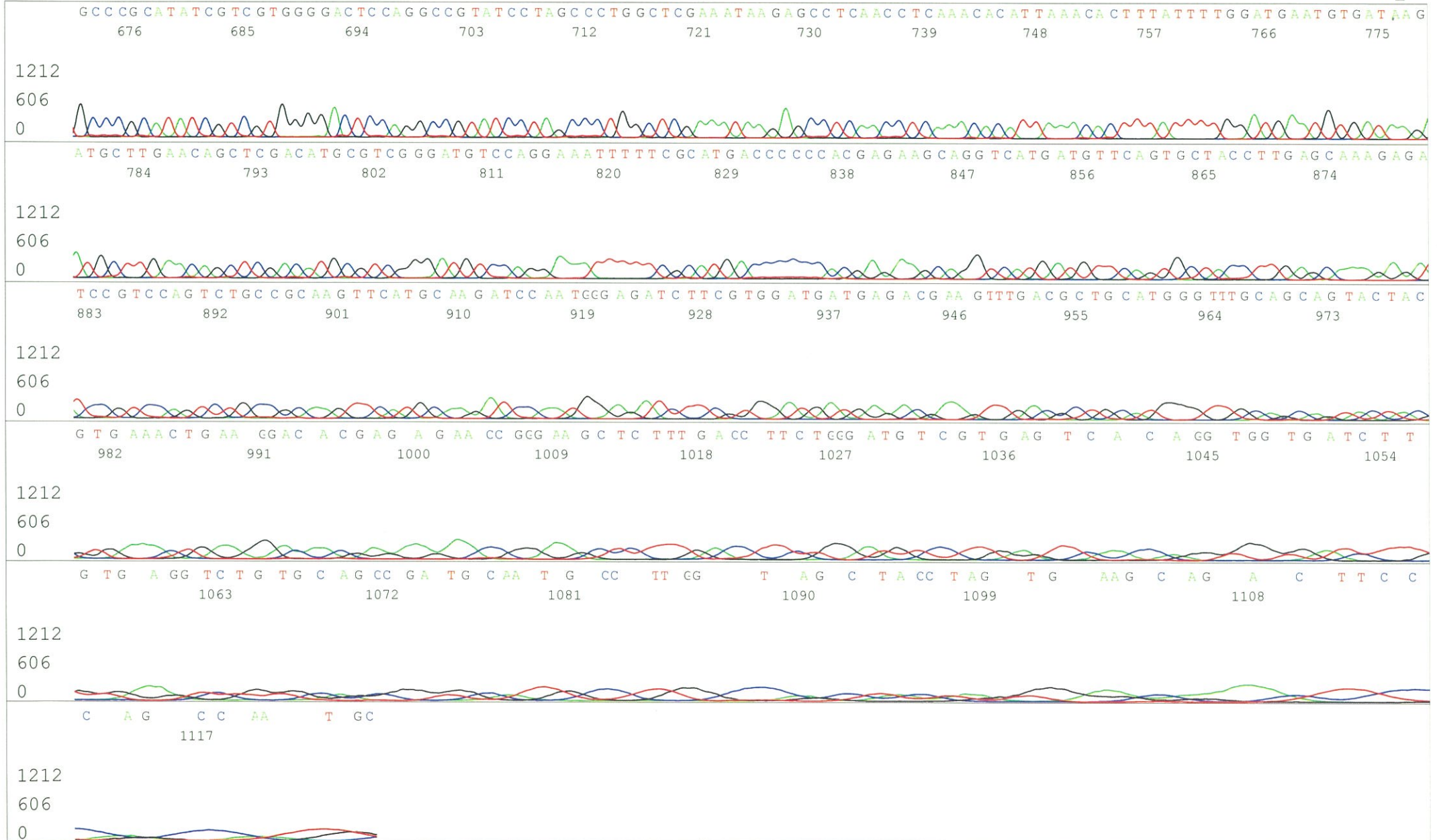
Plate Name: 20160817\_mix



S/N G:627 A:607 T:523 C:673  
KB.bcp  
KB 1.4.1.8 Cap:9

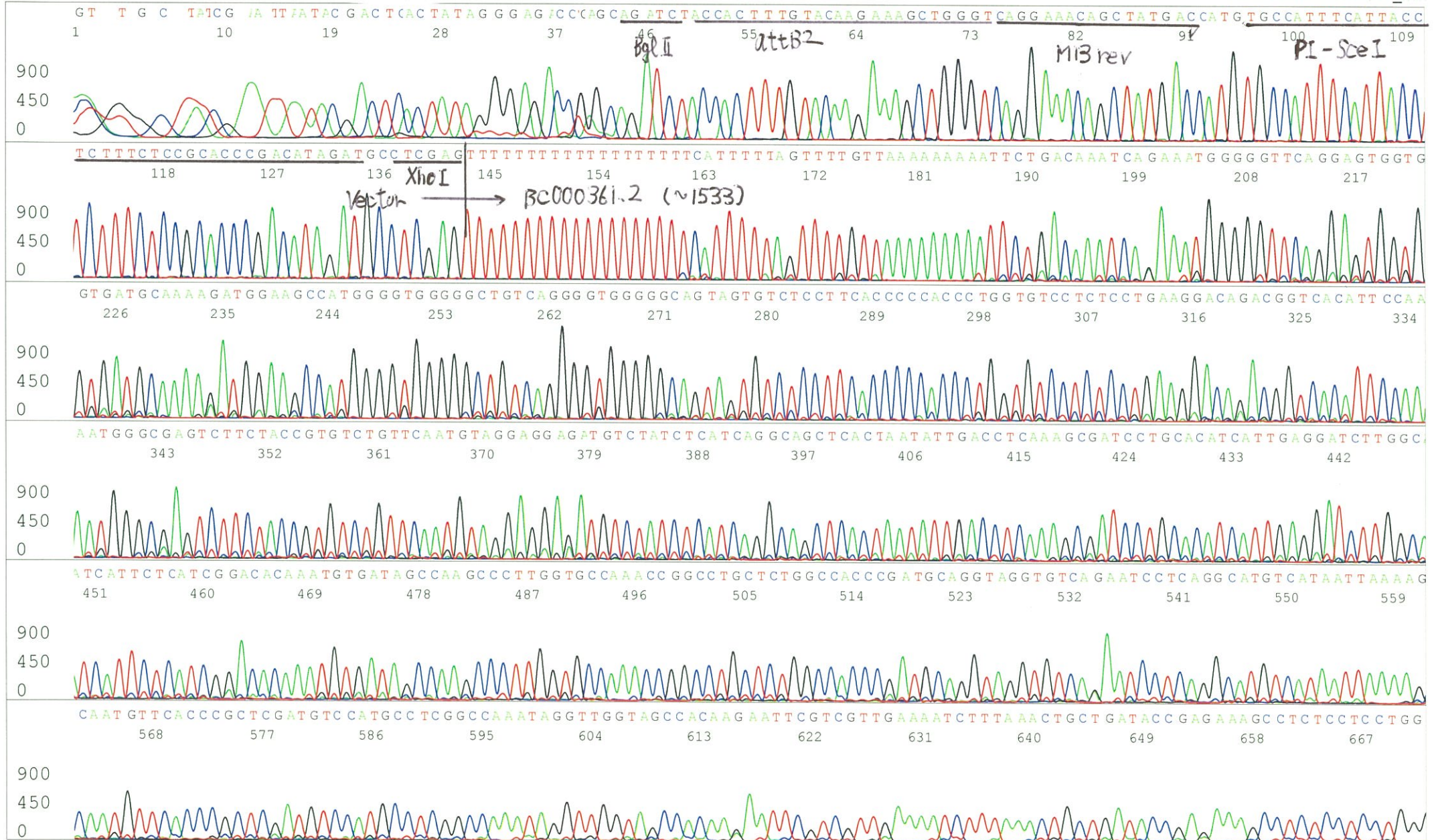
IRAL001O17\_A6H8\_pOTB7\_F\_C03\_09\_ABI24  
IRAL001O17\_A6H8\_pOTB7\_F  
KB\_3500\_POP7\_BDTv3.mob  
Pts 1413 to 12677 Pk1 Loc:1390  
Version 6.0 HiSQV Bases: 970

Inst Model/Name 3500/3500 Instrument  
Aug 17,2016 02:53PM, JST  
Aug 17,2016 03:19PM, JST  
Spacing:11.26 Pts/Panel1350  
Plate Name: 20160817\_mix



S/N G:548 A:519 T:553 C:675  
KB.bcp  
KB 1.4.1.8 Cap:12

Primer B: pOTB7-R  
5' GTACTGCAGCCGATTCATTAATGC 3'



S/N G:548 A:519 T:553 C:675  
KB.bcp  
KB 1.4.1.8 Cap:12

