

RIKEN clone ID: IRAL001105

Vector : pOTB7

Gene	CORO1C	
Accession No.	BC002342.2	2413 bp 1..2413
	<i>CDS</i>	1425 bp 82..1506

● Plasmid DNA purification

Date : 110829 Culture : LB (25 ug/ml Chloramphenicol) 10 ml →37°C O/N

Date : 110830 Purification : QIAGEN Miniprep kit→dH₂O 100 ul

● Digestion by restriction enzyme / Concentration calibration

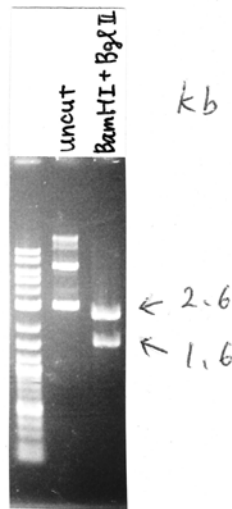
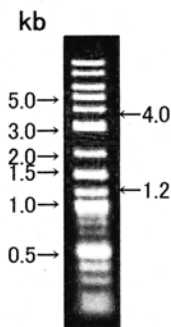
Date : 110830

DNA concentration (O.D.): 139 ng/ul

DNA	0.5 ul
Enzyme (BamHI+Bgl II)	0.5+0.5 ul
Buffer H	1 ul
dH ₂ O	7.5 ul
Total	10 ul

Electrophoresis: 1% agarose gel, 1 × TAE Buffer

Marker: 2-Log DNA Ladder (NEB#N3200L)



<Expected digestion pattern from BC002342.2>

1615, 2599 bp

● Adjust plasmid DNA solution to 25 ng/ul ~preparation for shipping~

Date : 110902 Shipped : 25 ng/ul, 40 ul

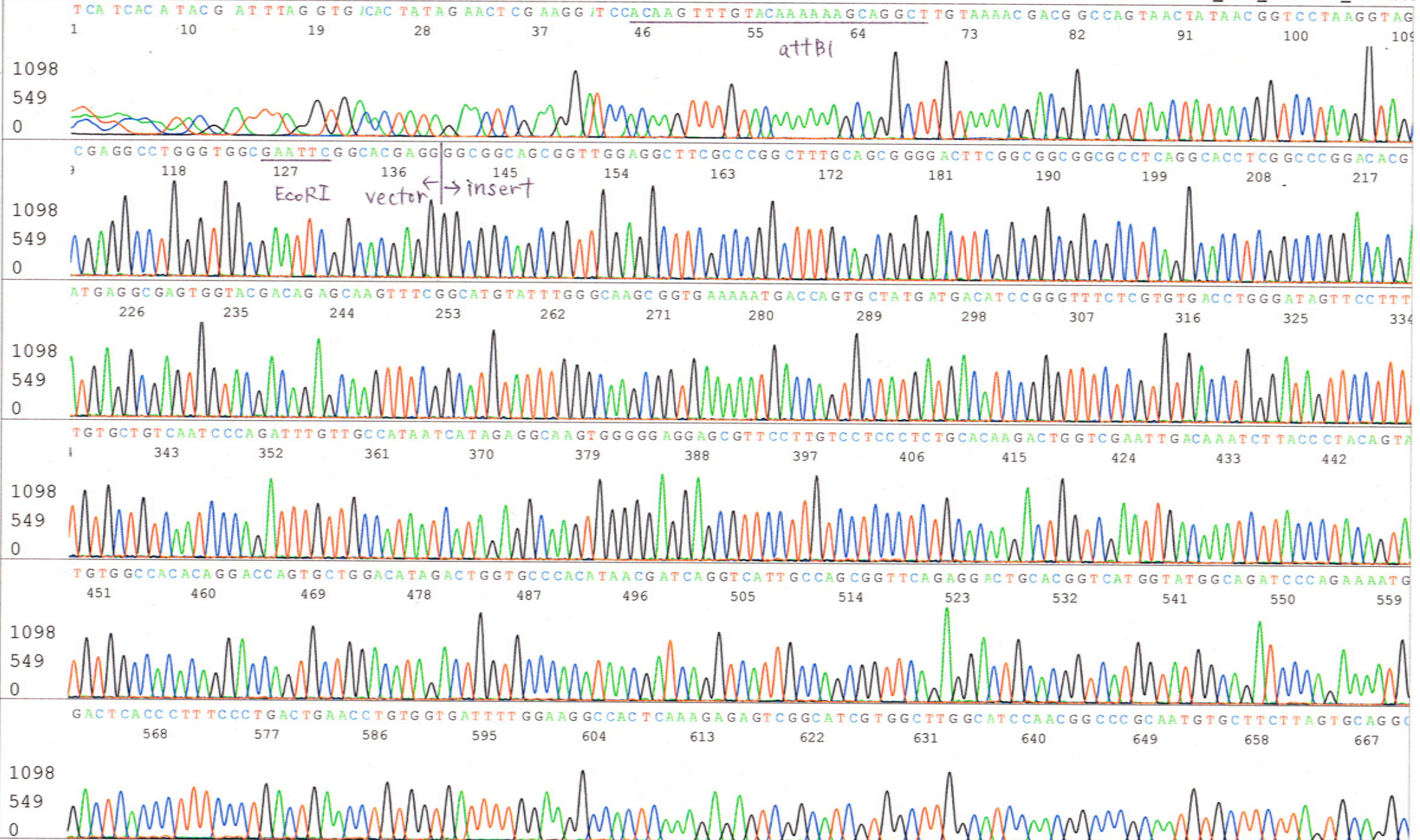
Final concentration: 25 ng/ul

DNA (<u>139</u> ng/ul)	85 ul
10 × TE	47.3 ul
dH ₂ O	340.3 ul
Total	472.6 ul

S/N G:486 A:320 T:290 C:257
KB.bcp
KB 1.4.1.8 Cap:8

IRAL001I05_pOTB7_F_C02
IRAL001I05_pOTB7_F
KB_3500_POP7_BDTv3.mob
Pts 1372 to 12453 Pk1 Loc:1349
Version 5.4 HiSQV Bases: 987

Inst Model/Name 3500/3500 Instrument
Sep 01,2001 01:38PM, JST
Sep 01,2001 02:16PM, JST
Spacing:11.08 Pts/Panel1350
Plate Name: 20110901_GNP_hakaikabu_BIOmass



S/N G:917 A:1043 T:938 C:593
KB.bcp
KB 1.4.1.8 Cap:14

IRAL001I05_GNP32_E02
IRAL001I05_GNP32
KB_3500_POP7_BDTv3.mob
Pts 1384 to 12415 Pk1 Loc:1361
Version 5.4 HiSQV Bases: 981

Inst Model/Name 3500/3500 Instrument
Sep 01,2001 01:38PM, JST
Sep 01,2001 02:16PM, JST
Spacing:11.01 Pts/Panel1350
Plate Name: 20110901_GNP_hakaikabu_BIOmass

