

RIKEN Clone ID : IRAL001G21

Lot#: 7566_B1Cf

Vector : pOTB7

Gene	COPB2	
Accession No.	BC000326.2	3088 bp
	<i>CDS</i>	2721 bp

● Plasmid DNA purification

Date : 21.03.17

Culture : LB (25 ug/ml Chloramphenicol) 5 ml -> at 37 deg C over night

Date : 21.03.18

Purification : QIAGEN Miniprep kit -> dH₂O 100 ul

● Digestion by restriction enzyme/Concentration calibration

Date : 21.03.18

DNA concentration (O.D.): 207 ng/ul

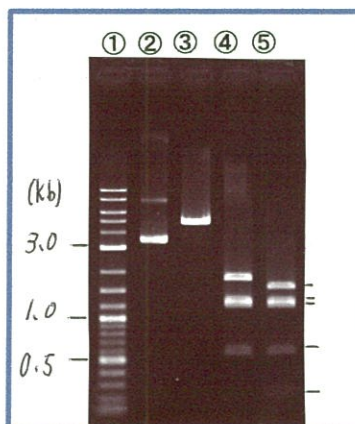
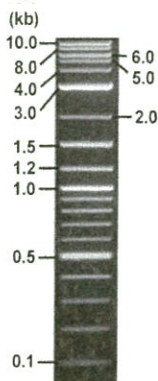
< Size of fragment expected from this clone >

DNA	0.5 ul
Enzyme (BamHI + BglII)	0.5 + 0.5 ul
Buffer H	1 ul
dH ₂ O	7.5 ul
Total	10 ul

BamHI	4.9 kb
BglII	1.8, 1.3, 1.2, 0.6 kb
BamHI + BglII	1.6kb (Vector) 1.3, 1.2, 0.6, 0.2 kb

Erectrophoresis : 1% agarose gel, 1x TAE Buffer

Marker : 2-Log DNA Ladder (NEB#N3200L)



①:Marker
②:uncut
③:BamHI
④:BglII
⑤:BamHI + BglII

● Adjust plasmid DNA solution to 25 ng/ul

Date : 21.03.25

DNA (207 ng/ul)	85.0 ul
10x TE	70.3 ul
dH ₂ O	548.5 ul
Total	703.8 ul

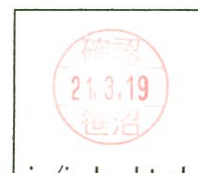
● Confirmation of the insertion sequence

Date : 21.03.19

Primer A	pOTB7_F
Primer B	pOTB7_R
Primer C	-
List of Sequencing Primers	http://dna.brc.riken.jp/en/GNPclone3en.html

● Shipping

Conc. : 25 ng/ul, Volume : 40 ul
 Conc. : ~~ng/ul~~, Volume : ~~ul~~



APPROVED BY : <http://dna.brc.riken.jp/index.html>

S/N G:25 A:30 T:20 C:25

Primer A: pOTB7-F

7566_IRAL001G21_B1Cf_2_pOTB7_F

KB_3500_POP7_BDTv3.mob

Gray line indicates quality value

Mar 19,2021 12:16PM, JST

KB.bcp

Pts 1858 to 8704 Pk1 Loc:1826

Mar 19,2021 12:32PM, JST

KB 1.4.1.8 Cap:4

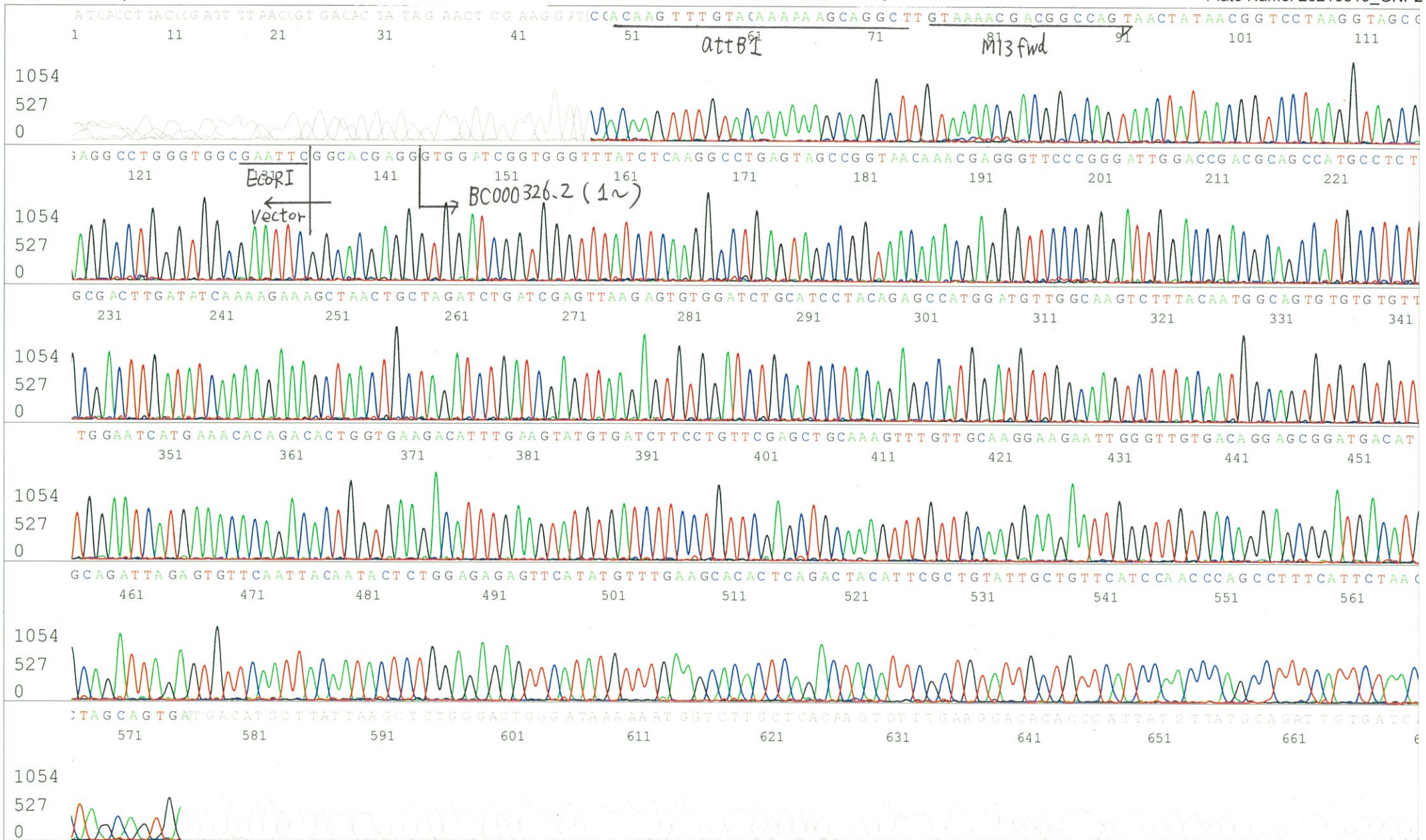
5' AACGCGGCTACAATTAATACATAACC 3'

Version 6.0 HiSQV Bases: 646

(QV) < 40.

Spacing:10.74 Pts/Panel1350

Plate Name: 20210319_GNP2



S/N G:66 A:103 T:82 C:96

Primer B: pOTB7-R

7566_IRAL001G21_B1Cf_2_pOTB7_R

Mar 19,2021 10:01AM, JST

KB.bcp

KB_3500_POP7_BDTv3.mob

Gray line indicates quality value

Mar 19,2021 10:17AM, JST

KB 1.4.1.8 Cap:5

5' GTACTGCAGCCGATTCATTAATGC 3'

Pts 1847 to 8704 Pk1 Loc:1815

(QV) < 40.

Spacing:10.69 Pts/Panel1350

Plate Name: 20210319_GNP

