

RIKEN Clone ID : IRAL001B16

Lot#: 7566_A5Kp

Vector : pOTB7

Gene	RBM14	
Accession No.	BC000488.2	2844 bp
	<i>CDS</i>	2010 bp

● Plasmid DNA purification

Date : 15/1/25

Culture : LB (25 ug/ml Chloramphenicol) 5 ml → at 37 deg C over night

Date : 15/2/01

Purification : QIAGEN Miniprep kit → dH₂O 100 ul

● Digestion by restriction enzyme/Concentration calibration

Date : 15/2/01

DNA concentration (O.D.): 230 ng/ul

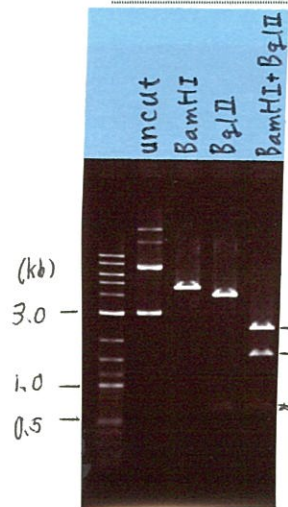
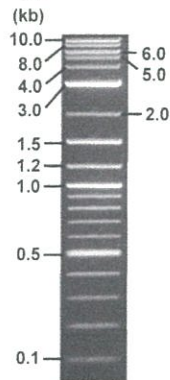
< Size of fragment expected from this clone >

DNA	0.4	ul
Enzyme (BamHI + BglII)	0.5 + 0.5	ul
Buffer H	1	ul
dH ₂ O	7.6	ul
Total	10	ul

BamHI	4.6	kb
BglII	4.0, 0.64	kb
BamHI + BglII	1.6kb (Vector)	2.4, 0.64

Electrophoresis : 1% agarose gel, 1x TAE Buffer

Marker : 2-Log DNA Ladder (NEB#N3200L)



● Adjust plasmid DNA solution to 25 ng/ul

Date : 15/2/04

● Confirmation of the insertion sequence

Date : 15/2/03

DNA (230 ng/ul)	85.0	ul
10x TE	78.2	ul
dH ₂ O	618.8	ul
Total	782.0	ul

Primer A	pOTB7_F
Primer B	pOTB7_R
Primer C	poly(A) region primer #0
List of Sequencing Primers	http://dna.brc.riken.jp/en/GNPclone3en.html

● Shipping

Conc. : 25 ng/ul, Volume : 40 ul

Conc. : _____ ng/ul, Volume : _____ ul

APPROVED BY :

<http://dna.brc.riken.jp/index.html>

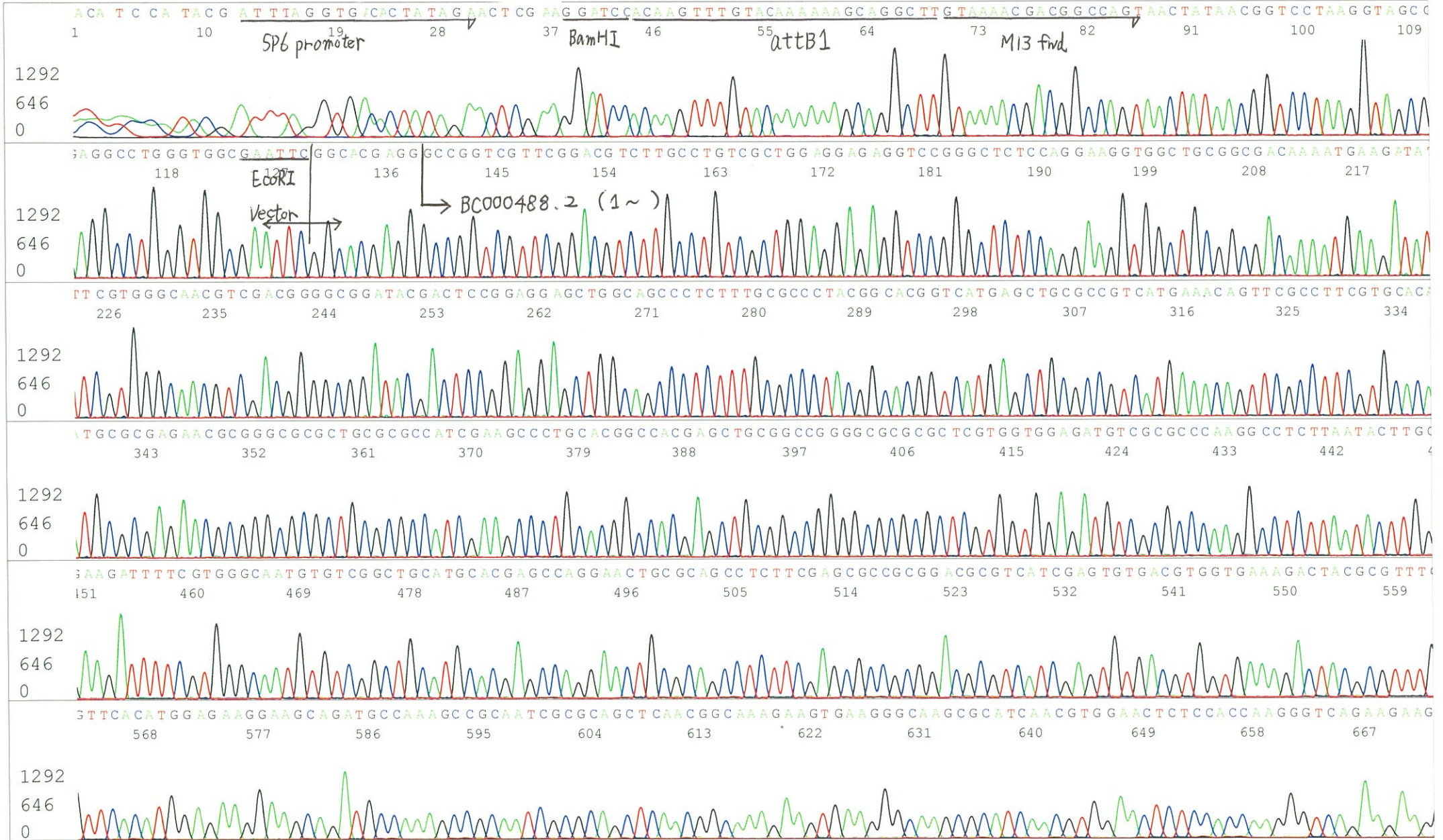


S/N G:887 A:592 T:563 C:835
KB.bcp
KB 1.4.1.8 Cap:1

Primer A: pOTB7-F
5' AACGCGGCTACAATTAATACATAACC 3'

IRAL001B06_A5Kp_pOTB7_F_A04_01
IRAL001B06_A5Kp_pOTB7_F
KB_3500_POP7_BDTv3.mob
Pts 1381 to 13004 PK1 Loc:1358
Version 6.0 HiSQV Bases: 1014

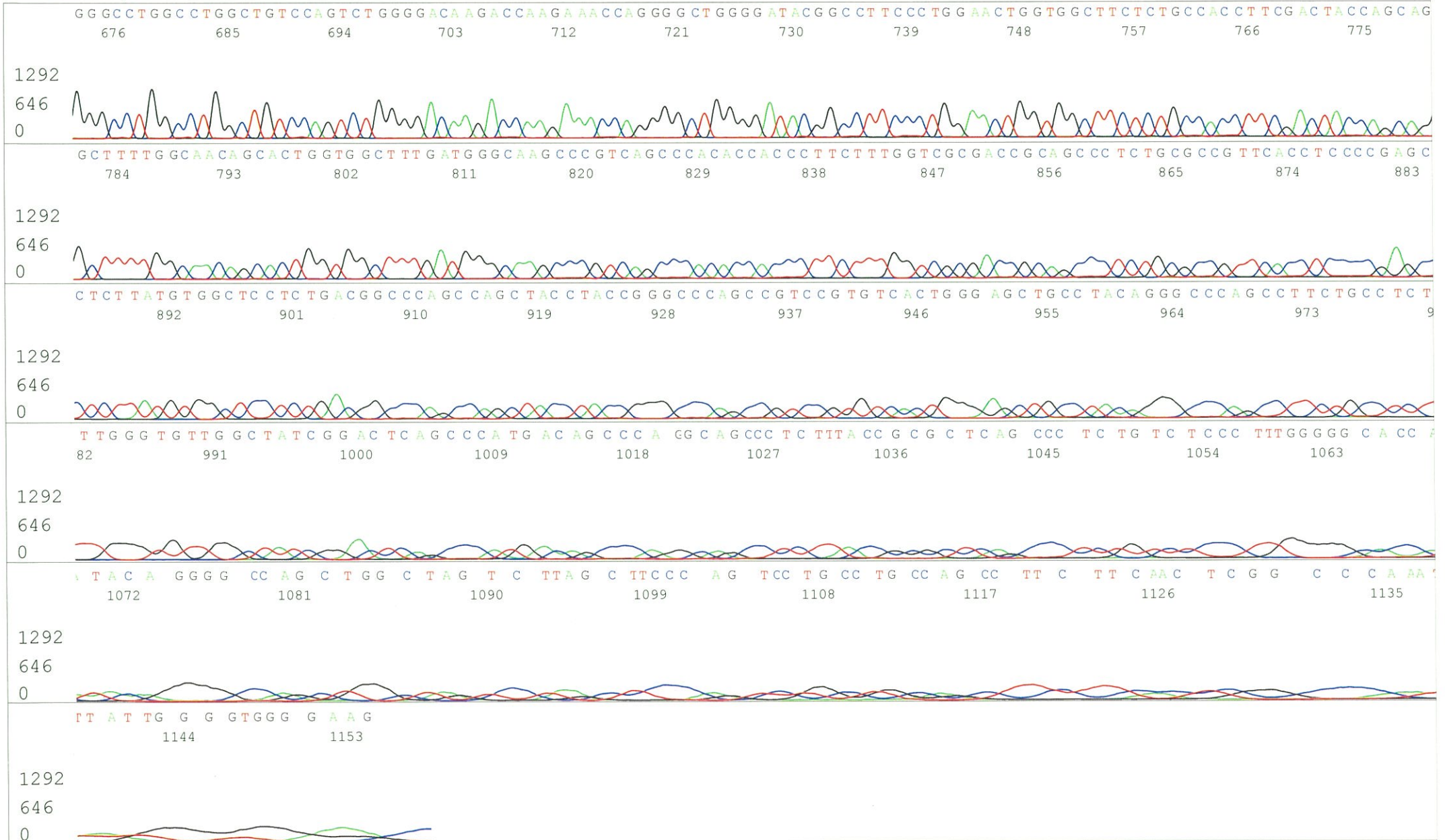
Inst Model/Name 3500/3500 Instrument
Dec 02,2015 11:51AM, JST
Dec 02,2015 12:16PM, JST
Spacing:11.59 Pts/Panel1350
Plate Name: 20151202_mix



S/N G:887 A:592 T:563 C:835
KB.bcp
KB 1.4.1.8 Cap:1

IRAL001B06_A5Kp_pOTB7_F_A04_01
IRAL001B06_A5Kp_pOTB7_F
KB_3500_POP7_BDTv3.mob
Pts 1381 to 13004 Pk1 Loc:1358
Version 6.0 HiSQV Bases: 1014

Inst Model/Name 3500/3500 Instrument
Dec 02,2015 11:51AM, JST
Dec 02,2015 12:16PM, JST
Spacing:11.59 Pts/Panel1350
Plate Name: 20151202_mix

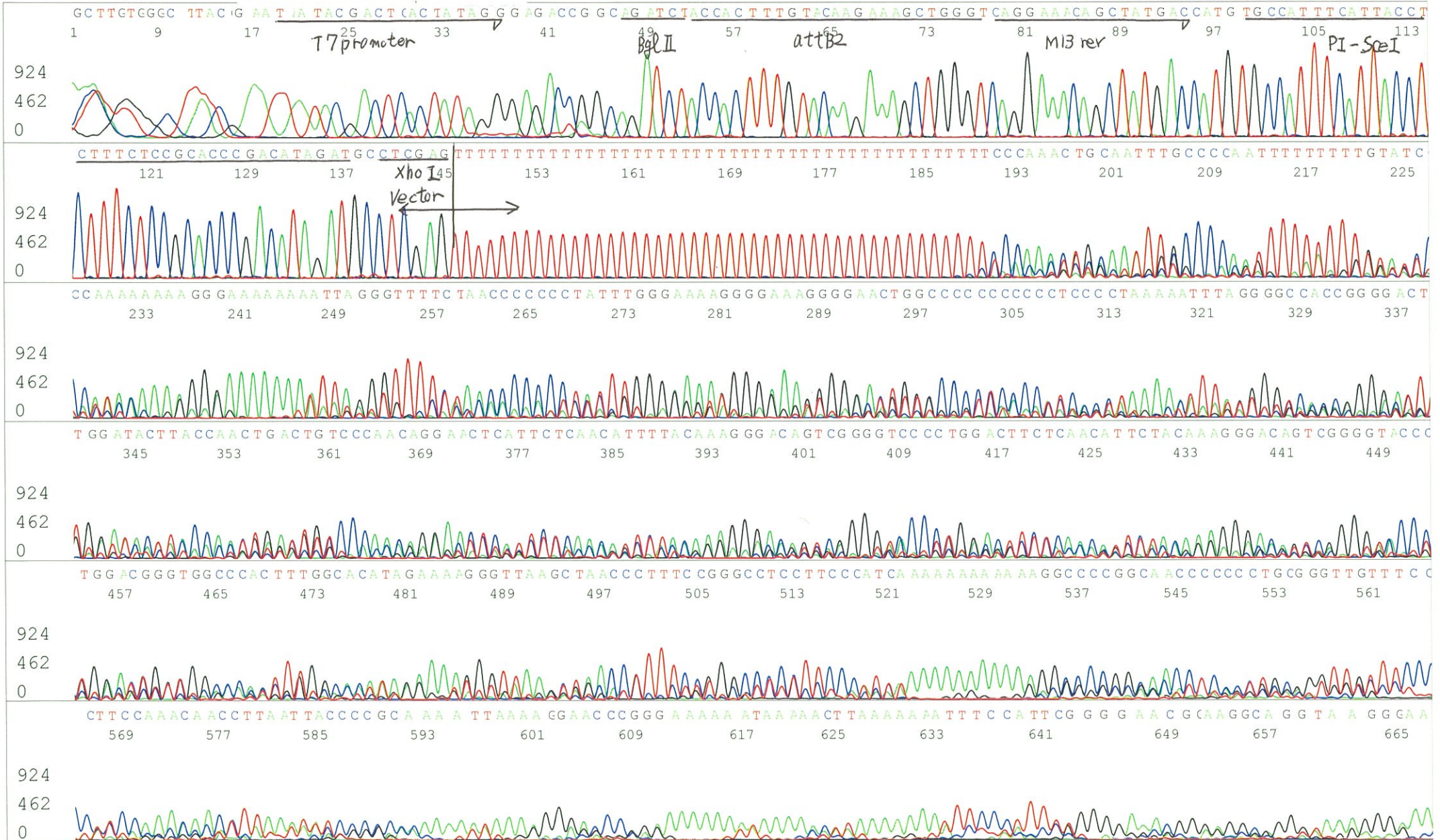


S/N G:79 A:78 T:75 C:73
KB.bcp
KB 1.4.1.8 Cap:4

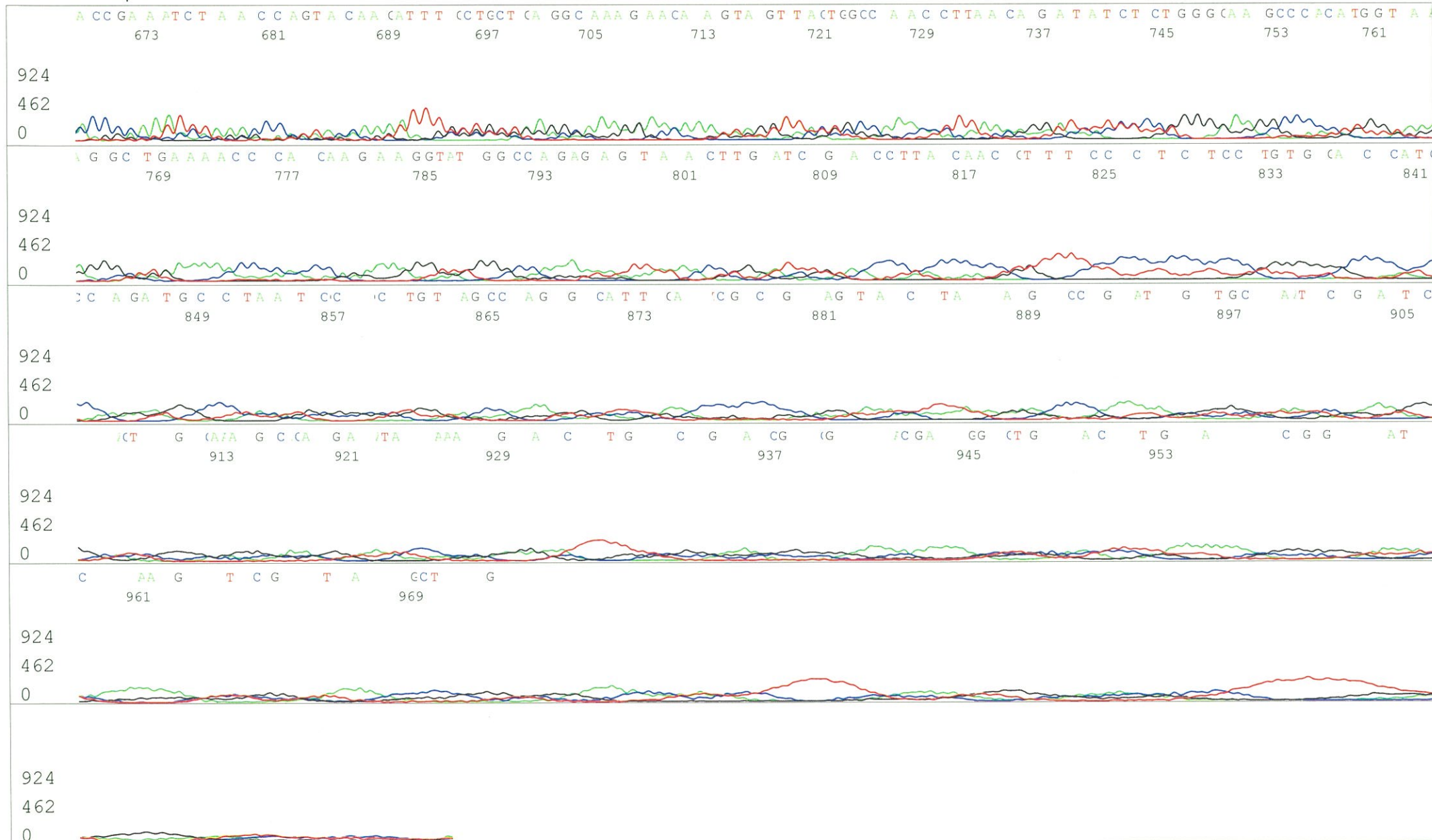
Primer B: pOTB7-R
5' GTACTGCAGCCGATTCATTAATGC 3'

IRAL001B06_A5Kp_pOTB7_R_B04_04
IRAL001B06_A5Kp_pOTB7_R
KB_3500_POP7_BDTv3.mob
Pts 1379 to 12986 Pk1 Loc:1356
Version 6.0 HiSQV Bases: 271

Inst Model/Name 3500/3500 Instrument
Dec 02,2015 11:51AM, JST
Dec 02,2015 12:16PM, JST
Spacing:11.62 Pts/Panel1350
Plate Name: 20151202_mix

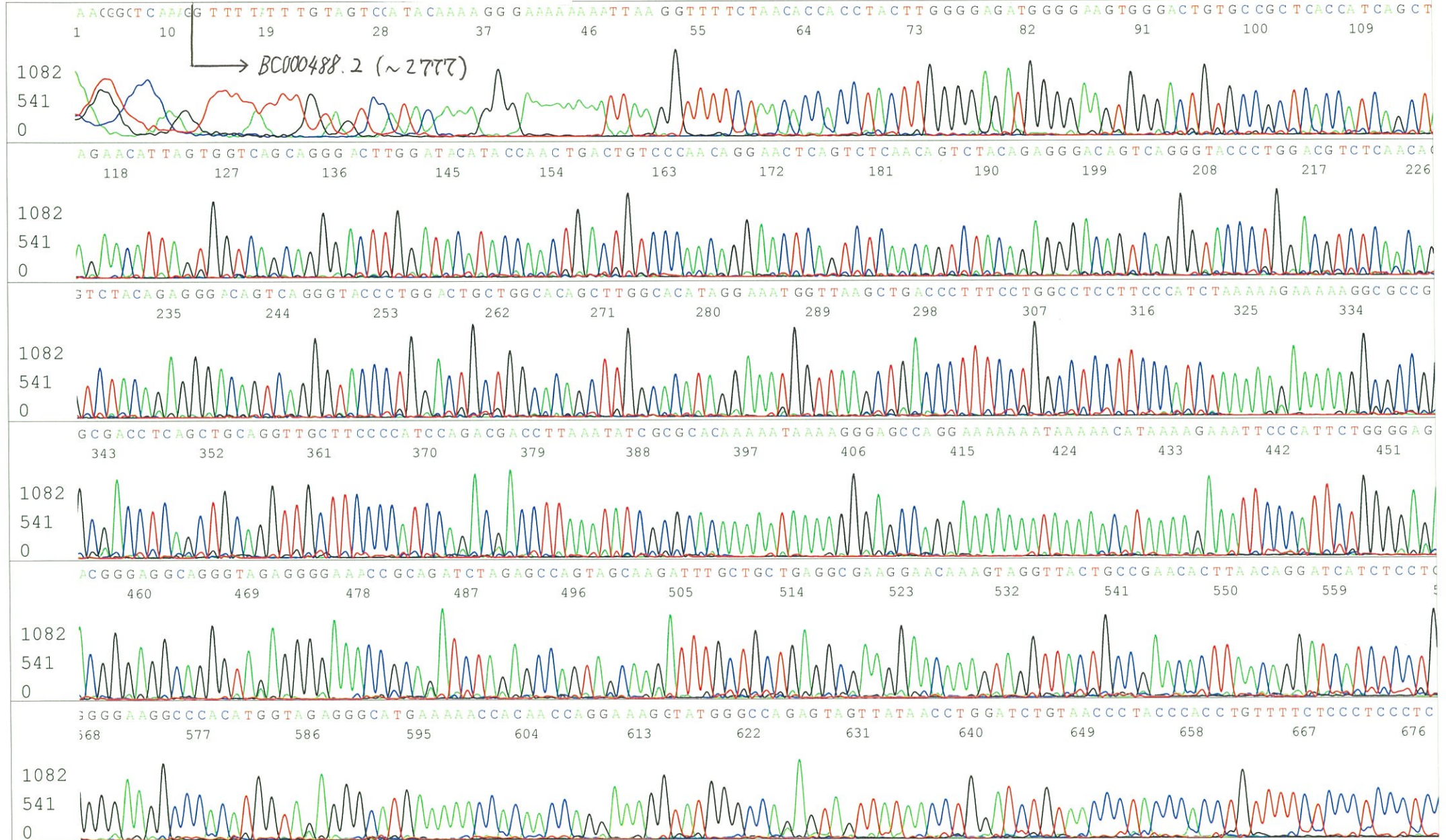


S/N G:79 A:78 T:75 C:73
KB.bcp
KB 1.4.1.8 Cap:4



S/N G:50 A:52 T:33 C:39
KB.bcp
KB 1.4.1.8 Cap:10

Primer C : Poly(A) region primer #0
5' TTTTTTTTTTTTTTTTTTTTTTNNN 3'



S/N G:50 A:52 T:33 C:39
KB.bcp
KB 1.4.1.8 Cap:10

