

RIKEN Clone ID : IRAL001B09

Lot#: 7566_A6Ap

Vector : pOTB7

Gene	RUVBL2	
Accession No.	BC000428.2	1499 bp
	<i>CDS</i>	1392 bp

● Plasmid DNA purification

Date : 160126

Culture : LB (25 ug/ml Chloramphenicol) 5 ml → at 37 deg C over night

Date : 160127

Purification : QIAGEN Miniprep kit → dH₂O 100 ul

● Digestion by restriction enzyme/Concentration calibration

Date : 160127

DNA concentration (O.D.): 93 ng/ul

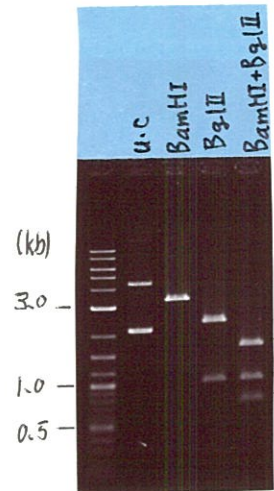
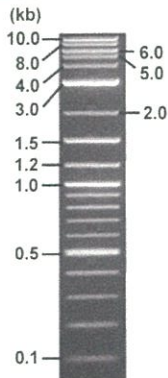
< Size of fragment expected from this clone >

DNA	1	ul
Enzyme (BamHI + BglII)	0.5 + 0.5	ul
Buffer H	1	ul
dH ₂ O	7	ul
Total	10	ul

BamHI	3.3 kb	
BglII	2.3 kb	0.99 kb
BamHI + BglII	1.6kb (Vector)	0.99, 0.70 kb

Electrophoresis : 1% agarose gel, 1x TAE Buffer

Marker : 2-Log DNA Ladder (NEB#N3200L)



● Adjust plasmid DNA solution to 25 ng/ul

Date : 160201

DNA (<u>93</u> ng/ul)	<u>82.0</u>	ul
10x TE	<u>30.5</u>	ul
dH ₂ O	<u>192.5</u>	ul
Total	<u>305.0</u>	ul

● Confirmation of the insertion sequence

Date : 160129

Primer A	pOTB7_F
Primer B	pOTB7_R
Primer C	-
List of Sequencing Primers	http://dna.brc.riken.jp/en/GNPclone3en.html

● Shipping

Conc. : 25 ng/ul, Volume : 40 ul

Conc. : ng/ul, Volume : ul

APPROVED BY :

<http://dna.brc.riken.jp/index.html>

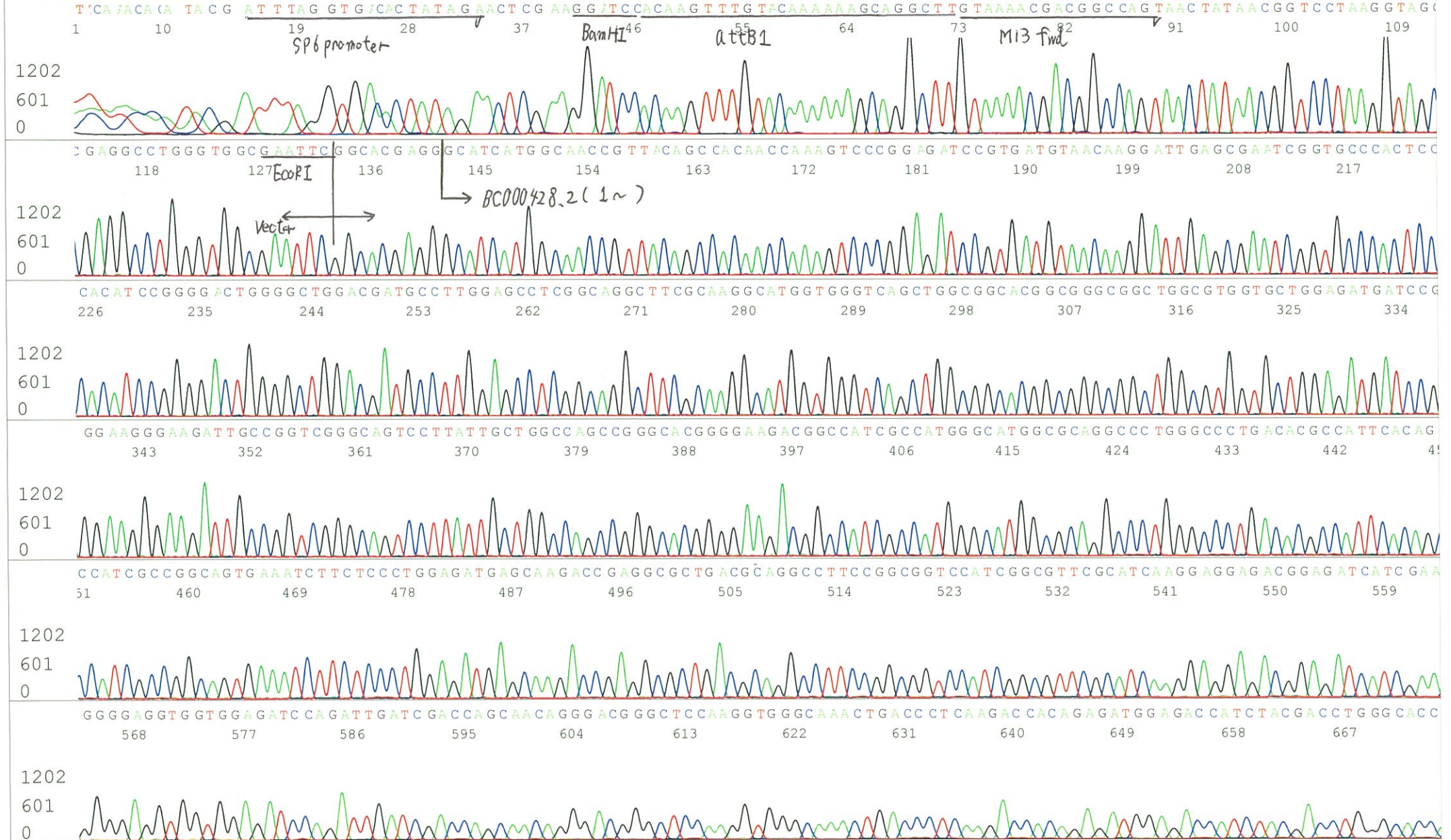


S/N G:270 A:223 T:148 C:178
KB.bcp
KB 1.4.1.8 Cap:2

Primer A: pOTB7-F
5' AACGCGGCTACAATTAATACATAACC 3'

IRAL001B09_A6Ap_pOTB7_F_A08_02
IRAL001B09_A6Ap_pOTB7_F
KB_3500_POP7_BDTv3.mob
Pts 1414 to 13262 PK1 Loc:1391
Version 6.0 HiSQV Bases: 984

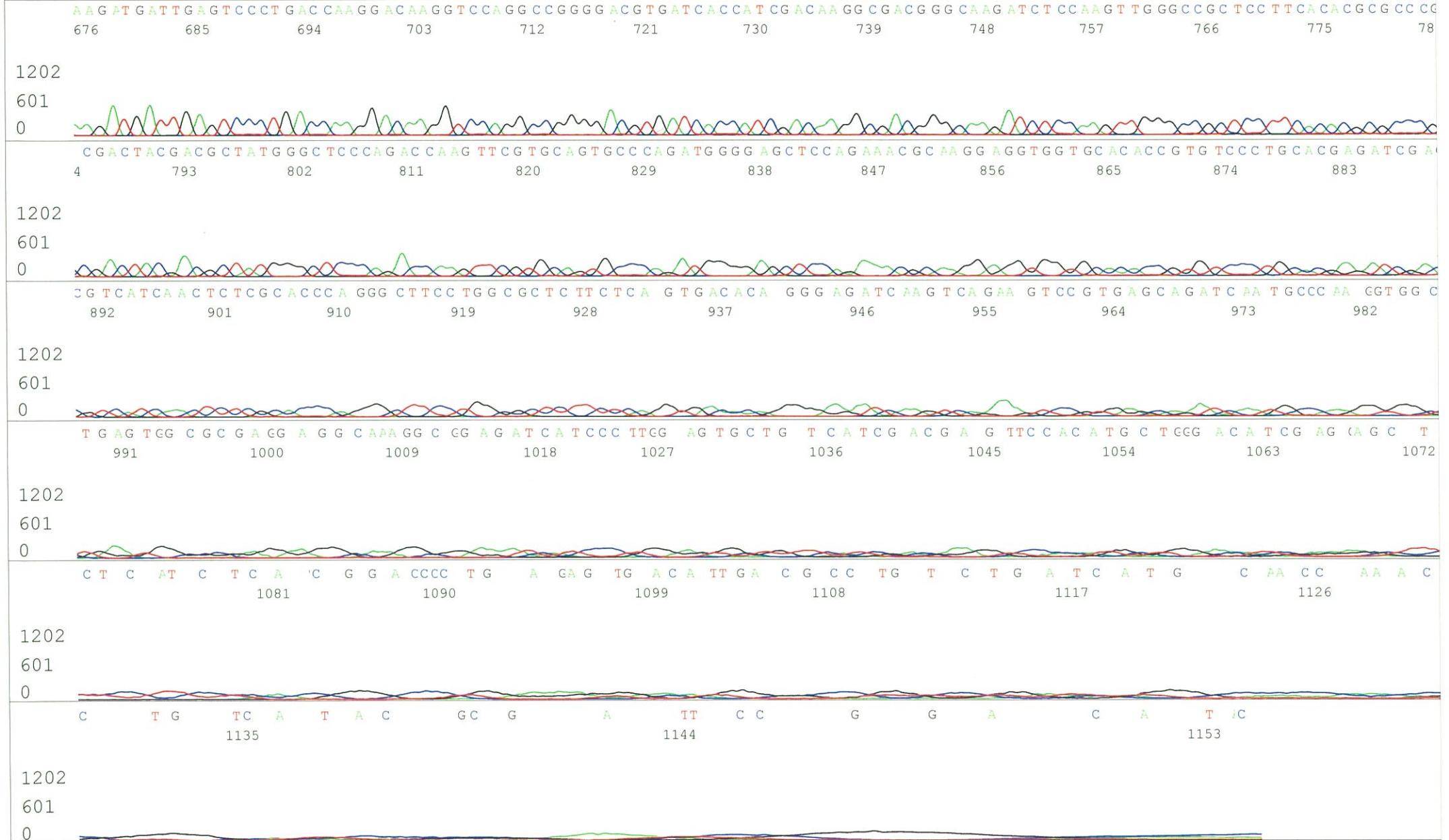
Inst Model/Name 3500/3500 Instrument
Jan 29,2016 09:59AM, JST
Jan 29,2016 10:24AM, JST
Spacing:11.72 Pts/Panel1350
Plate Name: 20160129_mix



S/N G:270 A:223 T:148 C:178
KB.bcp
KB 1.4.1.8 Cap:2

IRAL001B09_A6Ap_pOTB7_F_A08_02
IRAL001B09_A6Ap_pOTB7_F
KB_3500_POP7_BDTv3.mob
Pts 1414 to 13262 Pk1 Loc:1391
Version 6.0 HiSQV Bases: 984

Inst Model/Name 3500/3500 Instrument
Jan 29,2016 09:59AM, JST
Jan 29,2016 10:24AM, JST
Spacing:11.72 Pts/Panel1350
Plate Name: 20160129_mix

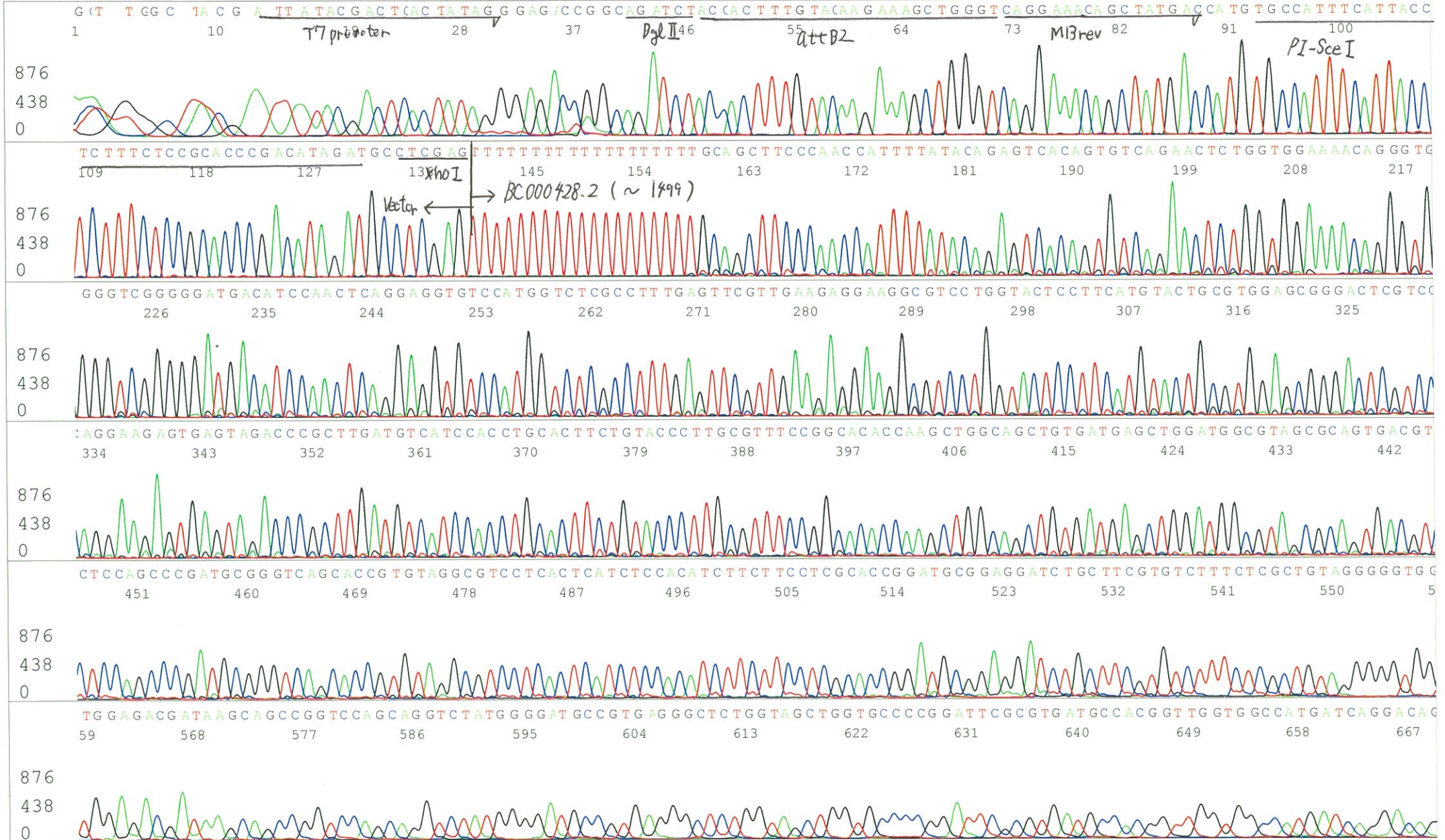


S/N G:772 A:647 T:549 C:540
 KB.bcp
 KB 1.4.1.8 Cap:5

Primer B: pOTB7-R
 5' GTACTGCAGCCGATTCATTAATGC 3'

IRAL001B09_A6Ap_pOTB7_R_B08_05
 IRAL001B09_A6Ap_pOTB7_R
 KB_3500_POP7_BDTv3.mob
 Pts 1424 to 13205 Pk1 Loc:1401
 Version 6.0 HiSQV Bases: 840

Inst Model/Name 3500/3500 Instrument
 Jan 29,2016 09:59AM, JST
 Jan 29,2016 10:24AM, JST
 Spacing:11.6 Pts/Panel1350
 Plate Name: 20160129_mix



S/N G:772 A:647 T:549 C:540
KB.bcp
KB 1.4.1.8 Cap:5

