

RIKEN Clone ID : IRAK168C04

Vector : pBluescriptR

Gene	CLDN12	
Accession No.	BC068532.1	3585 bp
	<i>CDS</i>	735 bp

● Plasmid DNA purification

Date : 170807

Culture : LB (100 ug/ml Ampicillin) 5 ml -> at 37 deg C over night

Date : 170808

Purification : QIAGEN Miniprep kit -> dH₂O 100 ul

● Digestion by restriction enzyme/Concentration calibration

Date : 170808

DNA concentration (O.D.): 153 ng/ul

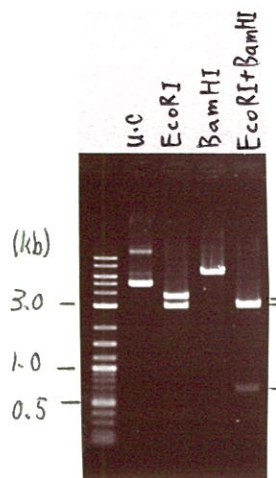
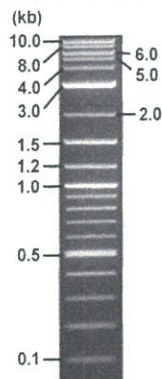
< Size of fragment expected from this clone >

DNA	0.6	ul
Enzyme (EcoRI + BamHI)	0.5 + 0.5	ul
Buffer H	1	ul
dH ₂ O	7.4	ul
Total	10	ul

EcoRI	3.5 , 2.9	kb
BamHI	6.4	kb
EcoRI + BamHI	2.8kb (Vector)	2.9, 0.7

Electrophoresis : 1% agarose gel, 1x TAE Buffer

Marker : 2-Log DNA Ladder (NEB#N3200L)



● Adjust plasmid DNA solution to 25 ng/ul

Date : 170821

DNA (<u>153</u> ng/ul)	86.0	ul
10x TE	52.6	ul
dH ₂ O	387.7	ul
Total	526.3	ul

● Confirmation of the insertion sequence

Date : 170817

Primer A	T7
Primer B	Reverse2
Primer C	poly(A) region primer #0
List of Sequencing Primers	http://dna.brc.riken.jp/en/GNPclone3en.html

● Shipping

Conc. : 25 ng/ul, Volume : 40 ul
 Conc. : ng/ul, Volume : ul

APPROVED BY : <http://dna.brc.riken.jp/index.html>



S/N G:73 A:70 T:68 C:103
KB.bcp
KB 1.4.1.8 Cap:6

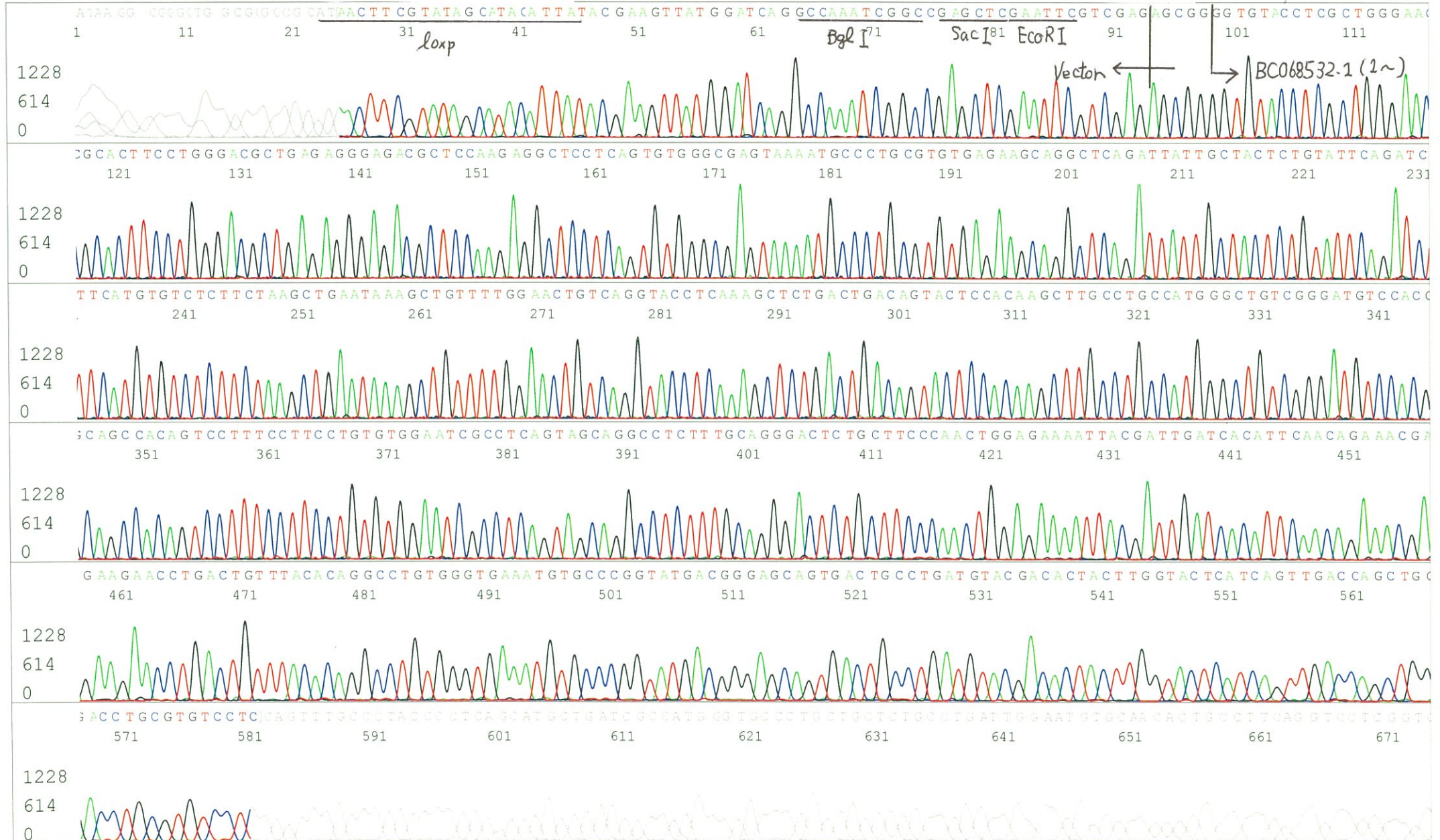
Primer A : T7

5' TAATACGACTCACTATAGGG 3'

IRAK168C04_A7H3_T7_F08_06_ABI08
IRAK168C04_A7H3_T7
KB_3500_POP7_BDTv3.mob
Pts 1675 to 8552 Pk1 Loc:1643
Version 6.0 HiSQV Bases: 709

Gray line indicates quality value
(QV) < 40.

Inst Model/Name 3500/3500 Instrument
Aug 17,2017 08:54PM, JST
Aug 17,2017 09:08PM, JST
Spacing:10.51 Pts/Panel1350
ate Name: 20170817_MGE_GNP



S/N G:67 A:92 T:97 C:94
 KB.bcp
 KB 1.4.1.8 Cap:7

Primer B : Reverse2
 5' GCGGATAACAATTTTCACACAGG 3'

Gray line indicates quality value
 (QV) < 40.

