

RIKEN Clone ID : IRAK135K22

Lot#: 7893_A7De

Vector : pCMV-SPORT6

Gene	NR2F6	
Accession No.	BC063018.1	1783 bp
	<i>CDS</i>	1215 bp

● Plasmid DNA purification

Date : 170417

Culture : LB (100 ug/ml Ampicillin) 5 ml -> at 37 deg C over night

Date : 170418

Purification : QIAGEN Miniprep kit -> dH₂O 100 ul

● Digestion by restriction enzyme/Concentration calibration

Date : 170418

DNA concentration (O.D.): 107 ng/ul

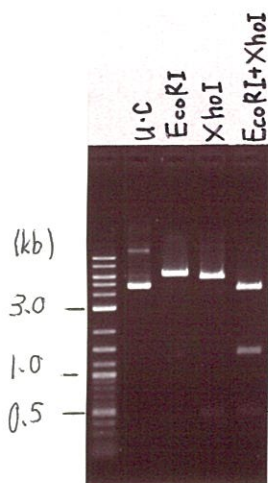
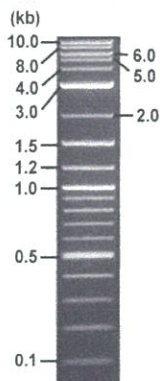
< Size of fragment expected from this clone >

DNA	0.8	ul
Enzyme (EcoRI + XhoI)	0.5 + 0.5	ul
Buffer H	1	ul
dH ₂ O	7.2	ul
Total	10	ul

EcoRI	6.2	kb
XhoI	5.7, 0.46	kb
EcoRI + XhoI	4.3kb (Vector)	1.4, 0.46

Erectrophoresis : 1% agarose gel, 1x TAE Buffer

Marker : 2-Log DNA Ladder (NEB#N3200L)



● Adjust plasmid DNA solution to 25 ng/ul

Date : 170419

● Confirmation of the insertion sequence

Date : 170419

DNA (<u>107</u> ng/ul)	82.0	ul
10x TE	35.0	ul
dH ₂ O	233.9	ul
Total	350.9	ul

Primer A	Reverse2
Primer B	M13
Primer C	poly(A) region primer #0
List of Sequencing Primers	http://dna.brc.riken.jp/en/GNPclone3en.html

● Shipping

Conc. : 25 ng/μl, Volume : 40 μl
 Conc. : ~~ng/μl~~, Volume : ~~μl~~



APPROVED BY : <http://dna.brc.riken.jp/index.html>

S/N G:238 A:207 T:180 C:402

Primer A : Reverse2

IRAK135K22_A7De_Reverse2

Apr 19,2017 10:19AM, JST

KB.bcp

KB_3500_POP7_BDTv3.mob

Apr 19,2017 10:46AM, JST

KB 1.4.1.8 Cap:7

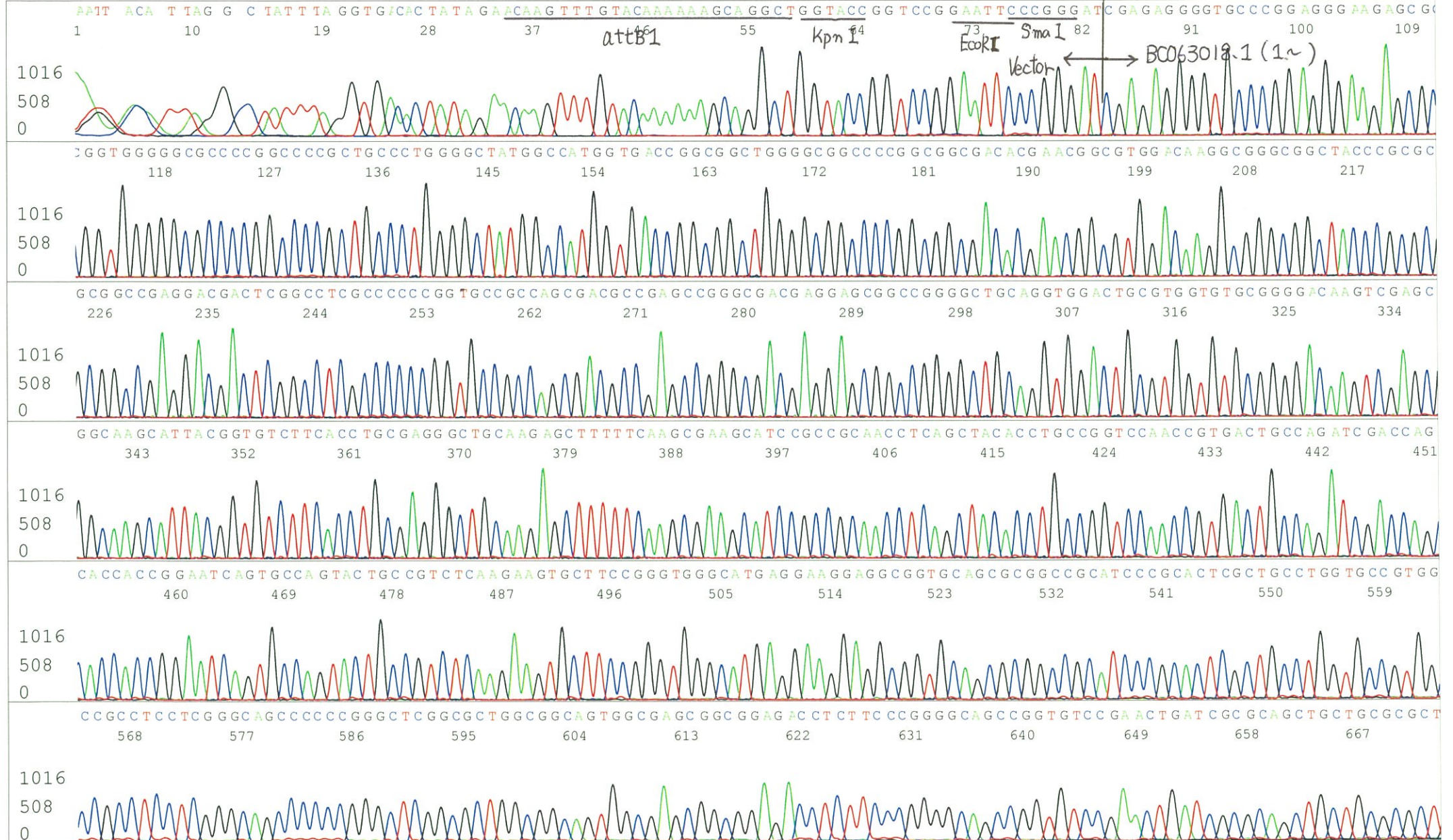
5' GCGGATAACAATTTACACACAGG 3'

Pts 1467 to 13856 Pk1 Loc:1444

Spacing:12.29 Pts/Panel1350

Version 6.0 HiSQV Bases: 1009

Plate Name: 20170419_GNP



S/N G:238 A:207 T:180 C:402
KB.bcp
KB 1.4.1.8 Cap:7



S/N G:103 A:108 T:102 C:168

Primer B : M13

IRAK135K22_A7De_M13(-40)

Apr 19,2017 10:19AM, JST

KB.bcp

KB_3500_POP7_BDTv3.mob

Apr 19,2017 10:46AM, JST

KB 1.4.1.8 Cap:10

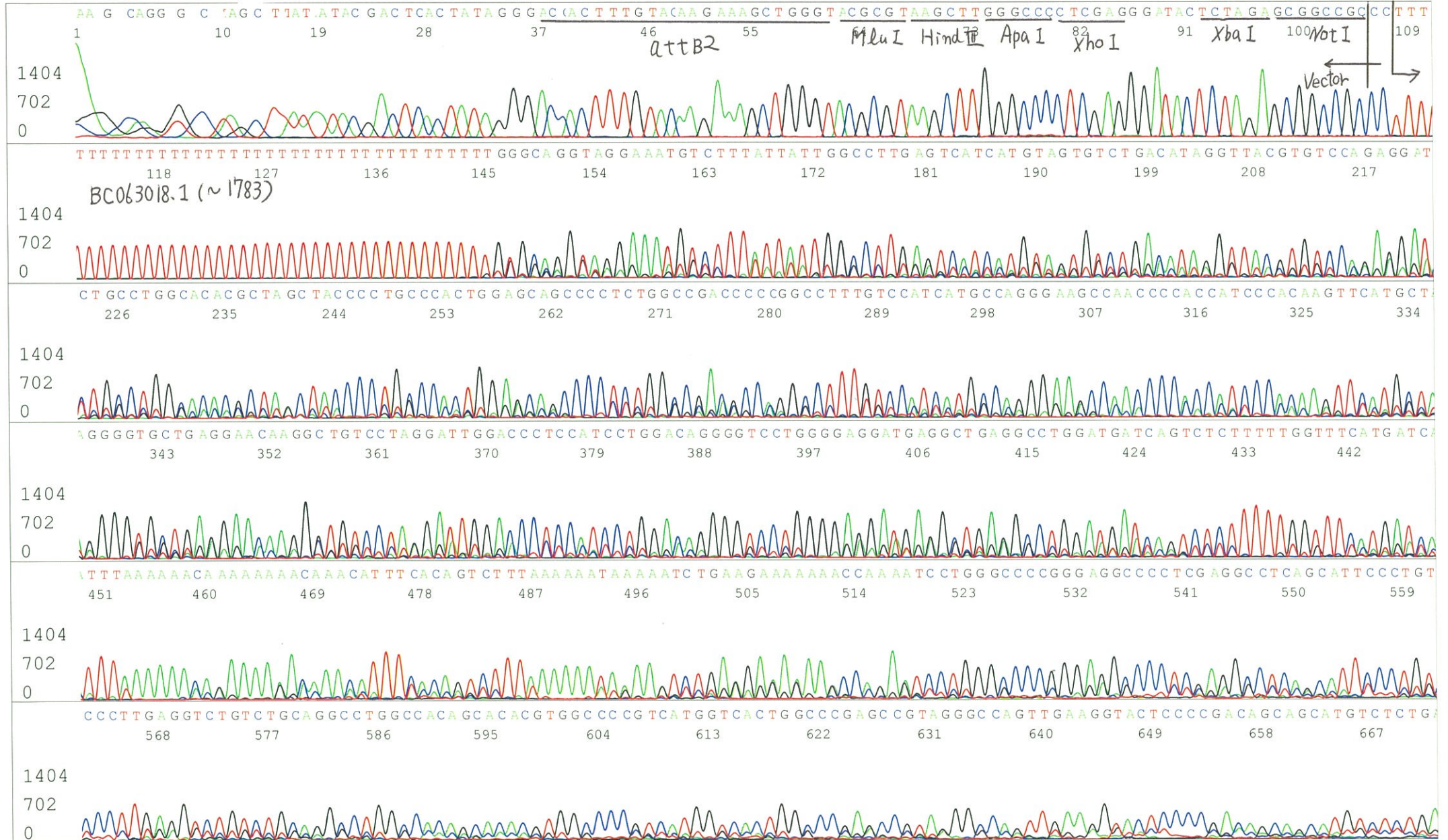
5' GTTTTCCCAGTCACGACGTTGTA 3'

Pts 1474 to 13904 Pk1 Loc:1451

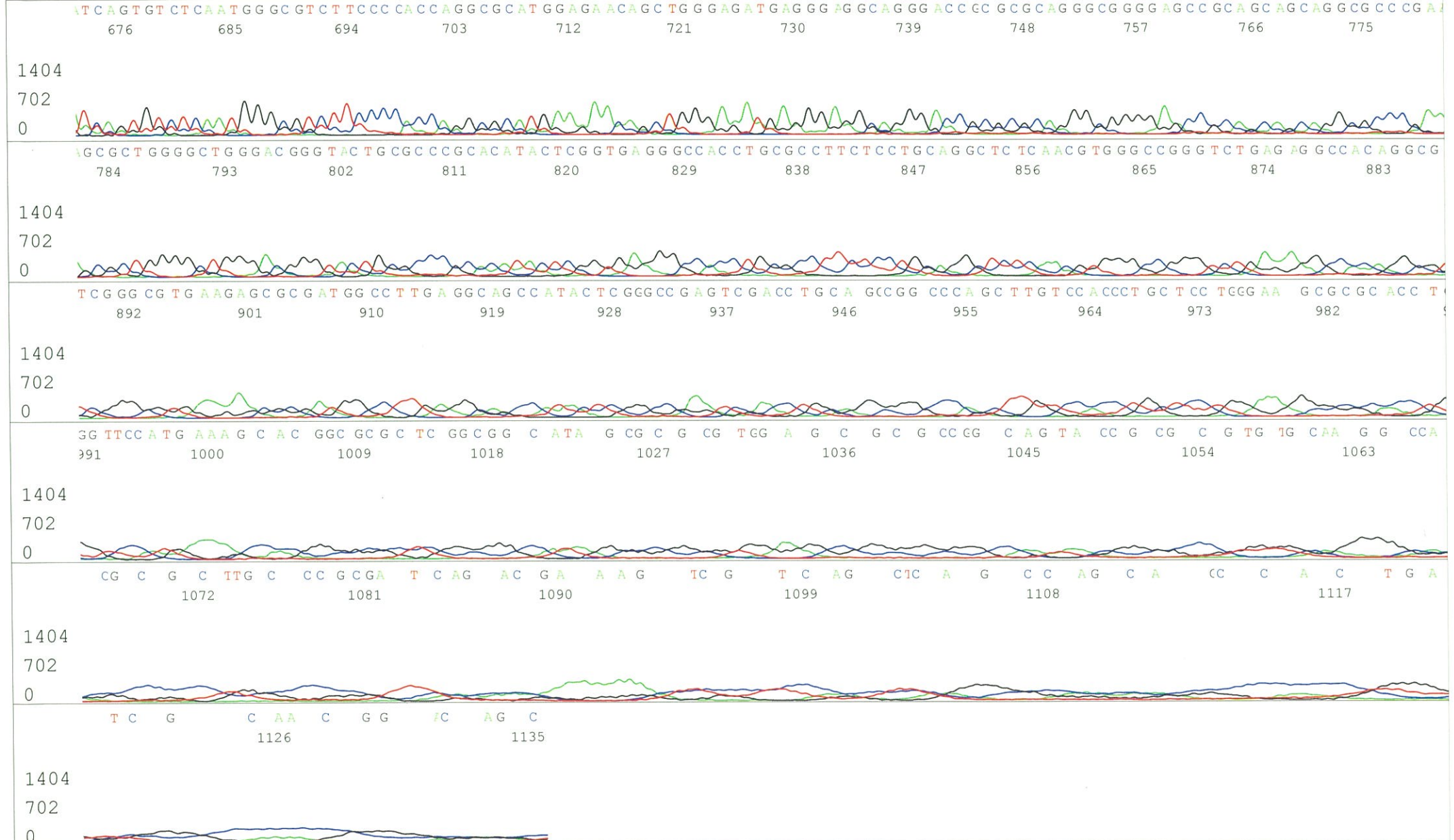
Spacing:12.36 Pts/Panel1350

Version 6.0 HiSQV Bases: 761

Plate Name: 20170419_GNP

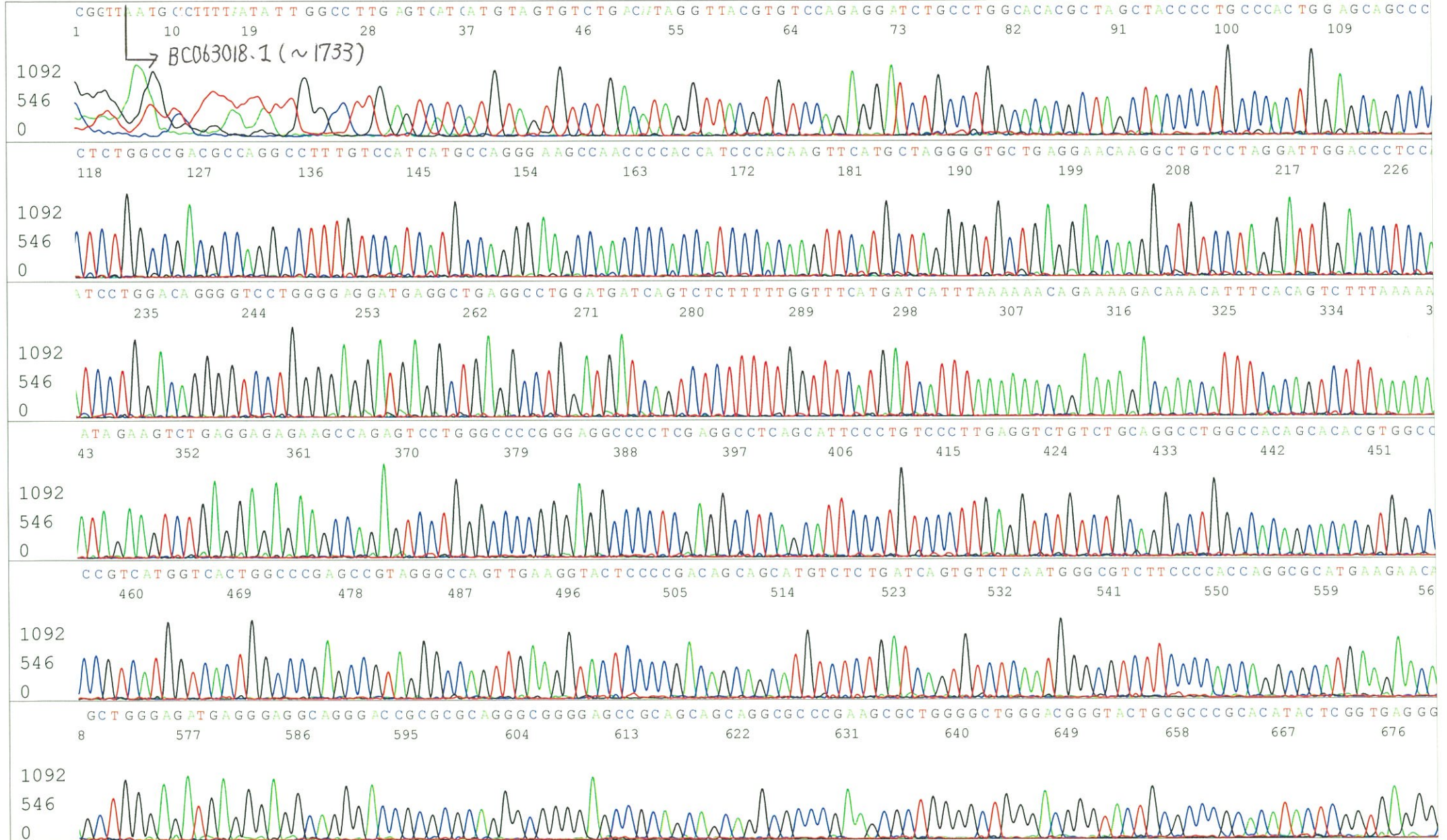


S/N G:103 A:108 T:102 C:168
KB.bcp
KB 1.4.1.8 Cap:10



S/N G:36 A:30 T:28 C:47
KB.bcp
KB 1.4.1.8 Cap:13

Primer C : Poly(A) region primer #0
5' TTTTTTTTTTTTTTTTTTTTTNNN 3'



S/N G:36 A:30 T:28 C:47

IRAK135K22_A7De_GNPmixture

Apr 19,2017 10:19AM, JST

KB.bcp

KB_3500_POP7_BDTv3.mob

Apr 19,2017 10:46AM, JST

KB 1.4.1.8 Cap:13

Pts 1488 to 14135 Pk1 Loc:1465

Spacing:12.28 Pts/Panel1350

Version 6.0 HiSQV Bases: 1015

Plate Name: 20170419_GNP

