

RIKEN Clone ID : IRAK110I19

Lot#: 7893_B0D3

Vector : pCMV-SPORT6

Gene	GALNS	
Accession No.	BC050684.1	2417 bp
	CDS	1569 bp

● Plasmid DNA purification

Date : 20.04.06

Culture : LB (100 ug/ml Ampicillin) 5 ml → at 37 deg C over night

Date : 20.06.10

Purification : QIAGEN Miniprep kit → dH₂O 100 ul

● Digestion by restriction enzyme/Concentration calibration

Date : 20.06.10

DNA concentration (O.D.): 235 ng/ul

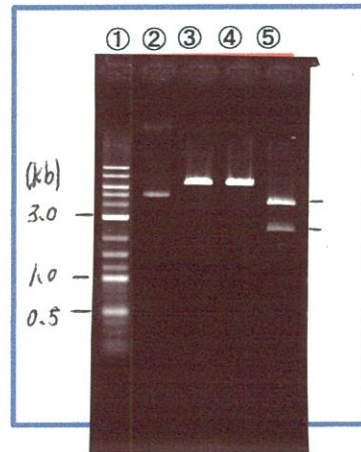
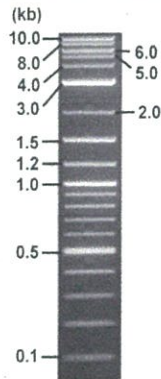
< Size of fragment expected from this clone >

DNA	<u>0.4</u> ul
Enzyme (EcoRI + XhoI)	0.5 + 0.5 ul
Buffer H	1 ul
dH ₂ O	<u>7.6</u> ul
Total	10 ul

EcoRI	6.8 kb
XhoI	6.8 kb
EcoRI + XhoI	4.3kb (Vector) 2.5 kb

Electrophoresis : 1% agarose gel, 1x TAE Buffer

Marker : 2-Log DNA Ladder (NEB#N3200L)



- ①:Marker
- ②:uncut
- ③:EcoRI
- ④:XhoI
- ⑤:EcoRI + XhoI

● Adjust plasmid DNA solution to 25 ng/ul

Date : _____

DNA (<u>235</u> ng/ul)	<u>84.0</u>	ul
10x TE	<u>78.9</u>	ul
dH ₂ O	<u>626.7</u>	ul
Total	<u>789.6</u>	ul

● Confirmation of the insertion sequence

Date : 20.6.11

Primer A	Reverse2
Primer B	M13
Primer C	poly(A) region primer #0
List of Sequencing Primers	http://dna.brc.riken.jp/en/GNPclone3en.html

● Shipping

Conc. : 25 ng/ul, Volume : 40 ul

~~Conc. : _____ ng/ul, Volume : _____ ul~~

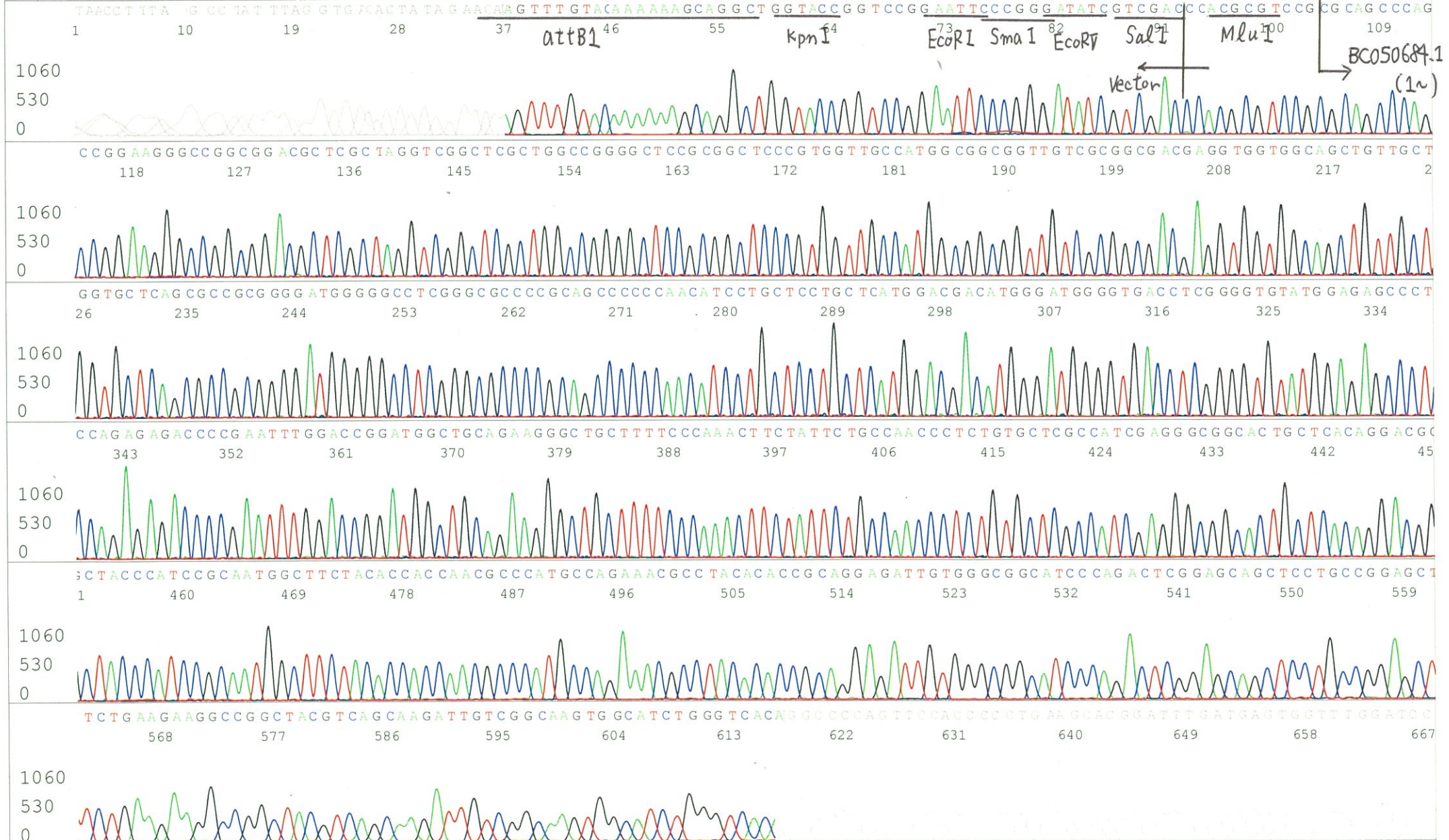
APPROVED BY :

<http://dna.brc.riken.jp/index.html>



S/N G:88 A:73 T:60 C:11 Primer A : Reverse2
 KB.bcp
 KB 1.4.1.8 Cap:1 5' GCGGATAACAATTTTCACACAGG 3'

Gray line indicates quality value
 (QV) < 40.



S/N G:32 A:34 T:37 C:44

Primer B : M13

7893_IRAK110119_B0D3_2M13(-40)

KB_3500_POP7_BDTv3.mob

Gray line indicates quality value

Jun 11,2020 09:44AM, JST

KB.bcp

Pts 1667 to 8464 Pk1 Loc:1635

(QV) < 40.

Jun 11,2020 09:59AM, JST

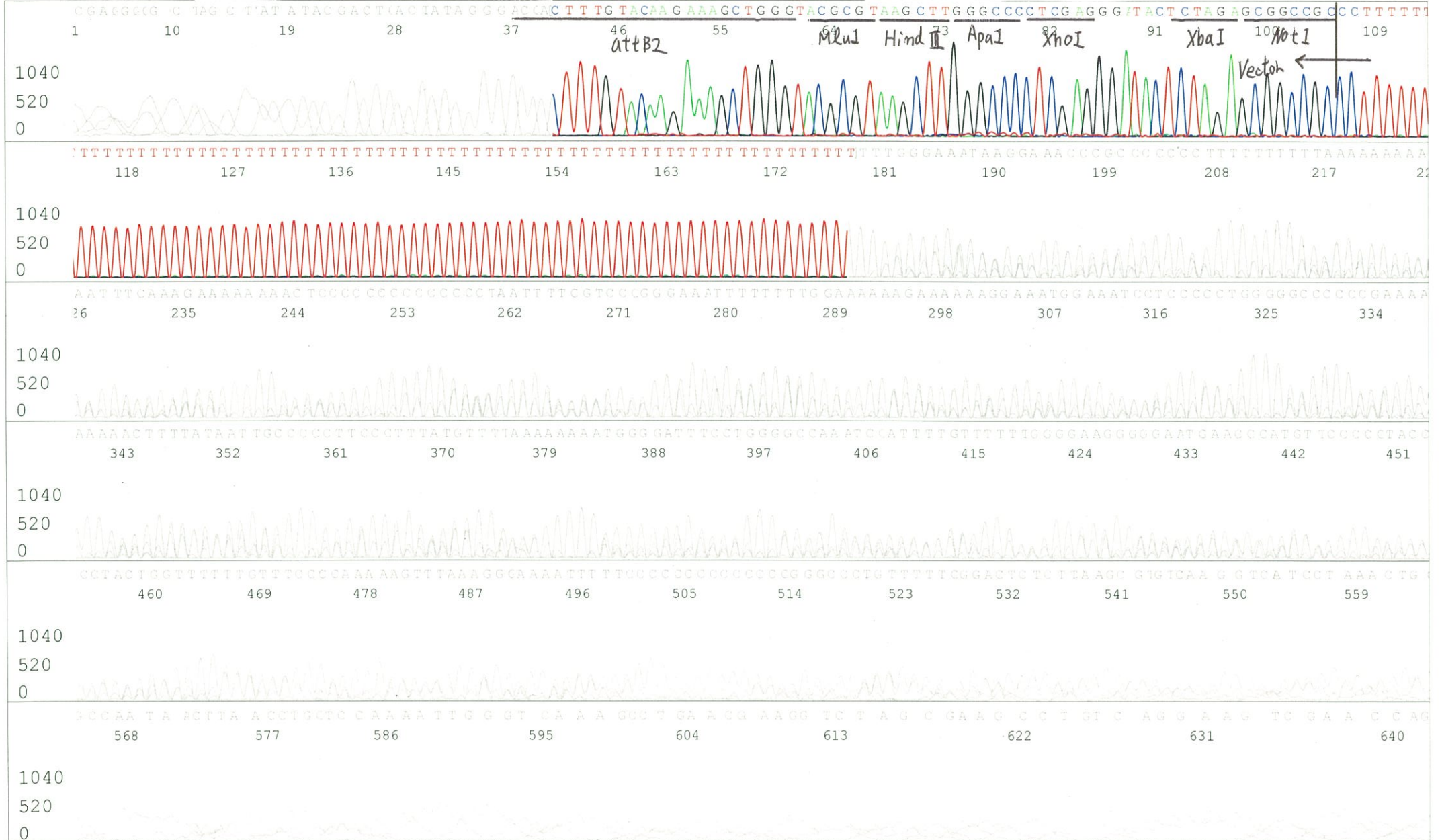
KB 1.4.1.8 Cap:2

5' GTTTTCCAGTCACGACGTTGTA 3'

Version 6.0 HiSQV Bases: 166

Spacing:10.38 Pts/Panel1350

Plate Name: 20200611_GNP



S/N G:73 A:91 T:63 C:92
KB.bcp
KB 1.4.1.8 Cap:3

Primer C : Poly(A) region primer #0
5' TTTTTTTTTTTTTTTTTTTTTNNN 3'

7893_IRAK110119_B0D3_2_GNP Mixture
KB_3500_POP7_BDTv3.mob
Pts 1676 to 8344 Pk1 Loc:1644
Version 6.0 HiSQV Bases: 654

Gray line indicates quality value
(QV) < 40.

Jun 11,2020 09:44AM, JST
Jun 11,2020 09:59AM, JST
Spacing:10.23 Pts/Panel1350
Plate Name: 20200611_GNP

