

**RIKEN Clone ID : IRAK106P17**

Vector : pBluescript<sup>+</sup>

Gene	KIF3A	
Accession No.	BC045542.1	3292 bp
	CDS	2109 bp

● Plasmid DNA purification

Date : 150507

Culture : LB (100 ug/ml Ampicillin) 5 ml → at 37 deg C over night

Date : 150508

Purification : QIAGEN Miniprep kit → dH<sub>2</sub>O 100 ul

● Digestion by restriction enzyme/Concentration calibration

Date : 150508

DNA concentration (O.D.): 124 ng/ul

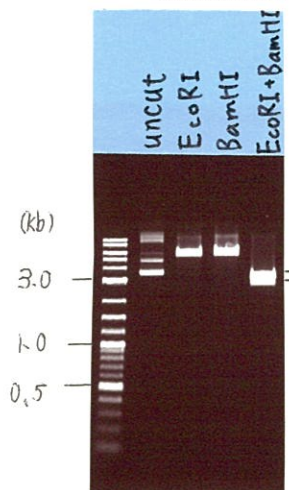
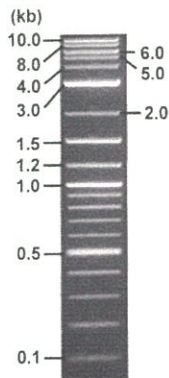
< Size of fragment expected from this clone >

DNA	0.4	ul
Enzyme (EcoRI + BamHI)	0.5 + 0.5	ul
Buffer H	1	ul
dH <sub>2</sub> O	7.6	ul
Total	10	ul

EcoRI	6.1	kb
BamHI	6.1	kb
EcoRI + BamHI	2.8kb (Vector)	3.3kb

Electrophoresis : 1% agarose gel, 1x TAE Buffer

Marker : 2-Log DNA Ladder (NEB#N3200L)



● Adjust plasmid DNA solution to 25 ng/ul

Date : 150511

● Confirmation of the insertion sequence

Date : 150508

DNA ( <u>124</u> ng/ul)	<u>80.0</u>	ul
10x TE	<u>39.7</u>	ul
dH <sub>2</sub> O	<u>277.1</u>	ul
Total	<u>396.8</u>	ul

Primer A	T7
Primer B	Reverse2
Primer C	-
List of Sequencing Primers	<a href="http://dna.brc.riken.jp/en/GNPclone3en.html">http://dna.brc.riken.jp/en/GNPclone3en.html</a>

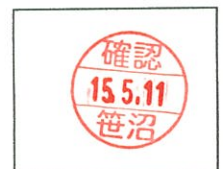
● Shipping

Conc. : 25 ng/ul, Volume : 40 ul

~~Conc. : ng/ul, Volume : ul~~

APPROVED BY :

<http://dna.brc.riken.jp/index.html>



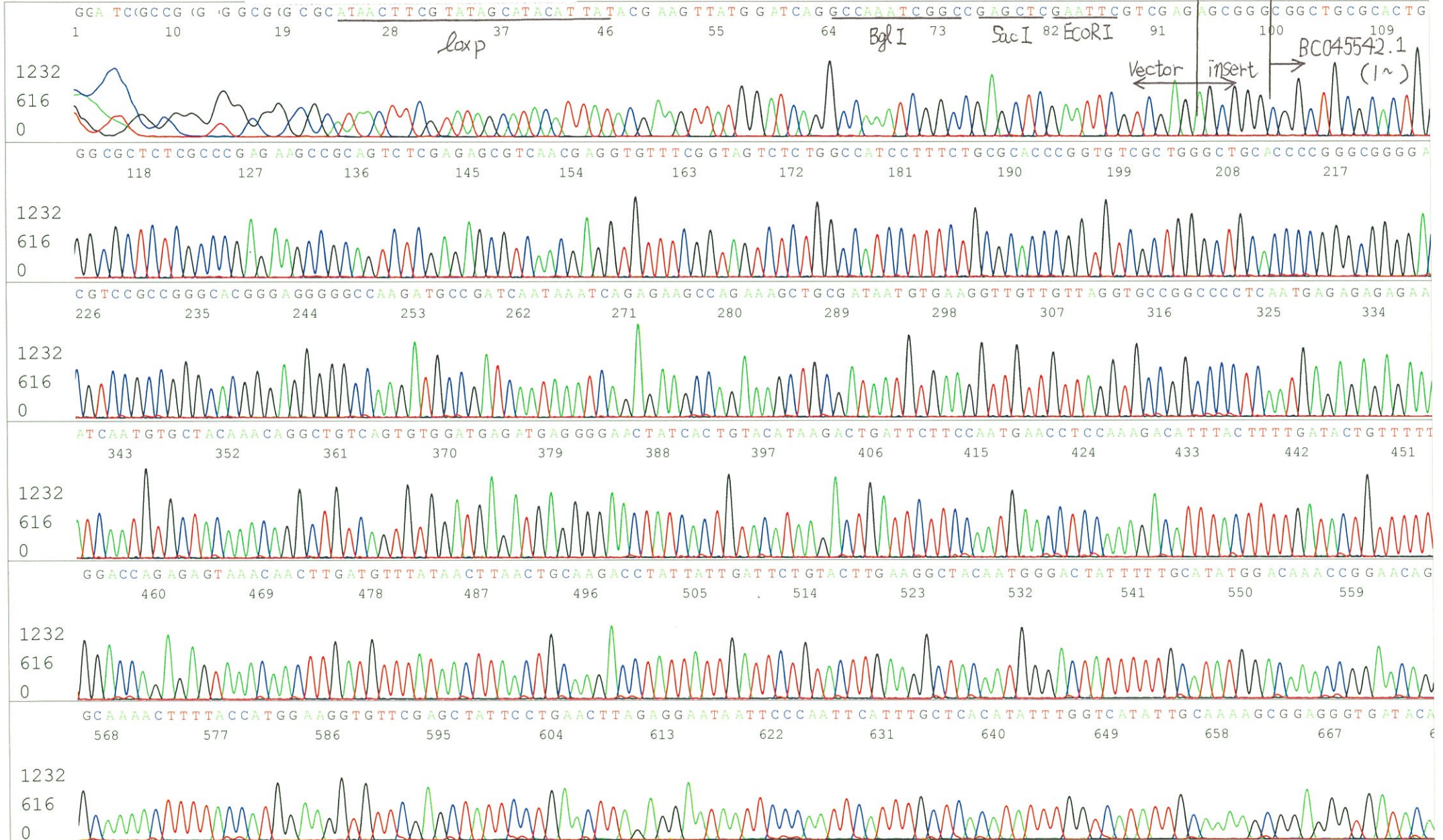
S/N G:155 A:138 T:92 C:92  
KB.bcp  
KB 1.4.1.8 Cap:8

Primer A : T7

5' TAATACGACTCACTATAGGG 3'

IRAK106P17\_A5E1\_T7\_C08\_08  
IRAK106P17\_A5E1\_T7  
KB\_3500\_POP7\_BDTv3.mob  
Pts 1471 to 12724 Pk1 Loc:1448  
Version 6.0 HiSQV Bases: 990

Inst Model/Name 3500/3500 Instrument  
May 08,2015 02:18PM, JST  
May 08,2015 02:44PM, JST  
Spacing:11.22 Pts/Panel1350  
Plate Name: 20150508\_GNP

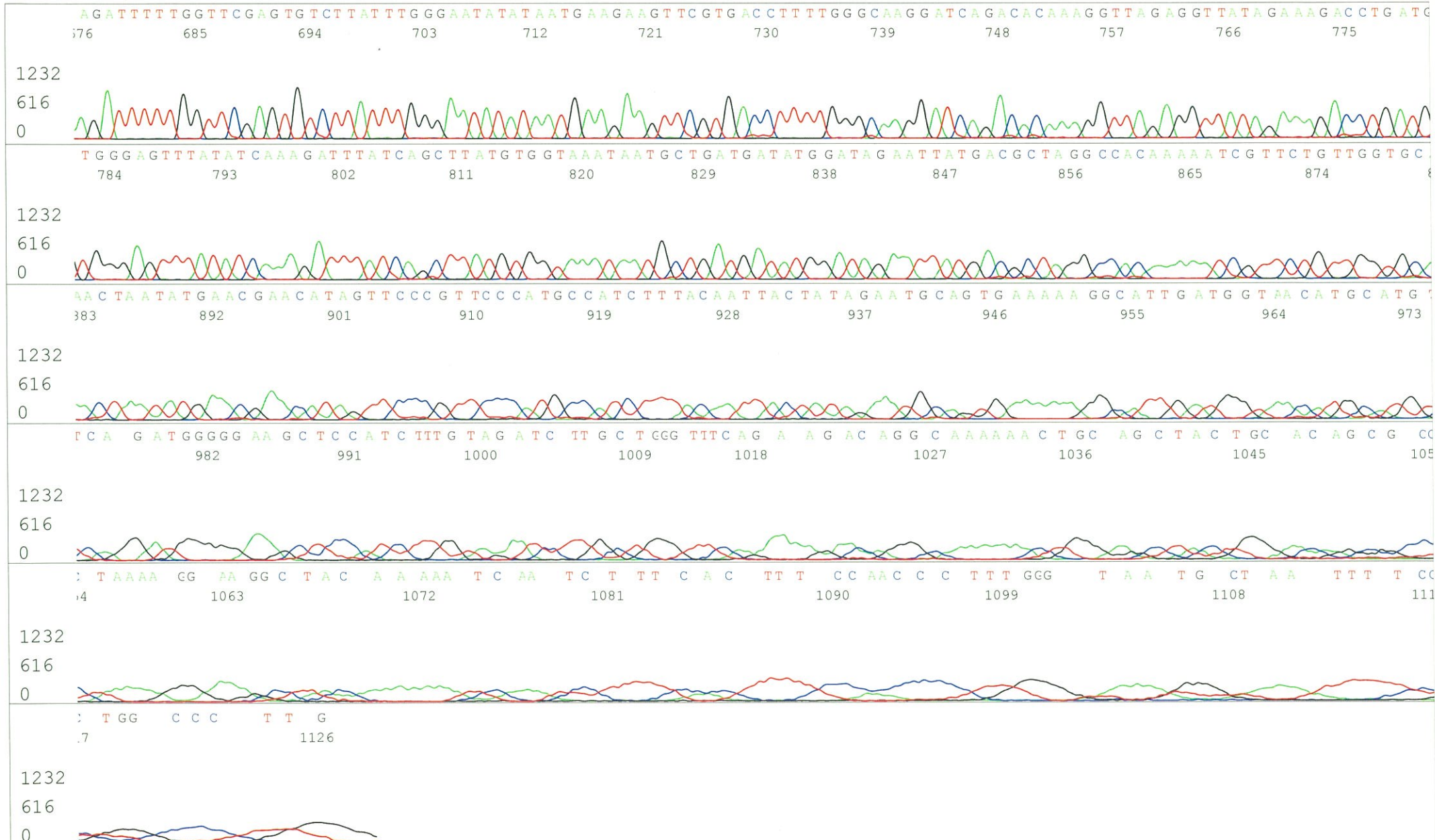




S/N G:155 A:138 T:92 C:92  
KB.bcp  
KB 1.4.1.8 Cap:8

IRAK106P17\_A5E1\_T7\_C08\_08  
IRAK106P17\_A5E1\_T7  
KB\_3500\_POP7\_BDTv3.mob  
Pts 1471 to 12724 Pk1 Loc:1448  
Version 6.0 HiSQV Bases: 990

Inst Model/Name 3500/3500 Instrument  
May 08,2015 02:18PM, JST  
May 08,2015 02:44PM, JST  
Spacing:11.22 Pts/Panel1350  
Plate Name: 20150508\_GNP





S/N G:169 A:238 T:165 C:139

Primer B : Reverse2

IRAK106P17\_A5E1\_Reverse2

May 08,2015 02:18PM, JST

KB.bcp

KB\_3500\_POP7\_BDTv3.mob

May 08,2015 02:44PM, JST

KB 1.4.1.8 Cap:11

5' GCGGATAACAATTTTCACACAGG 3'

Pts 1441 to 12665 Pk1 Loc:1418

Spacing:11.19 Pts/Panel1350

Version 6.0 HiSQV Bases: 964

Plate Name: 20150508\_GNP

