

**RIKEN Clone ID : IRAK098G23**

Vector : pCMV-SPORT6

Gene	KATNA1	
Accession No.	BC050428.1	1533 bp
	CDS	936 bp

● Plasmid DNA purification

Date : 22.04.12

Culture : LB (100 ug/ml Ampicillin) 5 ml -> at 37 deg C over night

Date : 22.04.13

Purification : QIAGEN Miniprep kit -> dH<sub>2</sub>O 100 ul

● Digestion by restriction enzyme/Concentration calibration

Date : 22.04.13

DNA concentration (O.D.): 326 ng/ul

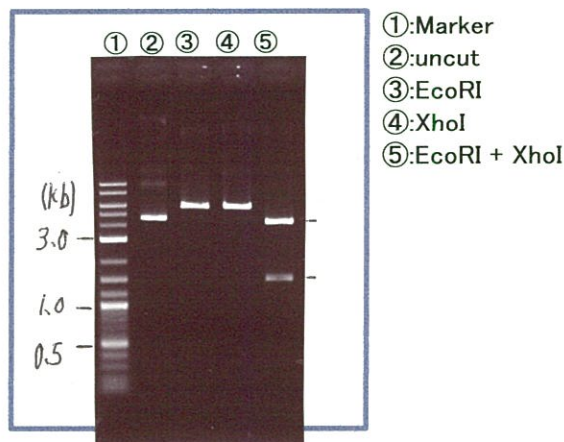
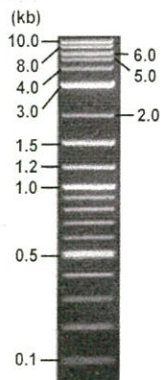
< Size of fragment expected from this clone >

DNA	0.3 ul
Enzyme (EcoRI + XhoI)	0.5 + 0.5 ul
Buffer H	1 ul
dH <sub>2</sub> O	7.7 ul
Total	10 ul

EcoRI	5.9 kb
XhoI	5.9 kb
EcoRI + XhoI	4.3kb (Vector) 1.6 kb

Electrophoresis : 1% agarose gel, 1x TAE Buffer

Marker : 2-Log DNA Ladder (NEB#N3200L)



● Adjust plasmid DNA solution to 25 ng/ul

Date : 22.04.15

DNA (326 ng/ul)	84.0 ul
10x TE	109.5 ul
dH <sub>2</sub> O	901.8 ul
Total	1095.3 ul

● Confirmation of the insertion sequence

Date : 22.04.14

Primer A	Reverse2
Primer B	M13
Primer C	poly(A) region primer #0
List of Sequencing Primers	<a href="http://dna.brc.riken.jp/en/GNPclone3en.html">http://dna.brc.riken.jp/en/GNPclone3en.html</a>

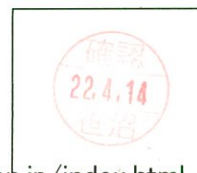
● Shipping

Conc. : 25 ng/ul, Volume : 40 ul

Conc. : \_\_\_ ng/ul, Volume : \_\_\_ ul

APPROVED BY :

<http://dna.brc.riken.jp/index.html>



S/N G:223 A:138 T:98 C:154 Primer A : Reverse2

7893\_IRAK098G23\_B2D8\_2\_Reverse2

Apr 14,2022 09:34AM, JST

KB.bcp

KB\_3500\_POP7\_BDTv3.mob

Gray line indicates quality value

Apr 14,2022 09:53AM, JST

KB 1.4.1.8 Cap:1

5' GCGGATAACAATTTTCACACAGG 3'

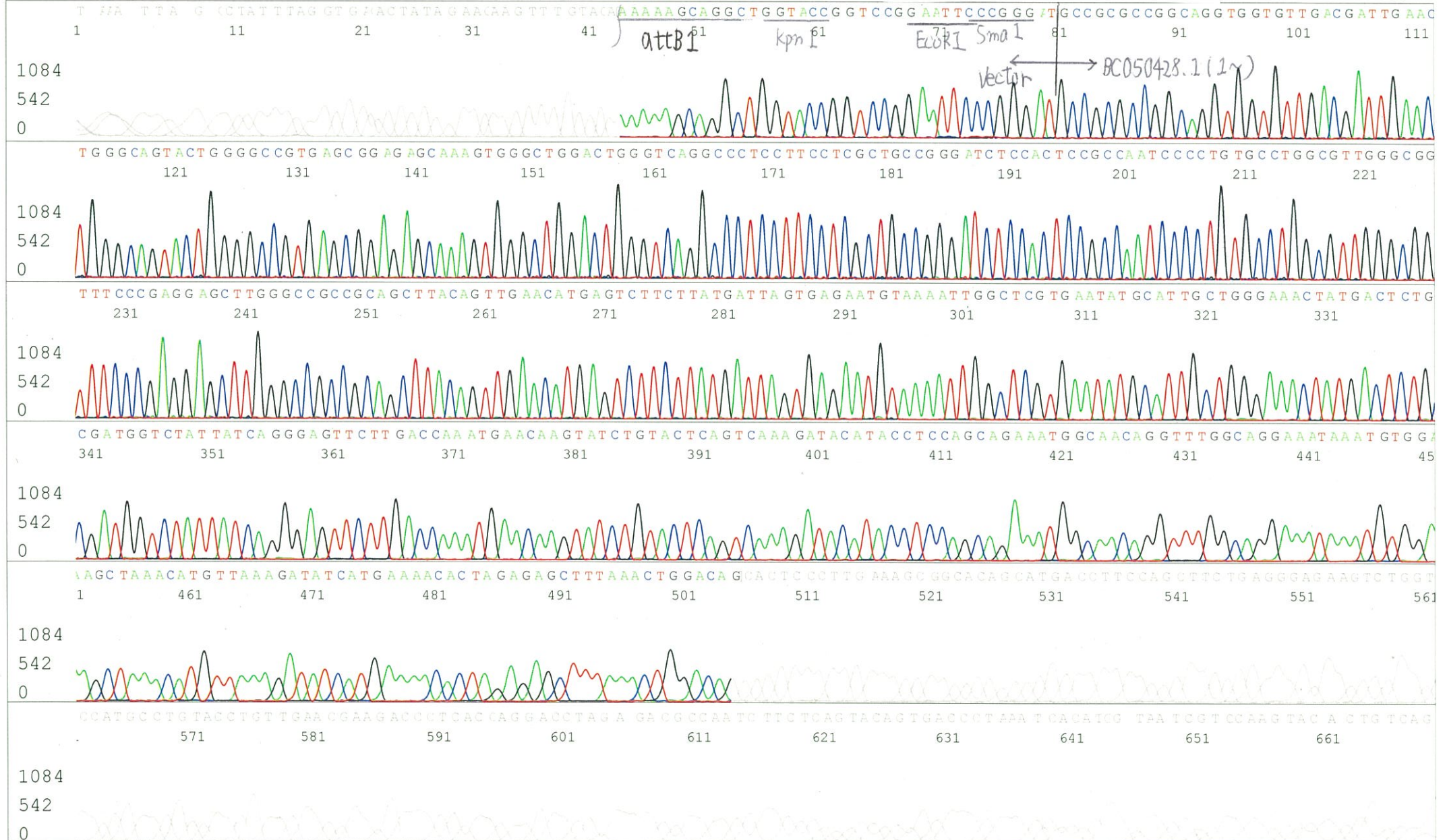
Pts 1730 to 8707 Pk1 Loc:1698

(QV) < 40.

Spacing:11.01 Pts/Panel1350

Version 6.0 HiSQV Bases: 598

Plate Name: 20220414\_GNP



S/N G:48 A:68 T:63 C:56

Primer B : M13

7893\_IRAK098G23\_B2D8\_2\_M13(-40)

Apr 14,2022 09:34AM, JST

KB.bcp

KB\_3500\_POP7\_BDTv3.mob

Gray line indicates quality value

Apr 14,2022 09:53AM, JST

KB 1.4.1.8 Cap:4

5' GTTTTCCCAGTCACGACGTTGTA 3'

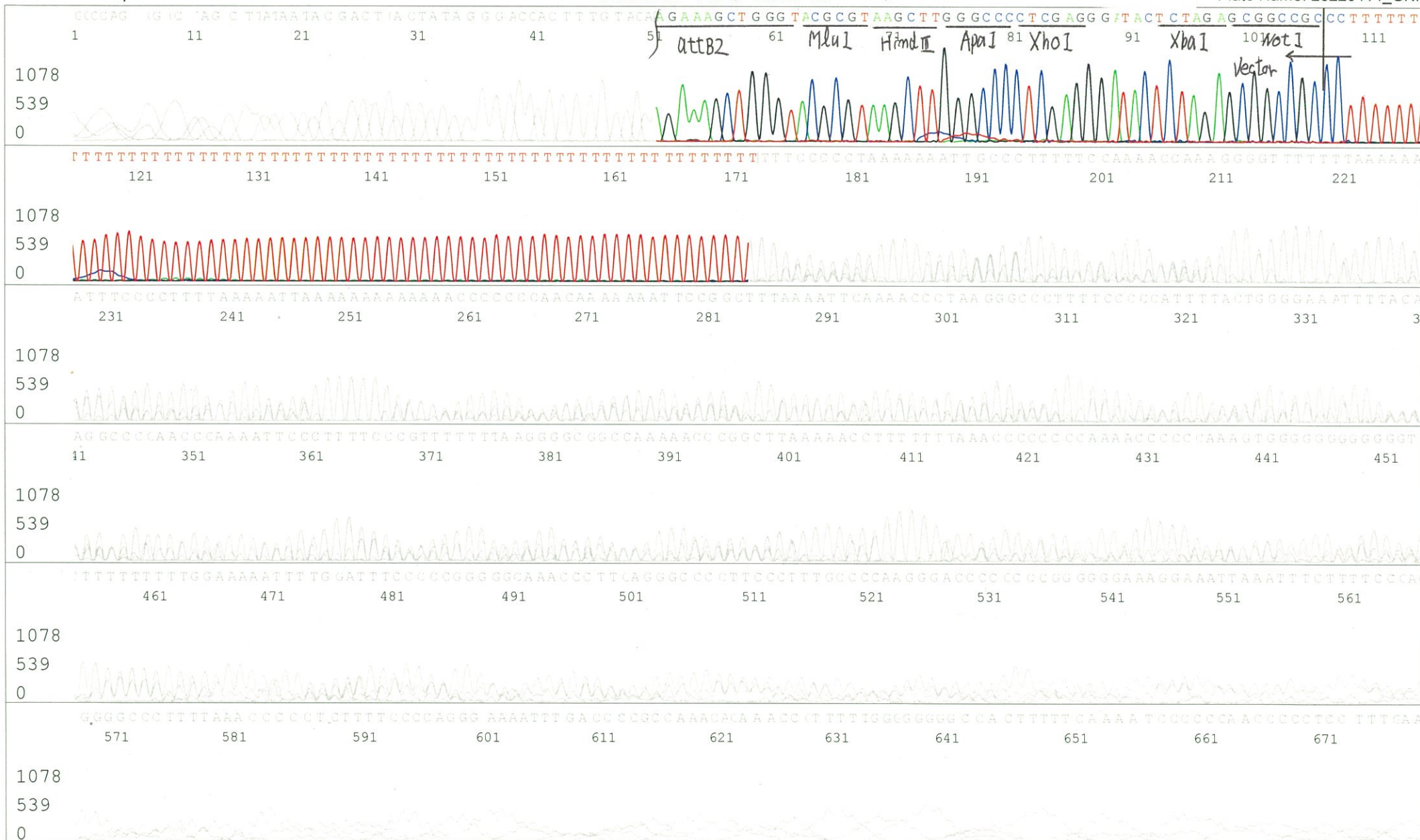
Pts 1721 to 8707 Pk1 Loc:1689

(QV) < 40.

Spacing:10.97 Pts/Panel1350

Version 6.0 HiSQV Bases: 161

Plate Name: 20220414\_GNP



S/N G:35 A:45 T:32 C:39

Primer C : Poly(A) region primer #0

7893\_IRAK098G23\_B2D8\_2\_GNP Mixture

Apr 14,2022 09:34AM, JST

KB.bcp

KB\_3500\_POP7\_BDTv3.mob

Gray line indicates quality value

Apr 14,2022 09:53AM, JST

KB 1.4.1.8 Cap:7

5' TTTTTTTTTTTTTTTTTTTTTT VNN 3'

Pts 1751 to 8707 Pk1 Loc:1719

(QV) < 40.

Spacing:11.13 Pts/Panel1350

Version 6.0 HiSQV Bases: 643

Plate Name: 20220414\_GNP

