

RIKEN Clone ID : IRAK091J16

Vector : pBluescript

Gene	PELI1	
Accession No.	BC050019.1	3571 bp
	CDS	1257 bp

● Plasmid DNA purification

Date : 190610

Culture : LB (100 ug/ml Ampicillin) 5 ml -> at 37 deg C over night

Date : 190611

Purification : QIAGEN Miniprep kit -> dH₂O 100 ul

● Digestion by restriction enzyme/Concentration calibration

Date : 190611

DNA concentration (O.D.): 142 ng/ul

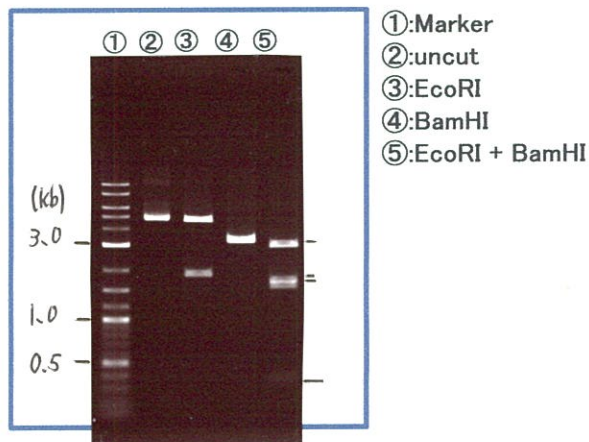
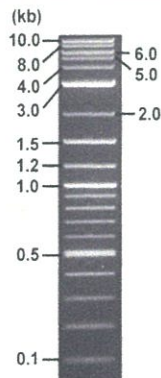
< Size of fragment expected from this clone >

DNA	0.7	ul
Enzyme (EcoRI + BamHI)	0.5 + 0.5	ul
Buffer H	1	ul
dH ₂ O	7.3	ul
Total	10	ul

EcoRI	4.5, 1.9 kb
BamHI	3.3, 3.1 kb
EcoRI + BamHI	2.8kb (Vector) 1.7, 1.6, 0.3 kb

Electrophoresis : 1% agarose gel, 1x TAE Buffer

Marker : 2-Log DNA Ladder (NEB#N3200L)



● Adjust plasmid DNA solution to 25 ng/ul

Date : 190614

DNA (142 ng/ul)	75.0	ul
10x TE	42.6	ul
dH ₂ O	308.4	ul
Total	426.0	ul

● Confirmation of the insertion sequence

Date : 190612

Primer A	T7
Primer B	Reverse2
Primer C	Poly(A) region primer # 18
List of Sequencing Primers	http://dna.brc.riken.jp/en/GNPclone3en.html

● Shipping

Conc. : 25 ng/ul, Volume : 40 ul

Conc. : _____ ng/ul, Volume : _____ ul

APPROVED BY :

<http://dna.brc.riken.jp/index.html>



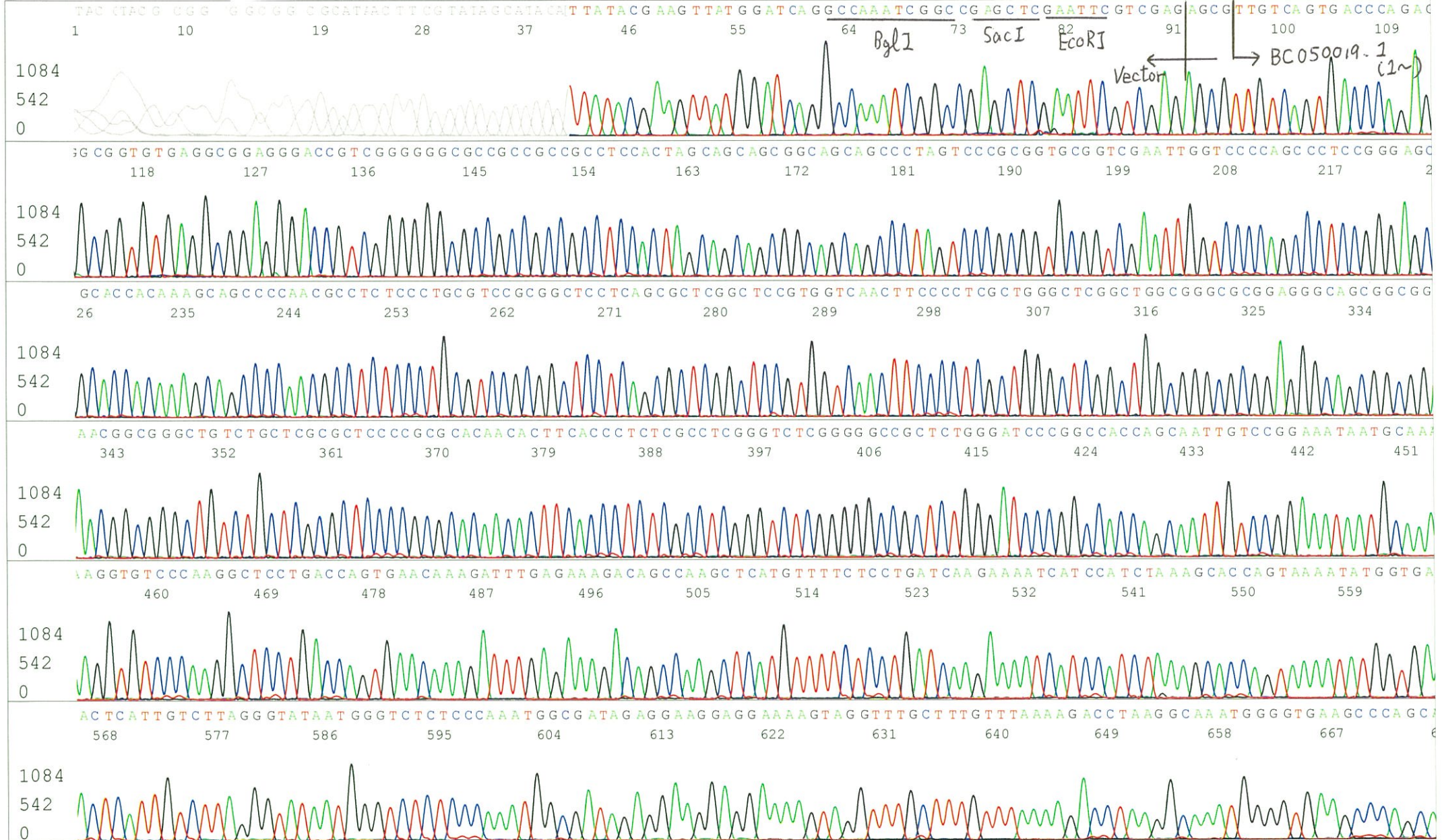
S/N G:159 A:158 T:135 C:239
KB.bcp
KB 1.4.1.8 Cap:24

Primer A : T7
5' TAATACGACTCACTATAGGG 3'

IRAK091J16_A9F6_1_T7
KB_3500_POP7_BDTv3.mob
Pts 1359 to 12884 Pk1 Loc:1336
Version 6.0 HiSQV Bases: 1011

Gray line indicates quality value
(QV) < 40.

Jun 12,2019 10:48AM, JST
Jun 12,2019 11:14AM, JST
Spacing:11.47 Pts/Panel1350
Plate Name: 20190611 kitaku



S/N G:38 A:57 T:55 C:45

IRAK091J16_A9F6_1_Reverse2

Jun 12,2019 09:49AM, JST

KB.bcp

KB_3500_POP7_BDTv3.mob

Jun 12,2019 10:07AM, JST

KB 1.4.1.8 Cap:2

Primer B : Reverse2

Pts 1759 to 8704 Pk1 Loc:1727

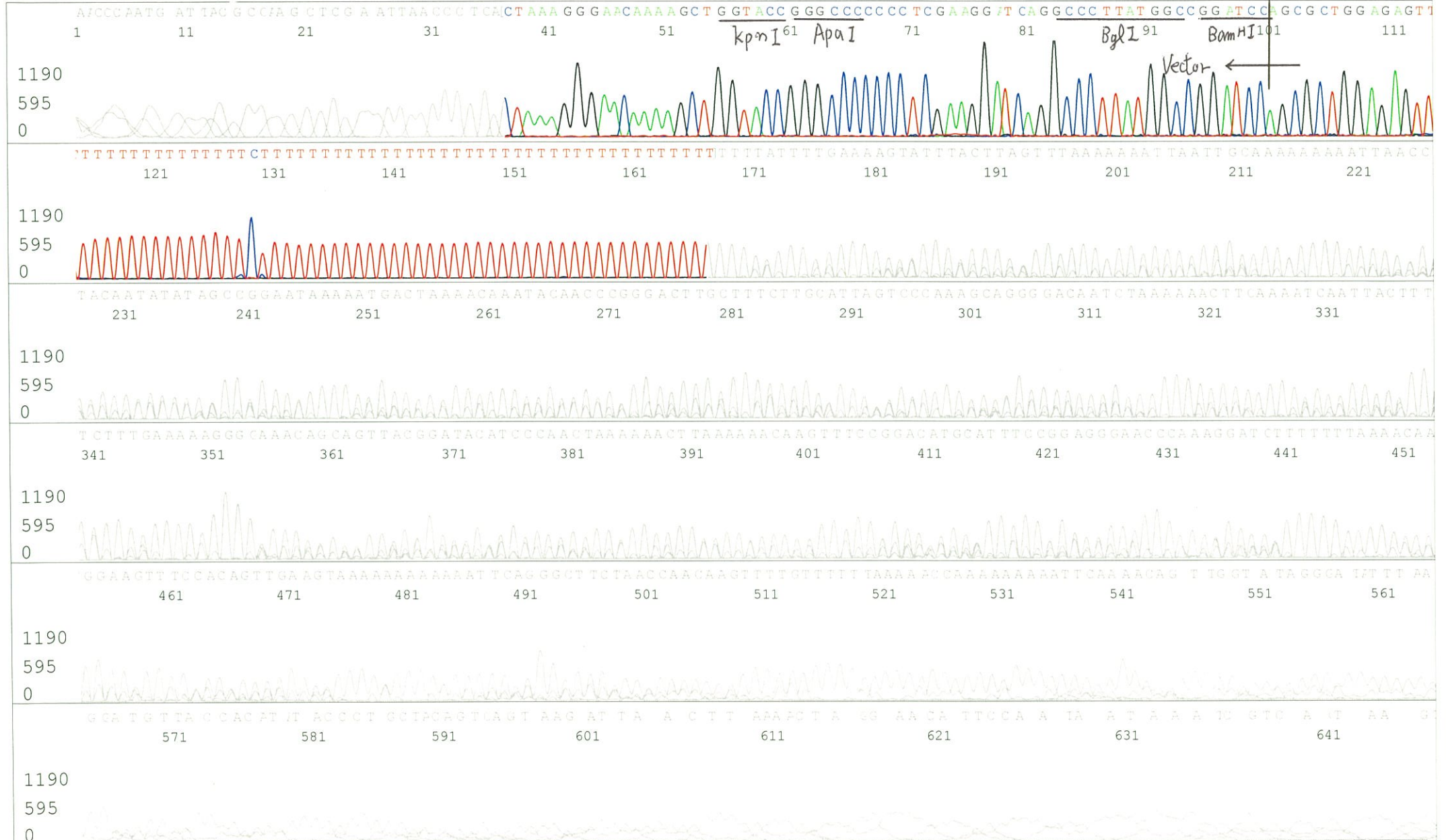
Spacing:11.6 Pts/Panel1350

5' GCGGATAACAATTTTCACACAGG 3'

Version 6.0 HiSQV Bases: 191

Gray line indicates quality value (QV) < 40.

Plate Name: 20190612_GNP



S/N G:15 A:31 T:24 C:20
KB.bcp
KB 1.4.1.8 Cap:3

Primer C : Poly(A) region primer #18
5' TTTTTTTTTTTTTTTTTTTTTT GAA 3'

IRAK091J16_A9F6_1_GNP18_A12_03_ABI24
IRAK091J16_A9F6_1_GNP18
KB_3500_POP7_BDTv3.mob
Pts 1376 to 13039 Pk1 Loc:1353
Version 6.0 HiSQV Bases: 928

Inst Model/Name 3500/3500 Instrument
Jun 12,2019 02:46PM, JST
Jun 12,2019 03:12PM, JST
Spacing:11.41 Pts/Panel1350
Plate Name: 190612 kitaku

Gray line indicates quality value
(QV) < 40.

