

RIKEN Clone ID : IRAK084F17

Lot#: 7893_A6Ba

Vector : pCMV-SPORT6

Gene	RALA	
Accession No.	BC039858.1	2774 bp
	CDS	621 bp

● Plasmid DNA purification

Date : 160210

Culture : LB (100 ug/ml Ampicillin) 5 ml → at 37 deg C over night

Date : 160212

Purification : QIAGEN Miniprep kit → dH₂O 100 ul

● Digestion by restriction enzyme/Concentration calibration

Date : 160212

DNA concentration (O.D.): 263 ng/ul

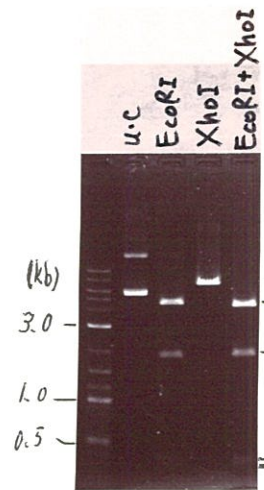
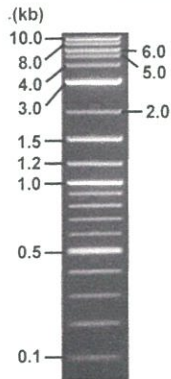
< Size of fragment expected from this clone >

DNA	0.4	ul
Enzyme (EcoRI + XhoI)	0.5 + 0.5	ul
Buffer H	1	ul
dH ₂ O	7.6	ul
Total	10	ul

EcoRI	4.6 , 1.9, 0.32, 0.31 kb
XhoI	7.1 kb
EcoRI + XhoI	4.3kb (Vector) 1.9, 0.32, 0.31, 0.30 kb

Electrophoresis : 1% agarose gel, 1x TAE Buffer

Marker : 2-Log DNA Ladder (NEB#N3200L)



● Adjust plasmid DNA solution to 25 ng/ul

Date : 160217

DNA (<u>263</u> ng/ul)	<u>83.0</u>	ul
10x TE	<u>87.3</u>	ul
dH ₂ O	<u>702.9</u>	ul
Total	<u>873.2</u>	ul

● Confirmation of the insertion sequence

Date : 160216

Primer A	Reverse2
Primer B	M13
Primer C	-
List of Sequencing Primers	http://dna.brc.riken.jp/en/GNPclone3en.html ml

● Shipping

Conc. : 25 ng/ul, Volume : 40 ul

~~Conc. : ng/ul, Volume : ul~~

APPROVED BY :

<http://dna.brc.riken.jp/index.html>

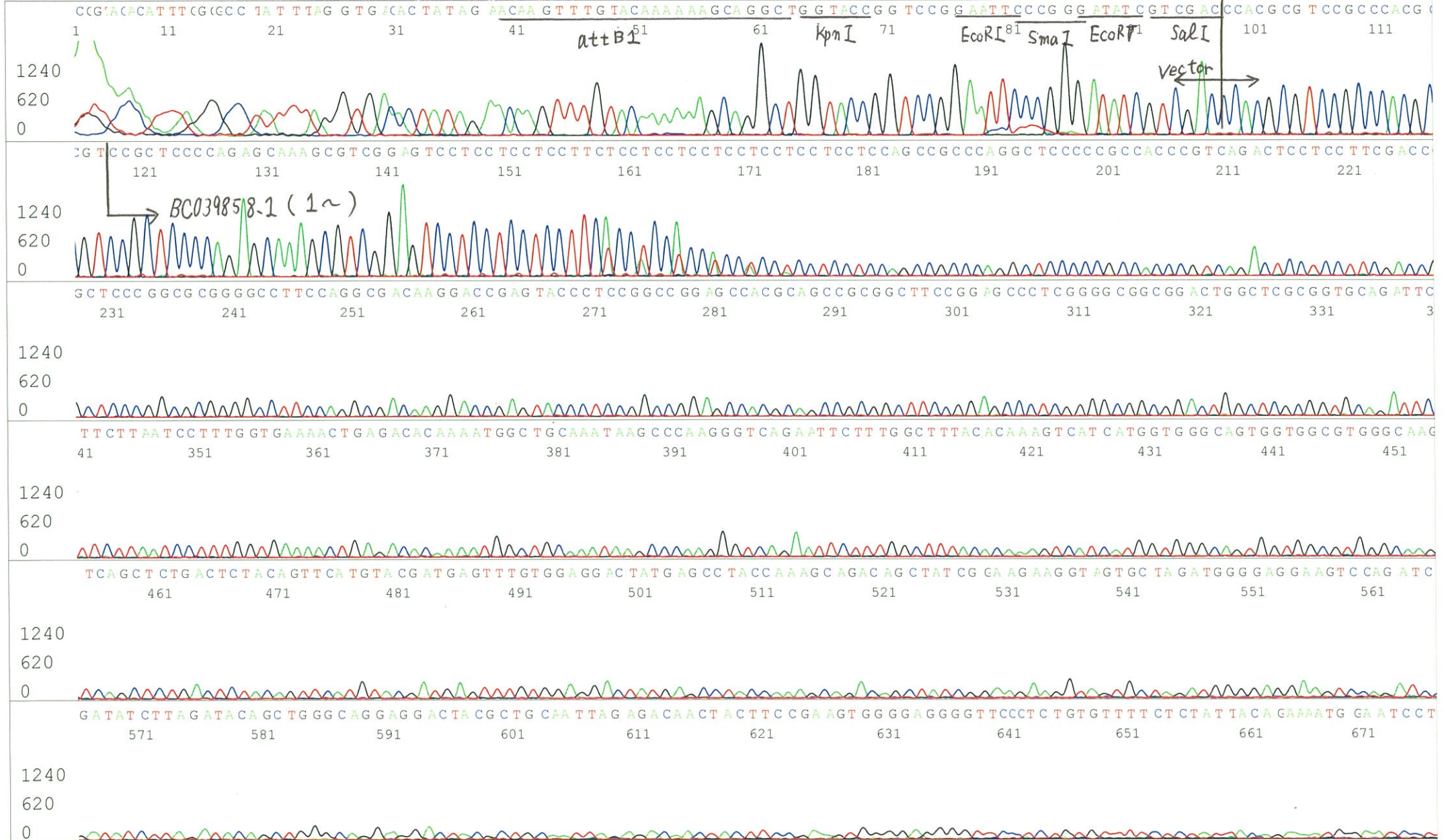


S/N G:18 A:18 T:15 C:18
KB.bcp
KB 1.4.1.8 Cap:2

Primer A : Reverse2
5' GCGGATAACAATTTTCACACAGG 3'

IRAK084F17_A6Ba_Reverse2_A02_02
IRAK084F17_A6Ba_Reverse2
KB_3500_POP7_BDTv3.mob
Pts 1471 to 12653 PK1 Loc:1448
Version 6.0 HiSQV Bases: 918

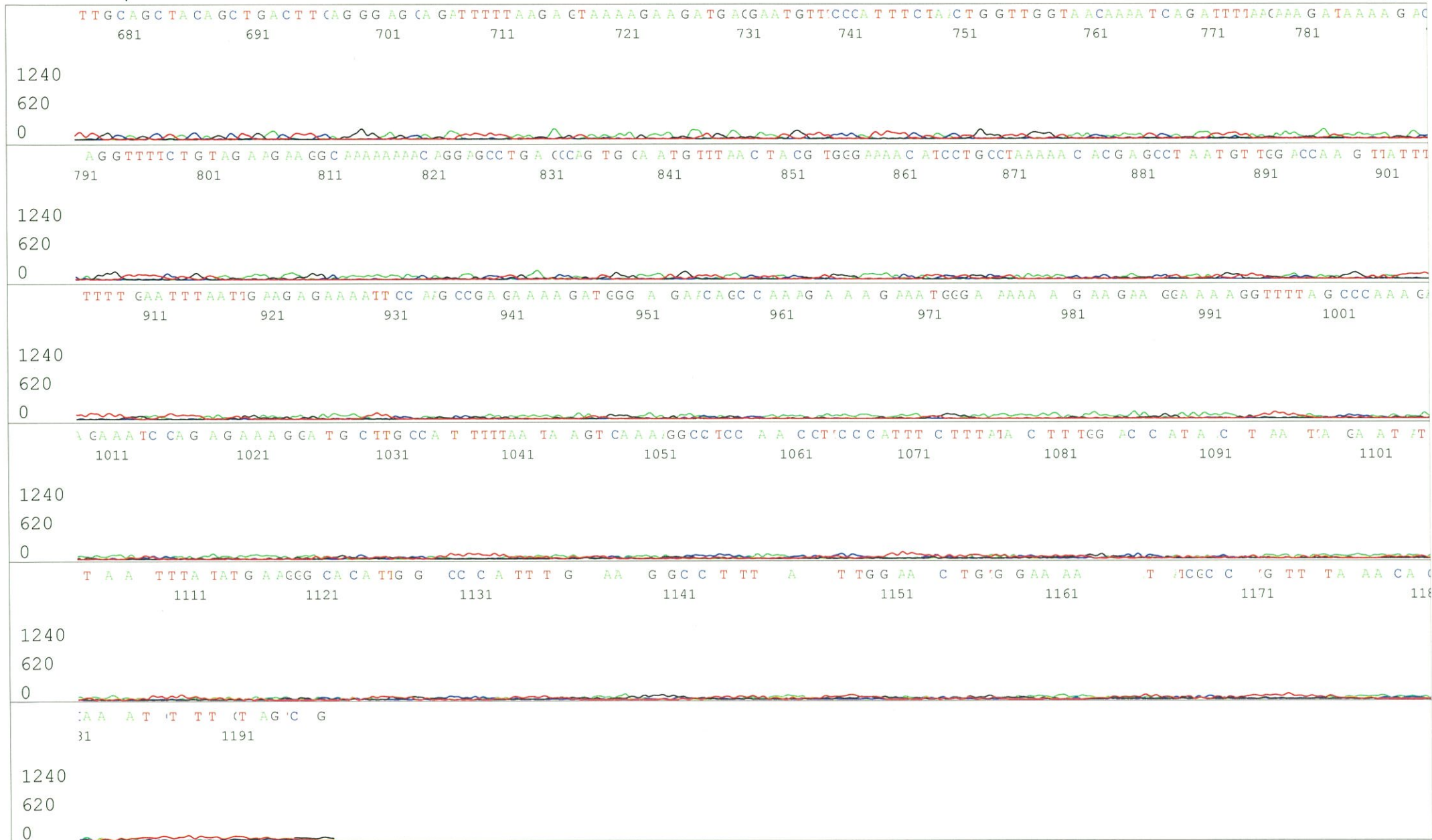
Inst Model/Name 3500/3500 Instrument
Feb 16,2016 04:54PM, JST
Feb 16,2016 05:20PM, JST
Spacing:11.91 Pts/Panel1350
Plate Name: 20160216_GNP



S/N G:18 A:18 T:15 C:18
KB.bcp
KB 1.4.1.8 Cap:2

IRAK084F17_A6Ba_Reverse2_A02_02
IRAK084F17_A6Ba_Reverse2
KB_3500_POP7_BDTv3.mob
Pts 1471 to 12653 PK1 Loc:1448
Version 6.0 HiSQV Bases: 918

Inst Model/Name 3500/3500 Instrument
Feb 16,2016 04:54PM, JST
Feb 16,2016 05:20PM, JST
Spacing:11.91 Pts/Panel1350
Plate Name: 20160216_GNP



S/N G:828 A:809 T:740 C:652

Primer B : M13

IRAK084F17_A6Ba_M13(-40)

Feb 16,2016 04:54PM, JST

KB.bcp

KB_3500_POP7_BDTv3.mob

Feb 16,2016 05:20PM, JST

KB 1.4.1.8 Cap:5

5' GTTTTCCCAGTCACGACGTTGTA 3'

Pts 1507 to 12715 Pk1 Loc:1484

Spacing:11.21 Pts/Panel1350

Version 6.0 HiSQV Bases: 897

Plate Name: 20160216_GNP

