

RIKEN Clone ID : IRAK079P12

Lot#: 7893_A9E9

Vector : pCMV-SPORT6

Gene	PRDX6	
Accession No.	BC035857.1	1715 bp
	CDS	675 bp

● Plasmid DNA purification

Date : 190509

Culture : LB (100 ug/ml Ampicillin) 5 ml → at 37 deg C over night

Date : 190510

Purification : QIAGEN Miniprep kit → dH₂O 100 ul

● Digestion by restriction enzyme/Concentration calibration

Date : 190510

DNA concentration (O.D.): 301 ng/ul

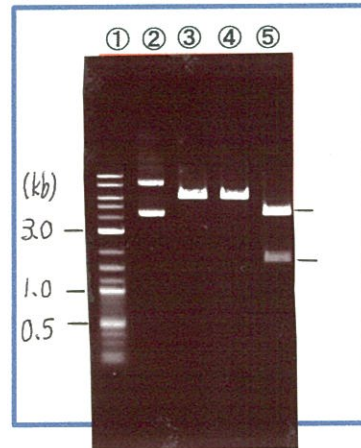
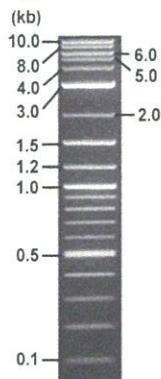
< Size of fragment expected from this clone >

DNA	<u>0.3</u> ul
Enzyme (EcoRI + XhoI)	0.5 + 0.5 ul
Buffer H	1 ul
dH ₂ O	<u>7.7</u> ul
Total	10 ul

EcoRI	6.1 kb
XhoI	6.1 kb
EcoRI + XhoI	4.3kb (Vector) 1.8 kb

Erectrophoresis : 1% agarose gel, 1x TAE Buffer

Marker : 2-Log DNA Ladder (NEB#N3200L)



- ①:Marker
- ②:uncut
- ③:EcoRI
- ④:XhoI
- ⑤:EcoRI + XhoI

● Adjust plasmid DNA solution to 25 ng/ul

Date : 190521

DNA (<u>301</u> ng/ul)	<u>82.0</u> ul
10x TE	<u>98.7</u> ul
dH ₂ O	<u>806.5</u> ul
Total	<u>987.2</u> ul

● Confirmation of the insertion sequence

Date : 190514

Primer A	Reverse2
Primer B	M13
Primer C	poly(A) region primer #0
List of Sequencing Primers	http://dna.brc.riken.jp/en/GNPclone3en.html

● Shipping

Conc. : 25 ng/ul, Volume : 40 ul

Conc. : ng/ul, Volume : ul



APPROVED BY : <http://dna.brc.riken.jp/index.html>

S/N G:91 A:95 T:92 C:140

Primer A : Reverse2

IRAK079P12_A9E9_Reverse2

May 14,2019 01:38PM, JST

KB.bcp

KB_3500_POP7_BDTv3.mob

Gray line indicates quality value

May 14,2019 01:54PM, JST

KB 1.4.1.8 Cap:3

5' GCGGATAACAATTTTCACACAGG 3'

Pts 1754 to 8702 Pk1 Loc:1722

(QV) < 40.

Spacing:11.2 Pts/Panel1350

Version 6.0 HiSQV Bases: 685

Plate Name: 20190514_GNP

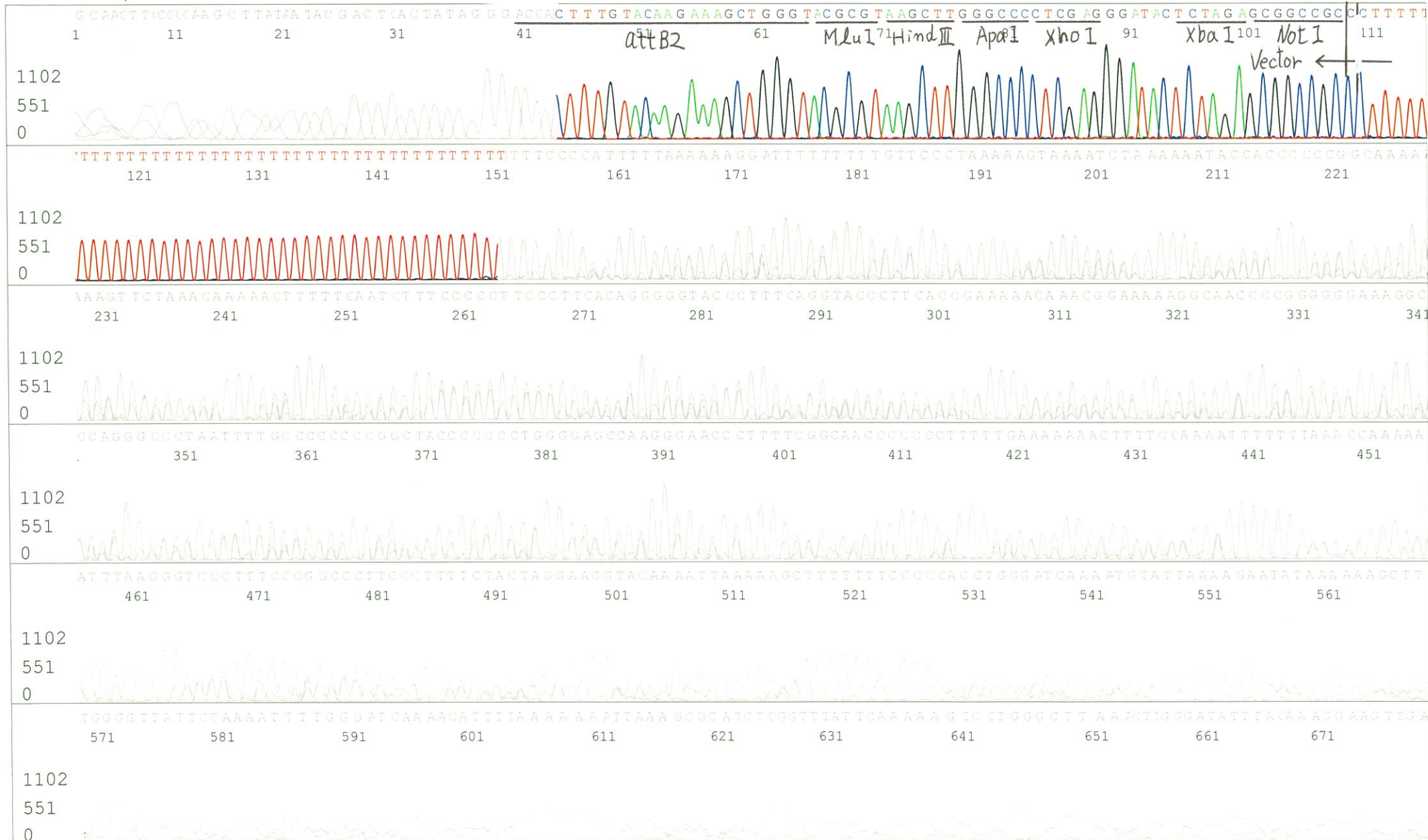


S/N G:21 A:27 T:35 C:34
KB.bcp
KB 1.4.1.8 Cap:4

Primer B : M13

5' GTTTCCAGTCACGACGTTGTA 3'

Gray line indicates quality value
(QV) < 40.



S/N G:22 A:32 T:32 C:34

Primer C : Poly(A) region primer #0

IRAK079P12_A9E9_GNP Mixture

Gray line indicates quality value (QV) < 40.

May 14,2019 01:38PM, JST

KB.bcp

KB_3500_POP7_BDTv3.mob

May 14,2019 01:54PM, JST

KB 1.4.1.8 Cap:5

5' TTTTTTTTTTTTTTTTTTTTTTNNN 3'

Pts 1751 to 8702 Pk1 Loc:1719

Spacing:11.18 Pts/Panel1350

Version 6.0 HiSQV Bases: 677

Plate Name: 20190514_GNP

