

**RIKEN Clone ID : IRAK071B10**

Vector : pBluescriptR

|               |            |         |
|---------------|------------|---------|
| Gene          | SLCO1A2    |         |
| Accession No. | BC042452.1 | 3846 bp |
|               | CDS        | 1227 bp |

● Plasmid DNA purification

Date : 20.07.15

Culture : LB (100 ug/ml Ampicillin) 5 ml -> at 37 deg C over night

Date : 20.07.16

Purification : QIAGEN Miniprep kit -> dH<sub>2</sub>O 100 ul

● Digestion by restriction enzyme/Concentration calibration

Date : 20.07.16

DNA concentration (O.D.): 148 ng/ul

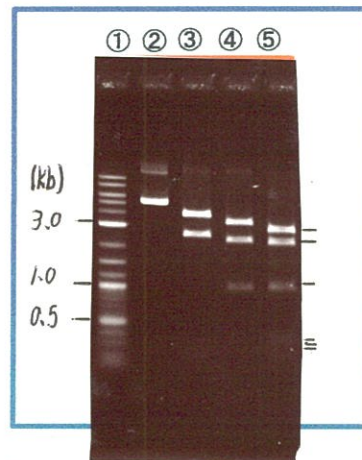
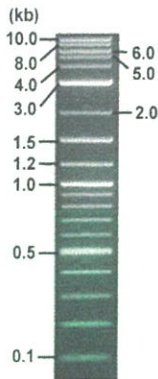
< Size of fragment expected from this clone >

|                        |               |
|------------------------|---------------|
| DNA                    | <u>0.7</u> ul |
| Enzyme (EcoRI + BamHI) | 0.5 + 0.5 ul  |
| Buffer H               | 1 ul          |
| dH <sub>2</sub> O      | <u>7.3</u> ul |
| Total                  | 10 ul         |

|               |  |
|---------------|--|
| EcoRI         | 3.9 , 2.6, 0.2 kb                              |
| BamHI         | 3.3 , 2.4, 1.0 kb                              |
| EcoRI + BamHI | 2.8kb (Vector)      2.3, 1.0, 0.3, 0.2, 0.1 kb |

Erectrophoresis : 1% agarose gel, 1x TAE Buffer

Marker : 2-Log DNA Ladder (NEB#N3200L)



- ①:Marker
- ②:uncut
- ③:EcoRI
- ④:BamHI
- ⑤:EcoRI + BamHI

● Adjust plasmid DNA solution to 25 ng/ul

Date : 20.08.08

● Confirmation of the insertion sequence

Date : 20.07.21

|                         |                 |
|-------------------------|-----------------|
| DNA ( <u>148</u> ng/ul) | <u>84.0</u> ul  |
| 10x TE                  | <u>49.7</u> ul  |
| dH <sub>2</sub> O       | <u>363.5</u> ul |
| Total                   | <u>497.2</u> ul |

|                            |   |
|----------------------------|---|
| Primer A                   | T7  |
| Primer B                   | Reverse2  |
| Primer C                   | -   |
| List of Sequencing Primers | <a href="http://dna.brc.riken.jp/en/GNPclone3en.html">http://dna.brc.riken.jp/en/GNPclone3en.html</a> |

● Shipping

Conc. : 25 ng/ul, Volume : 40 ul

Conc. :      ng/ul, Volume :      ul

APPROVED BY :

<http://dna.brc.riken.jp/index.html>



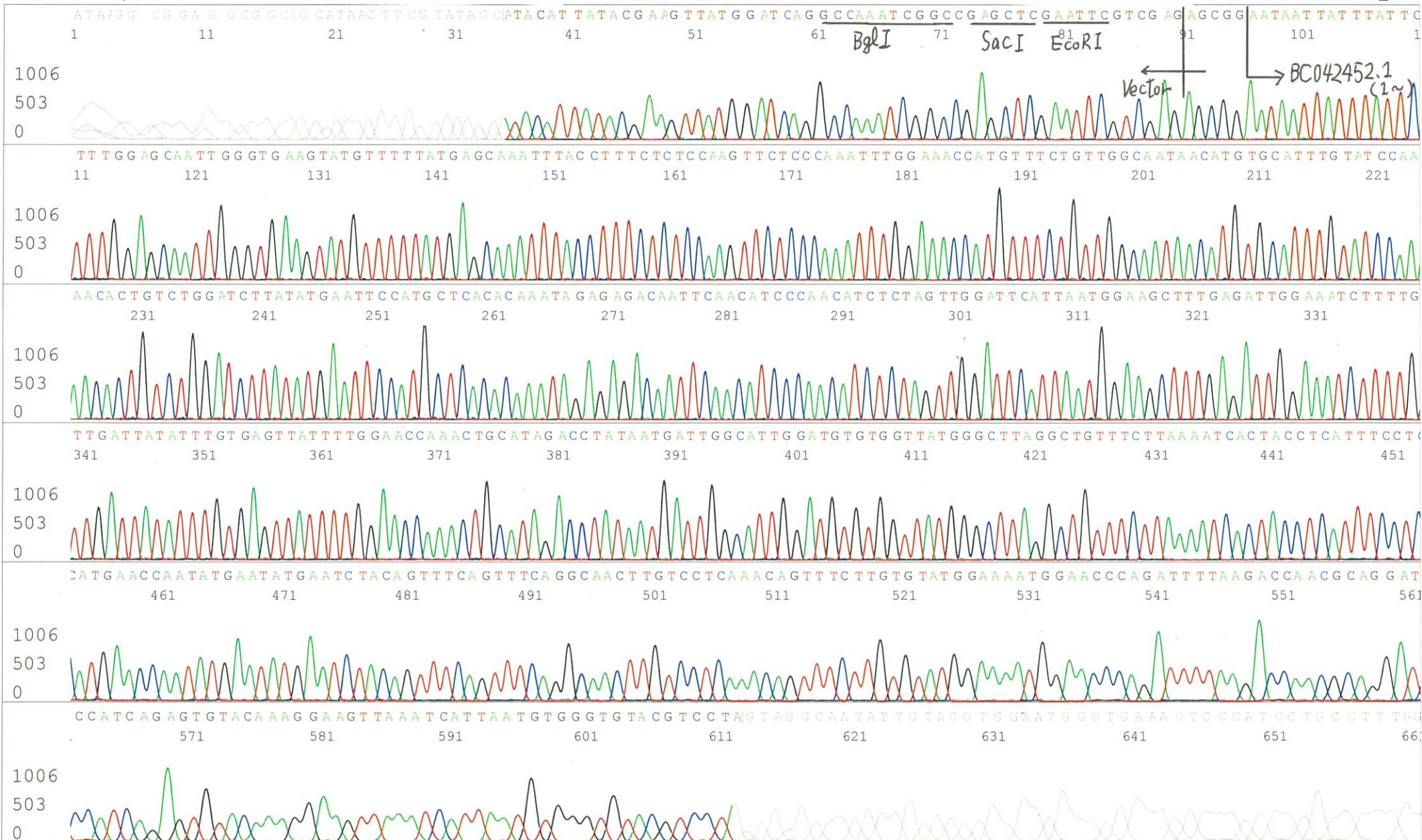
S/N G:150 A:169 T:151 C:152  
KB.bcp  
KB 1.4.1.8 Cap:13

Primer A : T7  
5' TAATACGACTCACTATAGGG 3'

7566\_IRAK071B10\_BOgd\_T7  
KB\_3500\_POP7\_BDTv3.mob  
Pts 1786 to 8425 Pk1 Loc:1754  
Version 6.0 HiSQV Bases: 671

Gray line indicates quality value  
(QV) < 40.

Jul 21,2020 02:01PM, JST  
Jul 21,2020 02:19PM, JST  
Spacing:10.0 Pts/Panel1350  
Plate Name: 20200721\_GNP



S/N G:268 A:326 T:199 C:19: Primer B : Reverse2

7566\_IRAK071B10\_B0Gd\_Reverse2

Jul 21,2020 02:01PM, JST

KB.bcp

KB\_3500\_POP7\_BDTv3.mob

Gray line indicates quality value

Jul 21,2020 02:19PM, JST

KB 1.4.1.8 Cap:16

5' GCGGATAACAATTTTCACACAGG 3'

Pts 1772 to 8425 Pk1 Loc:1740

(QV) < 40.

Spacing:10.03 Pts/Panel1350

Version 6.0 HiSQV Bases: 671

Plate Name: 20200721\_GNP

