

RIKEN Clone ID : IRAK069D22

Lot#: 7893_A7Ai

Vector : pCMV-SPORT6

Gene	PRPH	
Accession No.	BC032703.1	1905 bp
	<i>CDS</i>	1413 bp

● Plasmid DNA purification

Date : 170118

Culture : LB (100 ug/ml Ampicillin) 5 ml -> at 37 deg C over night

Date : 170119

Purification : QIAGEN Miniprep kit -> dH₂O 100 ul

● Digestion by restriction enzyme/Concentration calibration

Date : 170119

DNA concentration (O.D.): 92 ng/ul

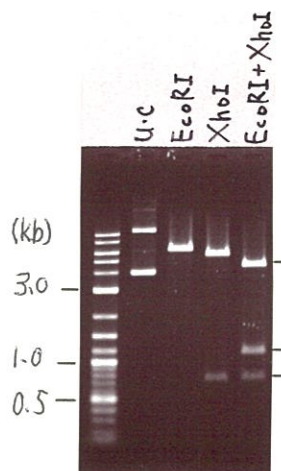
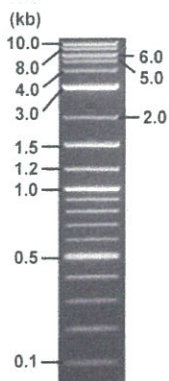
< Size of fragment expected from this clone >

DNA	1	ul
Enzyme (EcoRI + XhoI)	0.5 + 0.5	ul
Buffer H	1	ul
dH ₂ O	7	ul
Total	10	ul

EcoRI	6.2 kb
XhoI	5.4, 0.81 kb
EcoRI + XhoI	4.3kb (Vector) 1.1, 0.81kb

Erectrophoresis : 1% agarose gel, 1x TAE Buffer

Marker : 2-Log DNA Ladder (NEB#N3200L)



● Adjust plasmid DNA solution to 25 ng/ul

Date : 170126

● Confirmation of the insertion sequence

Date : 170124

DNA (<u>92</u> ng/ul)	80.0	ul
10x TE	29.4	ul
dH ₂ O	185.0	ul
Total	294.4	ul

Primer A	Reverse2
Primer B	M13
Primer C	poly(A) region primer #0
List of Sequencing Primers	http://dna.brc.riken.jp/en/GNPclone3en.html

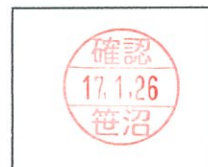
● Shipping

Conc. : 25 ng/ul, Volume : 40 ul

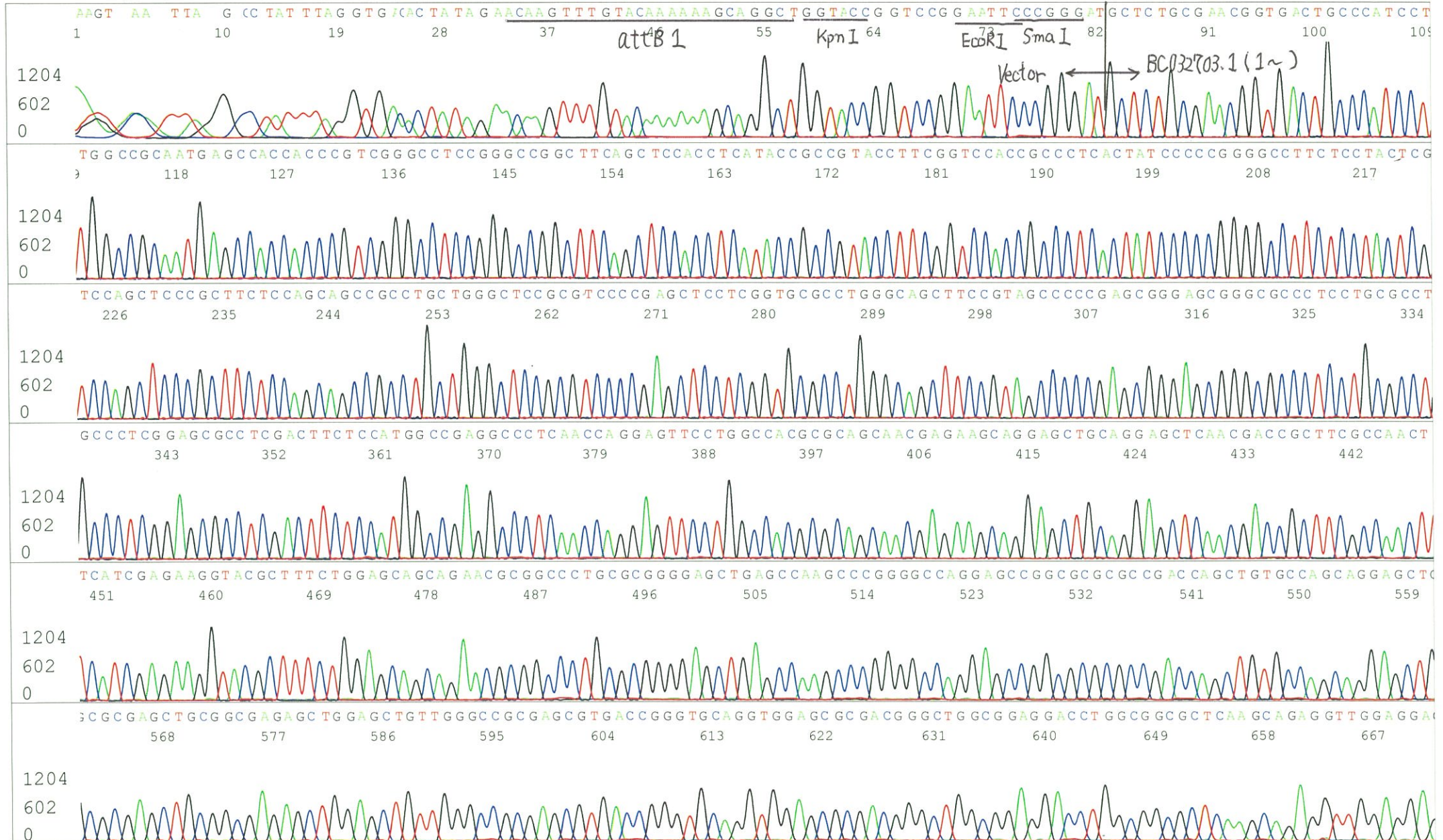
Conc. : ng/ul, Volume : ul

APPROVED BY :

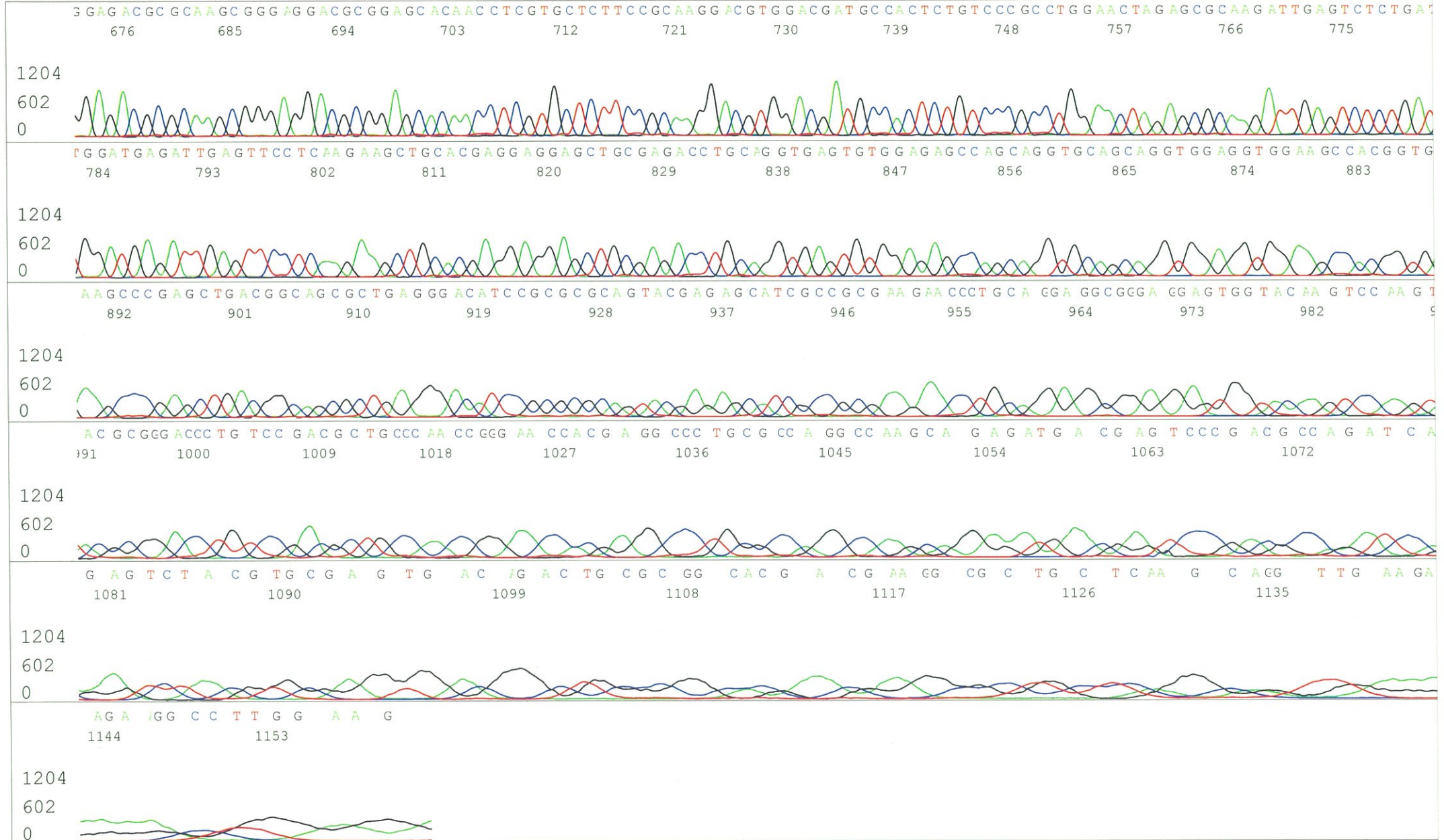
<http://dna.brc.riken.jp/index.html>



S/N G:348 A:463 T:349 C:875
KB.bcp
KB 1.4.1.8 Cap:14
Primer A : Reverse2
5' GCGGATAACAATTTTCACACAGG 3'



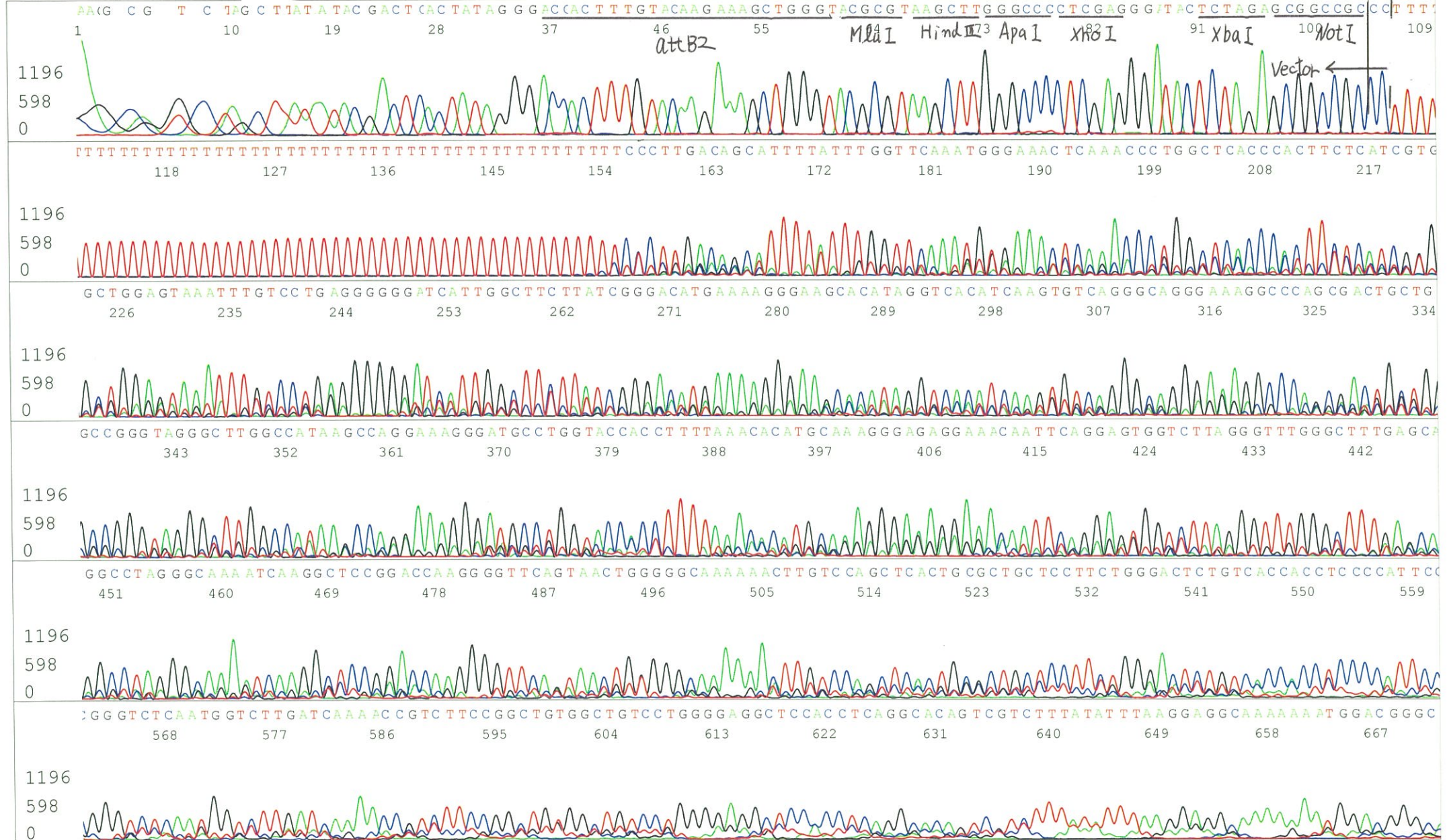
S/N G:348 A:463 T:349 C:875
KB.bcp
KB 1.4.1.8 Cap:14



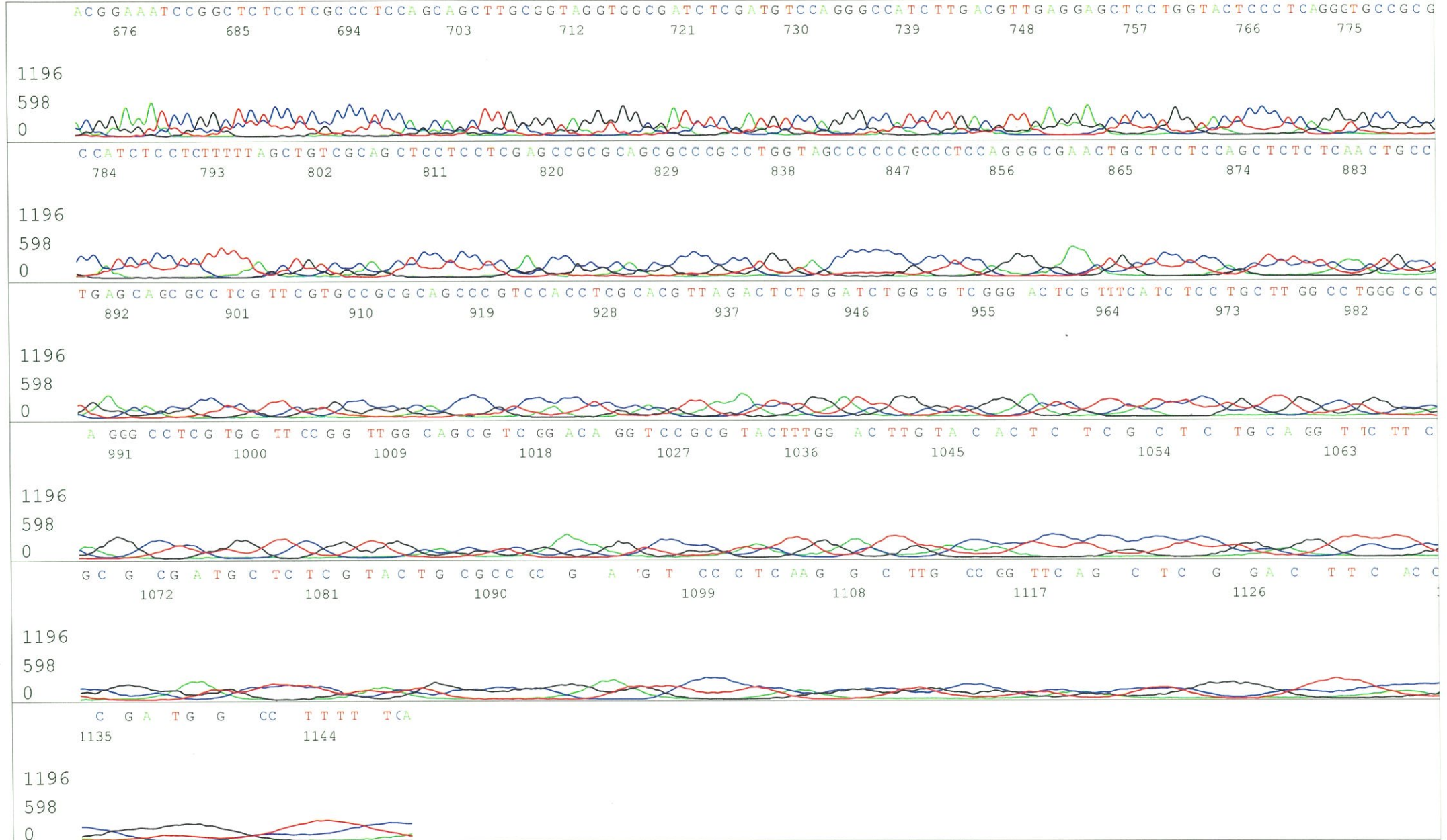
S/N G:198 A:256 T:286 C:403
KB.bcp
KB 1.4.1.8 Cap:17

Primer B : M13

5' GTTTTCCAGTCACGACGTTGTA 3'

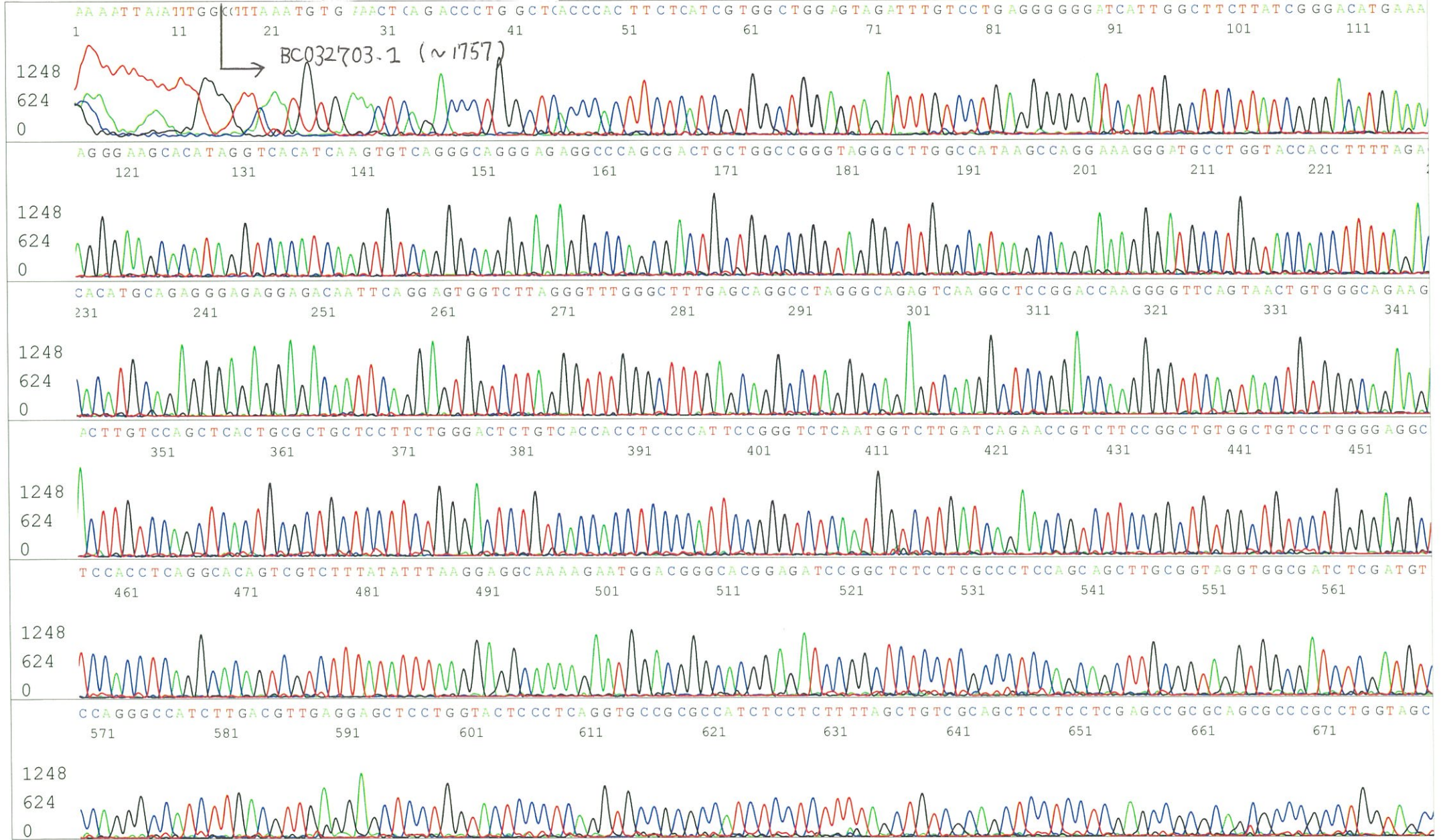


S/N G:198 A:256 T:286 C:403
KB.bcp
KB 1.4.1.8 Cap:17



S/N G:16 A:15 T:15 C:25
KB.bcp
KB 1.4.1.8 Cap:20

Primer C : Poly(A) region primer #0
5' TTTTTTTTTTTTTTTTTTTTTTNNN 3'



S/N G:16 A:15 T:15 C:25
KB.bcp
KB 1.4.1.8 Cap:20

