

RIKEN Clone ID : IRAK069A23

Lot#: 7893_A6Ak

Vector : pCMV-SPORT6

Gene	NR5A1	
Accession No.	BC032501.1	3119 bp
	<i>CDS</i>	1386 bp

● Plasmid DNA purification

Date : 160120

Culture : LB (100 ug/ml Ampicillin) 5 ml → at 37 deg C over night

Date : 160121

Purification : QIAGEN Miniprep kit → dH₂O 100 ul

● Digestion by restriction enzyme/Concentration calibration

Date : 160121

DNA concentration (O.D.): 204 ng/ul

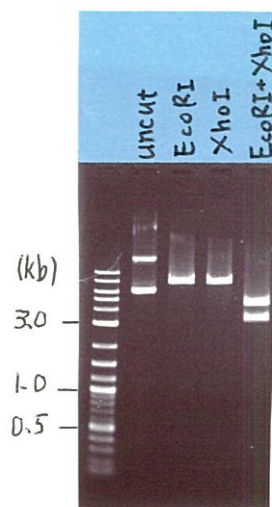
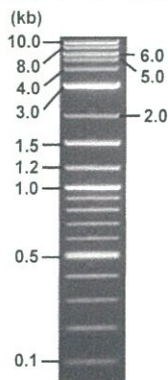
< Size of fragment expected from this clone >

DNA	0.4	ul
Enzyme (EcoRI + XhoI)	0.5 + 0.5	ul
Buffer H	1	ul
dH ₂ O	7.6	ul
Total	10	ul

EcoRI	7.5	kb
XhoI	7.5	kb
EcoRI + XhoI	4.3kb (Vector)	3.2 kb

Erectrophoresis : 1% agarose gel, 1x TAE Buffer

Marker : 2-Log DNA Ladder (NEB#N3200L)



● Adjust plasmid DNA solution to 25 ng/ul

Date : 160122

● Confirmation of the insertion sequence

Date : 160122

DNA (<u>204</u> ng/ul)	85.0	ul
10x TE	69.4	ul
dH ₂ O	539.2	ul
Total	693.6	ul

Primer A	Reverse2
Primer B	M13
Primer C	-
List of Sequencing Primers	http://dna.brc.riken.jp/en/GNPclone3en.html

● Shipping

Conc. : 25 ng/ul, Volume : 40 ul

Conc. : ng/ul, Volume : ul

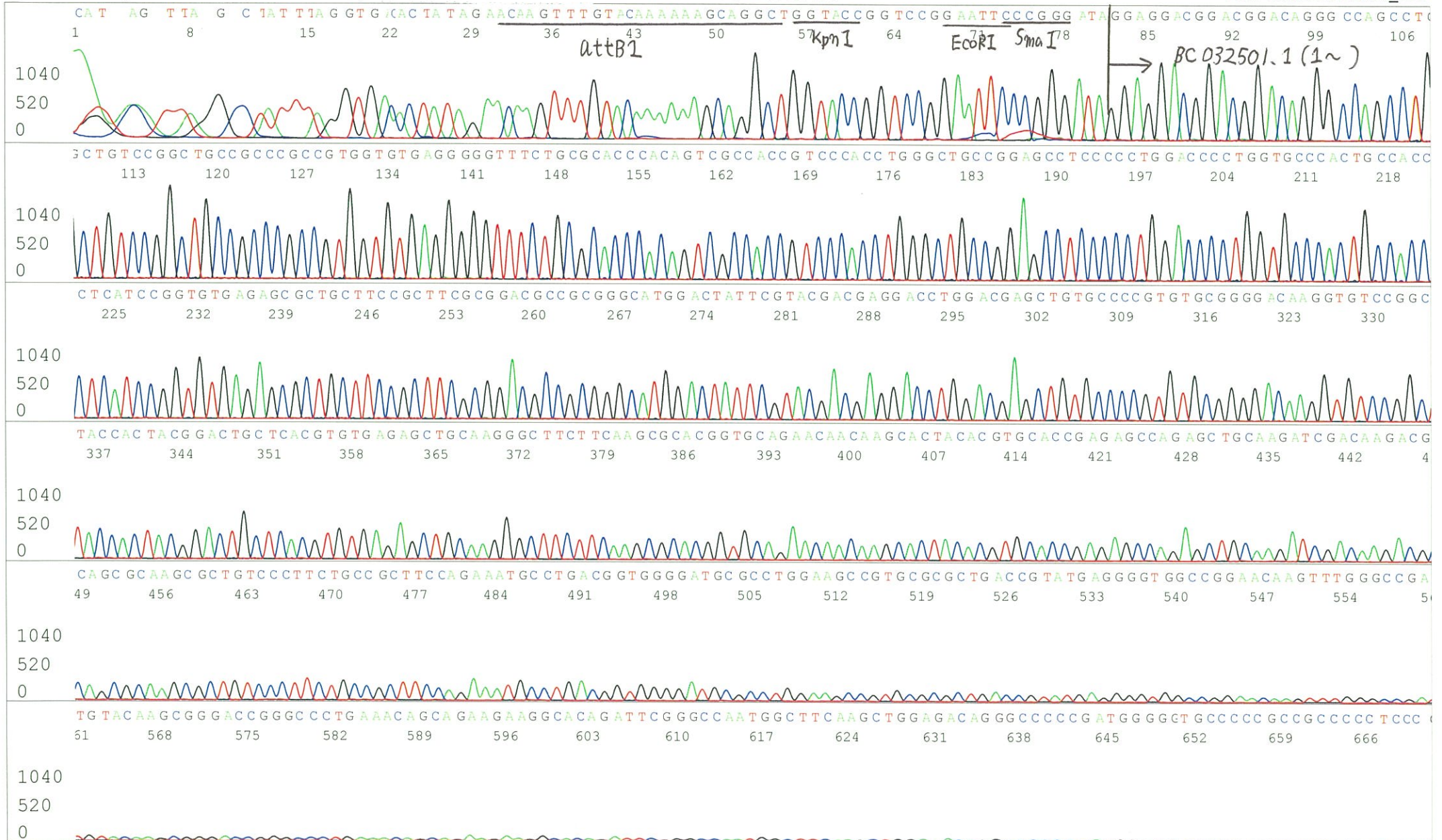
APPROVED BY :

<http://dna.brc.riken.jp/index.html>



S/N G:356 A:178 T:169 C:252
 KB.bcp
 KB 1.4.1.8 Cap:4

Primer A : Reverse2
 5' GCGGATAACAATTTTCACACAGG 3'



S/N G:356 A:178 T:169 C:252
KB.bcp
KB 1.4.1.8 Cap:4

IRAK069A23_A6Ak_Reverse2_B04_04
IRAK069A23_A6Ak_Reverse2
KB_3500_POP7_BDTV3.mob
Pts 1374 to 13000 Pk1 Loc:1351
Version 6.0 HiSQV Bases: 735

Inst Model/Name 3500/3500 Instrument
Jan 22,2016 10:22AM, JST
Jan 22,2016 10:47AM, JST
Spacing:11.73 Pts/Panel1350
Plate Name: 20160122_GNP



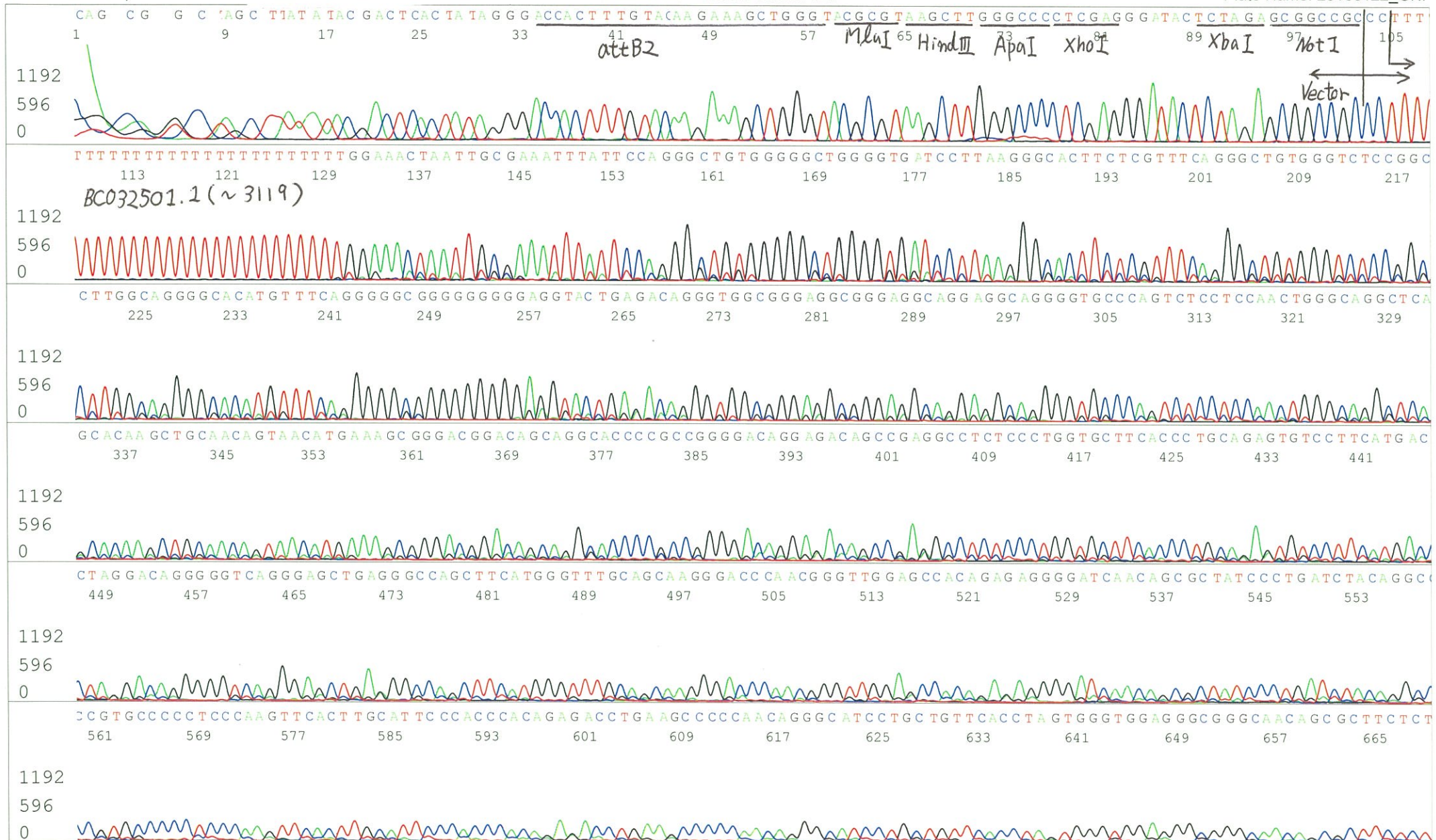
S/N G:402 A:253 T:263 C:307
KB.bcp
KB 1.4.1.8 Cap:7

Primer B : M13

5' GTTTTCCCAGTCACGACGTTGTA 3'

IRAK069A23_A6Ak_M13(-40)_C04_07
IRAK069A23_A6Ak_M13(-40)
KB_3500_POP7_BDTV3.mob
Pts 1380 to 13253 Pk1 Loc:1357
Version 6.0 HiSQV Bases: 928

Inst Model/Name 3500/3500 Instrument
Jan 22,2016 10:22AM, JST
Jan 22,2016 10:47AM, JST
Spacing:11.67 Pts/Panel1350
Plate Name: 20160122_GNP



S/N G:402 A:253 T:263 C:307
KB.bcp
KB 1.4.1.8 Cap:7

