

**RIKEN Clone ID : IRAK068J02**

Lot#: 7893\_A8B9

Vector : pCMV-SPORT6

|               |            |         |
|---------------|------------|---------|
| Gene          | SSTR1      |         |
| Accession No. | BC035618.1 | 4000 bp |
|               | <i>CDS</i> | 1176 bp |

● Plasmid DNA purification

Date : 180215

Culture : LB (100 ug/ml Ampicillin) 5 ml -> at 37 deg C over night

Date : 180216

Purification : QIAGEN Miniprep kit -> dH<sub>2</sub>O 100 ul

● Digestion by restriction enzyme/Concentration calibration

Date : 180216

DNA concentration (O.D.): 167 ng/ul

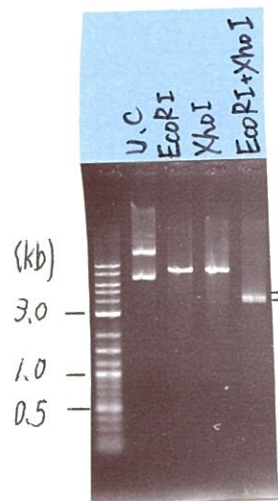
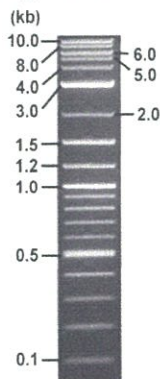
< Size of fragment expected from this clone >

|                       |               |
|-----------------------|---------------|
| DNA                   | <u>0.6</u> ul |
| Enzyme (EcoRI + XhoI) | 0.5 + 0.5 ul  |
| Buffer H              | 1 ul          |
| dH <sub>2</sub> O     | <u>7.4</u> ul |
| Total                 | 10 ul         |

|              |                            |
|--------------|----------------------------|
| EcoRI        | 8.3 kb                     |
| XhoI         | 8.3 kb                     |
| EcoRI + XhoI | 4.3kb (Vector)      4.0 kb |

Electrophoresis : 1% agarose gel, 1x TAE Buffer

Marker : 2-Log DNA Ladder (NEB#N3200L)



● Adjust plasmid DNA solution to 25 ng/ul

Date : 180306

|                         |                 |
|-------------------------|-----------------|
| DNA ( <u>167</u> ng/ul) | <u>80.0</u> ul  |
| 10x TE                  | <u>53.4</u> ul  |
| dH <sub>2</sub> O       | <u>401.0</u> ul |
| Total                   | <u>534.4</u> ul |

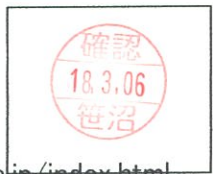
● Confirmation of the insertion sequence

Date : 180227

|  |   |
|--|---|
| Primer A                                     | Reverse2  |
| Primer B                                     | M13   |
| Primer C : Poly(A) region primer # <u>35</u> |   |
| List of Sequencing Primers                   | <a href="http://dna.brc.riken.jp/en/GNPclone3en.html">http://dna.brc.riken.jp/en/GNPclone3en.html</a> |

● Shipping

Conc. : 25 ng/ul, Volume : 40 ul  
 Conc. :      ng/ul, Volume :      ul



APPROVED BY : <http://dna.brc.riken.jp/index.html>

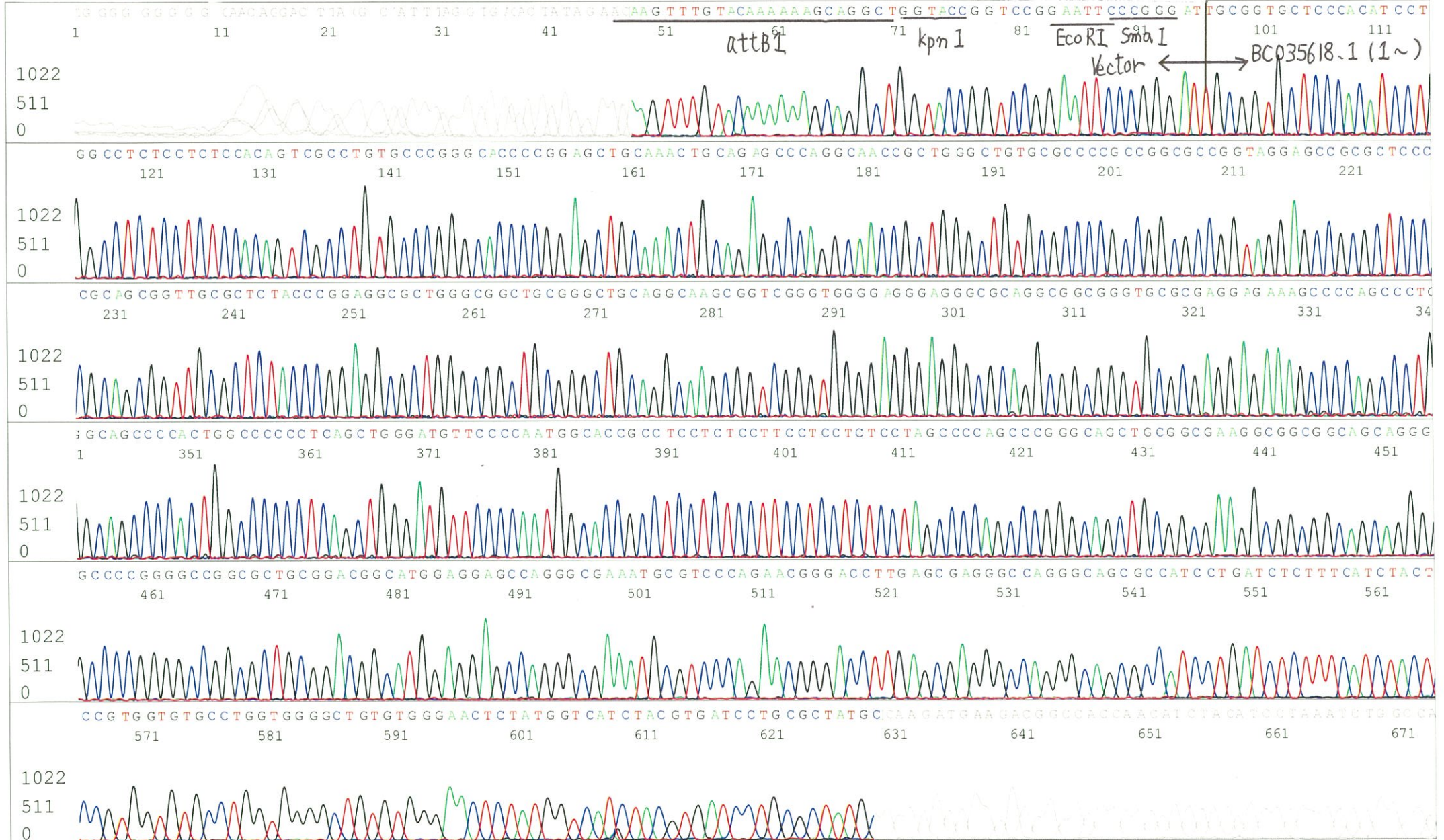
S/N G:95 A:69 T:60 C:151  
KB.bcp  
KB 1.4.1.8 Cap:9

Primer A : Reverse2  
5' GCGGATAACAATTTTCACACAGG 3'

IRAK068J02\_A8B9\_Reverse2  
KB\_3500\_POP7\_BDTv3.mob  
Pts 1669 to 8706 Pk1 Loc:1637  
Version 6.0 HiSQV Bases: 708

Gray line indicates quality value  
(QV) < 40.

Feb 26,2018 10:07AM, JST  
Feb 26,2018 10:23AM, JST  
Spacing:10.75 Pts/Panel1350  
Plate Name: 20180226\_GNP



S/N G:97 A:170 T:168 C:135

Primer B : M13

IRAK068J02\_A8B9\_M13

Feb 26,2018 10:07AM, JST

KB.bcp

KB\_3500\_POP7\_BDTv3.mob

Gray line indicates quality value

Feb 26,2018 10:23AM, JST

KB 1.4.1.8 Cap:12

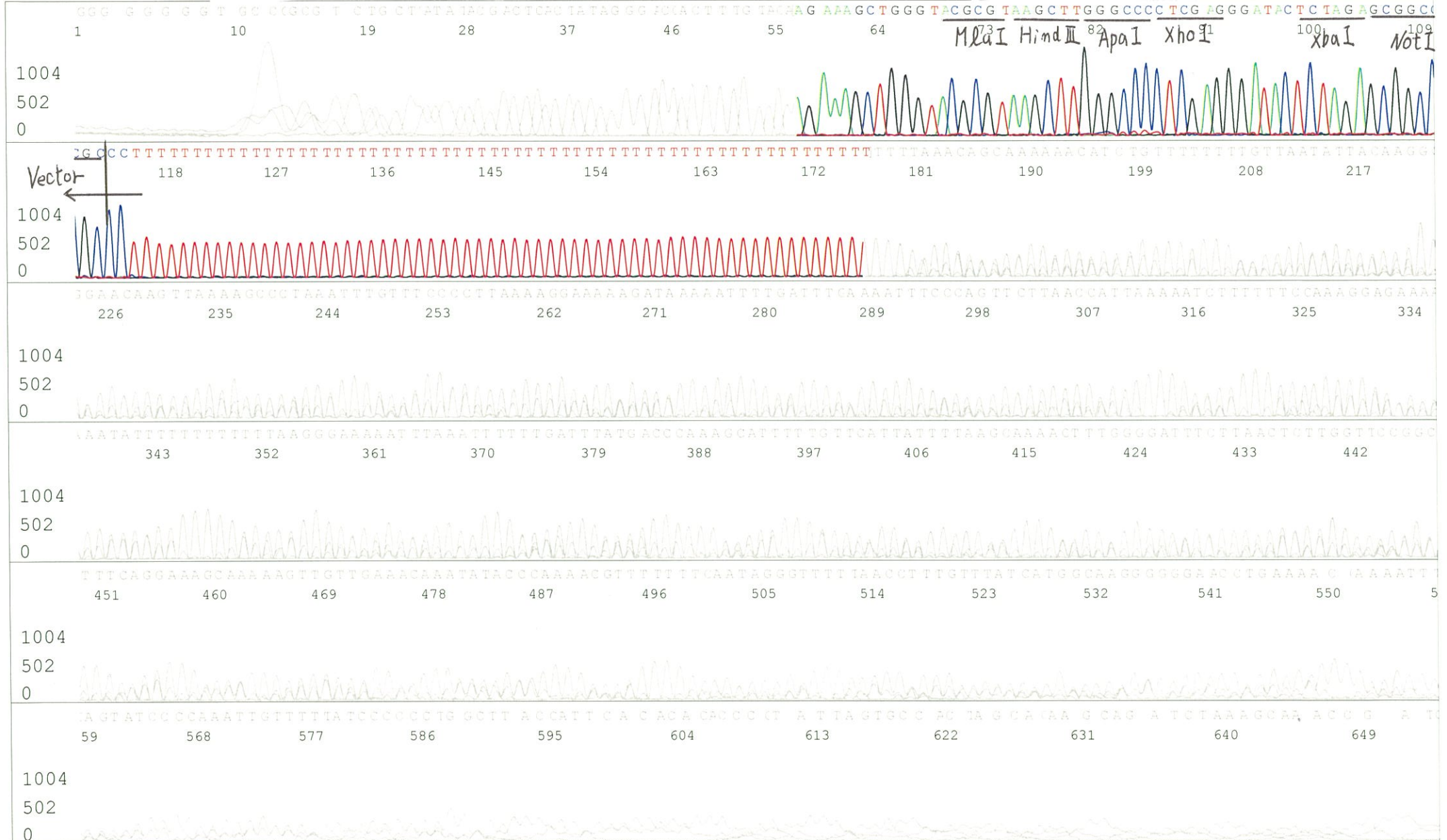
5' GTTTTCCCAGTCACGACGTTGTA 3'

Pts 1662 to 8706 Pk1 Loc:1630

(QV) < 40.

Spacing:10.76 Pts/Panel1350

Plate Name: 20180226\_GNP



S/N G:327 A:452 T:281 C:215  
KB.bcp  
KB 1.4.1.8 Cap:2

Primer C : Poly(A) region primer #35  
5' TTTTTTTTTTTTTTTTTTTTTT AAC 3'

Gray line indicates quality value  
(QV) < 40.

