

RIKEN Clone ID : IRAK064O22

Lot#: 7893_A7H3

Vector : pCMV-SPORT6

Gene	CLDN5	
Accession No.	BC032363.1	1405 bp
	<i>CDS</i>	657 bp

● Plasmid DNA purification

Date : 170807

Culture : LB (100 ug/ml Ampicillin) 5 ml → at 37 deg C over night

Date : 170808

Purification : QIAGEN Miniprep kit → dH₂O 100 ul

● Digestion by restriction enzyme/Concentration calibration

Date : 170808

DNA concentration (O.D.): 261 ng/ul

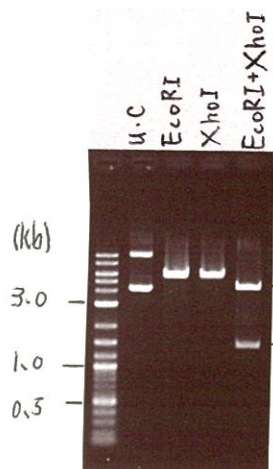
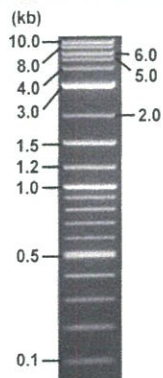
< Size of fragment expected from this clone >

DNA	0.35	ul
Enzyme (EcoRI + XhoI)	0.5 + 0.5	ul
Buffer H	1	ul
dH ₂ O	7.65	ul
Total	10	ul

EcoRI	5.7 kb
XhoI	5.7 kb
EcoRI + XhoI	4.3kb (Vector) 1.4 kb

Electrophoresis : 1% agarose gel, 1x TAE Buffer

Marker : 2-Log DNA Ladder (NEB#N3200L)



● Adjust plasmid DNA solution to 25 ng/ul

Date : 170821

DNA (<u>261</u> ng/ul)	<u>86.0</u> ul
10x TE	<u>89.7</u> ul
dH ₂ O	<u>722.1</u> ul
Total	<u>897.8</u> ul

● Confirmation of the insertion sequence

Date : 170817

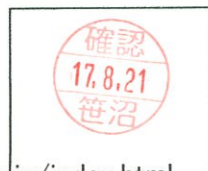
Primer A	Reverse2
Primer B	M13
Primer C	poly(A) region primer #0
List of Sequencing Primers	http://dna.brc.riken.jp/en/GNPclone3en.html

● Shipping

Conc. : 25 ng/ul, Volume : 40 ul

Conc. : ng/ul, Volume : ul

APPROVED BY : <http://dna.brc.riken.jp/index.html>



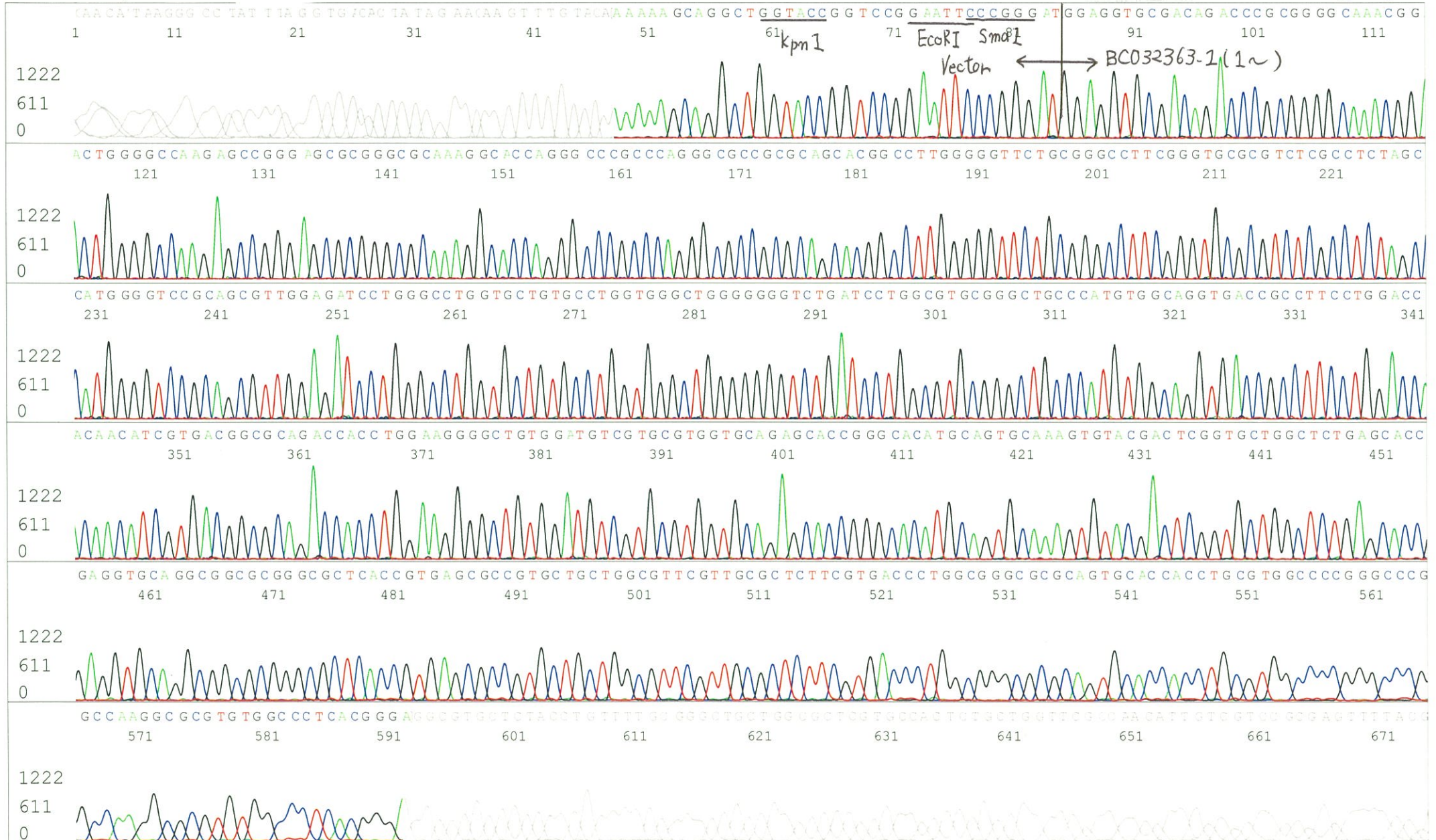
S/N G:98 A:53 T:66 C:125
KB.bcp
KB 1.4.1.8 Cap:6

Primer A : Reverse2
5' GCGGATAACAATTTACACACAGG 3'

IRAK064O22_A7H3_Reverse2_F07_06_ABI08
IRAK064O22_A7H3_Reverse2
KB_3500_POP7_BDTv3.mob
Pts 1660 to 8589 Pk1 Loc:1628
Version 6.0 HiSQV Bases: 713

Gray line indicates quality value
(QV) < 40.

Inst Model/Name 3500/3500 Instrument
Aug 17,2017 08:16PM, JST
Aug 17,2017 08:30PM, JST
Spacing:10.55 Pts/Panel1350
ite Name: 20170817_MGE_GNP



S/N G:13 A:9 T:9 C:15

Primer C : Poly(A) region primer #0

IRAK064O22_A7H3_GNPmixture

KB_3500_POP7_BDTv3.mob

Aug 17, 2017 08:16PM, JST

KB.bcp

Pts 1685 to 8530 Pk1 Loc:1653

Gray line indicates quality value

Aug 17, 2017 08:30PM, JST

KB 1.4.1.8 Cap:8

5' TTTTTTTTTTTTTTTTTTTNNN 3'

Version 6.0 HiSQV Bases: 670

(QV) < 40.

late Name: 20170817_MGE_GNP

