

RIKEN Clone ID : IRAK063M10

Vector : pBluescriptR

Gene	TRAF5	
Accession No.	BC029600.1	1841 bp
	<i>CDS</i>	1674 bp

● Plasmid DNA purification

Date : 22-07-20

Culture : LB (100 ug/ml Ampicillin) 5 ml -> at 37 deg C over night

Date : 22-07-21

Purification : QIAGEN Miniprep kit -> dH₂O 100 ul

● Digestion by restriction enzyme/Concentration calibration

Date : 22-07-21

DNA concentration (O.D.): 45 ng/ul

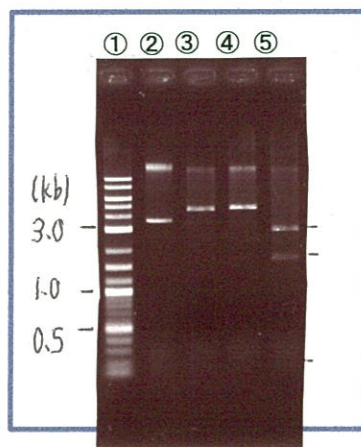
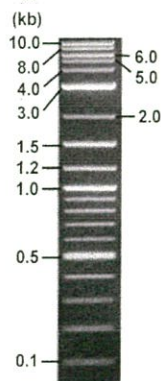
< Size of fragment expected from this clone >

DNA	2.2 ul
Enzyme (EcoRI + BamHI)	0.5 + 0.5 ul
Buffer H	1 ul
dH ₂ O	5.8 ul
Total	10 ul

EcoRI	4.5, 0.1 kb
BamHI	4.6 kb
EcoRI + BamHI	2.8kb (Vector) 1.7, 0.1 kb

Electrophoresis : 1% agarose gel, 1x TAE Buffer

Marker : 2-Log DNA Ladder (NEB#N3200L)



- ①:Marker
- ②:uncut
- ③:EcoRI
- ④:BamHI
- ⑤:EcoRI + BamHI

● Adjust plasmid DNA solution to 25 ng/ul

Date : 22.08.02

DNA (<u>45</u> ng/ul)	72.0 ul
10x TE	12.9 ul
dH ₂ O	44.7 ul
Total	129.6 ul

● Confirmation of the insertion sequence

Date : 22,07,26

Primer A	T7
Primer B	Reverse2
Primer C	-
List of Sequencing Primers	http://dna.brc.riken.jp/en/GNPclone3en.html

● Shipping

Conc. : 25 ng/ul, Volume : 40 ul

Conc. : ng/ul, Volume : ul

APPROVED BY :

<http://dna.brc.riken.jp/index.html>



S/N G:18 A:19 T:12 C:18
KB.bcp
KB 1.4.1.8 Cap:2

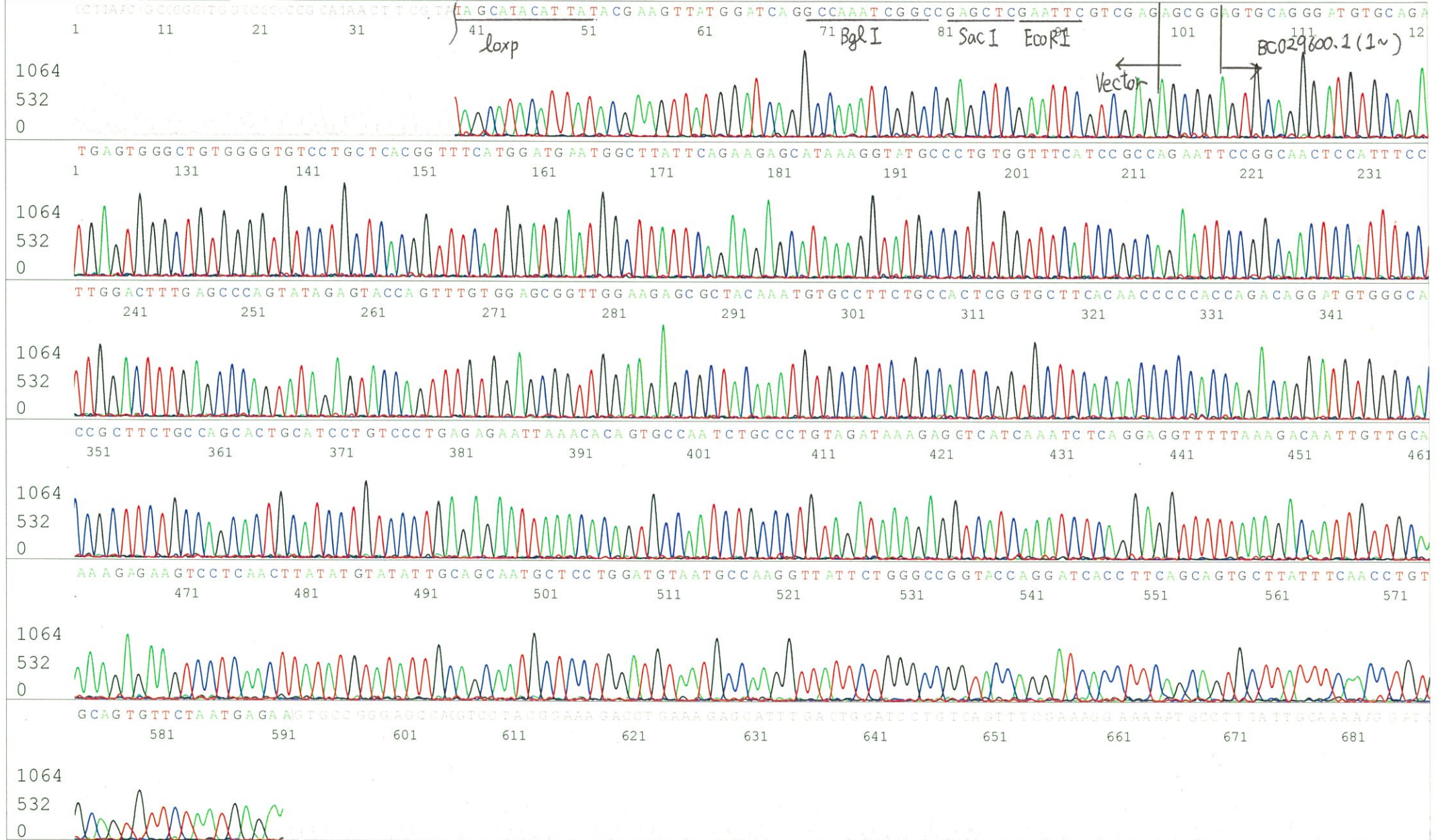
Primer A : T7

5' TAATACGACTCACTATAGGG 3'

7566_IRAK063M10_B2Gj_2_T7-_A02_02_ABI24
7566_IRAK063M10_B2Gj_2_T7-
KB_3500_POP7_BDTv3.mob
Pts 1666 to 8705 Pk1 Loc:1634
Version 6.0 HiSQV Bases: 666

Gray line indicates quality value
(QV) < 40.

Inst Model/Name 3500/3500 Instrument
Jul 26,2022 10:30AM, JST
Jul 26,2022 10:54AM, JST
Spacing:11.12 Pts/Panel1350
Plate Name: 20220726_GNP



S/N G:10 A:12 T:8 C:12

7566_IRAK063M10_B2Gj_2_Reverse2-

Jul 26, 2022 10:30AM, JST

KB.bcp

Primer B : Reverse2

KB_3500_POP7_BDTv3.mob

Gray line indicates quality value

Jul 26, 2022 10:54AM, JST

KB 1.4.1.8 Cap:5

5' GCGGATAACAATTTTCACACAGG 3'

Pts 1639 to 8705 Pk1 Loc:1607

(QV) < 40.

Spacing:11.04 Pts/Panel1350

Plate Name: 20220726_GNP

