

RIKEN Clone ID : IRAK062J20

Lot#: 7893_A6II

Vector : pCMV-SPORT6

Gene	CASP8	
Accession No.	BC028223.2	2343 bp
	<i>CDS</i>	- bp

● Plasmid DNA purification

Date : 16 10 03

Culture : LB (100 ug/ml Ampicillin) 5 ml -> at 37 deg C over night

Date : 16 10 04

Purification : QIAGEN Miniprep kit -> dH₂O 100 ul

● Digestion by restriction enzyme/Concentration calibration

Date : 16 10 04

DNA concentration (O.D.): 164 ng/ul

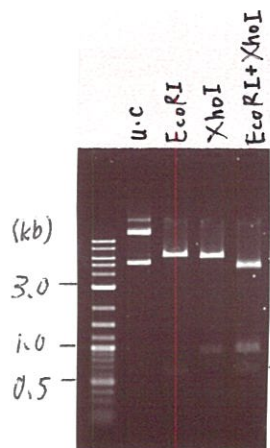
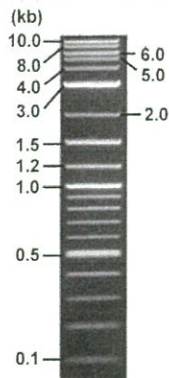
< Size of fragment expected from this clone >

DNA	0.5	ul
Enzyme (EcoRI + XhoI)	0.5 + 0.5	ul
Buffer H	1	ul
dH ₂ O	7.5	ul
Total	10	ul

EcoRI	6.1, 0.59 kb
XhoI	5.8, 0.90 kb
EcoRI + XhoI	4.3kb (Vector) 0.90, 0.90, 0.59 kb

Electrophoresis : 1% agarose gel, 1x TAE Buffer

Marker : 2-Log DNA Ladder (NEB#N3200L)



● Adjust plasmid DNA solution to 25 ng/ul

Date : 16/10/05

● Confirmation of the insertion sequence

Date : 16/10/04

DNA (<u>164</u> ng/ul)	<u>84.0</u>	ul
10x TE	<u>55.1</u>	ul
dH ₂ O	<u>411.9</u>	ul
Total	<u>551.0</u>	ul

Primer A	Reverse2
Primer B	M13
Primer C	poly(A) region primer #0
List of Sequencing Primers	http://dna.brc.riken.jp/en/GNPclone3en.html

● Shipping

Conc. : 25 ng/ul, Volume : 40 ul

Conc. : ng/ul, Volume : ul

APPROVED BY :

<http://dna.brc.riken.jp/index.html>



S/N G:606 A:793 T:571 C:615

Primer A : Reverse2

IRAK062J20_A6II_Reverse2

Oct 04,2016 04:37PM, JST

KB.bcp

KB_3500_POP7_BDTv3.mob

Oct 04,2016 05:03PM, JST

KB 1.4.1.8 Cap:11

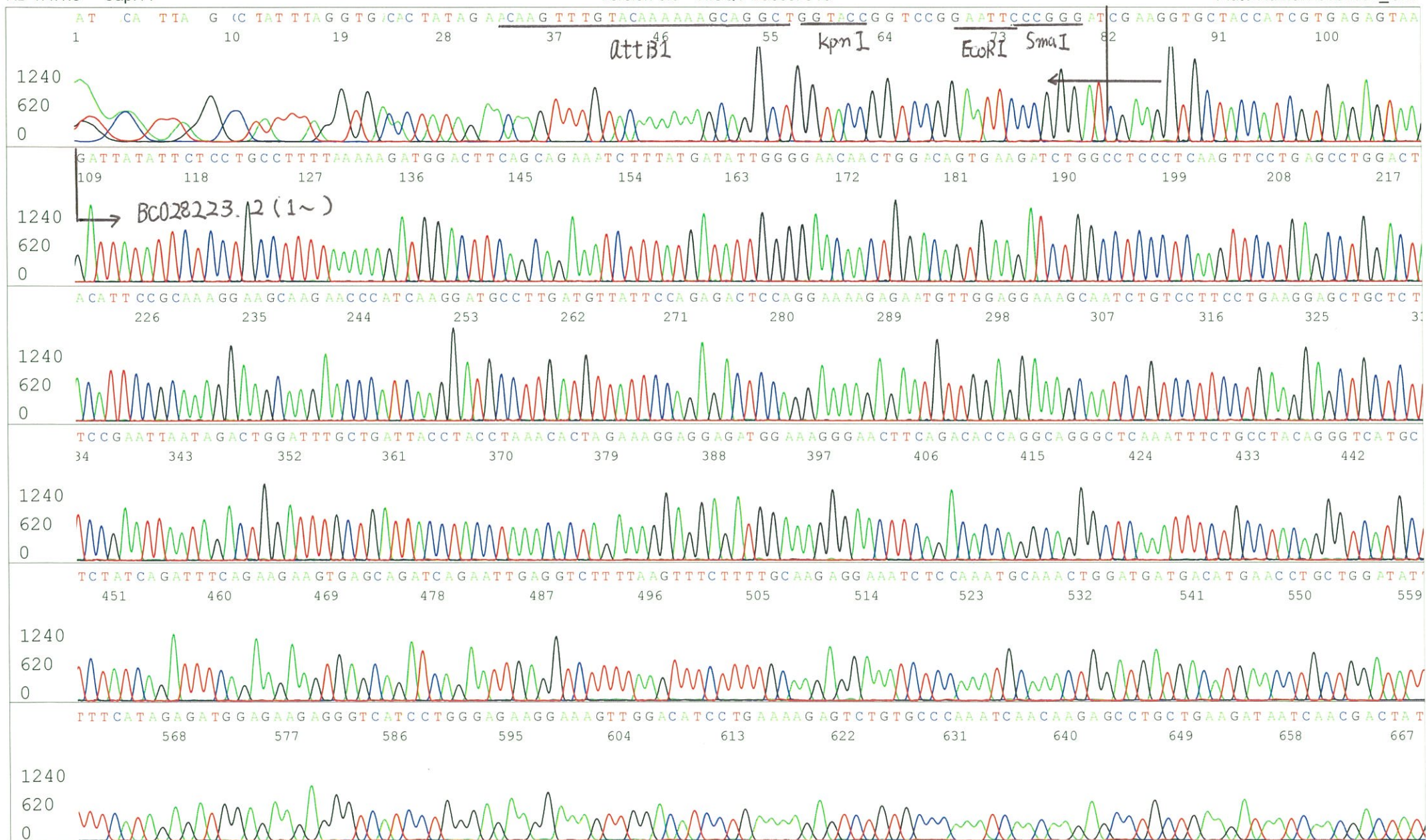
5' GCGGATAACAATTTTCACACAGG 3'

Pts 1535 to 12451 Pk1 Loc:1512

Spacing:11.0 Pts/Panel1350

Version 6.0 HiSQV Bases: 918

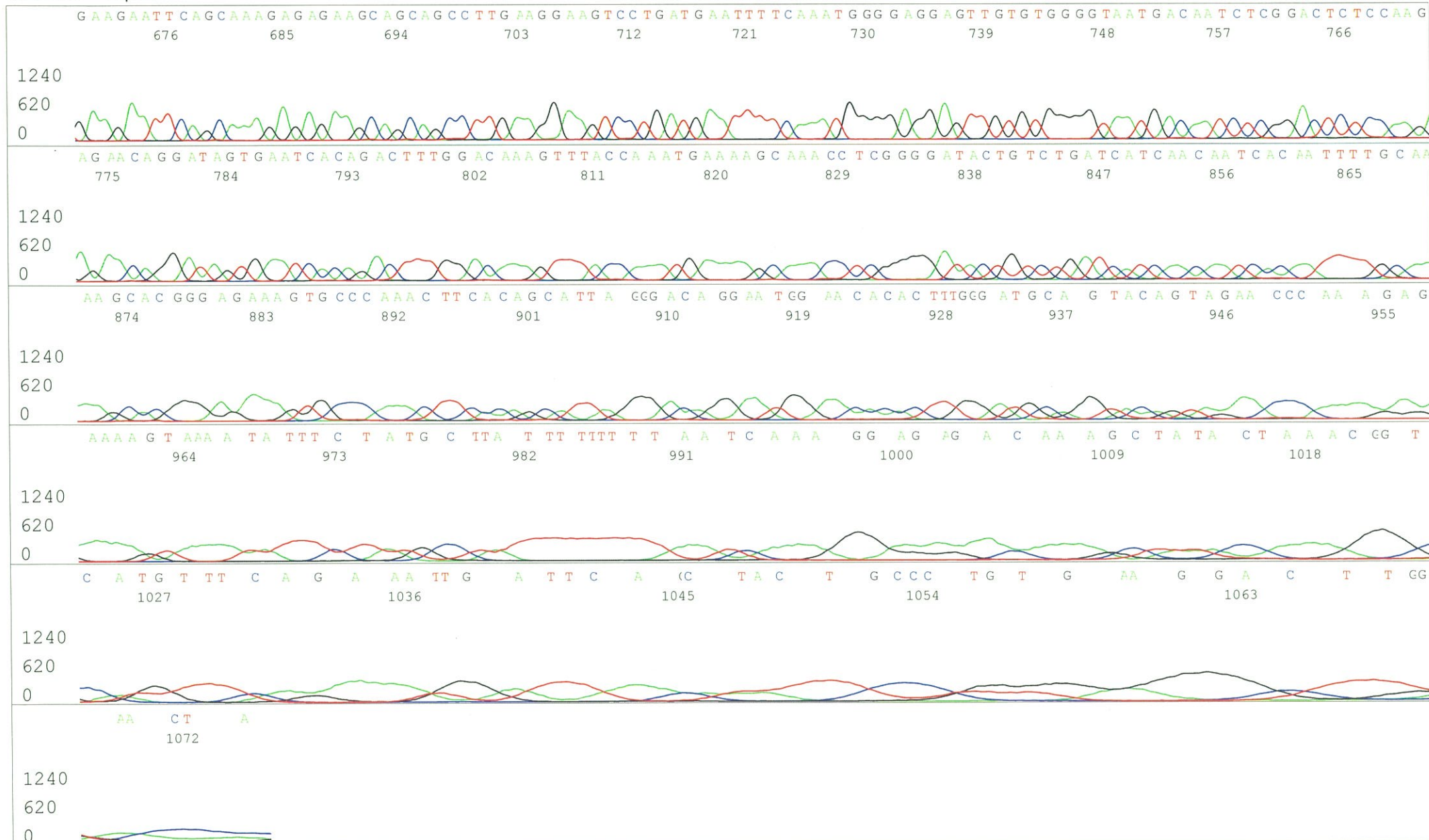
Plate Name: 20161004_GNP



S/N G:606 A:793 T:571 C:615
KB.bcp
KB 1.4.1.8 Cap:11

IRAK062J20_A6II_Reverse2_D02_11_ABI24
IRAK062J20_A6II_Reverse2
KB_3500_POP7_BDTv3.mob
Pts 1535 to 12451 Pk1 Loc:1512
Version 6.0 HiSQV Bases: 918

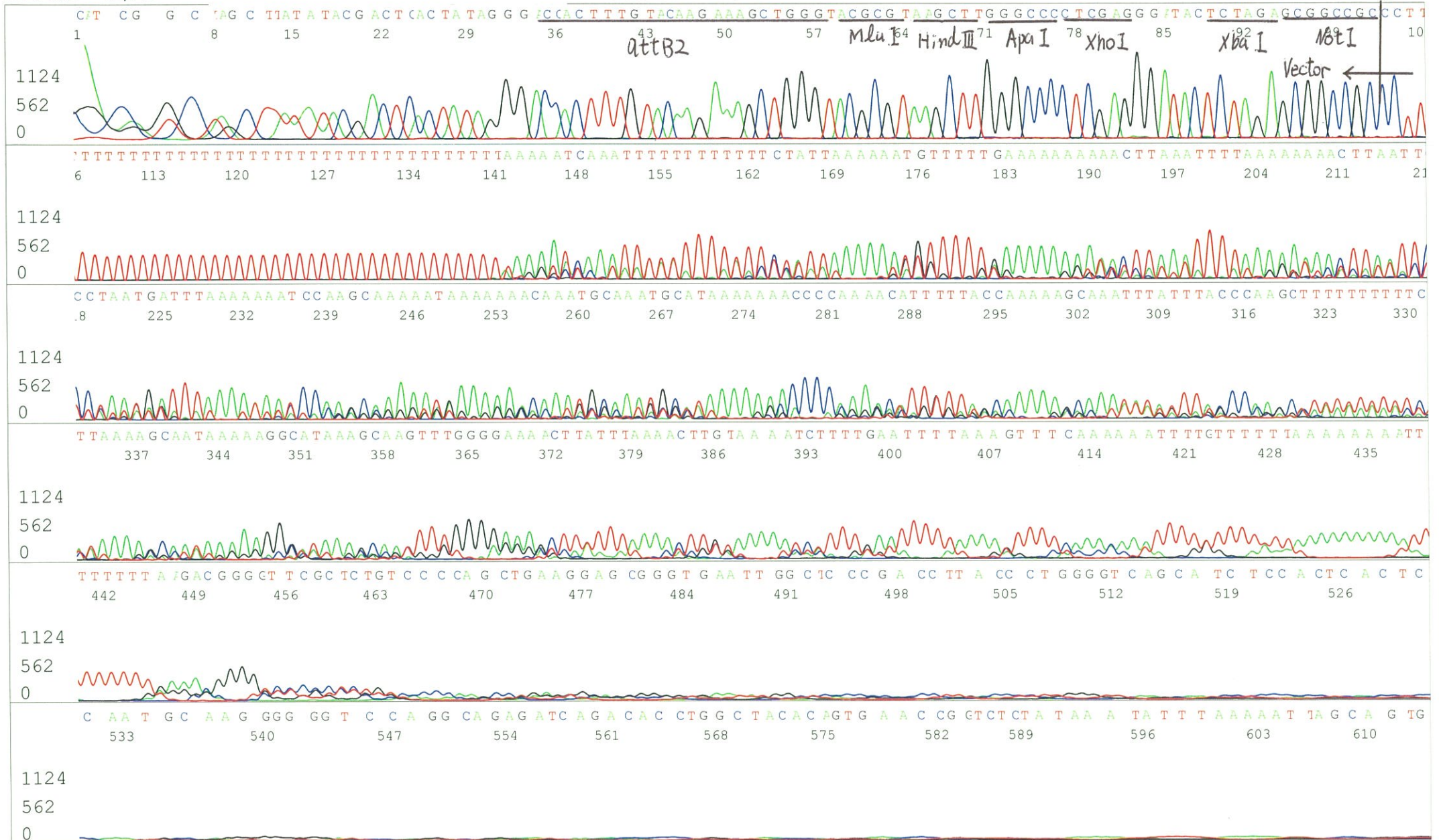
Inst Model/Name 3500/3500 Instrument
Oct 04,2016 04:37PM, JST
Oct 04,2016 05:03PM, JST
Spacing:11.0 Pts/Panel1350
Plate Name: 20161004_GNP



S/N G:184 A:294 T:302 C:23
 KB.bcp
 KB 1.4.1.8 Cap:14

Primer B : M13

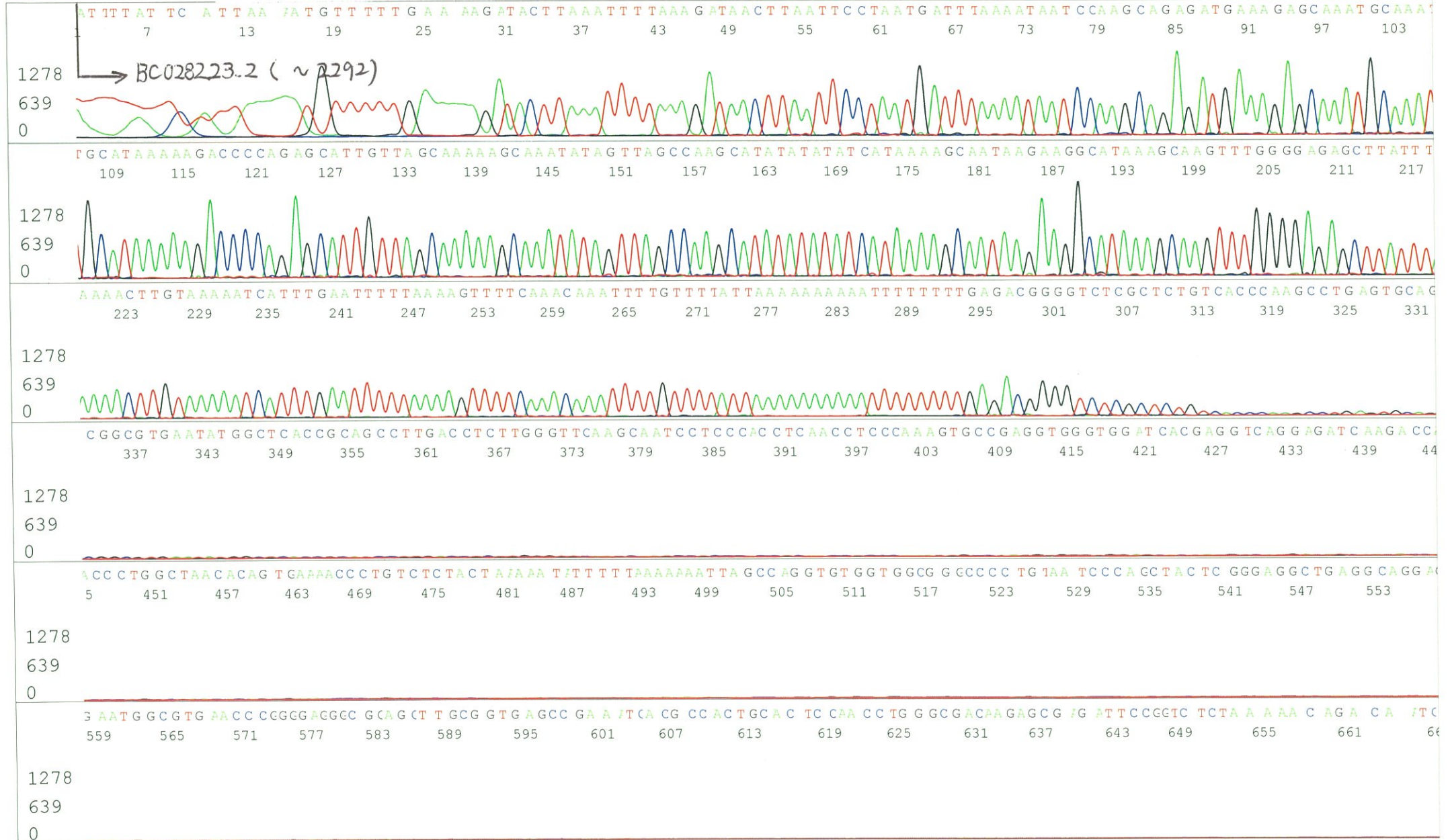
5' GTTTTTCCCAGTCACGACGTTGTA 3'



S/N G:184 A:294 T:302 C:236
KB.bcp
KB 1.4.1.8 Cap:14



S/N G:298 A:423 T:335 C:21
KB.bcp
KB 1.4.1.8 Cap:17
Primer C : Poly(A) region primer #0
5' TTTTTTTTTTTTTTTTTTTTTTNNN 3'



S/N G:298 A:423 T:335 C:217
KB.bcp
KB 1.4.1.8 Cap:17

