

RIKEN Clone ID : IRAK051P21

Lot#: 7893_A7Cf

Vector : pCMV-SPORT6

Gene	SIGLEC5	
Accession No.	BC029896.1	2038 bp
	<i>CDS</i>	1656 bp

● Plasmid DNA purification

Date : 170315

Culture : LB (100 ug/ml Ampicillin) 5 ml -> at 37 deg C over night

Date : 170316

Purification : QIAGEN Miniprep kit -> dH₂O 100 ul

● Digestion by restriction enzyme/Concentration calibration

Date : 170316

DNA concentration (O.D.): 78 ng/ul

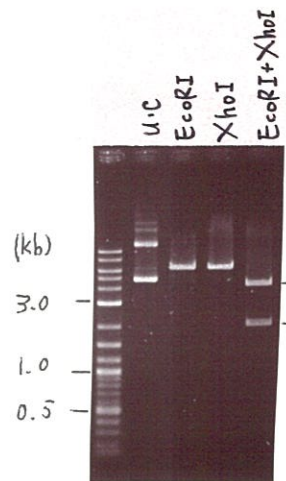
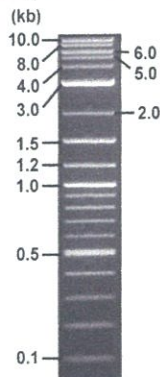
< Size of fragment expected from this clone >

DNA	1.2	ul
Enzyme (EcoRI + XhoI)	0.5 + 0.5	ul
Buffer H	1	ul
dH ₂ O	6.8	ul
Total	10	ul

EcoRI	6.4	kb
XhoI	6.4	kb
EcoRI + XhoI	4.3kb (Vector)	2.1 kb

Electrophoresis : 1% agarose gel, 1x TAE Buffer

Marker : 2-Log DNA Ladder (NEB#N3200L)



● Adjust plasmid DNA solution to 25 ng/ul

Date : 170322

DNA (<u>78</u> ng/ul)	<u>77.0</u>	ul
10x TE	<u>24.0</u>	ul
dH ₂ O	<u>139.2</u>	ul
Total	240.2	ul

● Confirmation of the insertion sequence

Date : 170322

Primer A	Reverse2
Primer B	M13
Primer C : Poly(A) region primer #17	
List of Sequencing Primers	http://dna.brc.riken.jp/en/GNPclone3en.html

● Shipping

Conc. : 25 ng/ul, Volume : 40 ul

Conc. : ng/ul, Volume : ul



APPROVED BY :

<http://dna.brc.riken.jp/index.html>

S/N G:177 A:195 T:160 C:223

Primer A : Reverse2

IRAK051P21_A7Cf_Reverse2

Mar 21,2017 10:19AM, JST

KB.bcp

KB_3500_POP7_BDTv3.mob

Mar 21,2017 10:45AM, JST

KB 1.4.1.8 Cap:12

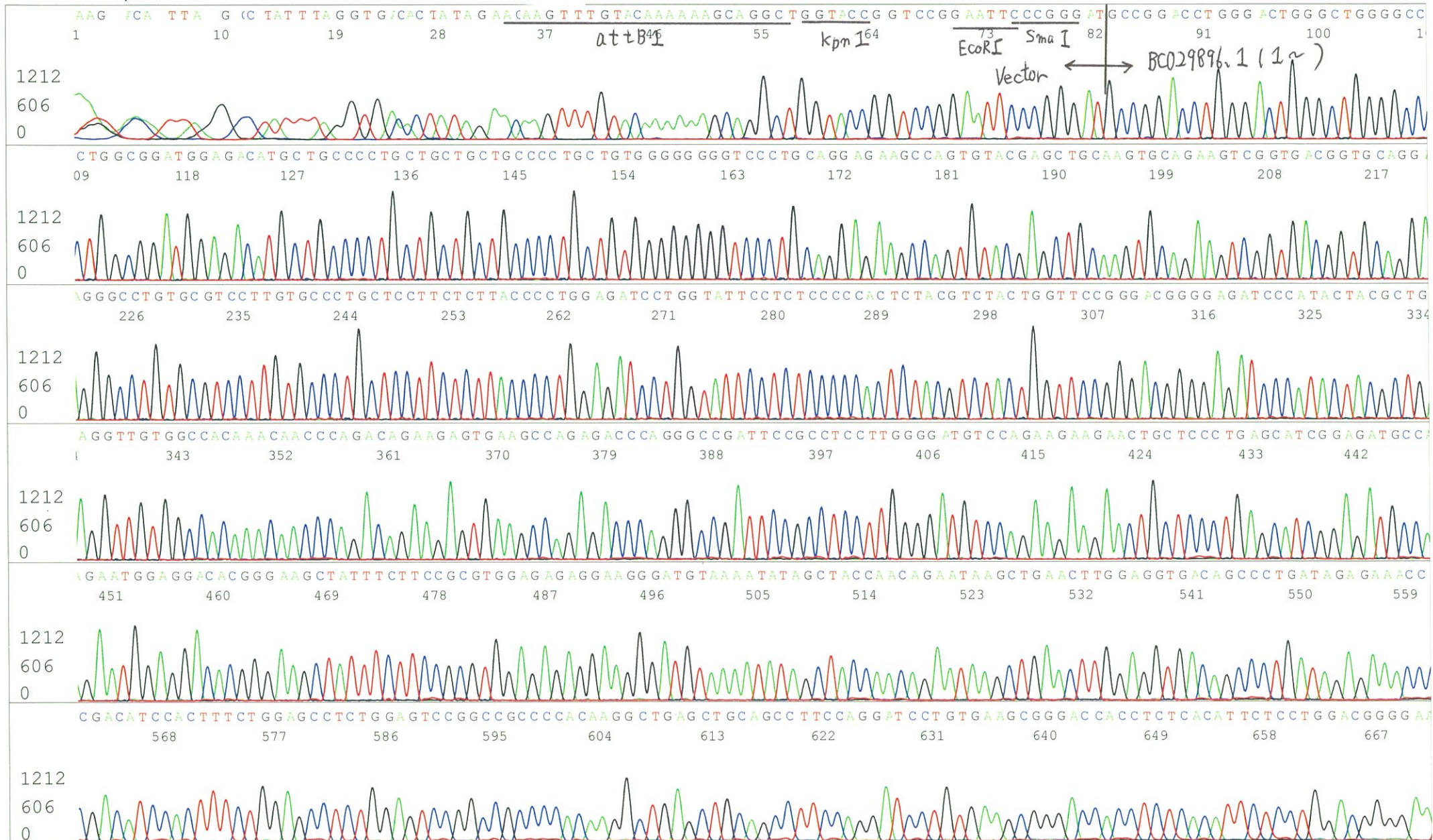
5' GCGGATAACAATTTTCACACAGG 3'

Pts 1524 to 13327 Pk1 Loc:1501

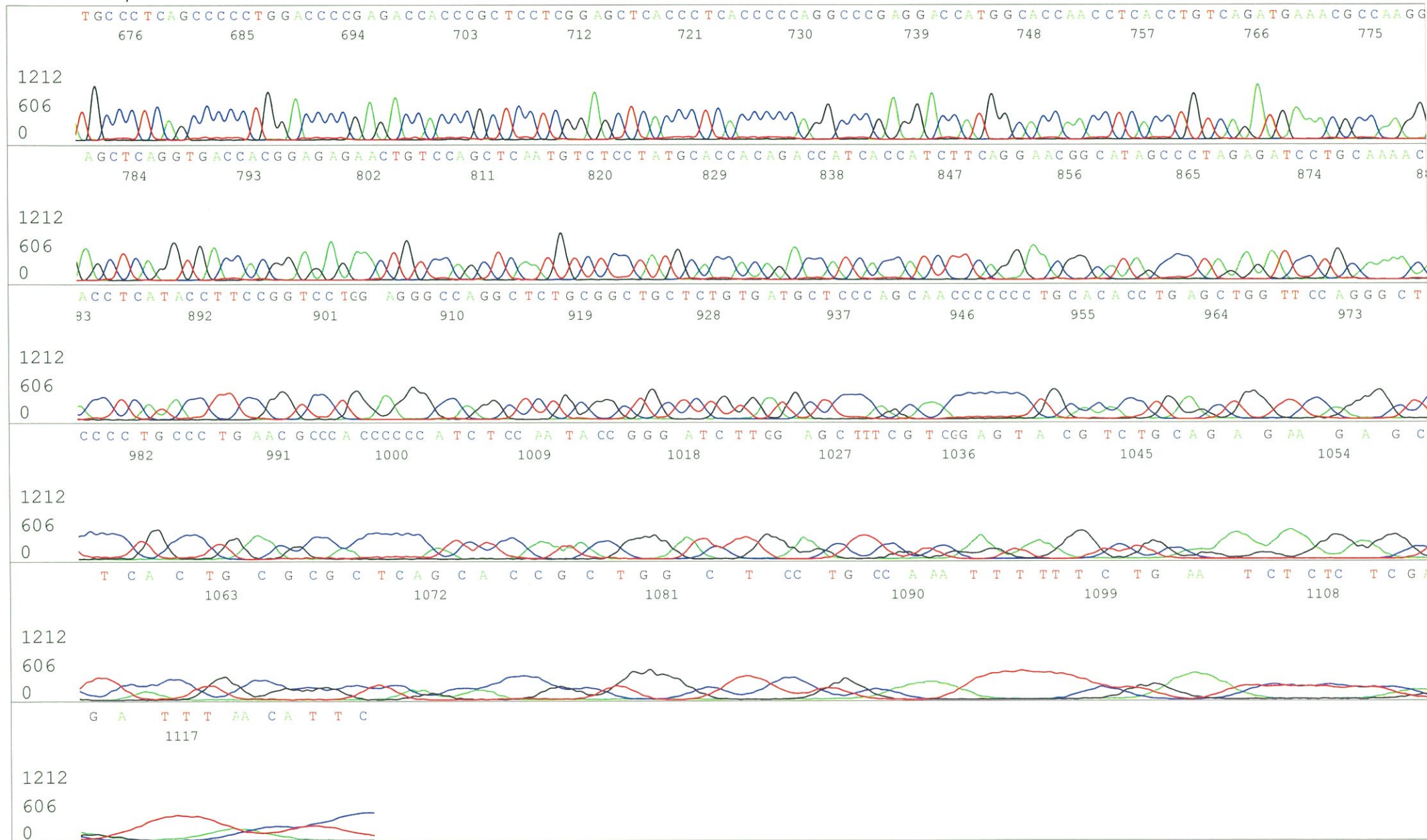
Spacing:12.02 Pts/Panel1350

Version 6.0 HiSQV Bases: 974

Plate Name: 20170321_GNP



S/N G:177 A:195 T:160 C:223
KB.bcp
KB 1.4.1.8 Cap:12



S/N G:276 A:291 T:377 C:324 Primer B : M13

IRAK051P21_A7Cf_M13(-40)

Mar 21,2017 10:19AM, JST

KB.bcp

KB_3500_POP7_BDTv3.mob

Mar 21,2017 10:45AM, JST

KB 1.4.1.8 Cap:15

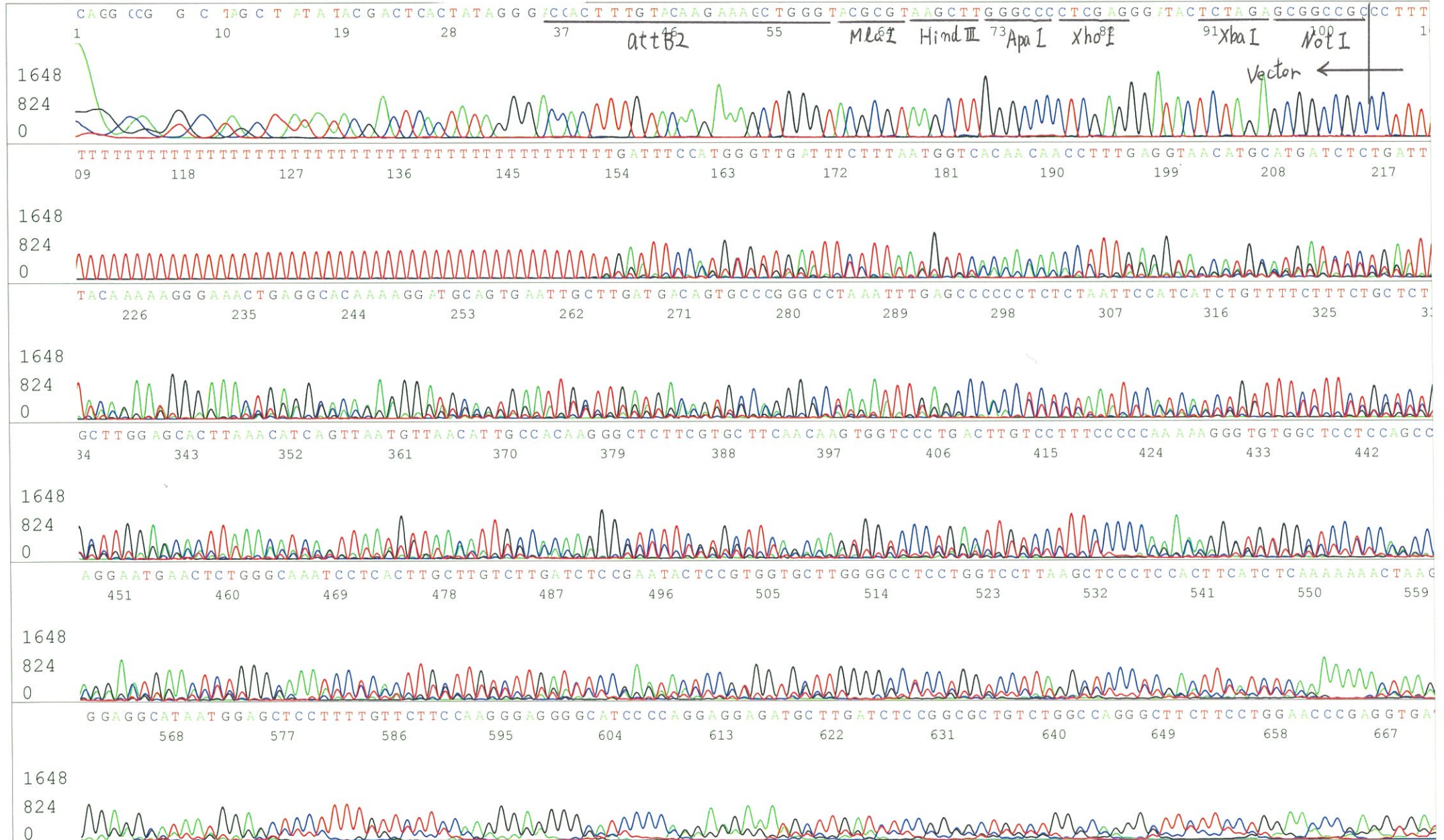
5' GTTTTCCCAGTCACGACGTTGTA 3'

Pts 1528 to 13399 Pk1 Loc:1505

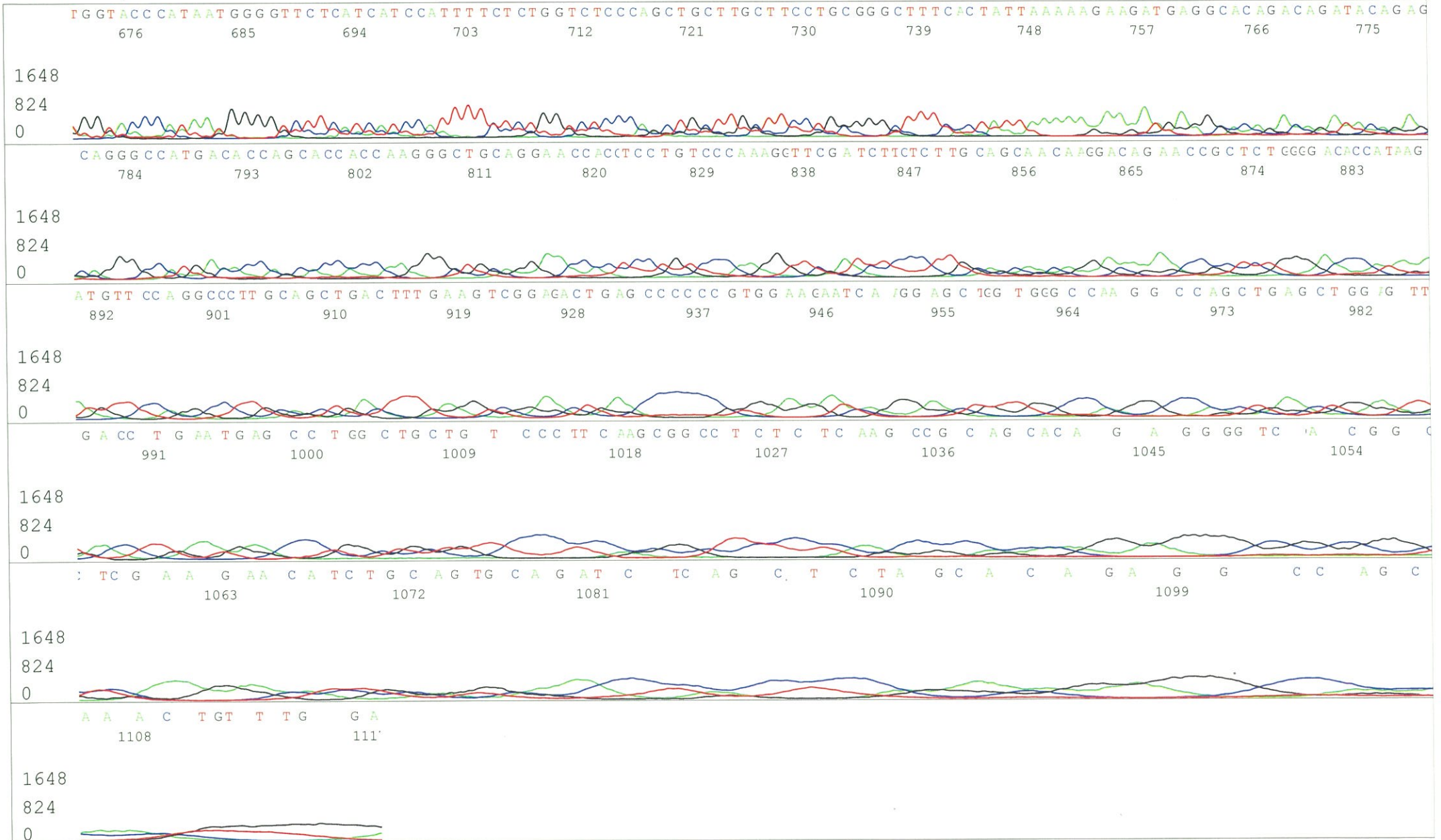
Spacing:12.14 Pts/Panel1350

Version 6.0 HiSQV Bases: 634

Plate Name: 20170321_GNP

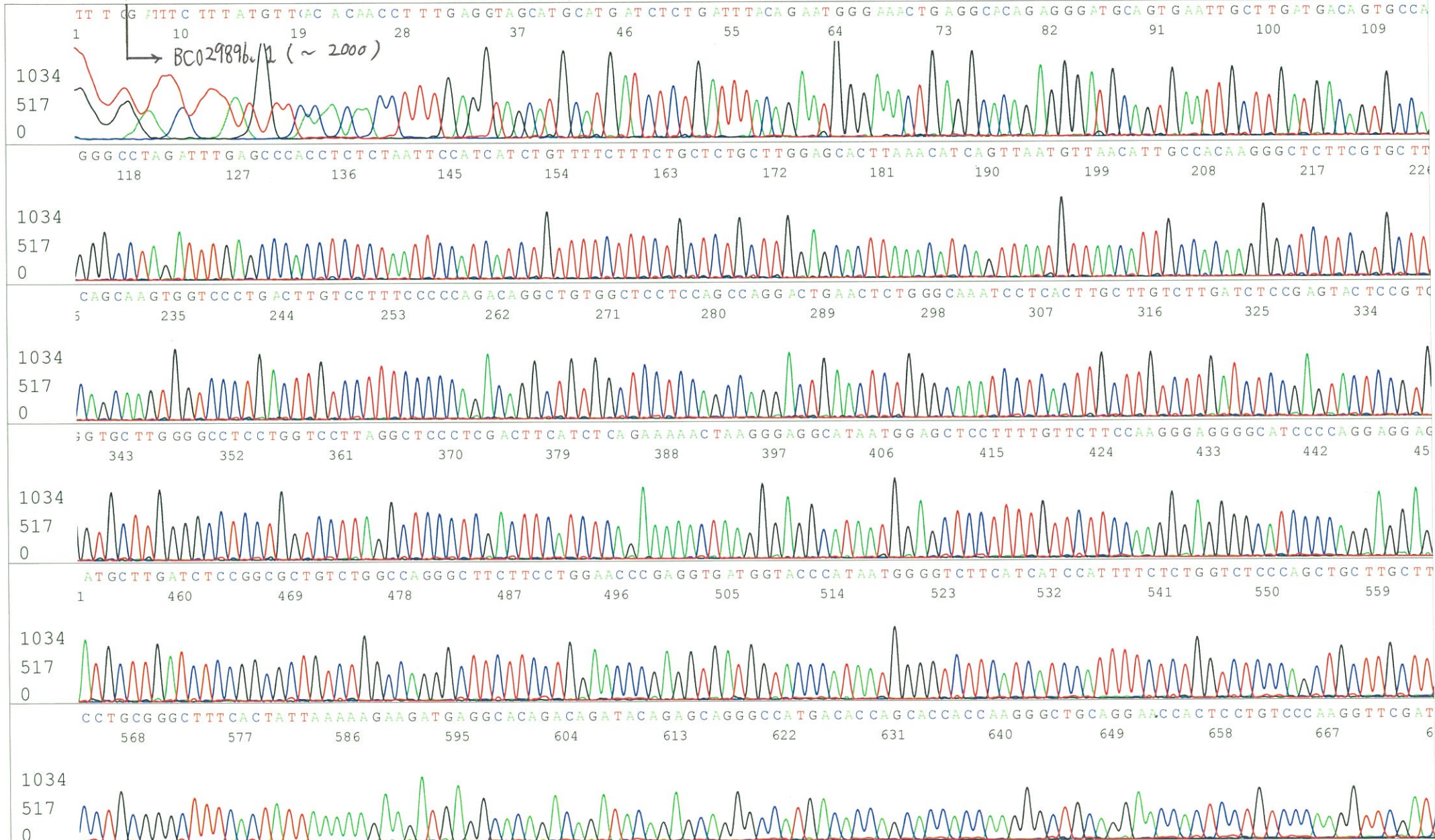


S/N G:276 A:291 T:377 C:324
KB.bcp
KB 1.4.1.8 Cap:15



S/N G:112 A:99 T:117 C:138
KB.bcp
KB 1.4.1.8 Cap:1

Primer C : Poly(A) region primer #17
5' TTTTTTTTTTTTTTTTTTTTTT **GAT** 3'



S/N G:112 A:99 T:117 C:138
KB.bcp
KB 1.4.1.8 Cap:1

