

**RIKEN Clone ID : IRAK050G06**

Lot#: 7893\_A9Ht

Vector : pCMV-SPORT6

Gene	CCR5	
Accession No.	BC038398.1	3400 bp
	CDS	1059 bp

● Plasmid DNA purification

Date : 190902

Culture : LB (100 ug/ml Ampicillin) 5 ml -> at 37 deg C over night

Date : 190903

Purification : QIAGEN Miniprep kit -> dH<sub>2</sub>O 100 ul

● Digestion by restriction enzyme/Concentration calibration

Date : 190903

DNA concentration (O.D.): 44 ng/ul

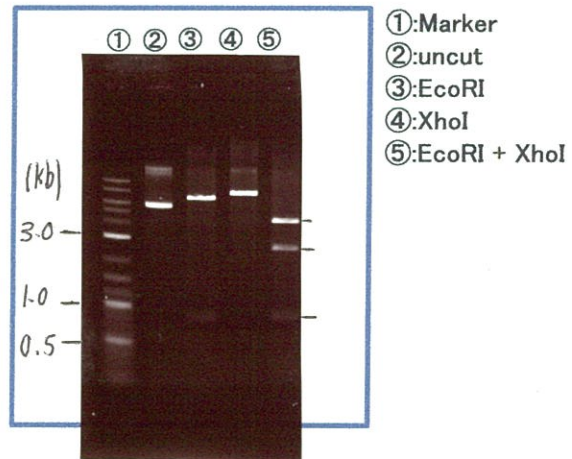
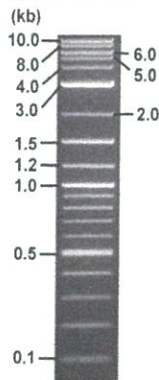
< Size of fragment expected from this clone >

DNA	<u>2.3</u> ul
Enzyme (EcoRI + XhoI)	0.5 + 0.5 ul
Buffer H	1 ul
dH <sub>2</sub> O	<u>5.7</u> ul
Total	10 ul

EcoRI	6.9 , 0.8 kb
XhoI	7.7 kb
EcoRI + XhoI	4.3kb (Vector)      2.6, 0.8 kb

Electrophoresis : 1% agarose gel, 1x TAE Buffer

Marker : 2-Log DNA Ladder (NEB#N3200L)



● Adjust plasmid DNA solution to 25 ng/ul

Date : 190910

DNA ( <u>44</u> ng/ul)	<u>62.0</u> ul
10x TE	<u>10.9</u> ul
dH <sub>2</sub> O	<u>36.2</u> ul
Total	<u>109.1</u> ul

● Confirmation of the insertion sequence

Date : 190905

Primer A	Reverse2
Primer B	M13
Primer C	poly(A) region primer #38
List of Sequencing Primers	<a href="http://dna.brc.riken.jp/en/GNPclone3en.html">http://dna.brc.riken.jp/en/GNPclone3en.html</a>

● Shipping

Conc. : 25 ng/ul, Volume : 40 ul  
 Conc. :      ng/ul, Volume :      ul

APPROVED BY :

<http://dna.brc.riken.jp/index.html>



S/N G:83 A:81 T:69 C:98

7893\_IRAK050G06\_A9Ht\_Reverse2

Sep 04,2019 10:42AM, JST

KB.bcp

Primer A : Reverse2

KB\_3500\_POP7\_BDTv3.mob

Gray line indicates quality value

Sep 04,2019 10:58AM, JST

KB 1.4.1.8 Cap:1

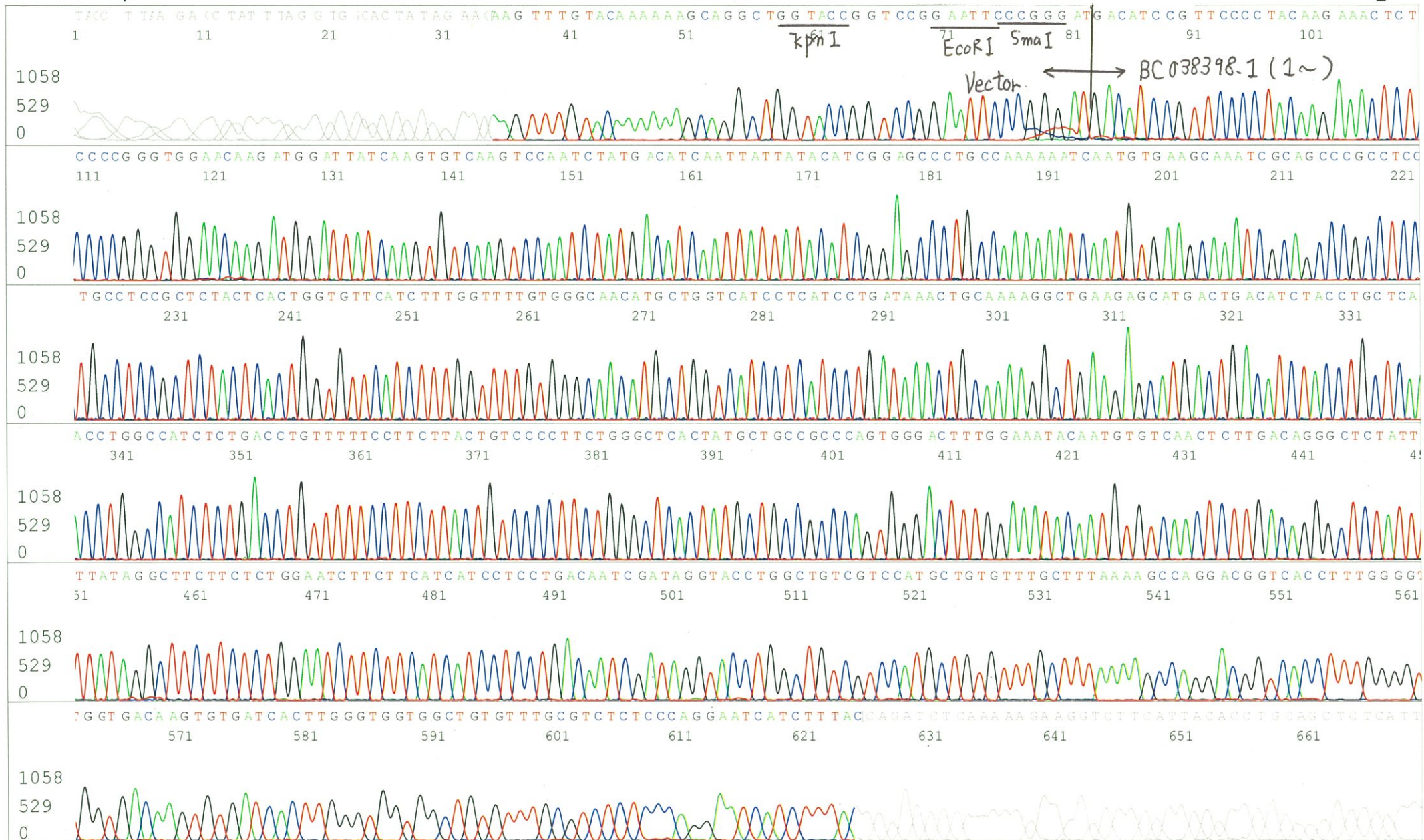
5' GCGGATAACAATTTTCACACAGG 3'

Pts 1695 to 8559 Pk1 Loc:1663

Version 6.0 HiSQV Bases: 726

(QV) < 40.

Plate Name: 20190904\_MGE



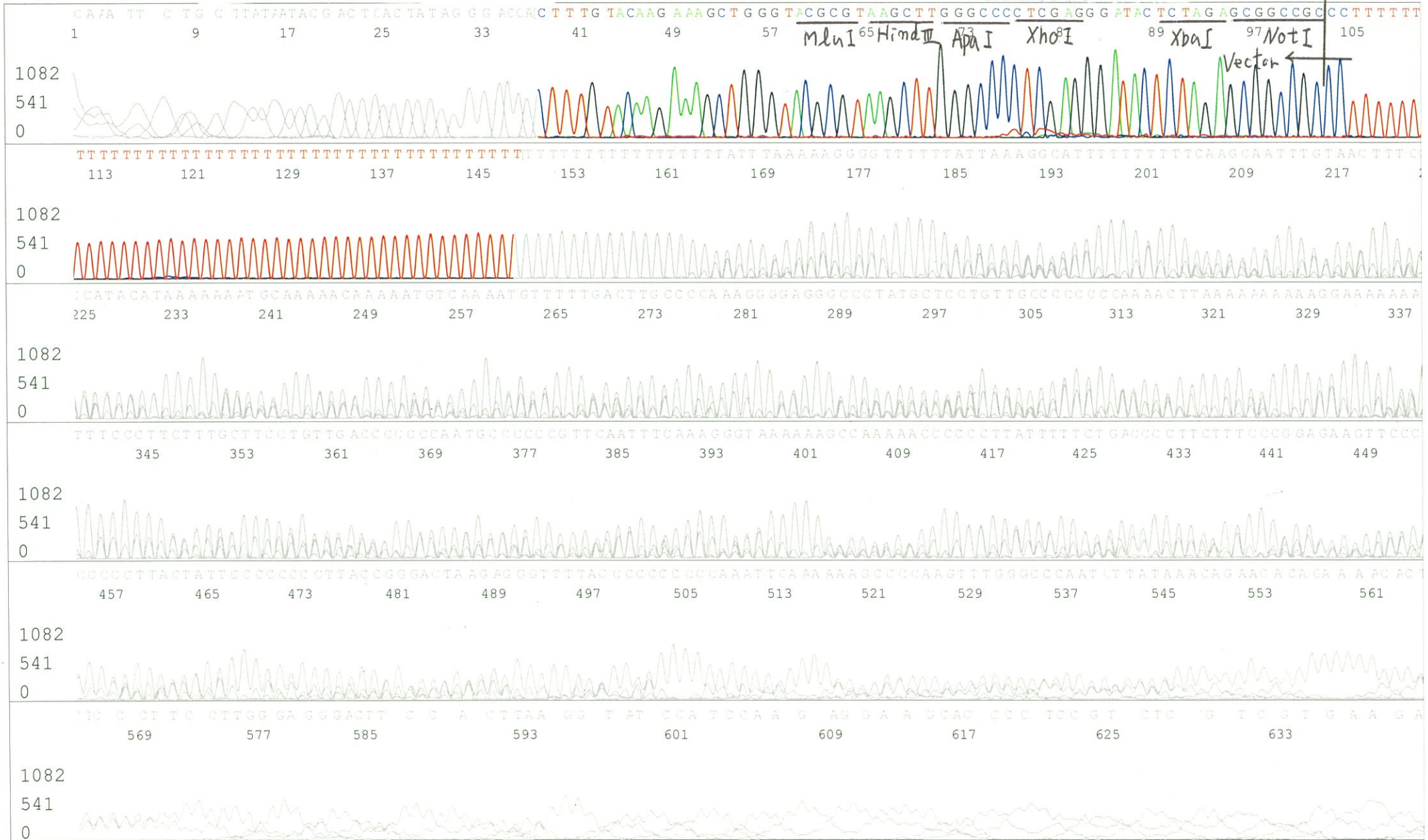
S/N G:38 A:45 T:39 C:44  
KB.bcp  
KB 1.4.1.8 Cap:2

Primer B : M13  
5' GTTTTCCCAGTCACGACGTTGTA 3'

7893\_IRAK050G06\_A9Ht\_M13(-40)  
KB\_3500\_POP7\_BDTv3.mob  
Pts 1680 to 8509 Pk1 Loc:1648  
Version 6.0 HiSQV Bases: 165

Gray line indicates quality value  
(QV) < 40.

Sep 04,2019 10:42AM, JST  
Sep 04,2019 10:58AM, JST  
Spacing:10.18 Pts/Panel1350  
Plate Name: 20190904\_MGE



S/N G:19 A:23 T:15 C:18

Primer C : Poly(A) region primer #38

7893\_IRAK050G06\_A9Ht\_GNP 38

KB\_3500\_POP7\_BDTv3.mob

Gray line indicates quality value

Sep 05,2019 09:35AM, JST

KB.bcp

Pts 1733 to 8706 Pk1 Loc:1701

Sep 05,2019 09:50AM, JST

KB 1.4.1.8 Cap:5

5' TTTTTTTTTTTTTTTTTTTTTTTT AII 3'

Version 6.0 HiSQV Bases: 662 (QV) < 40.

Spacing:10.56 Pts/Panel1350

Plate Name: 20190905\_Mix

