

RIKEN Clone ID : IRAK049E21

Vector : pCMV-SPORT6

Gene	NIPA1	
Accession No.	BC025678.1	1444 bp
	<i>CDS</i>	836 bp

● Plasmid DNA purification

Date : 22.04.19

Culture : LB (100 ug/ml Ampicillin) 5 ml -> at 37 deg C over night

Date : 22.04.20

Purification : QIAGEN Miniprep kit -> dH₂O 100 ul

● Digestion by restriction enzyme/Concentration calibration

Date : 22.04.20

DNA concentration (O.D.): 237 ng/ul

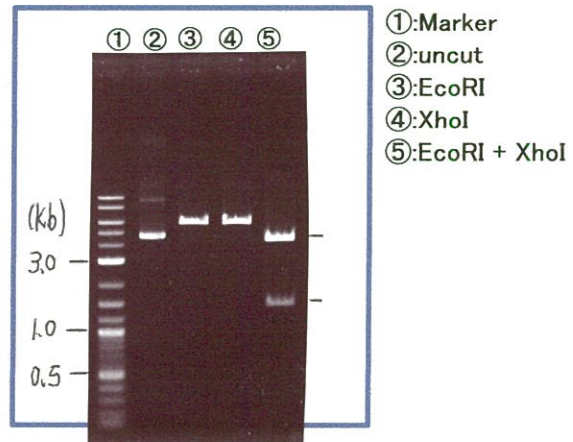
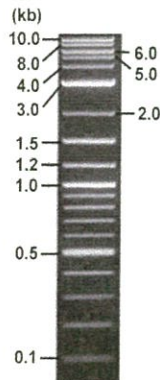
< Size of fragment expected from this clone >

DNA	0.4 ul
Enzyme (EcoRI + XhoI)	0.5 + 0.5 ul
Buffer H	1 ul
dH ₂ O	7.6 ul
Total	10 ul

EcoRI	5.8 kb
XhoI	5.8 kb
EcoRI + XhoI	4.3kb (Vector) 1.5 kb

Electrophoresis : 1% agarose gel, 1x TAE Buffer

Marker : 2-Log DNA Ladder (NEB#N3200L)



● Adjust plasmid DNA solution to 25 ng/ul

Date : 22,04,22

DNA (<u>237</u> ng/ul)	90.0 ul
10x TE	85.3 ul
dH ₂ O	677.9 ul
Total	853.2 ul

● Confirmation of the insertion sequence

Date : 22,04,22

Primer A	Reverse2
Primer B	M13
Primer C	poly(A) region primer #35
List of Sequencing Primers	http://dna.brc.riken.jp/en/GNPclone3en.html

● Shipping

Conc. : 25 ng/ul, Volume : 40 ul

Conc. : ng/ul, Volume : ul

APPROVED BY :

<http://dna.brc.riken.jp/index.html>



S/N G:12 A:14 T:14 C:22

Primer A : Reverse2

7893_IRAK049E21_B2Df_3_Reverse2

KB_3500_POP7_BDTv3.mob

Gray line indicates quality value

Apr 21,2022 09:49AM, JST

KB.bcp

5' GCGGATAACAATTTTCACACAGG 3'

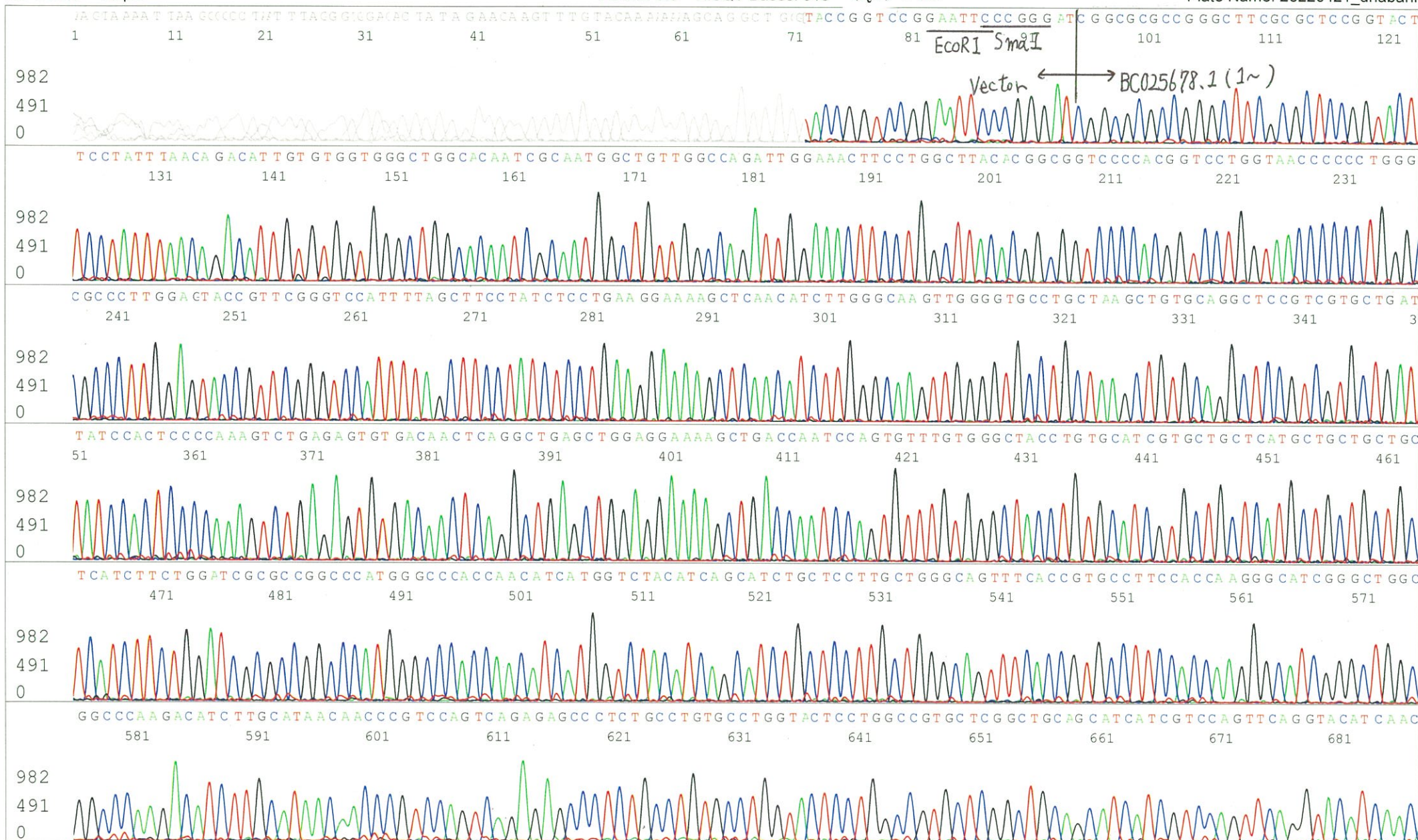
Pts 1344 to 13951 Pk1 Loc:1321

Version 6.0 HiSQV Bases: 916 (QV) < 40.

Apr 21,2022 10:18AM, JST

Spacing:12.47 Pts/Panel1350

Plate Name: 20220421_dnabank



S/N G:6 A:7 T:6 C:6

Primer B : M13

7893_IRAK049E21_B2Df_3_M13(-40)

Apr 21, 2022 09:49AM, JST

KB.bcp

KB_3500_POP7_BDTv3.mob

Apr 21, 2022 10:18AM, JST

KB 1.4.1.8 Cap:4

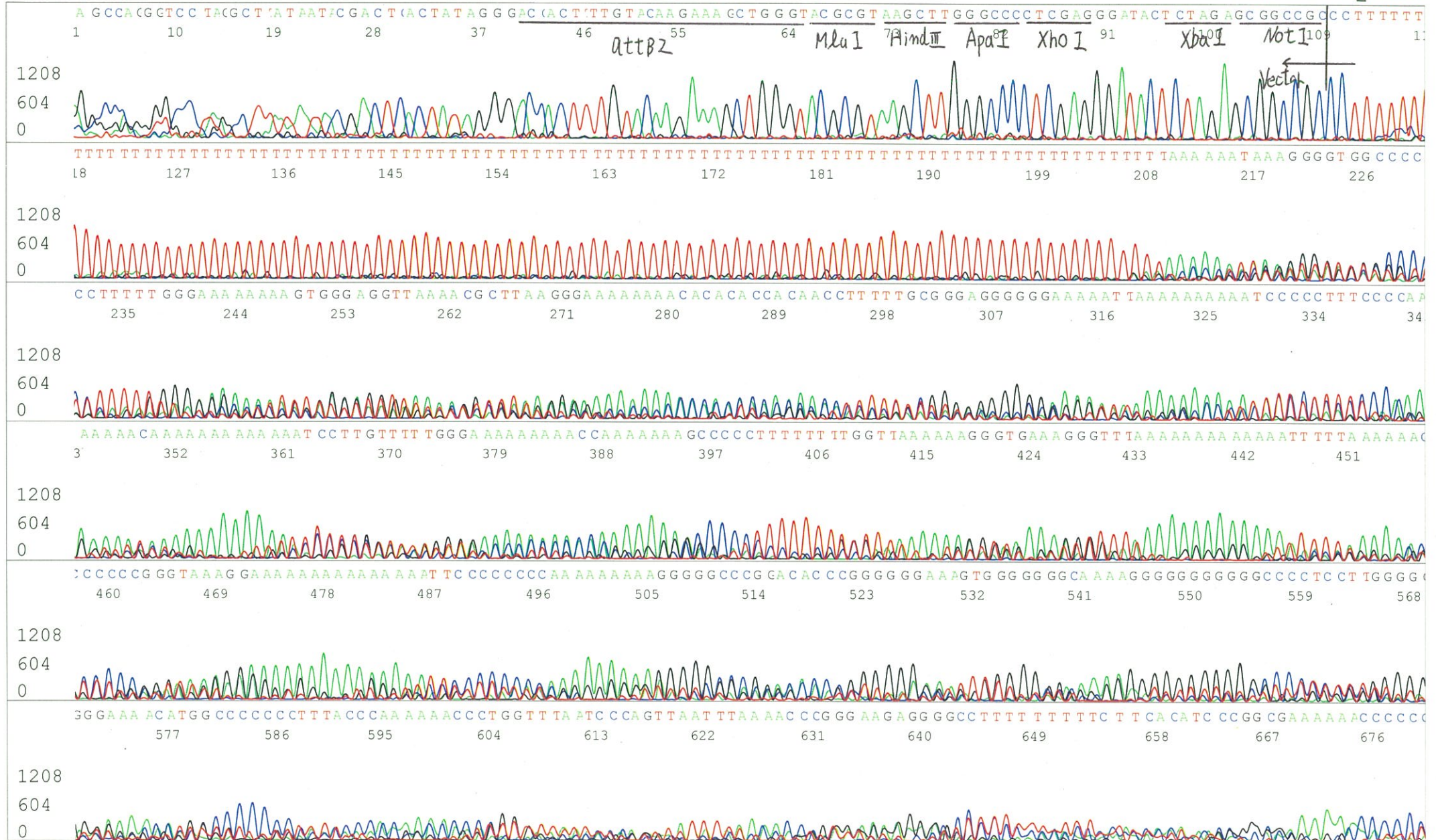
5' GTTTTCCCAGTCACGACGTTGTA 3'

Pts 1355 to 13936 Pk1 Loc:1332

Spacing:12.6 Pts/Panel1350

Version 6.0 HiSQV Bases: 110

Plate Name: 20220421_dnabank



S/N G:879 A:1345 T:475 C:586

Primer C : Poly(A) region primer # 35

7893_IRAK049E21_B2Df_3_GNP 35

KB_3500_POP7_BDTv3.mob

Gray line indicates quality value

Apr 22,2022 09:40AM, JST

KB.bcp

Pts 1351 to 13419 Pk1 Loc:1328

Apr 22,2022 10:07AM, JST

KB 1.4.1.8 Cap:21

5' TTTTTTTTTTTTTTTTTTTTTT AAC 3'

Version 6.0 HiSQV Bases: 968

(QV) < 40.

Spacing:11.93 Pts/Panel1350

Plate Name: 20220422_kitaku

