

RIKEN Clone ID : IRAK049C06

Lot#: 7893_A5K5

Vector : pCMV-SPORT6

Gene	CABP1	
Accession No.	BC030201.1	1685 bp
	CDS	1113 bp

● Plasmid DNA purification

Date : 151105

Culture : LB (100 ug/ml Ampicillin) 5 ml → at 37 deg C over night

Date : 151106

Purification : QIAGEN Miniprep kit → dH₂O 100 ul

● Digestion by restriction enzyme/Concentration calibration

Date : 151106

DNA concentration (O.D.): 132 ng/ul

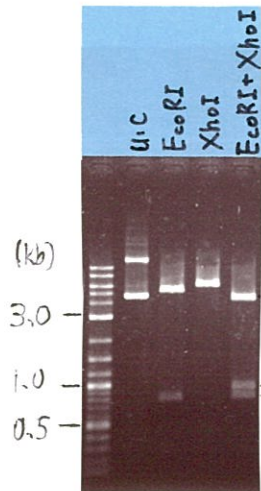
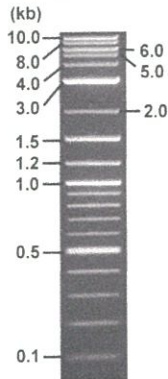
< Size of fragment expected from this clone >

DNA	0.7	ul
Enzyme (EcoRI + XhoI)	0.5 + 0.5	ul
Buffer H	1	ul
dH ₂ O	7.3	ul
Total	10	ul

EcoRI	5.2, 0.80 kb
XhoI	6.0 kb
EcoRI + XhoI	4.3kb (Vector) 0.93, 0.80 kb

Electrophoresis : 1% agarose gel, 1x TAE Buffer

Marker : 2-Log DNA Ladder (NEB#N3200L)



● Adjust plasmid DNA solution to 25 ng/ul

Date : 151125

DNA (<u>132</u> ng/ul)	<u>80.0</u> ul
10x TE	<u>42.2</u> ul
dH ₂ O	<u>300.2</u> ul
Total	<u>422.4</u> ul

● Confirmation of the insertion sequence

Date : 151120

Primer A	Reverse2
Primer B	M13
Primer C	Poly(A) region primer #26
List of Sequencing Primers	http://dna.brc.riken.jp/en/GNPclone3en.html

● Shipping

Conc. : 25 ng/μl, Volume : 40 μl

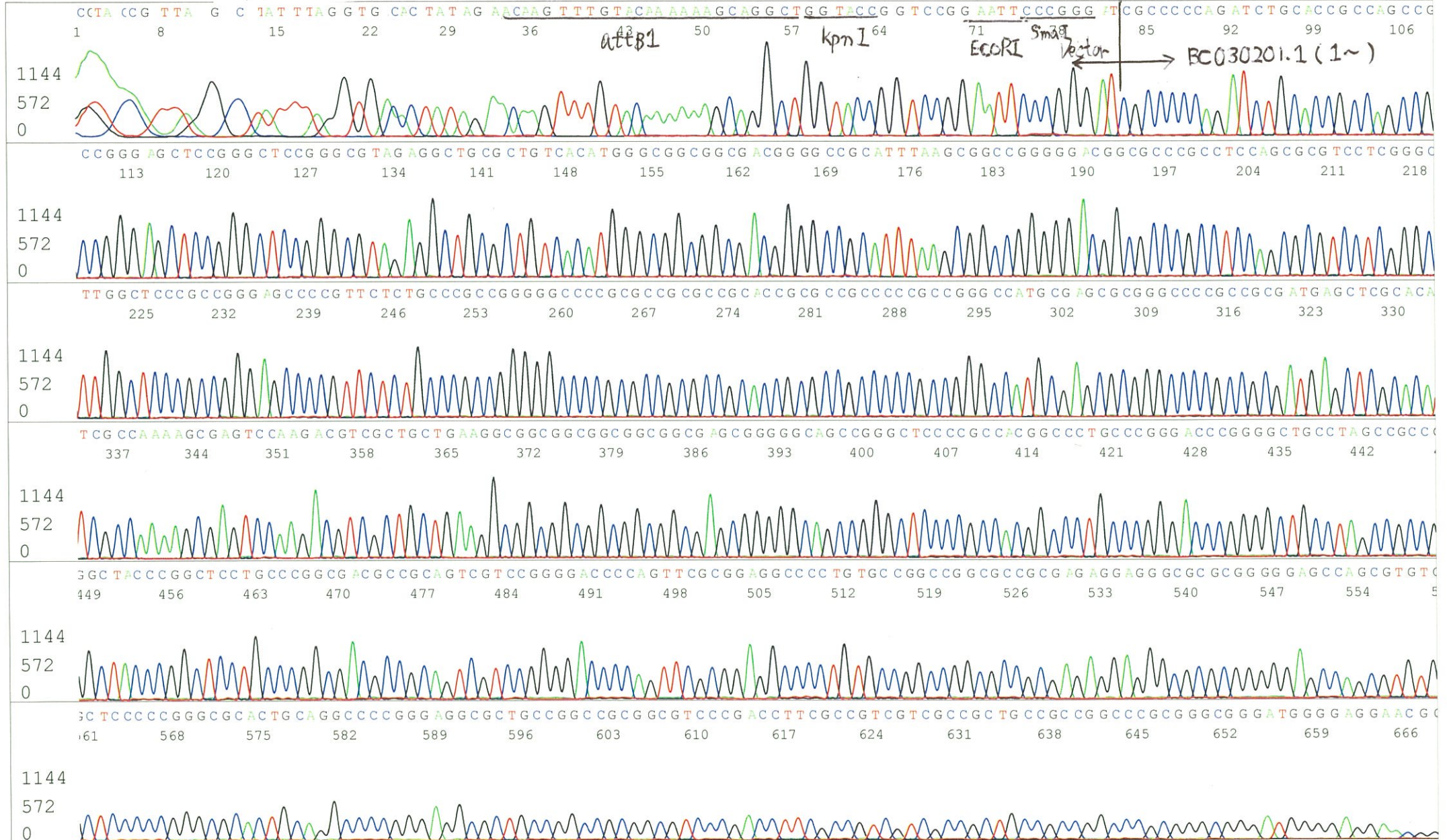
Conc. : ng/μl, Volume : μl

APPROVED BY :

<http://dna.brc.riken.jp/index.html>



S/N G:249 A:112 T:101 C:21 Primer A : Reverse2
KB.bcp
KB 1.4.1.8 Cap:11 5' GCGGATAACAATTTTCACACAGG 3'



S/N G:249 A:112 T:101 C:217
KB.bcp
KB 1.4.1.8 Cap:11



S/N G:64 A:31 T:40 C:31

Primer B : M13

IRAK049C06_A5K5_M13(-40)

Nov 18,2015 05:59PM, JST

KB.bcp

KB_3500_POP7_BDTv3.mob

Nov 18,2015 06:26PM, JST

KB 1.4.1.8 Cap:6

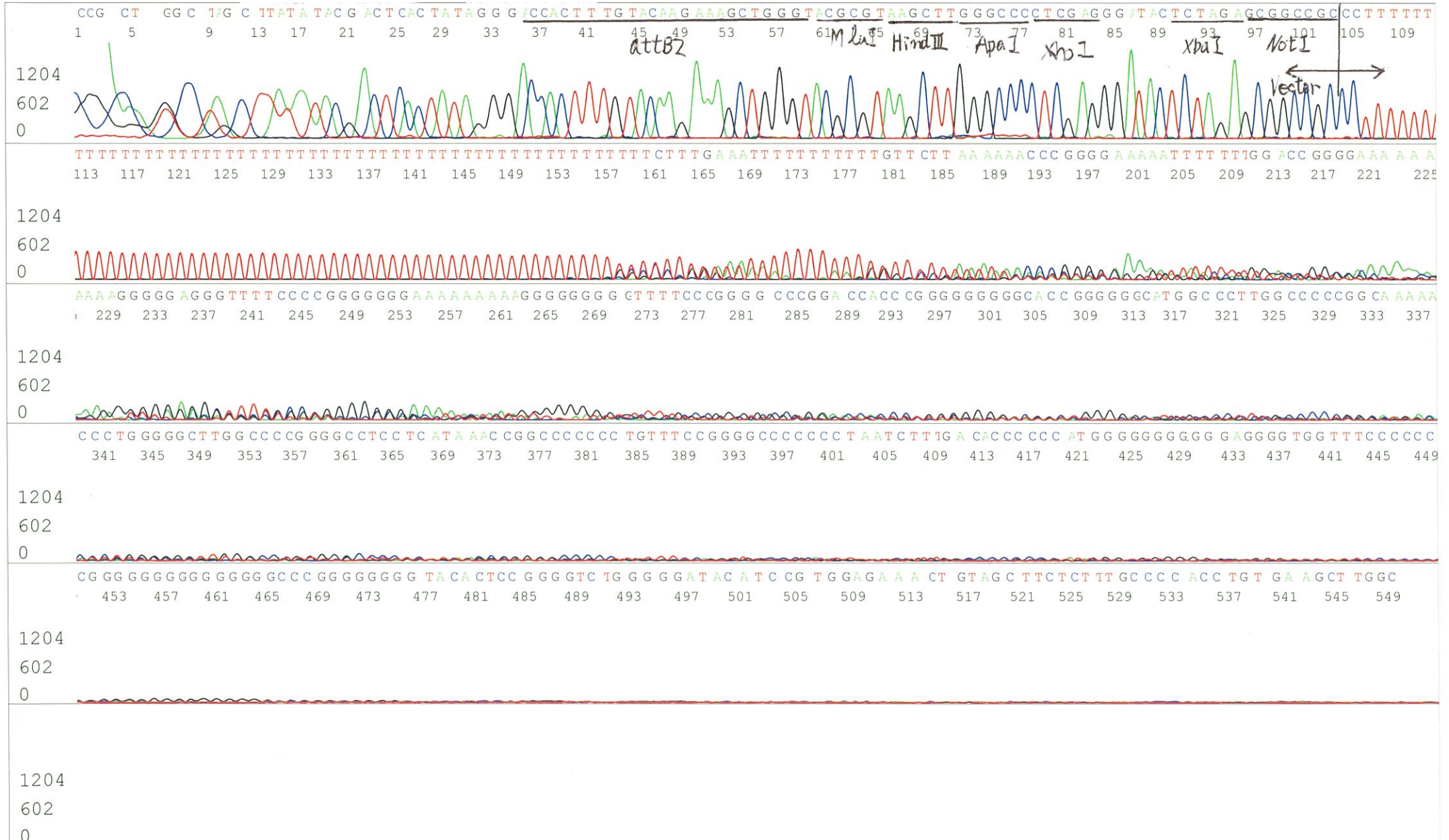
5' GTTTTCCCAGTCACGACGTTGTA 3'

Pts 1539 to 11601 Pk1 Loc:1516

Spacing:13.25 Pts/Panel1350

Version 6.0 HiSQV Bases: 188

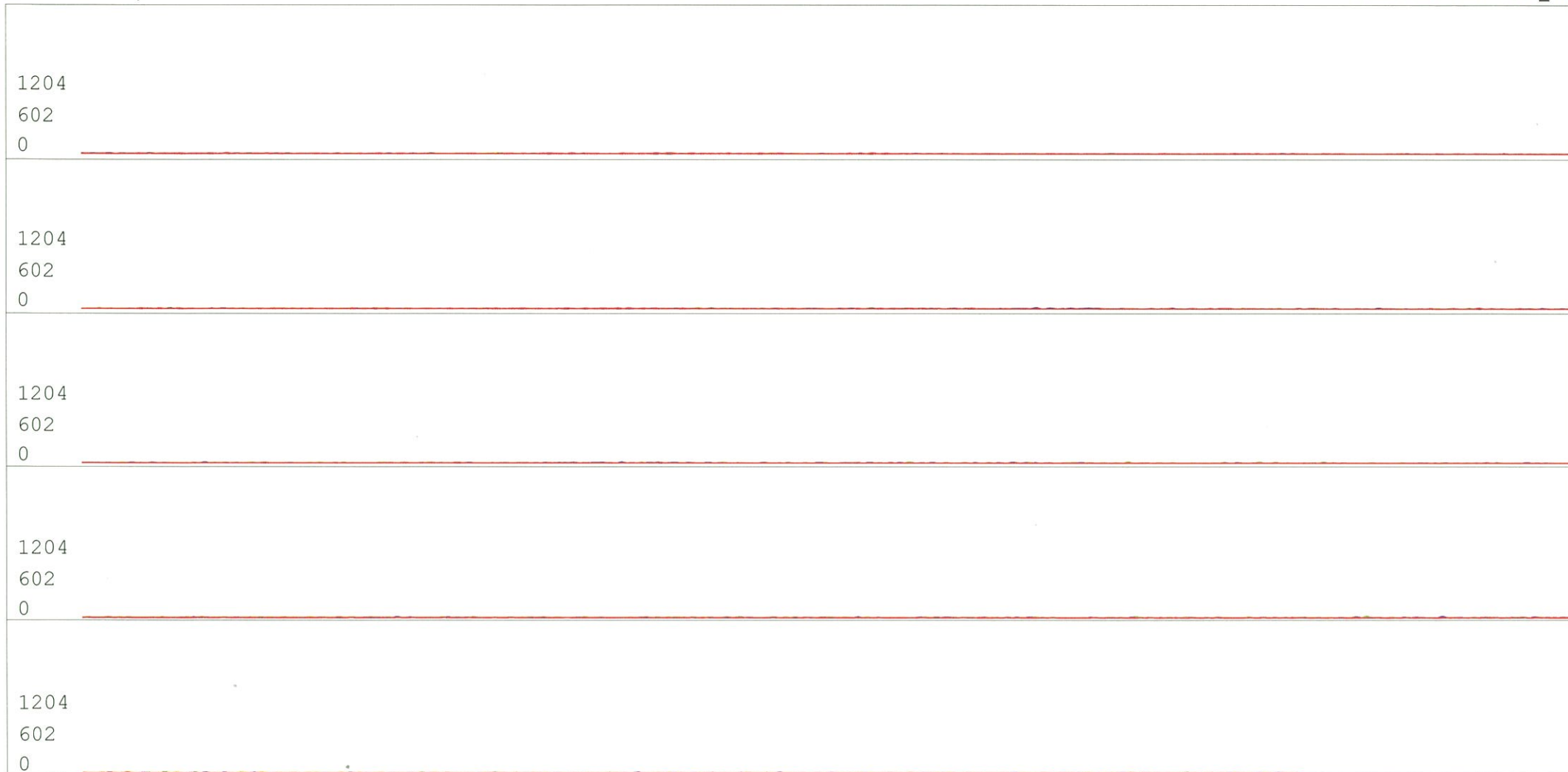
Plate Name: 20151118_mix



S/N G:64 A:31 T:40 C:31
KB.bcp
KB 1.4.1.8 Cap:6

IRAK049C06_A5K5_M13(-40)_B06_06
IRAK049C06_A5K5_M13(-40)
KB_3500_POP7_BDTv3.mob
Pts 1539 to 11601 Pk1 Loc:1516
Version 6.0 HiSQV Bases: 188

Inst Model/Name 3500/3500 Instrument
Nov 18,2015 05:59PM, JST
Nov 18,2015 06:26PM, JST
Spacing:13.25 Pts/Panel1350
Plate Name: 20151118_mix



S/N G:111 A:37 T:53 C:56

KB.bcp

KB 1.4.1.8 Cap:11

Primer C : Poly(A) region primer # 16

IRAK049C06_A5K5_GNP26

KB_3500_POP7_BDTv3.mob

Pts 1759 to 12065 Pk1 Loc:1759

Version 6.0 HiSQV Bases: 728

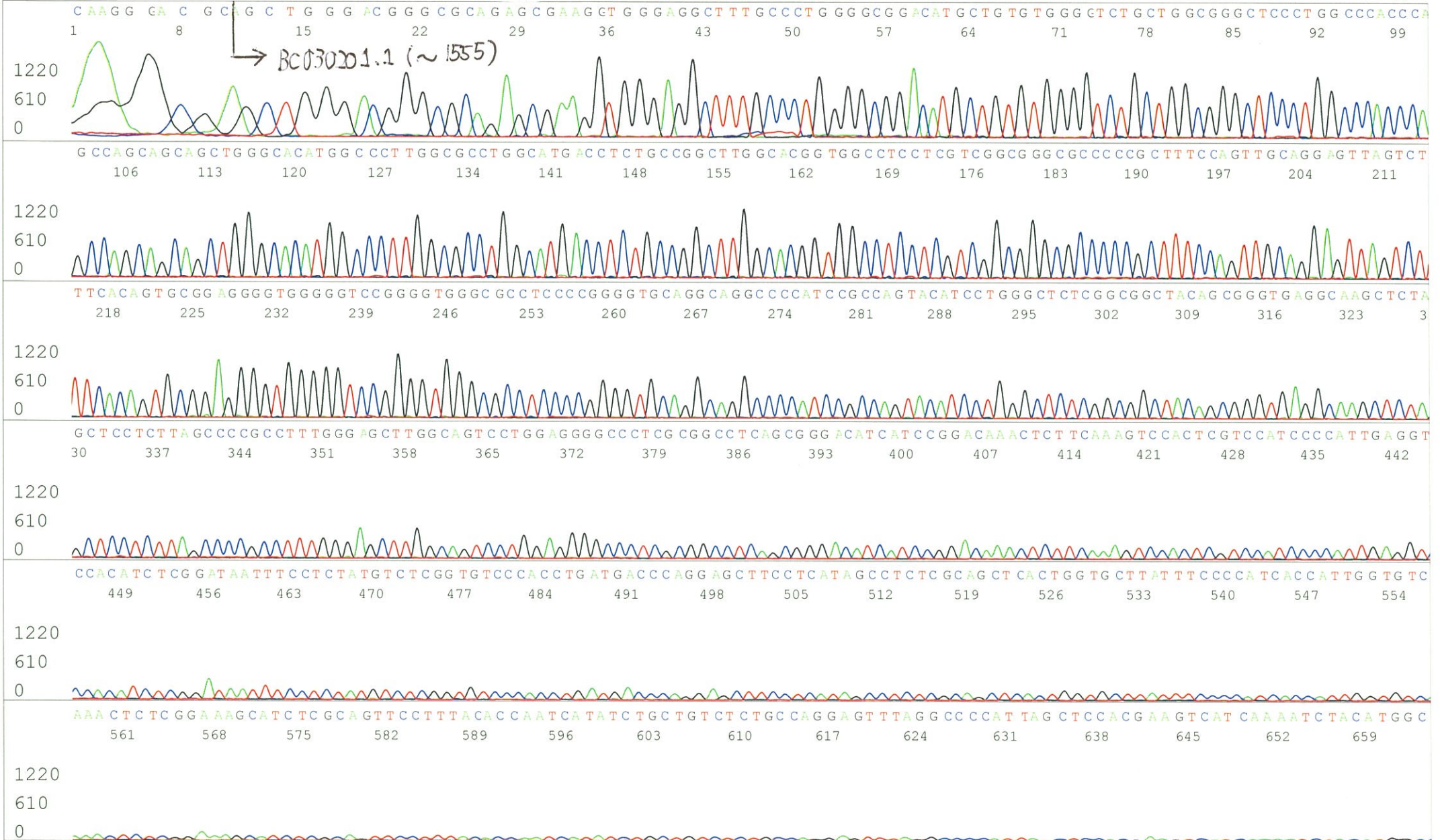
Nov 20,2015 01:58PM, JST

Nov 20,2015 02:24PM, JST

Spacing:10.69 Pts/Panel1350

Plate Name: 20151120_mix

5' TTTTTTTTTTTTTTTTTTTTTT G C T 3'



S/N G:111 A:37 T:53 C:56
KB.bcp
KB 1.4.1.8 Cap:11

