

RIKEN Clone ID : IRAK048L20

Lot#: 7566_B0Kb

Vector : pBluescriptR

Gene	FLJ25416	
Accession No.	BC039268.1	3545 bp
	<i>CDS</i>	2997 bp

● Plasmid DNA purification

Date : 20.11.12

Culture : LB (100 ug/ml Ampicillin) 5 ml -> at 37 deg C over night

Date : 20.11.13

Purification : QIAGEN Miniprep kit -> dH₂O 100 ul

● Digestion by restriction enzyme/Concentration calibration

Date : 20.11.13

DNA concentration (O.D.): 258 ng/ul

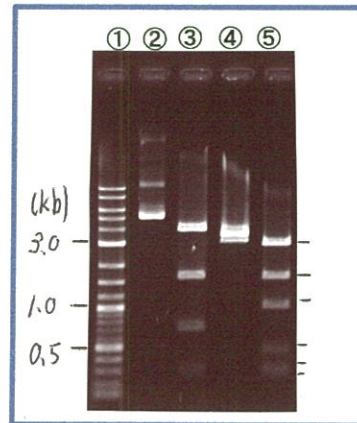
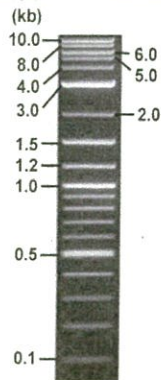
< Size of fragment expected from this clone >

DNA	0.4	ul
Enzyme (EcoRI + BamHI)	0.5 + 0.5	ul
Buffer H	1	ul
dH ₂ O	7.6	ul
Total	10	ul

EcoRI	3.8, 1.6, 0.6, 0.3 kb
BamHI	3.3, 3.0 kb
EcoRI + BamHI	2.8kb (Vector) 1.6, 1.0, 0.4, 0.3, 0.2 kb

Erectrophoresis : 1% agarose gel, 1x TAE Buffer

Marker : 2-Log DNA Ladder (NEB#N3200L)



- ①:Marker
- ②:uncut
- ③:EcoRI
- ④:BamHI
- ⑤:EcoRI + BamHI

● Adjust plasmid DNA solution to 25 ng/ul

Date : 20.11.20

DNA (<u>258</u> ng/ul)	<u>85.0</u>	ul
10x TE	<u>87.7</u>	ul
dH ₂ O	<u>704.5</u>	ul
Total	<u>877.2</u>	ul

● Confirmation of the insertion sequence

Date : 20.11.20

Primer A	T7
Primer B	Reverse2
Primer C	-
List of Sequencing Primers	http://dna.brc.riken.jp/en/GNPclone3en.html

● Shipping

Conc. : 25 ng/ul, Volume : 40 ul

Conc. : ng/ul, Volume : ul

APPROVED BY :

<http://dna.brc.riken.jp/index.html>



S/N G:198 A:238 T:236 C:263

Primer A : T7

7566_IRAK048L20_B0Kb_T7

Nov 17,2020 10:34AM, JST

KB.bcp

KB_3500_POP7_BDTv3.mob

Gray line indicates quality value

Nov 17,2020 10:51AM, JST

KB 1.4.1.8 Cap:3

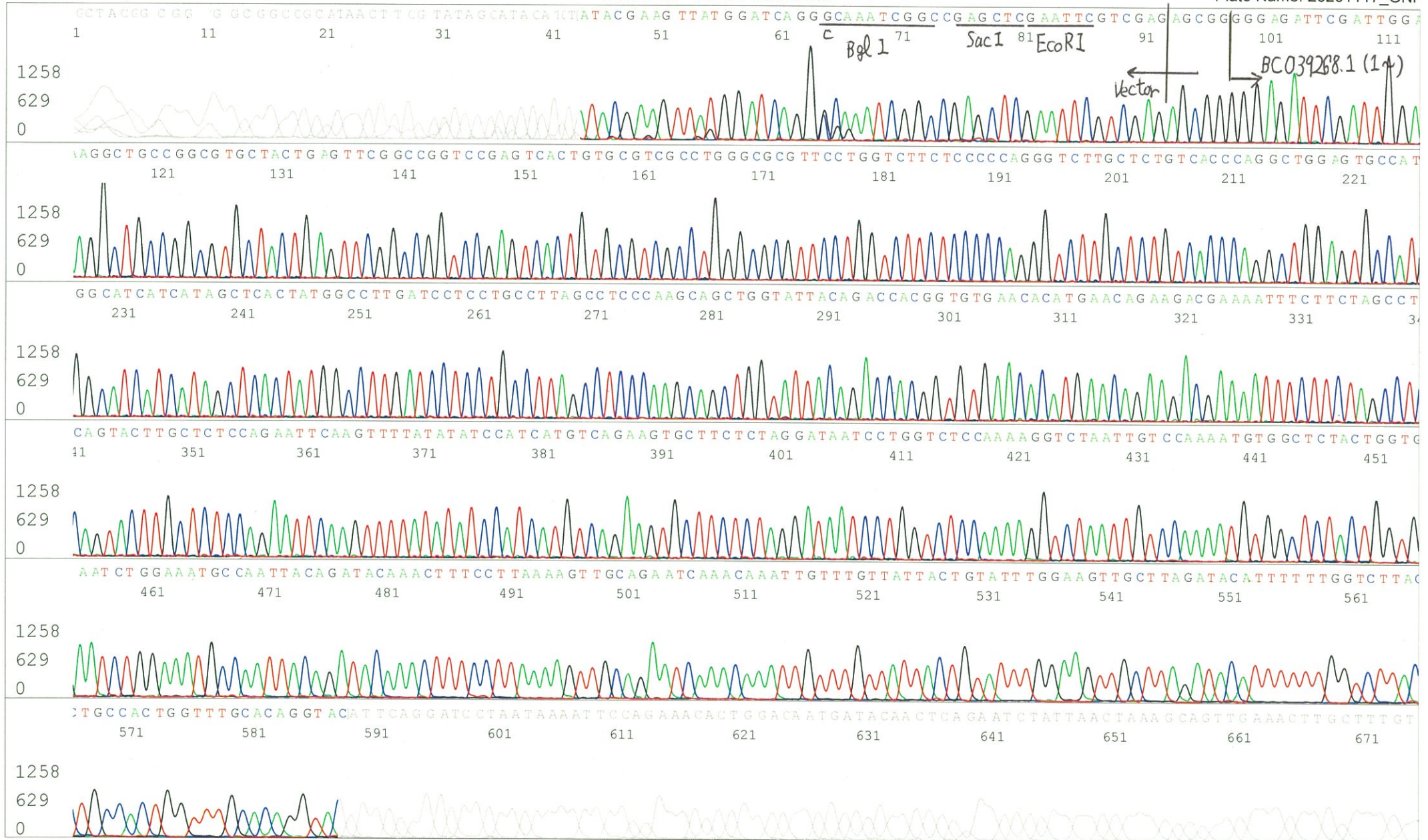
5' TAATACGACTCACTATAGGG 3'

Pts 1810 to 8707 Pk1 Loc:1778

(QV) < 40.

Spacing:10.71 Pts/Panel1350

Plate Name: 20201117_GNP



S/N G:90 A:132 T:110 C:109

Primer B : Reverse2

7566_IRAK048L20_B0Kb_Reverse2

KB_3500_POP7_BDTv3.mob

Gray line indicates quality value

Nov 17,2020 10:34AM, JST

KB.bcp

5' GCGGATAACAATTTACACAGG 3'

Pts 1772 to 8707 Pk1 Loc:1740

(QV) < 40.

Nov 17,2020 10:51AM, JST

KB 1.4.1.8 Cap:6

Version 6.0 HiSQV Bases: 677

Spacing:10.65 Pts/Panel1350

Plate Name: 20201117_GNP

